

EMPOWER

A newsletter for family & friends



Turnstone

2011-12
ANNUAL REPORT



Rodney Jordan

Rodney Jordan is counting on Turnstone, his own determination, and the validity of the adage “You can’t keep a good man down.”

Life was looking up for Rodney Jordan in the summer of 2011. Though still grieving, he’d come to terms with the death of Ramonna, his wife of 35 years. She’d succumbed to cancer in December 2009, just a few weeks after they’d fulfilled their longtime dream of taking a Caribbean cruise.

But Rodney had found love again, and he was engaged. On July 17, 2011, Rodney and his fiancée were in the process of consolidating their belongings in one home. Rodney was carrying a large, heavy box above his head as he tried to navigate a 90-degree turn in a basement stairway.

He lost his balance and ended up face first on the concrete floor, with his body still sprawled on the steps above.

“I was conscious, but I couldn’t move,” Rodney recalls. “I was experiencing wild sensations wherever anyone touched me.”

Rodney was transported by helicopter to Parkview Hospital. During his 10-day stay in the intensive care unit, Rodney learned that he’d survived a severe spinal cord bruise between the C4 and C5 vertebrae in his neck. He’d lost the use of his extremities and would need to use a wheelchair for mobility.

CONTINUED ON PAGE 3



GOOD SPORTS

Last year, thanks to the Foellinger Foundation, we were able to fund a study to assess where sports and recreation, our fastest-growing program, stands regionally and nationally. In the last seven years, the program has grown from 35 participants to nearly 200. We currently have nine nationally ranked wheelchair teams, and we offer a host of other opportunities in adaptive sports.

What we learned: Turnstone is the largest non-hospital-related disability sports and recreation provider in Indiana, and the fourth largest in the nation. We're also considered the preeminent agency in our region: Indiana, Ohio, Michigan, and Illinois.

We're also among the largest Paralympic Sports Clubs in the country, and we have the opportunity to be a catalyst in the Paralympic sports movement as a whole. Originally created as rehabilitation for soldiers returning from World War II, the Paralympics are now held in conjunction with the Olympics. There were more than 2,000 members of Team USA alone at the 2012 Paralympics in London.

Sports and recreation can transform the lives of people with disabilities by promoting socialization, inclusion, skill building, self-confidence, teamwork, and overall health and fitness.

And when we promote these activities locally, they have a real economic impact on our local economy.

Last year, we hosted more than 20 tournaments, bringing in more than 2,000 people, who stayed at our hotels, ate at our restaurants, and took in other attractions, such as TinCaps games and the Fort Wayne Children's Zoo. People enjoy coming to Fort Wayne. We have a lot to offer.



Nancy Louraine

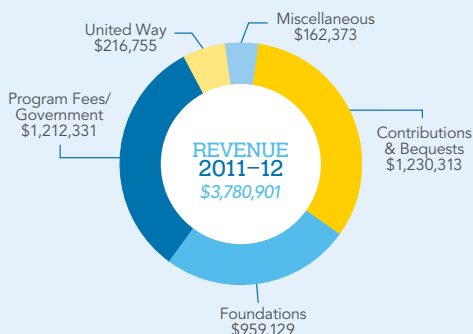
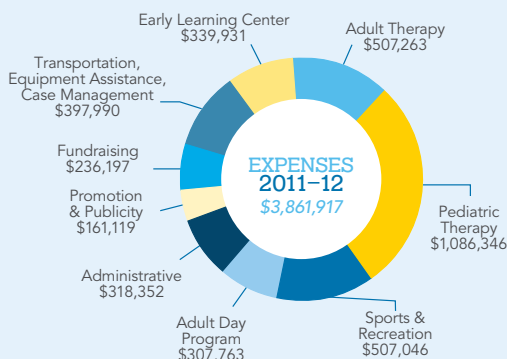
Fort Wayne is an ideal place for these events. The terrain is flat (a real boon for persons who use wheelchairs), we're along an interstate, and we have several outstanding venues for events, including one of the best ice arenas around in the Lutheran Health SportsCenter.

We believe that Turnstone can play an even larger role in the future of sports and recreation and the Paralympics in our region and nationally. We also believe the opportunity exists for Fort Wayne to become the leading Paralympic site in the nation. But we need your help, your investment, in that future.

Will the community and Turnstone work together to make this future a reality?

Nancy J. Louraine

Turnstone's fiscal year is July 1 to June 30. Below is a review of the agency's expenses and revenue for its 2011–2012 fiscal year.



CONTINUED FROM COVER

"They told me it would take time to heal," Rodney says. "It bothered me for a while that modern medicine didn't have an answer for what had happened to me, but my doctor and therapists told me, 'You will learn patience.'"



Rodney has achieved a great deal of progress in making transfers.

Having patience was one thing, but being cooped up inside was a tough pill to swallow. Rodney had always been a rugged, outdoors guy. He'd worked on farms and for a gas company. During the two decades before his accident, he'd been one of those hardy souls who spread salt and sand on the roads during inclement weather as a member of the DeKalb County Highway Department.

"After the accident, I had way too much time to sit, look out the window, and think," Rodney says. "I tried not to become addicted to TV, which wasn't easy, especially during the winter."

Rodney was fortunate to have family to help him cope. His daughter Rachel moved in with him and became his primary caregiver. "Rachel has been my nursemaid," Rodney says. "She didn't have any formal nursing training, but I couldn't have had someone better to take care of me." Another daughter, Rayanne, has also pitched in to care for her father.

Not long after the accident, Rodney began receiving therapy at a hospital rehabilitation center. When his insurance

benefits lapsed, he was able to secure home health care, but that benefit soon dwindled as well.

"I needed a lot more therapy, and I wasn't sure where to turn," Rodney says. "I was told I should find therapists who were experienced in helping people who had spinal cord injuries. My neurologist and the in-home nurses recommended Turnstone. I looked to Turnstone, and I'm glad I did."

Rodney began coming to Turnstone for physical and occupational therapies twice a week in December 2011. In May, he added a weekly visit for fitness training. The physical and occupational therapies are led by Marilyn Wedler and Karen Line, respectively, while E.J. Whitney guides Rodney as he uses weight machines and other equipment in the Health and Wellness Center.

"Marilyn, Karen, E.J.—all the folks at Turnstone—have just been great," Rodney says. "They aren't easy on me, but the results are worth it."



Rodney works out in the Health and Wellness Center.

The results have been encouraging. Rodney has made progress with his upper extremity and upper trunk strength and range of motion. His overall mobility has increased, and that has led to increased independence and confidence.

CONTINUED ON PAGE 4

NEWS NOTES

HEALTHY MINDS HEALTHY BODIES

This summer, The Olympic Opportunity Fund renewed its support of Turnstone's Healthy Minds Healthy Bodies program. This fund, which is provided through a partnership between the U.S. Olympic Committee and the Department of Veterans Affairs, will help Turnstone continue to expand its Paralympic-sport and physical-activity programs for veterans with physical disabilities. This year, Turnstone will partner with community organizations to offer adaptive rowing, curling, archery, and more. For additional information about the Healthy Minds Healthy Bodies program, contact Tina Acosta at (260) 483-2100 or tina@turnstone.org.

ADULT DAY SERVICES

Are you a veteran living with a physical disability? Do you want the opportunity to socialize with your peers? Would you like access to therapeutic activities and health and wellness programs? Contact a social worker in Turnstone's adult programs and ask about our Adult Day Services program. The Veterans Administration has awarded Turnstone a contract to provide these opportunities to veterans. Contact us for more information at (260) 483-2100.

ENERGIZE US

Energizing Indiana is partnering with regional utility companies to offer free home energy assessments. Local nonprofits benefit from this program, too. When applying for an assessment, select Turnstone as your preferred nonprofit, and the agency will receive \$25. Contact Jen Neher at (260) 483-2100 or jennifer@turnstone.org for more information.

CONTINUED FROM PAGE 3



Rodney with physical therapist Marilyn Wedler.

"I'm still classified as a quadriplegic, but I have movement in my legs and movement in my arms, although not a full range of motion," Rodney says. "Someone who hasn't seen me for a while would think that I've improved a lot, but for me it seems like a natural progression. Slowly, but surely."

Rodney recently began to stand on his own between the parallel bars, where he hopes to begin taking his first steps soon. "It feels so good to stand up on my own again, even if it's just for a minute or so," Rodney says.

Rodney's success on the parallel bars has him eyeing another goal in the new year. "I'd love to be able to use a walker by spring, but I don't know if that'll be possible," he says.

Through Rodney's determination and our staff's dedication, it might be possible. After all, Turnstone is in the business of creating possibilities for people with disabilities. ❁



"LIKE" US — USE FACEBOOK

You can now become a fan of

Turnstone on Facebook. Like us at

www.facebook.com/TurnstoneCenter

Another case of 'Turnstone Fever'



Mark and Brenda Coates

Enthusiasm. They say it's contagious. It's much like "Turnstone Fever" — once it takes hold—there's no stopping it. Enthusiasm is what drew Mark and Brenda Coates to Turnstone, and since the 1980s, they've had Turnstone Fever.

Then owner and operator of Elco Tap, Mark assisted with the Ugly Bartenders Contest, which was organized by the Multiple Sclerosis Society. Participating in this contest spurred Mark's desire to give back to the community. As a member of the Elks, Mark had learned about Turnstone. Together the Coates decided that Turnstone would become their charity of choice. It was, and still is, a place they feel does the most for people with disabilities, a population that is often ignored and underserved.

By providing their financial support, the Coates are helping Turnstone create possibilities in the lives of people with disabilities. "It's people helping people," Mark says. "People with disabilities didn't ask to be that way. If we can, we want to give a hand to help people with disabilities live a normal life, but it takes resources."

Mark and Brenda have seen the possibilities Turnstone's created firsthand. After Mark's dad survived a stroke, he received therapy at Turnstone to regain his independence. A few years later, Mark's granddaughter Amber, who had spina bifida, began receiving services at

Turnstone. Amber lived with Mark and Brenda for a year, and, in 2007, she passed away unexpectedly. Mark can still recall the twinkle in her eyes. The bond they shared was so very special, and even though she was on this earth for such a short time, she made a true impact on people's lives. It was Amber who really opened Mark's eyes about the abilities of people with disabilities.

Five years ago, the Coates closed Elco Tap and moved to Sarasota, Florida. Their story doesn't end here, though. Since 2007, they've continued to donate to Turnstone. In fact, they named their business after the agency. Several years ago, Mark handed a check to Peggy Bell, then director of events at Turnstone. Upon receiving the check, Peggy replied, "You have no idea what it means to have you in Turnstone's corner."

Mark and Brenda never forgot these words, and when they were deciding what to call their business, they chose "In Turnstone's Corner." Turnstone Executive Director Nancy Louraine shares, "Mark and Brenda Coates' commitment to Turnstone is what helps keep the agency strong and moving forward. They continue to help and engage others in Florida and Indiana to help as well."

So, when visiting Sarasota, be sure to stop by In Turnstone's Corner and say hello to Mark and Brenda, our good friends in Florida. 🌻

THAT'S A WRAP

BOARD OF DIRECTORS GALA

On June 14, Turnstone held its record-breaking 12th Annual Board of Directors Gala at the Fort Wayne Country Club. This year, 248 members of the community attended the event. They, and our generous event sponsors and supporting foundations, contributed more than \$377,500, as well as \$95,000 in matching grants. Our mission moment was presented by Jim, Jan, and Luke Labas. Their words were heartfelt and sincere, and we appreciate their kindness and willingness to share their story.



Jim, Jan, and Luke Labas.

CORVETTE RAFFLE

On Thursday, October 11, John Zeimet of New Haven learned he had won a '66 'Vette in our Ninth Annual Classic Corvette Raffle. This year, the proceeds totaled over \$115,000 and will support Turnstone's programs and services. Thank you to FUN 101.7 WLDE, Sweetcars, WANE TV, Auctions America by RM, and Steel Dynamics for their support of the 2012 raffle. Thank you to all who supported this year's raffle—you are appreciated. Look for more information on our 10th Annual Classic Corvette Raffle soon!



This year's Corvette Raffle winner John Zeimet with Erin Arnold.

GOLF OUTING

Turnstone held another successful Golf Outing on September 6 at Autumn Ridge Golf Club. More than 110 people played in this year's outing, and joined by event sponsors and donors, raised more than \$51,000. Our thanks goes to Classic Café, Physicians Health Plan, Kernel Colada Popcorn, and Vera Bradley for

their generous in-kind donations. We also extend our thanks to the event sponsors, auction donors, players, and golf committee and volunteers for making this year's outing a success. Mark your calendars for our 2013 outing on September 12 at Autumn Ridge.



Volunteers from Bishop Luers Key Club.



The winning golf team of this year's outing with their scorekeeper.

TURNSTONE CRUISE-IN

On August 11, Turnstone held its Second Annual Cruise-In. This year, more than 50 cars, hot rods, and motorcycles were showcased during the event. The bake sale, silent auction, and activities for kids were a hit. Thank you to

all who came out in support of the Cruise-In, our sponsors, bakers, volunteers, and our planning committee—together we raised more than \$2,000 and made a few new friends, too!



2011–12 EVENT SPONSORS LISTINGS

CORVETTE 2011

Premier Sponsor
Auctions America by RM
Steel Dynamics, Inc.
Sweetwater Sound

GOLF 2011

Premier Sponsor
Physicians Health Plan
Pro Resources, Inc.

Gold Sponsor
APP Financial
Grabill Bank
Pizza Hut of Fort Wayne

Diamond Cart Sponsor
In Turnstone's Corner
Kelley Automotive Group
Lamplight Inn of Fort Wayne
SRT Prosthetics Orthotics
Steel Dynamics, Inc.

Silver Sponsor
Design Collaborative
Findley Financial Corp
Fort Wayne Orthopaedics
Michael Kinder & Sons, Inc.
Vera Bradley Designs, Inc.

T-shirt Sponsor
ATG Rehab
Avalon Wealth
Management
EP Graphics
First Federal Savings Bank
Godschalk & Associates
National Serv-all, Inc.
Rothberg Logan & Warsco

In-kind Sponsor
Classic Café

CASINO NIGHT 2012

Premier Sponsor
Physicians Health Plan
Pro Resources, Inc.

Gaming Room Sponsor
Godschalk & Associates
Prevail Prosthetics
Steel Dynamics, Inc.

Table Sponsor
Coliseum Lions Club
Comfort Keepers
Crosby Excavating
The Douple Family
Harlow Enterprises, Inc.
MaxCare Bionics
Dr. and Mrs. Alan McGee-In
memory of Susie
Heingartner
Salin Bank

T-shirt Sponsor
Daniel T. Arnold,
Attorney at Law
Michael Kinder & Sons, Inc.
Midwest Orthotic Services

Food & Beverage Sponsor
Coliseum Lions Club
Mr. Loren Eck
Edward Jones- Kirk Davis
Findley Financial Corp.
Glenbrook Rehab
& Skilled Nursing
Hoosier Metal Recycling
Knipscheer Collision Center
Loving Care Agency
Partner's 1st Credit Union
Wildman's

Sponsor

Fort Wayne Pediatrics
Gerald F. Wagner, Inc.
Terry Anderson Insurance

GALA 2012

Premier Sponsor
Physicians Health Plan
Pro Resources, Inc.

Gold Sponsor
Fort Wayne Orthopaedics
Godschalk Family
Foundation
Indiana Michigan Power
Medtronic
Pizza Hut of Fort Wayne
Pro Resources, Inc.
Rifkin Family Foundation
Steel Dynamics, Inc.
Vera Bradley Designs, Inc.

Silver Sponsor
Advanced Machine
& Tool Corp.
CB Richard Ellis Sturges
Do it Best Corp
LML Estate Management
In Honor of Percy Talati
Dr. Dane & Mary Louise
Miller Foundation
Medical Protective
Merill Lynch
Summit Mechanical
Sweetwater Sound
Waterfield Foundation

Table Sponsor
Lincoln Financial
Foundation

Bronze Sponsor

AALCO
ALFE Heat Treating
Ciocca Cleaning &
Restoration
DePuy Orthopaedics
Design Collaborative
Mr. and Mrs. Richard Fox
Gordon Food Service
Hylant Group
Lassus Brothers Oil
Midwest Orthotic Services
Midwest Pipe and Steel
Shambaugh & Son LP
Tower Bank
Wells Fargo Insurance
Services

Matching Grants

Anonymous
Carlie Cunningham
Foundation
Godschalk Family
Foundation
O'Rourke Schof Family
Foundation
Owen & Jean Pritchard
Foundation
PNC Bank
Mary E. Van Drew Charitable
Foundation

HATS OFF TO ...

The Howard P. Arnold Foundation and the Lincoln Financial Foundation for gifts made in support of the Dr. Robert Kimbrough Early Learning Center.

...

Mr. and Mrs. Dave Bear, EPCO Products Inc., First Presbyterian Church, Saint Vincent de Paul Church, and Saint Peter's Lutheran Church for supporting Turnstone's residential ramp building program.



This year we celebrated the building of the 500th ramp.

...

John Chapman Fund, General Motors, Community Foundation of Greater Fort Wayne, Dorset Charitable Trust, English Bonter Mitchell Foundation, Clinton E. Newman Foundation, Parrish Foundation, St. Joseph Community Health Foundation, and Taylor Chapel United Methodist Church for providing core program support.

...

33 Aquarium for a donation of items needed to get the fish tank in the Kimbrough Early Learning Center up and running again. The children and the fish appreciate your generosity.

...

Subway Systems for hosting a benefit concert this summer at the Bobeck Family Farm. Thank you to Subway Systems, the Bobeck family, Clayton Anderson, and to the many sponsors and attendees who made this concert a success.

Park Center for hosting a carnival at Turnstone during the 2012 United Way Day of Caring.

...

The Eric & Mary Baade Charitable Trust for the gift to install a folding partition wall in our new pediatric group therapy room.

...

The Foellinger Foundation for its strengthening organization grant awarded to the agency this year.

...

Indiana Youth Institute for underwriting the cost for staff of the Kimbrough Early Learning Center to attend valuable workshops and conferences on behavior management techniques.

...

K&K insurance, the IPFW Student Athlete Leadership Team, and the Master Works Foundation for their support of the agency's sports and recreation program.

...

M.E. Raker Foundation, The Lutheran Foundation, and the Carson and Rosemary Noecker Family Foundation for their support of Turnstone's therapeutic services.

...

Military Family Research Institute at Purdue University for selecting Turnstone for a Community Mobilization Grant to support the agency's efforts to help veterans with disabilities.

...

The Jerk League for donating the proceeds of its Annual Charity Golf Outing to Turnstone. The event raised more than \$4,700 in support of Turnstone's programs and services.

...

Fort Wayne Street Rod Association for hosting the 38th Annual Muddy River Run. A portion of the proceeds of this event support Turnstone's programs and services.

2011–12 BOARD OF DIRECTORS

CHAIR

Sharon Peters [Tower Trust Company](#)

VICE CHAIR

Kelly Clevenger [Phillips Financial Management](#)

SECRETARY

Tom Trent [Rothberg, Logan & Warsco](#)

TREASURER

Gary Thelen [Kelley Automotive](#)

ASSISTANT TREASURER

Richard Fox [Barrett & McNaghy](#)

Kathy Cass, [Pizza Hut of Fort Wayne](#)
 Robert Crosby, [R.E. Crosby, Inc.](#)
 Brad Gough, [Bradley Gough Diamonds](#)
 Vince Heiny, [Haller & Colvin](#)
 Jim Labas, [Weaver Popcorn](#)
 Vicki Leininger, [Hylant Group](#)
 Mike Lentine, [Sweetwater Sound](#)
 Barney Niezer, [Northeast Indiana Urology](#)
 Carol Rolland, [Consumer](#)
 Tracy Shellabarger, [Community Leader](#)
 Melissa Stout, [Merrill Lynch](#)
 Barry Sturges, [CB Richard Ellis Sturges](#)
 Dr. Jane Swiss, [University of Saint Francis](#)
 Theresa Wagler, [Steel Dynamics, Inc.](#)
 Debbie Wagner, [Do It Best Corp.](#)
 Irene Walters, [IPFW](#)
 Julie Weingartner, [Parent Advocate](#)
 Debra Williams, [Parkview Health](#)
 Jerry Witte, [PNC Bank](#)
 Daryl Yost, [Northeast Indiana Innovation Center](#)

WELCOME NEW STAFF MEMBERS

Jama Federspiel
ADS Program Assistant

Janell McIntosh
Executive Assistant

Laura Ramsey
Controller

Cathleen Scott
Speech Language
Pathologist

CHAIRMAN'S CIRCLE

Turnstone has created the Chairman's Circle, a gift club to recognize individual donors during the 2012–13 fiscal year. For more information on the Chairman's Circle, please contact Jennifer Neher at (260) 483-2100 or jennifer@turnstone.org.

Below are benefits that come with the various giving levels.

Bronze: \$250 to \$499

Quarterly update letters from executive director.

Silver: \$500 to \$999

Quarterly update letters from executive director and two tickets to Casino Night.

Gold: \$1,000 to \$2,499

Quarterly update letter and holiday letter from executive director, annual letter from board chair, and four tickets to Casino Night.

Diamond: \$2,500 to \$4,999

Quarterly update letter, holiday letter, annual letter, and six tickets to Casino Night.

Platinum: \$5,000 and above

Quarterly update letter, holiday letter, eight tickets to Casino Night, and lunch with executive director and board chair.



WHAT WE DO

Turnstone's mission is to "provide therapeutic, educational, wellness, and recreational programs to empower people with disabilities. As the only not-for-profit organization within northeast Indiana to provide a full range of rehabilitative, educational, wellness, athletic and recreational programs, and facilities to persons with physical disabilities and their families, Turnstone is creating possibilities. Following is a brief description of Turnstone's programs and services and the outcomes achieved by our clients, members, and their families.

KIMBROUGH EARLY LEARNING CENTER



Scarlet and London

The Dr. Robert Kimbrough Early Learning Center (KELC) provides full-day child-care, preschool, and before- and after-school care programs that address the unique physical, developmental, and social needs of children of all abilities. Each program is inclusive, incorporates the HighScope Curriculum, and provides a safe, accessible, child-centered environment.

FACTS & FIGURES

- **6,583** hours of preschool were provided for **73** children.
- **21,717** hours of child care were provided for **31** children, while another **28** children benefited from **5,922** hours of before- and after-school care.

"Since my child started coming to Turnstone, he has improved tremendously in his attitude and learning skills. Whenever there was a problem or a concern, his teachers have talked to me about what could be done to better the situation or resolve the problem."

SPORTS AND RECREATION

A designated Paralympic Sports Club since 2009, Turnstone offers numerous sports and recreational activities for children and adults with physical disabilities. Currently, Turnstone's Flyers make up three wheelchair basketball teams, three power soccer teams, and two sled hockey teams. Other activities offered include wheelchair tennis, bowling, boccia, and goalball.

FACTS & FIGURES

- **10,763** hours of adaptive sport and recreation activities were provided for **160** children and adults.

"I feel great in doing so many things on my own."



Eduardo



Gwen

THERAPEUTIC SERVICES

In April 2012, Turnstone celebrated the opening of The Madge Rothschild Pediatric Therapy Wing. This \$1.2 million, 10,000-square-foot expansion has provided Turnstone with the needed space to treat more children. The space has also created a fun, yet therapeutic, environment for children to explore the world around them. The space includes the Snoezelen® room, swing room, a climbing wall, augmentative alternative communication lab, a treehouse structure, and more.

Turnstone provides speech, physical, occupational, and aquatic therapy services to children and adults of all ages on a sliding fee scale based on income. No one is turned away for inability to pay. Turnstone therapists use a multidisciplinary approach and work with one another, as well as other program staff, when creating an individual plan of care for their clients. While the therapy discipline may differ, the ultimate goal remains the same—empowering children and adults and helping them maximize their independence.

FACTS & FIGURES

- **14,007** hours of therapy services were provided for **531** children.
- **1,202** hours of therapy services were provided for **81** adults.

"I have so much respect for everybody who is involved at Turnstone. Both of my children have been in therapies and preschool with Turnstone. They have accomplished every goal when doctors claimed they wouldn't. Everybody is so supportive of my family, and I feel like Turnstone is my family. I just want to say thank you to everybody at Turnstone for helping my family succeed."

ADULT DAY SERVICES

Turnstone's Adult Day Services (ADS) is the only program in the region that meets the unique needs of adults with physical disabilities. In addition to being a provider through C.H.O.I.C.E. and Medicaid Waiver, the program recently received a contract from the Veterans Administration to provide Adult Day services for veterans with disabilities. This program is also accredited by the Commission on Accreditation of Rehabilitation Facilities. ADS activities are designed to increase independence and opportunities for socialization, while providing respite for families.

FACTS & FIGURES

- **25,445** hours of Adult Day Services were provided for **109** adults with physical disabilities.

"My appreciation for Turnstone is very great. I will always support and recommend them to others. Turnstone saved my life. Before Turnstone, it was such a challenge on my own. Family support was great, but now I'm with friends that truly understand. Such a gift."



Martha

WHAT WE DO

EQUIPMENT LOAN

Turnstone accepts and lends gently used equipment to individuals who don't have the financial means to purchase it themselves. There is no fee to borrow equipment, and when it's no longer needed, it can be returned to Turnstone so that someone else in need may borrow it. Equipment available for loan includes walkers, wheelchairs, crutches, portable commodes, shower seats, and more.

FACTS & FIGURES

- **31** residential ramps were constructed by community volunteers.
- **226** pieces of adaptive equipment were loaned to **185** families.
- **6,211** one-way trips were subsidized on behalf of **74** individuals.



Zachariah and Zebidiah



Geiosha

RESIDENTIAL RAMP BUILDING

For more than two decades, Turnstone has helped increase Allen County residents' accessibility through a residential ramp building service. Each year, community volunteers dedicate countless hours of their time to design, plan, and construct wooden ramps to restore the independence of people with physical disabilities. This year Turnstone celebrated the building of the 500th ramp.

TRANSPORTATION & MOBILITY

For the past six years, Turnstone has partnered with the Community Transportation Network (CTN) to provide transportation to and from Turnstone to those adults receiving therapy or taking part in the Adult Day Services. Turnstone's partnership with CTN has resulted in dependable, safe, and customer-oriented travel for our clients. For those unable to pay for the service, Turnstone subsidizes transportation fees.



HEALTH AND WELLNESS

Turnstone's warm-water therapeutic pool and fitness program form the agency's Health and Wellness Center. These programs complement the therapeutic services offered by the agency. Turnstone's warm-water therapeutic pool is equipped with a hydraulic lift and is accessible to people who use wheelchairs, while the fitness program is complete with 29 pieces of adaptive strength-training and exercise equipment. Several specialty programs, such as the Parkinson's Exercise Group and Adaptive Yoga Class, are also offered.

FACTS & FIGURES

- **101** children received **672** hours of health and wellness or aquatic services.
- **448** adults recorded **15,933** hours of health and wellness or aquatic services.

"I rate Turnstone as high on every count I possibly can. Coming to the facility, I get a great lift in life. The camaraderie of staff and clients is the greatest. Everyone, staff and clients, are concerned for the welfare of one other."



Kenny

CASE MANAGEMENT

Turnstone's licensed social workers are the first point of contact for people interested in assessing services. Social workers coordinate the start of services and provide ongoing support and assistance for clients and families for as long as they receive our services. Social workers make referrals for other community services and assist in the application process as needed. The goal is to help people achieve a greater level of self-sufficiency.

FACTS & FIGURES

- **4,163** hours of case management were provided for **1,132** families.
- More than **300** calls regarding programs and services were fielded by social workers.

"I dearly love Turnstone. I call it 'my day away,' and I feel so much better when I return home. That's why I call it 'my day away.' I'm thankful for each and every one of you. I can't call just one name because all of you are just wonderful."



MEMORIALS & HONORARIUMS

Thanks to all who gave honoraria and memorials to Turnstone between May 1, and September 27, 2012.

(f) indicates individual was a member of Team Turnstone during Fort4Fitness. Please note, as some athletes raised funds online, not all donor gifts were received before Empower went to print. Donors not listed in this issue will be recognized in the March issue of Empower.

IN HONOR OF...

Tina Acosta^f

Mr. Rick Martin

Erin Arnold^f

Mr. & Mrs. Dan Arnold^f
Ms. Kaelen Arnold
Marie Auman Bell
Mrs. Trish Poursanidis
Mr. & Mrs. Dan Strack
Anonymous

Elizabeth Augustine^f

Ms. Amanda Weybright

Toye Berger^f

Ms. Paula Leon

Annie Bobilya^f

Mr. & Mrs. David Bobilya
Mr. Rick Oliphant
Mr. & Mrs. Robert Rowe

Don Bobilya's Birthday

Mr. & Mrs. David Bobilya

Greg Buse

Mrs. Marci Lew

Kelly Clevenger^f

Mr. Craig Clevenger
Mr. John Weber

David Dilley^f

Mrs. Patricia Dilley

Barb Eckrich's Birthday

Love all your
kids, grandkids,
great-grandkids, your
nephew and friends

Darlene Ehle^f

Teresa Brown
Mrs. Cyndi Coyne
Mr. Gerry Ehle
Ms. Harriet Lim
Mr. Howard Mesing
Ms. Julie Reynolds
Caran Williams

JaNae & Jason Fannin^f

Mr. Steve Brubaker
Mrs. Roberta Gangl^f
Ms. Stefanie Kruger

Dale & Amanda (Rupp) Gosset's Wedding

Mr. & Mrs. Mark Rupp

David Graney^f

Mr. Tim Bolin
Mrs. Sheila Goldthwaite
Nishantha Gunawardena
Mr. Albert Harants
Ms. Victoria Reed

Janet Griffin^f

Griffin Real Estate
Services, Inc.
Mrs. Jennifer Ruprecht

Sarah Hayes^f

Ms. Cathy Dee
Ms. Justine Wolford

Matt Heyman^f

Ms. Rachael Arendse
Mr. Mike Baerlin
Ms. Kelly Bassett
Mr. & Mrs. Gene Bowman
Ms. Susan Bowsher
Mr. & Mrs. Tom Brewer
Mr. Gene Casebere
Mr. & Mrs. Don Culbertson
Ms. Janet Dietsch
Mr. & Mrs. Lamar Dietsch
Mr. & Mrs. Jim Free
Mr. & Mrs. Mitch Free
Ms. Misty Heyman
Mr. Todd Heyman
Mr. & Mrs. Vic Hill
Mr. & Mrs. Steve Jennings
Mr. Mike Johnson
Mr. Dave Kesler
Mr. & Mrs. Matthew Lentz
Mr. & Mrs. Jeff Magsam
Mr. Roger McBride
Mr. & Mrs. Scott Pepple
Ms. Janelle Ridgway
Mr. & Mrs. Jeff Studebaker
Mr. Ron VanCamp
Mr. Ivan VanHorn

Mr. Jerry Vinson
Ms. Marcy Warner
Mrs. Hope Wright

Marguerite Horman^f

Knitting off Broadway
Lakeside Learning Garden
Mr. Ron Nahrwold
Ms. Elizabeth Stieglitz
Mr. Bill Swisher
Mr. Richard Trzynka
Mr. Greg Zern

Jenette Henry^f

Mr. & Mrs. Norbert
Sarrazine

Kevin Hughes^f

Ms. Bethany Ballard
Mr. Scott Hughes

Red Johnson

Mr. & Mrs. David Bobilya

Julie Ketcham

Mrs. Deborah Guebard
Mrs. Chanda Lichtsinn
Mrs. Sandra Totten
Mrs. Abby Wooldridge

Randall Kongar^f

Mr. Bob Burnsworth

The Labas Family

Weaver Popcorn
Foundation, Inc.

Greg & April Lass^f

Ms. Deana Croussore
Ms. Lynn Hersberger
Ms. Kathy Throckmorton

Alex Leckron^f

Mr. Bob Burnsworth
Mr. Terry Shockey

Amie Lindsay^f

Mrs. Ann Englehart
Mrs. Carolyn Stumph

Alfred Maloley's Birthday

Mrs. Marilyn Salon

Sheila McGee^f

Mr. Dave Carlisle
Mr. Duane Miller

Betty McMillen

Mrs. Julie Evans

Emily Mead

Dr. & Mrs. James Platt

Clara Minnich

Ms. Gloria Minnich

Rosemary Noecker

Mrs. Ginsel Havestick

Men & Women Overseas

Mr. Wesley Gamble

Amy Parsons^f

Mr. Robert Gibson

John Michael Polcsak

Mrs. Susan Seals

Angela Radford^f

Mr. & Mrs. Greg Johnson

Sammie Robinson

Mrs. Joy Dickerson
Family Dentistry P.C.
Lakeside Learning Garden
Ms. Elizabeth Stieglitz
Mr. Bill Swisher

Laz Rodriguez^f

Mr. Bob Burnsworth

Bridgette Sanders^f

ServPro of West Fort Wayne

Tyler Sarrazine^f

Mr. Bob Burnsworth

Julie Siebert

Mrs. Carolyn Siebert

Casey Sowers^f

Mrs. Bethany Ballard
Mrs. Julie Barth
Ms. Cecile Charais
Mrs. Patricia Christie

IN MEMORY OF...

Jay Baney

Mr. & Mrs. David Hughes

David Barnes

Ms. Mary Barnes
New Haven Women
of the Moose

Tom Baron

Mr. & Mrs. Bob Albertson

Betty Beckman

Mr. Fredrick Beckman

Todd Berning

Mr. & Mrs. Lyle Berning

Linda Bierbaum

Mr. & Mrs. John
Bierbaum
Mr. Mike Horn

Linda Bierbaum's Birthday

Mrs. Marge Megles-Norris

Ron Blackburn

Mr. & Mrs. Donny Disque

Maynard Bosserman

Dr. & Mrs. Jan Bosserman
Mr. & Mrs. Robert Boyer
Ms. Jan Brookhart
Ford-Chevrolet, Inc.
Burnworth-Zollars
Mr. & Mrs. Brent Campbell
Mr. & Mrs. Mike Carroll
Mr. & Mrs. Delbert Conrad
Mr. Warren Eckles
Ms. Marinell Fry
Ms. Jacki Greener
Mr. & Mrs. Steve Herdman
Mr. & Mrs. Gerry Lydy
Ms. Maxine Manahan
Mr. & Mrs. Max Moore
Mr. & Mrs. Ron Moore

Mr. & Mrs. Steve Stanford
Mrs. Kathryn Walper

Richard Bowlin

Mr. & Mrs. Richard Bailey
Mr. Richard Beck
Mr. Donald Bobilya
Dr. & Mrs. John Bormann
Mr. & Mrs. Stanley Bowlin
Mr. & Mrs. Mark Boyd
Mr. & Mrs. Joseph Dahm
Mr. David Daniel
Mr. & Mrs. Michael
Eikenberry
Mr. & Mrs. William Hefner
Ms. Carol Hoagland
Mr. & Mrs. Thomas
Kohrman
Ms. Janet Leininger
Mrs. Carol Lupke
Mrs. Ann McAlexander
Parkview Health
Mr. & Mrs. Stanford Rice

Mr. & Mrs. Paul Shaffer
Mr. & Mrs. Larry Sherer
Mrs. Martha Stefanek
Mr. & Mrs. Jeff Sturges
Mr. & Mrs. Alan Zirkle

Michael Boylen

Mr. & Mrs. Steven Cassidy
Mr. & Mrs. Joseph Dahm
Mike's Carwash, Inc.

Betty Buettgenbach

Mr. & Mrs. David Hughes

Paul Cavanaugh, Jr.

Asbury United
Methodist Church
Mr. & Mrs. Bruce Ashe
Mr. & Mrs. Richard Bugher
Mr. & Mrs. Paul
Cavanaugh, Sr.
Mrs. Susan Cavanaugh
Mr. & Mrs. Tom Clymer
Ms. Lil Cornett

IN HONOR OF (con't) ...

Mr. & Mrs. Richard Fox
Mr. Mike Hippie
Ms. Jodie Karrick
Mr. Troy Karrick
Mrs. Nancy Louraine
Mrs. Jill Mozena
Mrs. Angie O'Saben
Mrs. Jan Pardo
Mr. Don Schaffer

Dan Spangler^f

Mr. & Mrs. Thomas Haley

Christy Spencer^f

Findley Financial Corp.

Kelly Spitznagel^f

ServPro of West Fort Wayne
Mr. Kenneth Woodworth
Ms. Mary Woodworth

Chris and Susan Stauffer

Dr. Ronald Bell

Susan Steele^f

Ms. Betty Bubb
Ms. Jennifer Guebard
Mr. Harold Robinson

**Stonebraker-Stanford
Wedding**

Mr. & Mrs. David Bobilya

Gordon Styf

Mrs. Bridgette Clause

Jan Swygart

Ms. Kris Bohnstedt

**Our military and
their families**

Ms. Myrna Douglas

Parkinson's Therapists

Mr. & Mrs. Kenton
Buesching

Kent Turnbow^f

Mr. & Mrs. Max Turnbow

Team Turnstone

Ms. Sarah Aubrey^f
Mr. & Mrs. Dan Avery^f
Mrs. Deborah Beckman^f
Mrs. Toye Berger^f
Ms. Ellie Bogue^f
Mrs. Anna Bowman^f
Ms. Teresa Brown^f
Mr. Kevin Carretta^f
Ms. Sara Clagg^f
Mr. Tim Claxton^f

Mr. & Mrs. Kelly Clevenger^f

Mr. & Mrs. Bob Crosby
Mr. Dan Davis^f &
Ms. Anna Clark^f
Mrs. Jama Federspiel^f
Mr. & Mrs. Todd Findley^f
Findley Financial Corp.
Mr. & Mrs. Kenny Gerardot^f
Mr. Robert Gibson^f
Ms. Sarah Hayes^f
Ms. Jenette Henry^f
Mr. Nicholas Hursh
Mrs. Maria Kaufman^f
Mr. Jared Kent^f
Ms. Debbie Kovets^f
Mr. & Mrs. Greg Lass^f
Mr. & Mrs. Kevin Leininger
Mr. & Mrs. Mike Ley
Mrs. Amie Lindsay^f
Mrs. Nancy Louraine^f
Ms. Peg Maginn^f
Mr. Garrett Martz^f
Mr. Lance Miller^f
Mr. & Mrs. Bernard Niezer
Mr. Neal Niezer^f
Mrs. Sharon Kovets
Ms. Melissa Stout
Superior Van & Mobility
Dr. Jane Swiss
Mr. & Mrs. Thomas Trent^f
Ms. Sandra Vance^f
Mr. & Mrs. Arthur
Weingartner
Ms. Debra Williams
Mr. & Mrs. Jerry Witte
Mr. Kenneth Woodworth
Ms. Mary Woodworth

April & Missy Urban^f

Ms. Julie Martin
Mr. John Purcell
Mrs. Dawn Snyder
Ms. April Urban
Ms. Frances Urban
Ms. Christal Woods

Sam Walker^f

Ms. Beverly Zuber

Gary & Marilyn Wedler^f

Ms. Wilma Wilhelm

Tiffany Wehner^f

Ms. Rebecca Hawes

Nina Welfie^f

Mr. Bob Burnsworth

Molly Welfie^f

Mr. Bob Burnsworth

TURNSTONE LEGACY SOCIETY

Turnstone's Legacy Society recognizes and honors those thoughtful and generous individuals who have provided for Turnstone's future in their wills, trusts, and other estate plans. By including Turnstone in your estate plans, you help ensure the health and sustainability of the agency. For more information about the Legacy Society, please contact Executive Director Nancy Louraine at (260) 483-2100 or nancy@turnstone.org.

SAMPLE BEQUEST LANGUAGE

I give, devise, and bequeath to Turnstone Center for Children and Adults with Disabilities, a registered nonprofit in the state of Indiana, located at 3320 North Clinton, Fort Wayne, Indiana, the sum of \$____ (or ____ percent of my estate, or ____ percent of the residue of my estate) to be used for such purposes as the board of directors determines at the time this bequest is received.

Mia Welker

Dr. & Mrs. James Harris

Amanda Weybright^f

Mr. & Mrs. Adam Augustine

E.J. Whitney^f

Mr. Dan Bickel
Mr. & Mrs. Edward Whitney

Dan & Judi Wire

Mr. & Mrs. David Kelley

Dr. Daryl Yost^f

Mr. & Mrs. Joe Byers
Mr. David Long
Ms. Joanne Seaman
Dr. Steve Yager

Mr. & Mrs. Kerry Dickmeyer
Mr. & Mrs. James Forcum
Mr. & Mrs. Julian Franke
General Electric
Development Lab
Ms. Diana Goodman
Mrs. Julie Harmeyer
Ms. Janet Helfrich
Mr. & Mrs. Steve Hormann
JB Tool, Die &
Engineering, Inc.
Mr. & Mrs. David Kelley
Mr. & Mrs. Jack Kies
Mr. & Mrs. Elbert Lindsey
Mrs. Sherry Lytle
Ms. Peg Maginn
Mr. Walter Mattes
Mrs. Barb McKinnon
Ms. Cleo Mae Merriman
Mr. & Mrs. Gary Metzger
Mr. & Mrs. Jim Moran
Mr. & Mrs. Gregory Riker
Mr. Mark Schmidt
Mr. & Mrs. Steve Seifert

Mr. & Mrs. Jim Slubowski
Mr. & Mrs. Eric Smith
Mr. & Mrs. N. Daniel
Spangler
Mr. & Mrs. Mark Spears
Mr. & Mrs. Art Stacy
Ms. Jeanette Stevenson
United Methodist Church
Mr. & Mrs. Dale Jacobs

Ruth Cook

Mr. LeRoy Cook
Mr. & Mrs. Denis Goonen
Mr. & Mrs. Mark Miller

Mr. Cooper

Mr. & Mrs. Ross Ehle

Laura Couture

Mr. & Mrs. Ross Ehle

Lindsey Couture

Mr. & Mrs. Ross Ehle

Barbara Disser

Mrs. Suzanne Libbing

Herman Friedrich

Mr. & Mrs. Bob Crosby

Marjory Hale

Mr. & Mrs. Bud Mendenhall

Mark Haun

Mr. & Mrs. Jim Bennett
Mr. & Mrs. Ronald Chilcote
Mr. & Mrs. Jack Kramer
Mrs. Alice Masterson

Kurt Hecht

Mr. & Mrs. David Hughes

James Irving

Mr. & Mrs. Don Smith

Norm Johnson

Mr. & Mrs. John Wilmer

Jim & Betty Kelley

Ms. Barbara Kelley-Kraegel

Charles Kennedy

Ms. Margaret Hyde

Carlee Klotz

Mrs. Sharon Brockus

Steven Koch

Mr. & Mrs. Thomas Diemer

Ben Kreigh

Ms. Lonedra Kreigh

George Kuntz

Mr. & Mrs. Ross Ehle

Lana Landin

Mr. & Mrs. Keith Brown
Mr. & Mrs. Ron Dorman
Mr. & Mrs. Randy Eichel



Mr. & Mrs. George Gandolfo
 Mr. & Mrs. Joshua Insull
 Mrs. Judith Keys
 Mr. & Mrs. Dan Kinder
 Mr. & Mrs. Dennis Landin
 Mr. Charles Lauer
 Ms. Cynthia Lauer
 Mr. & Mrs. Ken Lauer
 Ms. Sandy Lauer
 Mr. & Mrs. Mike Ley
 Mr. & Mrs. Bradley Muncy
 Mr. & Mrs. Greg Muncy
 Mr. & Mrs. Dan Nelson
 Mr. Jerry Rowe
 Mr. & Mrs. Dan Staley
 Wagner-Meinert, LLC
 Mr. & Mrs. Dean L. Weilbaker

Deb Lane

Mr. & Mrs. Michael Kifowit

Paul Livingood

Mrs. Cindi Rolleston

Nickolas Mankoff

Ms. Julie Heeter

Eileen Martin

Ms. Megan Ardiszone
 Mr. & Mrs. Bill Heathman
 Mr. Tony Henry
 Mr. & Mrs. Mark Knafel
 Mrs. Jeanie Langschieid
 Ms. Bonnie Martin
 Mr. & Mrs. Jon McBride
 Mr. & Mrs. Bob Paulsen
 Mr. & Mrs. Steve Steiger
 Mr. & Mrs. Scott Stucky
 Mr. William Thomas
 Mrs. Cindy Watson

Patty Martone

Mr. & Mrs. Sharon Arnold
 Ms. Madeleine Baker
 Dr. E. Sharon Banks
 Ms. Marjorie Barnes
 Mr. & Mrs. Harold Bauer
 Mr. & Mrs. David Belschner
 Ms. Patricia Birkenbeul
 Mr. & Mrs. Victor Bobay
 Mr. & Mrs. Ernie Bojrab
 Mr. & Mrs. Ned Brenizer
 Mr. & Mrs. Jerry Burch
 Mr. Fred Burke
 Ms. Sharon Burns
 Dr. Carol Buttell
 Mr. & Mrs. Paul Clausen
 Ms. Mary Coats
 Mr. Bob Connelly
 Mr. and Mrs. Don Cooper
 Ms. Beverly Cowan
 Mr. & Mrs. John Cross
 Mr. & Mrs. Dale Doerffler
 Ms. Mary Dornick
 Mr. & Mrs. Don Elbrecht
 Mr. & Mrs. Derward Franke
 Mr. & Mrs. Carl Geist
 Doris Gray
 Mr. & Mrs. Dennis Hatfield
 Ms. Patti Hays
 Mr. & Mrs. John Heinze
 Mr. Larry Heller
 Mr. & Mrs. Frank Helmsing
 Mr. & Mrs. William Hicks
 Mrs. Becky Hill
 Mr. & Mrs. Robert Hines
 Mr. & Mrs. David Hughes
 Mr. & Mrs. Richard Inskip
 Ms. Aspasia Johns
 Mr. & Mrs. John Joustra
 Mr. Cyril Laycoff
 Ms. Mary Lee
 Mrs. Nancy Louraine
 Mrs. Doris Mattingly
 Mr. & Mrs. Ray Moore
 Mrs. Suzon Motz

Ms. Stella Pappas
 Ms. Barbara Parker
 Mr. & Mrs. Stan Passino
 Dr. & Mrs. James Platt
 Mr. & Mrs. John Popp
 Mr. & Mrs. Frank Potosky
 Ms. Sharon Reynolds
 Mr. & Mrs. Gene Rigsby
 Ms. Grace Rody
 Mr. & Mrs. Max Roesler
 Mr. David Rowan
 Mr. & Mrs. David Ruoff
 Mr. Donald Rushin
 Ms. Rose Ryan
 Ms. Phyllis Schaefer
 Mr. & Mrs. Jimmy Schindler
 Ms. Judith Sculley
 Mr. & Mrs. Tom Smith
 Cherie Somerville
 Mr. & Mrs. Chris Stavreti
 Mrs. Mary Steinacker
 Ms. Krista Stockman
 Ms. Judy Thompson
 Mr. & Mrs. Bill Townsend
 Mrs. Kelly Updike
 Mr. & Mrs. Keith Vautherot
 Mrs. Carol Venderley
 Mr. & Mrs. Jeff Waite
 Mr. & Mrs. Jerome Wetter
 Ms. Beth Wolf
 Mr. Terry Wyatt

Jim McKinnon

Mr. & Mrs. Julian Franke
 Mr. & Mrs. Terry Garman
 Mr. & Mrs. Richard Hill
 Mr. & Mrs. Jack Kies

Vera Melcher

Mr. & Mrs. Ray Melcher

Eleanor Mendenhall

Ms. Rebecca Rupright

Adam Mendenhall

Ms. Rebecca Rupright

Clara Minnich

Jerry Sorg

Edna Belle Motley

Mr. & Mrs. Walter Asp
 Ms. Kari Braun
 Ms. Patricia Carnes
 Mr. & Mrs. Brent Harris
 Dr. & Mrs. James Harris
 Mr. & Mrs. Ned Lantz
 Ms. Betty Martin
 Mr. Ed Stumpf
 Ms. Constance Zollars

Avis Murbach

Mr. & Mrs. Donald Johnson
 Ms. Linda Murbach
 Ms. Carolyn Roach

Bob Nordyke

Ms. Carol Diskey
 Mr. & Mrs. Alan Geller
 Mr. & Mrs. Scot Green
 Ms. Martha Guldin
 Ms. Phyllis Harrier
 Mrs. Nancy Louraine
 Ms. Sandra Macon
 Mr. & Mrs. Mark Rupp
 Mrs. Pat Syndram

Joseph O'Keeffe, Jr.

Pat Dodane
 Mr. & Mrs. Leon Fahling
 Mr. & Mrs. David Gillig
 Mr. & Mrs. Richard Johnson
 Mr. & Mrs. John Nowlan
 Mr. & Mrs. Tom Nycum
 Mrs. Charlene Pettit-Didier
 Ms. Carole Schneider
 Mr. & Mrs. Jim Schuemaker
 Ms. Kim Snell

Brida Ortner

Mr. & Mrs. Ron Barton
 Mr. & Mrs. Dayton Hake
 Mrs. Barbara Minich
 Mr. & Mrs. Norman Myers
 Ms. Carol Shaffer

Roger Eugene Parker

Mr. & Mrs. David Hughes

David Platt

Mr. & Mrs. Ryland Taliaferro

Ronald Ramy

Mr. & Mrs. Gannon Ramy
 Mr. E.J. Cucinelli

Don Recker

Dial-X Automated
 Equipment Inc.

Emily Ann Redmond

Ms. Carolyn Flock

Vivian Regedanz

Ms. Enid Laisure
 Mr. & Mrs. John Regedanz

Germaine Richardson

Mrs. Marge Megles-Norris
 Mr. & Mrs. Ryland Taliaferro

William Roemke

Mr. & Mrs. Ken Gerbers

Richard Rowe

Mr. & Mrs. Larry Ault
 Mrs. Sharon Brockus
 Mr. & Mrs. Steve Brockus
 Mr. & Mrs. Loren Carswell
 Mr. & Mrs. Jeffrey Cotta
 Mr. & Mrs. Carl Davis
 Ms. Mildred Ditmire
 Everest Excavating
 Mr. & Mrs. Jerry Gates
 Mr. & Mrs. Mark Gordon
 Mr. & Mrs. Lowell Hisey
 Mr. & Mrs. Paul Klotz
 Ms. Soni Oberleas
 Pearl Financial
 Ms. Deborah Rudd
 Mr. & Mrs. Troy Siquieros
 Mr. & Mrs. Gary Smalley
 Mr. & Mrs. Dallas Tousley
 Mrs. Maxine Warren
 Mr. & Mrs. Stan Wilhelm

Zelma Rupp

Mr. Galen Aeschliman
 Mrs. Theresa Amberger
 Mr. Robert Anderson
 The Bair CPA Group, Inc.
 Mrs. Carolyn Batchelder
 Mr. & Mrs. Jerry Batchelder
 Mr. & Mrs. Steve Batchelder
 Mr. & Mrs. Tom Beaver
 Mrs. Elaine Beck
 Dr. Ronald Bell
 Mr. Michael Berger
 Mrs. Janalee Bieberich
 Mrs. Bonnie Bogenschutz
 Ms. Bonnie Carroll
 Ms. Mary Beth Collins
 Mr. & Mrs. Anthony Colone
 Ms. Diane Corns
 Ms. Nila Crawford
 Mrs. Genny Daly
 Ms. Eleanor Ehinger
 Mr. & Mrs. Steve Ehinger
 Mrs. Marclyn Filler
 Mr. & Mrs. Robert Foote
 Mr. & Mrs. Dick Ford
 Mr. & Mrs. Alan Geller
 Mr. & Mrs. Robert Haley
 Mr. Larry Heller
 Mr. & Mrs. John Hurd
 Ms. Nancy Jenkins
 Mr. & Mrs. James Kaufman
 Mr. & Mrs. Mike Keesler

Mr. Merlin Kinsman
 Mrs. Joan Lawrence
 Mr. & Mrs. Ronald Lawson
 Mrs. Frances Lewis
 Mr. Tom Locke
 Mrs. Nancy Louraine
 Mr. & Mrs. Bob Lowden
 Mrs. Nancy Martin
 Mr. & Mrs. Grant Messmann
 Mr. Fredrick Miller
 Mr. & Mrs. John Miller
 Mr. & Mrs. Walter Nims
 Ms. Cynthia Purvis
 Mrs. Kathryn Reader
 Mr. & Mrs. Mark Rupp
 Mr. & Mrs. Philip Schnelker
 Mrs. Linda Singer
 Mr. & Mrs. Jim Springer
 Mrs. Barbara Stanski
 Mr. & Mrs. C.J. Steigmeyer
 Mrs. Kathleen Thieme
 Mr. & Mrs. Michael Trulock
 Mr. & Mrs. Randy Waite
 Mr. & Mrs. Kenneth Walter
 Mr. Norman Weible
 Mr. & Mrs. Jerry Witte
 Mrs. June Wyse
 Ms. Karen York
 Mr. & Mrs. Tim Zumbaugh

Janet Rzepka

Mr. Frank Rzepka

Robert Shellabarger

Ms. Madeleine Baker
 Mr. & Mrs. Kelly Clavenger
 Mrs. Nancy Louraine
 Mr. & Mrs. Greg Wehling

Betty Springer

Ms. Marie Auman
 Ms. Pauline Ballman
 Mr. & Mrs. Rick Donaghy
 Ms. Roberta Lee Gilbert
 Ms. Debbie Greene
 Ms. Katherine Greene
 Interior Products Supply
 Ms. Barbara Kluehn
 Mr. & Mrs. Jerry Mahnensmith
 Mr. & Mrs. Douglas Plev

George Stillman

Mr. & Mrs. Jeff Berndt
 Mr. & Mrs. Tom Berndt
 Mr. Paul Byerley
 Messiah's House of Yahvah
 Mrs. Barbara Stillman

Bob Stouffer

Mr. & Mrs. Eugene Allen
 Mr. Charles Allison
 Mr. & Mrs. Carl Bradley
 Mr. & Mrs. Richard Clark
 Mr. & Mrs. Don Connors
 Ms. Thelma Correa
 Mr. & Mrs. Thomas Cottrell
 Mr. & Mrs. Dennis Fischer
 Mr. & Mrs. David Fry
 Mr. Phillip Gutman
 Mr. & Mrs. Frank Guzik
 Mr. & Mrs. Carl Hartup
 Mr. & Mrs. David Kelley
 Ms. Jean Kinsey
 Mrs. Nancy Louraine
 Mr. & Mrs. Jerry Marlow
 Mr. & Mrs. Howard Meyer
 Ms. Betty Osborne
 Mrs. Barb Ottenweller
 Mr. Harry Papier
 Ms. Sandy Rorick
 Ms. Margaret Slack
 Ms. Loretta Smith
 Mrs. Susan Steele
 Ms. Jeanette Sterling
 Ms. Evelyn Teel
 Mr. Rod Walter

Sylvia Summers

Mr. Dave Johnson

Karen Tyner

Mr. & Mrs. Thomas Agness
 Mr. & Mrs. Bret Angel
 Mrs. Kathy Baer
 Mr. & Mrs. Art Bell
 Mrs. Mary Lou Bender
 Mrs. Jean Biggs
 Mr. & Mrs. Thomas Blume
 Mr. & Mrs. Robert Bragg
 Ms. Betty Bubbs
 Mr. Jon Butler
 Ms. Cecile Charais
 Mr. Mark Clark
 Ms. Ruth Corum
 Mr. & Mrs. Jim Didier
 Mr. & Mrs. Gary Eagles
 Mr. & Mrs. Charles Earty
 Mrs. Barbara Eckrich
 Mr. & Mrs. Lawrence Ewers
 Mr. & Mrs. John Ewers
 Mr. Leonard Ewers
 Mrs. Ned Ewers
 Mrs. Beth Farny
 Mr. & Mrs. Jerry Fawbush
 Mrs. Cindy Geisman
 Mr. & Mrs. Ken Gerbers
 Ms. Debbie Greene
 Mrs. Deborah Guebard
 Mr. Bill Hardman
 Mr. & Mrs. Bill Heffley
 Mr. & Mrs. Eric Heffley
 Mr. & Mrs. Vincent Heiny

Dr. Lucy Hess
 Mr. & Mrs. David Hughes
 Mr. & Mrs. Bill Kastner
 Mr. & Mrs. Michael Kifowit
 Mr. & Mrs. Kirkwood
 Mr. & Mrs. Bob Kyser
 Ms. Kathy Kyser
 Mr. & Mrs. Ken Laub
 Lick Creek Church of the
 Brethren
 Ms. Eileen Lloyd
 Mrs. Nancy Louraine
 Mrs. Adrienne Lyon
 Ms. Peg Maginn
 Mr. John Mann
 Dr. & Mrs. John Martin
 Mrs. Beth Moody
 Ms. & Mrs. Michael Musson
 Mr. & Mrs. Thomas
 Newport
 Mr. & Mrs. Walt Noll
 Mrs. Lori Norman
 Ms. Sally Nowak
 Mr. & Mrs. Art Renninger
 Mrs. Karen Rodenbeck
 Mrs. Cindi Rolleston
 Mrs. Maria Rondot
 Ms. Mary Russell
 Mrs. Liz Sanders
 Mr. & Mrs. Jimmy Schindler
 Mr. & Mrs. David Scudder
 Mr. & Mrs. Tom Sechler
 Mr. & Mrs. Tracy
 Shellabarger
 Dr. & Mrs. Hans Sheridan

Mr. & Mrs. Edward Snyder
 Mrs. Beverly Steinkamp
 Geraldine Sternal
 Mr. & Mrs. Lewis Stough
 Mrs. Margaret Sullivan
 Mrs. Pat Syndram
 Mr. & Mrs. Percy Talati
 Mrs. Marilyn Wedler
 Mrs. Becky Weimerskirch
 Ms. Marsha White
 Mr. & Mrs. John Wilmer
 Mr. & Mrs. Reid Wise
 Mr. & Mrs. Jerry Witte

Zella Warstler

Mrs. Nancy Boman-Walters

Martha White

Mrs. Phyllis J. Roby

Warren Wilhelm

Mrs. Carol Wilhelm

Paul Witte

Mr. & Mrs. David Bobilya
 Mr. & Mrs. Ernie Bojrab
 Mr. Kevin Carey
 Mr. & Mrs. George Cooper
 Mr. & Mrs. Joseph Dahm
 Mr. Gary Dillman
 Mr. & Mrs. John Eakin
 Mr. & Mrs. Michael
 Eikenberry
 Mr. & Mrs. Larry Fisher
 Mr. & Mrs. Gary Greulich

Mr. & Mrs. John Hackman
 Mr. & Mrs. Paul Hayden
 Mr. & Mrs. Joseph Horacek
 Mrs. Helen Huff
 Mr. & Mrs. Scott Jackson
 Mr. & Mrs. John Johnston
 Mr. & Mrs. Thomas Kaiser
 Ms. Karen Kasper
 Mr. & Mrs. Branin Lane
 Ms. Ellen LaRoe
 Mrs. Nancy Louraine
 Mr. & Mrs. Tom Maupin
 Dr. & Mrs. Wayne Miller
 Mr. & Mrs. Tim Moeller
 Mr. & Mrs. Ron Motycka
 PNC Bank
 Mr. & Mrs. James Pritchard
 Raytheon Systems Co.
 Mrs. Patricia Sager
 Mr. & Mrs. Tom Scare
 Ms. Karlee Schultz
 Mr. & Mrs. Lloyd Thompson
 Mr. & Mrs. James
 Thompson
 Mr. & Mrs. David Tyner
 Mr. & Mrs. Mark Veerkamp
 Mr. & Mrs. Mike Veth
 Mr. Gary Windmiller
 Mr. & Mrs. Jerry Witte
 Mr. & Mrs. Tim Witte
 Mrs. Mary Ann Ziembo

MONETARY DONOR LISTING

July 1, 2011 to June 30, 2012

The 100% Club
 AALCO Distributing
 Company, Inc.
 Ms. Janet Abbott
 Mr. Andrew Achenbach
 Mrs. Tina Acosta
 Mr. Tim Adam
 Mr. John Adams
 Mr. Lynn Adams
 Mr. and Mrs. Vernon Adams
 Adams Central
 Community Schools
 Mr. & Mrs. Larry Adelman
 Advanced Machine &
 Tool Corp.
 Northeast Indiana
 Chapter AFP
 Mr. & Mrs. Thomas Agness
 Ms. Doreen Agyeman
 Mr. & Mrs. Bob Albertson
 Mr. Dan Aldred
 Ms. Cheryl Alevizon
 Mr. & Mrs. Jeremy
 Alexander
 ALFE Heat Treating, Inc.
 Mr. & Mrs. Eugene Allen
 Allen County Public Library
 Mr. Steven Alles
 Mr. Charles Allison
 Mr. & Mrs. Jason Alt
 Ms. Gail Altekruze
 Mrs. Brenda Amburgey
 Fort Wayne Branch
 American Assc. of
 Univ. of Women
 American Mortgage
 & Realty
 Amicus Club
 Mrs. Nora Anderson
 Mrs. Patricia Anderson
 Mr. Terry Anderson
 Ms. Alice Andrews

Angela and Dick Weber
 Charitable Foundation
 Fund
 Mrs. Martha Anspach
 APP Financial
 Dr. & Mrs. William Argus
 Mrs. Brenda Armstrong
 Mrs. Dyan Armstrong
 Mr. & Mrs. Daniel Arnold
 Miss Erin Arnold
 Mr. John Arnold
 Mr. & Mrs. David
 Ashenfelter
 Mr. & Mrs. Walter Asp
 AT & T
 ATG Rehab
 Mr. & Mrs. Gary Atkins
 Mr. & Mrs. Doug Atkinson
 Ms. Sarah Aubrey
 Edward D. & Ione Auer
 Foundation
 Ms. Marie Auman
 Aunt Millie's Bakeries
 Automotive Color & Supply
 AWS Foundation
 B.A.E. Systems
 Platform Solutions
 Mr. & Mrs. Thomas Bada
 Mr. & Mrs. Brett Bade
 Mrs. Kathy Baer
 Mr. & Mrs. Mark Baeverstad
 Ms. Kathleen Baginski
 Dr. Robert Bahr
 Mr. & Mrs. Joe Baidinger
 Mr. & Mrs. Richard Bailey
 Ms. Madeleine Baker
 Mr. Mick Baker
 Mr. & Mrs. Joe Baldwin
 Ms. Bethany Ballard
 Ms. Pauline Ballman
 Ms. Cathy Ballou
 Ms. Marsha Baltzes
 Mrs. Karen Bandelier

Mr. & Mrs. Timothy
 Bannigan
 Mr. & Mrs. Joe Barger
 Mr. & Mrs. Joe Barile
 Mr. & Mrs. Mike Baron
 Mrs. Cindy Barron
 Mrs. Julie Barth
 Mrs. Lisa Bashford
 Mr. Robert Batchelder
 Mr. Kyle Bauer
 Mr. & Mrs. Stephen
 Baughman
 Mrs. Tonya Bayes
 Mr. & Mrs. Dave Bear
 Mr. & Mrs. Dave Beard
 Mrs. Deb Bearman
 Mrs. Connie Beasey
 Mrs. Terri Beauchot
 Mr. & Mrs. Tom Beaver
 Ms. Amy Beck
 Mr. Richard Beck
 Mr. & Mrs. W.T. Beckley
 Mrs. Deborah Beckman
 Mr. Frederick Beckman
 Mr. & Mrs. Richard Becraft
 Ms. Vicki Beeks
 Mr. & Mrs. David Beer
 Mr. & Mrs. Joe Beerbower
 Mr. & Mrs. Rick Begley
 Mr. & Mrs. Art Bell
 Bellshire Association
 Mr. & Mrs. Mike Bendall
 Mrs. Mary Lou Bender
 Mr. & Mrs. Carl Bennett
 Mr. Jason Bennett
 Mr. & Mrs. Jim Bennett
 Mr. Mike Bennington
 Ms. Susan Berndt
 Mr. & Mrs. Mark Berron
 Mrs. Jennifer Best
 Mr. & Mrs. Rick Beyham
 Ms. Theresa Bickel
 Mr. & Mrs. J. Bieber

Mr. & Mrs. Charles
 Bierbaum
 Mr. & Mrs. John
 Bierbaum
 Mr. Michael Biesiada
 Mrs. Connie Billings
 Mr. & Mrs. Robert Binns
 Mr. David Blakeslee
 Mr. & Mrs. Thomas Blee
 Ms. Linda Bloom
 Mr. & Mrs. Peter Bobeck
 Mr. & Mrs. David Bobilya
 Ms. Sharon Boese
 Mrs. Bonnie Bogenschutz
 Ms. Kris Bohnstedt
 Mr. & Mrs. Tyler Boleyn
 Mrs. Nancy Boman-Walters
 Mr. Thomas Bomersback
 Mr. & Mrs. Philip Bonahoom
 Mr. & Mrs. Ron Bonar
 Ms. Christine Bonsib
 Mrs. Gretchen Bonsib
 Ms. Ruth Booker
 Mrs. Kristen Boon
 Dr. & Mrs. John Bormann
 Mr. & Mrs. Mike Boswell
 Mr. & Mrs. John Botteron
 Mr. & Mrs. Stanley Bowlin
 Mrs. Anna Bowman
 Mrs. Kimberly Bowman
 Mr. & Mrs. Mark Boyd
 Mr. & Mrs. Carl Bradley
 Mrs. Sue Bradley
 Bradley Gough Diamonds
 Ms. Mary Anna Bradshaw
 Mr. & Mrs. Mike Brady
 Ms. Kathleen Brandt
 Mrs. Ruth Brassell
 Ms. Julie Braun
 Ms. Kari Braun
 Mr. & Mrs. Paul Braun
 Mr. & Mrs. Thomas Braun
 Mr. & Mrs. Daniel Brenner



Ms. Casi Bromelmeier
 Ms. Carol Brown
 Mr. & Mrs. Gary Brown
 Mr. & Mrs. Keith Brown
 Mr. Darrin Brueggemann
 Mr. & Mrs. Dwane Bruick
 Mrs. Evelyn Brunnegraff
 Mrs. Barbara Brust
 Mr. David Brzezinski
 Ms. Betty Bubb
 Mr. & Mrs. Kenton Buesching
 Mr. & Mrs. Richard Bugher
 Building Contractors Association
 Mr. & Mrs. David Burns
 Mr. Bob Burnsworth
 Burt, Blee, Dixon, Sutton & Bloom
 Carlie Cunningham Foundation
 Ms. Carol Busse
 Mr. Steve Butler
 Ms. Maricille Buuck
 Mr. Todd Buuck
 Mr. & Mrs. Daniel Cade
 Mr. & Mrs. Jack Caffray
 Mr. Charles Caley
 Ms. Kathy Callen
 Mr. & Mrs. Ben Campbell
 Mr. Larry Campbell
 Ms. Margaret Campbell
 Mr. & Mrs. Matt Campbell
 Mrs. Cheryl Capuyan
 Dr. Goldy Carbanaru
 Mr. & Mrs. Leroy Carcione
 Ms. Jennifer Cardone
 Mr. & Mrs. William Carey
 Mr. & Mrs. Tom Carlisle
 Mr. & Mrs. C.D. Carnahan
 Ms. Patricia Carnes
 Mr. & Mrs. Mike Carpenter
 Mr. Philip Carper
 Mr. & Mrs. Michael Carr
 Mrs. Kathy Carrier
 Mrs. J.J. Carroll
 Mr. & Mrs. Wayne Carson
 Mr. & Mrs. Brian Carteaux
 Mr. & Mrs. Mark Cass
 Mr. & Mrs. Thomas Castaldi
 Mrs. Martha Cavacini
 CB Richard Ellis Sturges
 Mr. & Mrs. Michael Cesario
 Mr. & Mrs. Charles Chaffee
 Mr. & Mrs. Todd Chaffee
 Challengers Basketball
 Ms. Anna Marie Chamar
 Ms. Carrie Chapman
 Mr. Steve Chapman
 John Chapman Fund
 Mrs. Cynthia Charles
 Ms. Marlaine Chase
 Mr. & Mrs. Judson Chasey
 Mrs. Adriana Chastain
 Mrs. Harriett Chastain
 Mr. & Mrs. Robert Cheek
 Mrs. Cindy Chenoweth
 Mr. & Mrs. Ronald Chilcote
 Mrs. Jane Childers
 Ms. Erma Chisholm
 Mr. & Mrs. Alex Choka
 Mr. & Mrs. Dipak Chowdhury
 Mrs. Linda Christ
 Mrs. Patricia Christie
 Mrs. Jodi Christle
 Mr. & Mrs. Joseph Christoff
 Mrs. Maureen Ciocca
 Ciocca Executive Cleaning
 Mr. Jason Clagg
 Mrs. Jean Clagg
 Mr. William Clagg
 Mr. & Mrs. Joshua Clapper
 Ms. Anna Clark
 Mr. Dick Clark
 Jack Clark
 Mr. & Mrs. John Clark
 Mr. & Mrs. Kevin Clark
 Mrs. Kiely Clark
 Mrs. Rhonda Clark

Mr. Richard Clark
 Mr. & Mrs. Richard Clark
 Mrs. Bridgette Clause
 Mr. & Mrs. Kelly Clavenger
 Mrs. Kathi Clifton
 Lesley Cline
 Mr. & Mrs. Murray Clugston
 CME Corporation
 CMS Roofing Inc.
 Mr. Lucas Coak
 Mr. & Mrs. Mark Coates
 Ms. Mary Coats
 Dr. & Mrs. Steve Coats
 Mr. & Mrs. Rick Cochran
 Mr. & Mrs. Matt Coffman
 Ms. Roberta Cohen
 Dr. & Mrs. Steven Cohen
 Coliseum Lions Club
 Mr. D. Bruce Collins
 Colorado Yurt Company
 Comfort Keepers
 Community Foundation of Greater Fort Wayne
 Ms. Mary Ellen Comstock
 Ms. April Connelley
 Mr. & Mrs. Don Connors
 Mrs. Maria Conroy
 Mr. Denis J. Cook
 Mr. Adam Coolman
 Mr. & Mrs. Brian Corajod
 Miss Tanya Cordial
 Mr. & Mrs. Gerard Cornelissen
 Mrs. Carol Cornell
 Ms. Thelma Correa
 Mr. & Mrs. Thomas Cottrell
 Council on Senior Services
 Mr. Chris Counterman
 Mr. & Mrs. Bruce Cox
 Mr. & Mrs. Dale Crabill
 Mr. Mel Crago
 Mrs. Sherry Cramer
 Mr. & Mrs. Rick Crandall
 Mr. William Crandall
 Mr. & Mrs. Charley Creclius
 Mr. Jeffrey Crohn
 Mr. & Mrs. Bob Crosby
 Ms. Carol Crosby
 Mr. & Mrs. Frank Crosby
 Mr. and Mrs. Steven Crosby
 Mr. & Mrs. Glenn Crowl
 Crown Battery Systems
 Mr. & Mrs. Don Culbertson
 Culver's of Fort Wayne
 Ms. Earlene Cunegin
 Mr. & Mrs. Robert Cupp
 Mr. & Mrs. Darrel Curneal
 Mrs. Nedra Curry
 Mrs. Rosetta Curry
 Mrs. Stefanie Custer
 Mr. Thomas Cutter
 CVS Caremark
 Charitable Trust
 D.O. McComb & Sons Family Fdtn.
 Dr. Mark Dabagia
 Mr. & Mrs. Mike Dager
 Mr. & Mrs. Joseph Dahm
 Mr. & Mrs. Mike Dahm
 Mrs. Genny Daly
 Mr. & Mrs. Justin Damerell
 Mr. & Mrs. Mark Davis
 Mr. & Mrs. Dennis Dammeyer
 Mr. & Mrs. Andy Dance
 Mr. David Daniel
 Ms. Lorrie Daniel
 Daniel T. Arnold, Attorney at Law
 Mr. Mike Darnall
 Ms. Janet Daugherty
 Mr. & Mrs. Tammy Daugherty
 Mrs. Nancy Davenport
 Mrs. Angela Davis
 Mr. Dan Davis
 Mr. Jack Davis
 Mrs. Jennifer Davis
 Mr. & Mrs. Raymond Davis

Ms. Janet Dawson
 Mr. & Mrs. Adam Day
 DeBrand Fine Chocolates
 Decatur Package Liquors, DPL
 Mrs. Jennifer Deffenbaugh
 Mr. & Mrs. Irwin Deister
 Mr. John Deitche
 Mrs. Phyllis Deitering
 Mr. & Mrs. James Delaney
 Mr. & Mrs. Tom Delong
 Mr. & Mrs. Erv Denig
 Mr. Lee Dennis
 Mr. Doug Dent
 DePuy, Inc.
 Mr. & Mrs. Robert Derek
 Ms. Donna Derloshon
 Design Collaborative
 Mr. & Mrs. Jerry DeTro
 Mrs. Lisa Dial
 Mrs. Deborah Didier
 Mr. & Mrs. Thomas Diemer
 Mr. Lamar Dietsch
 Mr. Alfred DiGregory
 Ms. Anita DiGregory
 Ms. Stacy Dilley
 Mr. & Mrs. Donny Disque
 Mr. & Mrs. Kelly Disser
 Ms. Cathy Diver
 Mr. Jeff Dix
 Do it Best Corp.
 Mr. & Mrs. Lawrence Dodane
 Mr. & Mrs. Bob Doell
 Mr. Mark Dolezal
 Mr. & Mrs. Rick Donaghy
 Mr. & Mrs. Michael Donlan
 Ms. Sara Donley
 Mr. & Mrs. Ron Dorman
 Dorset Charitable Trust
 Mr. Jeff Dotterer
 Ms. Myrna Douglas
 Ms. Magan Douglass
 Mr. & Mrs. Gregory Douple
 Mr. Joe Doust
 Mr. & Mrs. Kim Dove
 Mr. & Mrs. Larry Dove
 Mr. Roy Dow
 Dream Weaver Foundation, Inc.
 Dreamsoft, Inc.
 Mr. & Mrs. Patrick Drummer
 Mr. Robert Duffett
 Mr. & Mrs. Ron Duncan
 Dr. & Mrs. Ray Dushman
 Mrs. Barb DuVal
 E&B Paving, Inc.
 Mrs. Susan Eames
 Mrs. Vanessa Eash
 Mr. & Mrs. Loren Eck
 Mr. & Mrs. George Eckrich
 Mr. & Mrs. James Eckrich
 Eddie Merlot's
 Edward Jones Investments
 Edward M. & Mary McCrea Wilson Foundation
 Mrs. Lisa Edwards
 Mr. Paul Edwidge
 Mrs. Darlene Ehle
 Mr. & Mrs. Don Ehle
 Mr. & Mrs. Ross Ehle
 Mr. & Mrs. David Ehrman
 Mr. & Mrs. Randy Eichel
 Mr. & Mrs. Michael Eikenberry
 Ms. Jean Eisaman
 Mr. & Mrs. Paul Eisaman
 Mr. & Mrs. Ben Eisbart
 Mrs. Alleda Elam
 Mr. Dan Ellenberger
 Mr. & Mrs. Matthew Elliott
 Mr. & Mrs. Tom Ellis
 Ellis Company
 Mr. & Mrs. Steve Elmer
 Mr. & Mrs. Thomas Elyea
 Mr. & Mrs. Don Emerick
 Mr. & Mrs. John Emerick
 Mrs. Shirley Eng-Ku
 Mrs. Ann Englehart

English Bonter Mitchell Foundation
 EP Graphics
 EPCO Products, Inc.
 Erie Haven
 Mr. Darryl Esterline
 Ms. Kathryn Eubank
 Mr. & Mrs. Gene Evans
 Mrs. Julie Evans
 Mr. & Mrs. Harold Everett
 Ms. Carolyn Ewing
 Jack Ewing Charitable Trust
 Exelis
 Mr. James Ezell
 Ms. Cindy Falls
 Mr. Ron Jerry Falls
 Mrs. Beth Farny
 Ms. Marilyn Farrington
 Ms. Carolyn Fast
 Ms. Nancy Fecher
 Fedorcak Fabrication Inc.
 Mr. & Mrs. Tom Feichter
 Felderman Design Build
 Mr. and Mrs. Nate Felger
 Mr. Tom Felger
 The Fernando Foundation
 Mr. Ron Fiebig
 Ms. Julia Fiechter
 Fifth Third Bank
 Mr. Daniel Figgins
 Mr. & Mrs. Mike Findley
 Mr. Todd Findley
 Findley Financial Corp.
 Mr. & Mrs. Tom Fink
 Ms. Francile Firestine
 Mr. Dave Firman
 First Federal Bank
 First Federal Savings Bank
 First Presbyterian Church
 Mr. & Mrs. David Fischer
 Mr. & Mrs. Dennis Fischer
 Mrs. Catherine Fisher
 Ms. Judi Fisher
 Mr. Larry Fisher
 Mr. Mark D. Fisher
 Mr. & Mrs. Tom Fisher
 Mr. & Mrs. William Fitch
 Mrs. Peg Flack
 Mrs. Keli Flanagan
 Ms. Carolyn Flock
 Mr. & Mrs. Ken Flood
 Mr. Peter Floreno
 Foellinger Foundation
 Mr. & Mrs. Mark Fogle
 Mr. & Mrs. Chuck Foltz
 Mr. & Mrs. Dennis Foltz
 Ms. Amye Ford
 Mrs. Nancy Ford
 Mrs. Rebecca Ford
 Forest Park United Methodist Church
 Fort Wayne Metals Research
 Fort Wayne Neurology
 Fort Wayne Orthopaedics
 Fort Wayne Pediatrics, P.C.
 Fort Wayne Rocks
 Fort Wayne Street Rod Association
 Mr. & Mrs. Dave Foust
 Mr. & Mrs. Jerry Foust
 Mrs. Paula Fox
 Mr. & Mrs. Richard Fox
 Ms. Diana Fox Mustard
 The Framery
 Mr. & Mrs. Julian Franke
 Mr. & Mrs. Mark Fransen
 Mr. Craig Frazee
 Mrs. Denise Fredrick
 Freedom Motors
 Mr. & Mrs. Richard Freeland
 Ms. Lynn Freeman
 Ms. Karen Fries
 Ms. Kathryn Froebe
 Mr. Robert Fruchey
 Don R. Fruchey, Inc.
 Mr. & Mrs. David Fry
 Mr. & Mrs. Rod Fry
 Mr. & Mrs. Tim Fultz

- Mr. & Mrs. Mark Futter
Mr. & Mrs. Tom Gallmeyer
Mr. & Mrs. George Gandolfo
Mrs. Kelly Gangl
Mrs. Roberta Gangl
Mr. & Mrs. Bruce Gardner
Mr. & Mrs. Terry Garman
Ms. Lilly Garrett
Ms. Jeanne Garton
Ms. Iva Garvison
Mr. & Mrs. Tom Gaskill
Ms. Sandra Gast
Mr. & Mrs. Ed Gatke
GE Foundation
Ms. Mary Gebhard
General Motors
Generex
Dr. & Mrs. Basil Genetos
Mr. & Mrs. Thomas Gefpert
Gerald F. Wagner, Inc.
Mrs. Cheryl Gerard
Ms. Lynette Gerard
Mr. Patrick Gerardot
Mr. & Mrs. Ken Gerbers
Mr. & Mrs. Joe Gerig
Mr. & Mrs. Josh Gerow
Ms. Audrey Gerson
Ms. Janice Getty
Mr. & Mrs. John Giant
Mr. & Mrs. Ross Gibbons
Ms. Janet Gibson
Mr. Myer Gibson
Mr. Robert Gibson
Ms. Roberta Lee Gilbert
Mrs. Sharon Gillen
Mr. & Mrs. Orton Gilpin
Mr. Ken Gingrich
Mr. & Mrs. Dennis Girardot
Mr. & Mrs. Ron Girardot
Mrs. Melanie Glasper
Mr. & Mrs. John Glass
Glenbrook Dodge
Chrysler Jeep
Mrs. Theresa Godfrey
Mr. & Mrs. Jim Godschalk
Mr. Lavon Goebel
Mr. & Mrs. Andrew Goeglein
Mrs. Caryl Goldman
Mr. & Mrs. Trent Goldman
Ms. Carol Goldstein
Mr. & Mrs. Leonard Goldstein
Mr. & Mrs. Gene Gompf
Mr. Dave Gongwer
Ms. Tracy Gorjup
Mrs. Kathy Gorrell
Mrs. Stephany Gorrell
Mr. & Mrs. Bradley Gough
Grabill Bank
Grable Financial, Inc.
Graham Spencer
Mr. Dan Graly
Mr. & Mrs. John Grannan
Mrs. Molly Graves
Mrs. Nancy Graves
Mrs. Arlene Green
Mr. & Mrs. Norm Greenberg
Ms. Debbie Greene
Ms. Jeanne Greene
Ms. Katherine Greene
Mr. Mark Grieger
Ms. Linda Griffith
Mrs. Carolyn Griffiths
Ms. Katy Grosh
Mr. & Mrs. Donald Grote
Mr. Erik Grottness
Mrs. Jackie Gruesbeck
Mr. Timothy Grusenmeyer
Mrs. Bernadine Guebard
Mrs. Deborah Guebard
Mr. & Mrs. Jerry Guebard
Mrs. Pearl Gunsenhouer
Mr. & Mrs. David Gurney
Ms. Tracy Gustin
Mr. Ryan Guthrie
Mr. Phillip Gutman
Mr. & Mrs. Frank Guzik
Ms. Mary Gynn
Mr. & Mrs. H. Paul Haberly
Mr. & Mrs. Jay Habig
Darle Hagan
Ms. Joan Hagerman
Miss Cassandra Haines
Mr. Mark Haines
Haines Isenbarger & Skiba LLC
Mr. & Mrs. Thomas Haley
Ms. Betty Hall
Mrs. Melanie Hall
Ms. Rosalie Hamilton
Mr. Ron Hans
Ms. Joy Hansen
Ms. Pamela Hansen
Mr. Mark Hanson
Mr. Justin Harber
Ms. Beth Harding
Ms. Linda Hardwick
Ms. Kristi Harkenrider
Mr. & Mrs. Steve Harkness
Harlan United
Methodist Church
Harlow Enterprises
Mr. Greg Harper
Mr. William Harr
Mr. & Mrs. Brent Harris
Dr. & Mrs. James Harris
Mr. & Mrs. Ryan Harris
Harris & Associates, Inc.
Ms. Phyllis Hart
Mrs. Jessica Harthcock
Mr. Bill Hartman
Mr. Kent Hartman
Mr. & Mrs. Paul Hartman
Mr. & Mrs. Dennis Hartmann
Mr. & Mrs. Edward Hartung
Mr. & Mrs. Carl Hartup
Mr. & Mrs. Al Hartzler
Mr. & Mrs. James Harvey
Mr. Charles Hatten
Ms. Jacqueline Hauck
Mr. Jim Hauguel
Ms. Ginsel Haverstick
Hayner Foundation
Mr. & Mrs. Gil Haynie
Ms. Carol Heath
Mrs. Julia Hecke
Ms. Julie Heeter
Mr. & Mrs. William Hefner
Heidtman Family Foundation
Mr. & Mrs. Vincent Heiny
Ms. Joan Heinzelman
Ms. Marsha Heller
Ms. Teala Hellwarth
Mr. & Mrs. Bud Helm
Mrs. Mary Henderson
Ms. Andrea Henry
Ms. Jenette Henry
Mrs. Patricia Henry
Mrs. Andrea Hensler
Mr. & Mrs. Michael Herald
Mr. Dale Herndon
Dr. Lucy Hess
Mr. & Mrs. Gerald Hessert
Mr. Ron Heustis
Ms. Janet Heyman
Mr. Matt Heyman
Mrs. Denise Hicks
Mr. & Mrs. Charles Hill
Ms. Nicole Hill
Ms. Phyllis Hill
Mr. & Mrs. Richard Hill
Hilliard Lyons
Mr. Scott Hinderman
Mr. & Mrs. Eric Hinsey
Mr. Mike Hipple
Mr. Mark Hisey
Mr. & Mrs. Jim Hisier
Ms. Garnet Hisner
Ms. Brenda Hissong
Mrs. Mary Hitzemann
Ms. Carol Hoagland
Mr. Tony Hodge
Mr. & Mrs. Phil Hoepfner
Mr. & Mrs. Andrew Hoffman
Dr. & Mrs. Gregory Hoffman
Mr. & Mrs. Tim Hoffman
Mr. Patrick Hogan
Mr. Hubert Holley
Ms. Lynn Holliday
Ms. Marcey Hoolopeter
Hoosier Metal Recycling Co., Inc.
Mrs. Deb Hoover
Mr. & Mrs. William Hopkins
Ms. Sherri Horine
Ms. Shirley Horton
Mr. & Mrs. W. Michael Horton
Hospitality Management Advisors
Mr. & Mrs. James Houlihan
Mr. & Mrs. Phil Howard
Mrs. Sarah Howard
Howard P. Arnold Foundation
Mr. & Mrs. Daniel Howe
Mr. George Huber
Ms. Hope Huber
Mr. & Mrs. David Hughes
Mr. Kevin Hughes
Mr. Scott Hughes
Mr. & Mrs. Bob Hunt
Ms. Jill Hunter
Hyland Group
I.M.I.
Mr. Lahe Ihmah
Mrs. Susan Imler
Indiana Michigan Power
Indiana Ready Mixed Concrete Assoc
Indiana Youth Institute, Inc.
Mr. & Mrs. Richard Inskeep
Mr. & Mrs. Joshua Insull
Ms. Jodi Ann Intelicato
Interior Products Supply
International Paper Company
Harmony 19 IOOF
IPFW Department of Nursing
IPFW Speech & Hearing Club
IPFW Student Athlete Leadership Team
Mr. & Mrs. Blane Irving
Ms. Barbara Jacobs
Mr. & Mrs. Egbert Jarboe
JAT of Fort Wayne, Inc.
Mrs. Karen Jenkins
Dr. & Mrs. Eric Jenkinson
Mr. & Mrs. Steve Jennings
Ms. Anne Jensen
Ms. Stephanie Jentgen
JERK League
Mr. & Mrs. Bob Jesse
JFLendingahand
Mr. Charles Jinks
Mr. Jeffrey Johanningsmeier
Mr. Dave Johnson
Mr. & Mrs. Donald Johnson
Mr. Heath Johnson
Ms. Naomi Johnson
Mr. & Mrs. Richard Johnson
Mr. Donald C. Jones
Mr. & Mrs. Glenn Jones
Mr. & Mrs. Kermit Jones
Mr. Thomas Jones
Mrs. Suzanne Jontz
Journal Gazette Foundation
K & K Insurance
Dr. & Mrs. Rudy Kachmann
Miss Deborah Kady
Mr. Mark Kady
Mr. & Mrs. Steven Kady
Kappa Kappa Kappa
Gamma Lambda Chapter
Ms. Jodie Karrick
Mrs. Sandra Karrick
Mr. Troy Karrick
Ms. Nancy Kartholl
Ms. Janet Kasner
Ms. Amy Katcherian
Mr. & Mrs. William Kautz
Mr. & Mrs. John Keesler
Ms. Ruth Ann Keisler
Mr. Kurt Keller
Mr. & Mrs. David Kelley
Mr. & Mrs. Jimmy Kelley
Mr. Matt Kelley
Kelley Automotive Group
Kelley Buick GMC
Kelley Foundation
Mrs. Angie Kelly-Pheifer
Mr. Douglas Kelsey
Ms. Jane Keltch
Mr. Philip Kennedy
Mr. Jared Kent
Mrs. Jeannette Kent
Mrs. Linda Kerr
Mr. Joe Kessler
Mrs. Melissa Kessler
Ms. Julie Ketcham
Mrs. Judith Keys
Kids in Disability Situations
Mr. & Mrs. Patrick Kiel
Mr. & Mrs. Jack Kies
Mrs. Kay Kiess
Mr. & Mrs. Michael Kifowit
Mr. & Mrs. Thomas Kimbrough
Mr. & Mrs. Gary Kimpel
Mrs. Michelle Kimpel
Mr. & Mrs. Dan Kinder
Mr. & Mrs. William Kinder
Mr. & Mrs. Allen King
Ms. Tamara King
Ms. Jean Kinsey
Mrs. Sandra Kinsey
Mr. Scott Kinsey
Mrs. Marjorie Kiracofe
Mrs. Carol Kirchhofer
Mr. & Mrs. Buzz Kirkwood
Mr. & Mrs. Charles Kitchen
Dr. Anne Kittendorf
Kiwanis Club of NE Fort Wayne
Ms. Barbara Klæhn
Mrs. Martha Kleber
Ms. Linda Klenke
Mr. & Mrs. Tim Klingensmith
Mr. Karl Klingler
Mr. & Mrs. Jim Klopfenstein
Mrs. Danielle Klotz
Mr. Eric Knipscheer
Mr. Christopher Knoblauch
Mrs. Carol Knuappel
Mr. & Mrs. David Kochanski
Mr. & Mrs. Jim Koday
Mr. & Mrs. Frank Koehl
Mr. & Mrs. John Koehler
Ms. Jill Koehlinger
Mr. & Mrs. Randy Koepke
Mrs. Linda Koester
Mrs. Patricia Kohart
Mr. & Mrs. Robert Kohlmeier
Mr. & Mrs. Gene Kohn
Mr. & Mrs. Thomas Kohnman
Ms. Linda Koithahn
Mr. & Mrs. C.J. Koop
Mr. & Mrs. Jerry Koos
Mr. & Mrs. Jack Kramer
Ms. Lonedra Kreigh
Mrs. Beth Krill
Mr. Dennis Krist
Ms. Debra Krivacs
Krouse, Kern & Co., Inc.
Mr. Edward H. Krueckeberg
Mr. Michael Kuehn
Mrs. Tracey Kuras
Mr. & Mrs. Jim Kurtz
Mr. & Mrs. Bob Kyser
Mr. & Mrs. Jim Labas
Mr. & Mrs. Jeff Ladd
Dr. & Mrs. Don Lahrman
Mr. & Mrs. Greg Lambert
Mr. & Mrs. Michael Lambert
Mr. & Mrs. Byron Lamm
Mr. & Mrs. Dennis Landin
Mr. Michael Landram



Mr. Jeremy Lane
 Mr. Mike Lane
 Ms. Reenae Lane
 Mr. & Mrs. Ned Lantz
 Mr. & Mrs. Karl LaPan
 Mr. Kyle Lappin
 Mr. & Mrs. James Larson
 Mr. Donald Lassiter
 Mr. & Mrs. Todd Lassus
 Lassus Bros. Oil,
 Inc. Foundation
 Mr. Charles Lauer
 Mr. Stephen Lauer
 Mr. & Mrs. John Laurie
 Ms. Anne Lawrence
 Mrs. Rhonda Lawrence
 Mr. Vincent Lawrence
 Mr. Keith Lawson
 Mrs. Dorothy Lazoff
 Dr. Thomas Lazoff
 LCPA Group LTD
 Mr. & Mrs. Ted Lebrecht
 Mr. Robert Leckron
 Ms. Lauren Lee
 Mr. Dale Lehman
 Mrs. Teresa Leabee
 Ms. Janet Leininger
 Mr. & Mrs. Kevin Leininger
 Ms. Nancy Leininger
 Mr. & Mrs. Robert Lemon
 Mr. Larry Lents
 Mr. James Lestarge
 Mrs. Marci Lew
 Mr. & Mrs. Mike Ley
 Mrs. Suzanne Libbing
 Mrs. Barbara Lichtsinn
 Mrs. Chanda Lichtsinn
 Ms. Jennifer Lietzke
 Mr. & Mrs. Thomas Liffick
 Lima Road Dentistry
 Lincoln Financial Fdn.
 Mrs. Vicki Linder
 Mrs. Amie Lindsay
 Ms. Karen Line
 Mrs. Joan Lining
 Ms. Edith Linker
 Mr. & Mrs. Steven
 Linsenmayer
 Mr. Richard Lintner
 Mr. & Mrs. Kent Litchin
 Mr. & Mrs. Arthur Litton
 Mr. & Mrs. Ted Litzenberg
 LML Estate
 Management Corp.
 Mrs. Shelley Lochner
 Ms. Mary Locke
 Mr. Arthur Loeffler
 Mr. & Mrs. Rick Long
 Keith & Jeanne Longworth
 Mr. & Mrs. Dick Lose
 Mr. & Mrs. Joe Louraine
 Mrs. Nancy Louraine
 Ms. Stephanie Louraine
 Mrs. Michelle Love
 Ms. Rochele Lovell
 Loving Care Agency
 Mr. Donald Lugo
 Mr. Steve Lundergan
 Mrs. Carol Lupke
 The Lutheran Foundation
 Lutheran Health
 Network - Dupont
 Mr. & Mrs. Greg Lynch
 Mrs. Adrienne Lyon
 Mrs. Sherry Lytle
 M.E. Raker Foundation, Inc.
 Dr. & Mrs. Jerry Mackel
 Ms. Elise Macomber
 Madelon Rothschild
 Foundation
 Mrs. Jeri Magdy
 Magee-O'Connor
 Foundation
 Ms. Nancy Magi
 Ms. Peg Maginn
 Mr. & Mrs. Jerry
 Mahnensmith
 Ms. Jenny Maldonado
 Mr. & Mrs. James Mallers
 Mr. Alfred Maloley

Ms. Sheri Manella
 Ms. Andrea Manor
 Manor Park Association
 Mrs. Nancy Manske
 Mrs. Joyce Marcher
 Mr. & Mrs. James
 Marcucci
 Ms. Kristin Marcucci
 Mr. & Mrs. Thomas
 Marcucci
 Mr. & Mrs. Lockwood
 Marine
 Mark of Distinction
 Mr. & Mrs. Ronald Marker
 Markle Bank
 Mr. & Mrs. Jerry Marlow
 Mr. & Mrs. Andrew Martin
 Ms. Betty Martin
 Mr. & Mrs. Craig Martin
 Mr. & Mrs. David Martin
 Martin Glass Company
 Mr. Tony Martone
 Mr. Garrett Martz
 Mary Margaret Stucky
 Foundation
 Dr. Kirk Masten
 Master Spas, Inc.
 Mrs. Jane Masters
 Mrs. Alice Masterson
 Matilda Jane
 Ms. Sue Mau
 Maximus Foundation
 Mr. & Mrs. Jim Maxson
 Ms. Kaley Mayes
 Mr. Stan McAbee
 Mr. & Mrs. Gary McAfee
 Mrs. Ann McAlexander
 Mr. & Mrs. Donald McArdle
 Mrs. Marilyn McArdle
 Dr. & Mrs. Michael McArdle
 Mr. & Mrs. Shawn McArdle
 Mr. & Mrs. Tim McArdle
 Dr. Craig McBride
 Mr. & Mrs. Rick
 McCampbell
 Mrs. Rose McComas
 Mr. Doug McComb
 Mrs. Callie McCool
 Mr. & Mrs. Mark McCoy
 Mrs. Betty McCrory
 Mrs. Judith McDonald
 Ms. Michelle McDonald
 Ms. Lydia McEvoy
 Ms. Pat McGary
 Mrs. Jennifer McGinnis
 Mrs. Mary Elizabeth
 McGinnis
 Ms. A.S. McIntyre
 Mr. & Mrs. Maurice
 McIntyre
 Mr. & Mrs. John McKay
 Mr. & Mrs. Joe McKenna
 Mr. John McKibben
 Mr. Jack McLaughlin
 Mr. & Mrs. John McLaughlin
 McMillen Foundation
 Mrs. Michele McNeill
 Mr. & Mrs. Fred McNulty
 Ms. Emily Mead
 Mr. & Mrs. Warren Mead
 MEBAC Inc.
 Medical Protective
 Company
 Medtronic Spinal
 & Biologics
 Ms. Leslie Megison
 Mrs. Marge Megles-Norris
 Dr. & Mrs. John J. Meier
 Ms. Diane Melching
 Mr. & Mrs. David Melton
 Mr. & Mrs. Bud Mendenhall
 Mr. & Mrs. Tom Merchant
 Merrill Lynch
 Mr. William Messner
 Ms. Beverly Meyer
 Mr. & Mrs. David Meyer
 Mr. & Mrs. Howard Meyer
 Mr. & Mrs. Robert Meyer
 Ms. Tonya Meyer
 Mr. & Mrs. Brent Meyers

Mr. Donald Meyers
 Mr. John Meyers
 Michael Kinder and
 Sons, Inc.
 Mr. & Mrs. Keith Michell
 Midwest Orthotic Services
 Midwest Paper Products
 Midwest Pipe and Steel Inc.
 Ms. Garnett Miller
 Mrs. Judy Miller
 Ms. Kim Miller
 Mr. Lance Miller
 Mr. & Mrs. Leo Miller
 Mr. & Mrs. Mark Miller
 Mrs. Molly Miller
 Ms. Susan Miller
 Dr. Dane and Louise
 Miller Foundation
 Mrs. Deb Milligan
 Mr. & Mrs. Michael Millikan
 Mr. & Mrs. Mark Minnick
 Mr. & Mrs. Todd Minnick
 Mr. Ty Minnick
 Mr. & Mrs. David Mitchell
 Mobility SVM, LLC
 Mr. & Mrs. Dave Mock
 Mr. & Mrs. Rory Moehnke
 Mr. & Mrs. Gary Monteith
 Ms. Christine Moore
 Mrs. Jacki Moore
 Mrs. Virginia Moore
 Mr. & Mrs. David Moran
 Ms. Diane Mory
 Ms. Sharon Mowrer
 Mrs. Sadonna Muldoon
 Mr. & Mrs. Bradley Muncy
 Mr. Gregg Munro
 Ms. Linda Murbach
 Mr. & Mrs. Kevin Murphy
 Mr. & Mrs. Michael Murrell
 Mr. & Mrs. Paul Musson
 Mrs. Abbe Muta
 Ms. Emily Myatt
 Mrs. Elizabeth Nagel
 Ms. Sallie Naltner
 Miss Jennifer Neher
 Mr. & Mrs. Lee Neher
 Mr. & Mrs. Dan Nelson
 Mrs. Jane Nelson
 Ms. Christy Neuhaus
 Mr. & Mrs. Thomas
 Neuhaus
 Ms. Lillian Neukircher
 Mr. & Mrs. Richard Neuok
 Mrs. Jennifer New
 Mrs. Cheryl Newbauer
 Mr. & Mrs. Robert Newell
 Clinton E. Newman
 Foundation
 Mr. & Mrs. Dave Nichols
 Mrs. Get W. Nichols
 Mrs. Helen Nichols
 The Nichols Company
 Dr. & Mrs. Jeffrey Nickel
 Ms. Sherry Nidlinger
 Ms. Cathy Niemeyer
 Mr. & Mrs. Bernard Niezer
 Dr. & Mrs. Tom Nill
 NIPSCO
 Ms. Suzanne Noblett
 Mrs. Rosemary Noecker
 Mr. David Noll
 Mr. & Mrs. Walt Noll
 Ms. Linda Nord
 Mr. & Mrs. Eric Norman
 Ms. Colleen Norris
 Mr. & Mrs. John Nowlan
 Mr. & Mrs. Glen Nuttle
 Mrs. Beth Nygaard
 Mrs. Patricia Oberley
 Mr. Daniel O'Connor
 Mr. & Mrs. Greg O'Daniel
 Mr. Robert O'Dell
 Mr. & Mrs. Ray Ohlman
 Mr. Fred Olson
 Mr. & Mrs. Mike Olson
 Mr. & Mrs. Richard Olson
 Mr. & Mrs. Dan O'Neill
 O'Rourke-Schof Family
 Foundation

Mrs. Angie O'Saben
 Ms. Betty Osborne
 Mr. & Mrs. Kurt Ostrow
 Ms. Barb Ottenweller
 Mrs. Daun Outman
 Mr. & Mrs. Randy Outman
 Mrs. Anna Outten
 Dr. & Mrs. C. James Owen
 Owen and Jean Pritchard
 Foundation
 Mrs. Linda Oxenrider
 The Oyster Bar
 Mrs. Rise Padgett
 Mrs. Wilma Page
 Mr. Thomas Pallone
 Pampered Coach
 Truck Center
 Ms. Linda Panico
 Ms. Judith Panoch
 Mr. Peter Paonessa
 Mr. & Mrs. Larry Papenfuss
 Mr. Harry Papier
 Paragon Medical
 Paragon Tube Corporation
 Parco, Inc.
 Mrs. Jan Pardo
 Mr. & Mrs. Dan Parker
 Mr. & Mrs. Samuel Parkison
 Parkview Community Health
 Parrish Foundation
 Parrot Charitable
 Foundation
 Partner's 1st Fed.
 Credit Union
 Mr. & Mrs. Martin Pastura
 Paul & Virginia Yergens
 Rogers Foundation
 Mrs. Amy Patton
 Patton Heating & Cooling
 Mr. & Mrs. Jason Paxson
 Mr. Lance Paxson
 Mr. Ron Paxson
 Mr. Walter Paxson
 Mr. Willie Peacock
 Mrs. Beth Pearson
 Mrs. Amy Peckinpaugh
 Mr. Donald Peebles
 Mr. & Mrs. Chad Pequignot
 Ms. Tina Perez
 Ms. Diane Perrigey
 Mr. & Mrs. Douglas Perry
 Mr. & Mrs. Fred Peters
 Petroleum Traders
 Mr. Anthony Pettersson
 Mr. Michael Pettibone
 Mrs. Charlene Pettit-Didier
 Mrs. Lesley Pfleging
 Mr. Richard Phillips
 Mrs. Rita Phillips
 Physical Medicine
 Consultants
 Physicians Health Plan
 Ms. Angela Picillo
 Mr. & Mrs. Timothy
 Piekarski
 Mr. & Mrs. Scott
 Piepenbrink
 Mr. & Mrs. Charles Piwowar
 Pizza Hut of
 Fort Wayne, Inc.
 Mr. & Mrs. Ron Plassman
 Dr. & Mrs. James Platt
 Mr. & Mrs. Douglas Plew
 Mr. & Mrs. James Plumb
 Plymouth Congregational
 Church
 PNC Bank Charitable Trusts
 PNC Foundation
 Mr. Richard Poinsett
 Mr. & Mrs. James Poiry
 Mr. & Mrs. John Poling
 Mrs. Stacey Pomeroy
 Mrs. Kristy Ponder
 Ms. Brenda Poore
 Ms. Linda Popson
 Mr. & Mrs. Ron Porter
 Power Soccer Shop
 Mr. & Dr. Shawn
 Prendergast

- Prevail Prosthetics
and Orthotics
Mrs. Phyllis Price
Dr. Marvin Priddy
Mr. & Mrs. Robert Priest
Mr. David Priestap
Mrs. Heidi Priestap
Ms. Nancy Priestap
Pro Resources, Inc.
Mr. Gary Probst
Mr. Peter Proctor
Prophet Sisters Foundation
Mrs. Jessica Prothero
Psi Iota Xi Sorority,
Theta Theta Chapter
Mr. John Przybycin
PI Chapter Psi Iota Sorority
Ms. Evangeline Pulliam
Ms. Janean Putman
Mr. & Mrs. Charles Putt
Mr. Kenn Putt
Quadrant EPP
Mr. & Mrs. Jim Quinn
Ms. Lois Raber
Mr. & Mrs. Mark Racine
Ms. Deborah Radford
Mr. & Mrs. Daniel Ramirez
Dr. & Mrs. Sisira Ranasinghe
Mr. James Ray
RE Crosby
Ms. Victoria Reed
Rehabilitation Hospital
of FW
Mrs. Beverly Reidenbach
Mr. & Mrs. John Reimbold
Mrs. Cheryl Reimund
Ms. Julie Reinking
Mr. Bob Reitz
Mr. Steve Reitz
Mr. & Mrs. Bob Relitz
Mr. & Mrs. Don
Remenschneider
Dr. & Mrs. Paul Reszel
Mr. Carsten Retrum
Mr. & Mrs. Gary Reynolds
Ms. Janet Rhinehalt
Mr. & Mrs. Stanford Rice
Ms. Cynthia Rice - Hogan
Mr. Larry Rich
Mr. James Richardson
Mrs. Janice Richardson
Mr. Weldon Richman
Mr. Roger Rife
Rifkin Family Foundation
Ms. Barbara Rinehart
Ms. Geraldine Ringland
RKM
Ms. Carolyn Roach
Ms. Tiffany Roberts
Mr. Donald Robertson
Mr. & Mrs. Gene Robertson
Mr. Christopher Robinson
Mr. & Mrs. Scott Robinson
Mr. Garland Roby
Mrs. Phyllis J. Roby
Mrs. Karen Rodenbeck
Mr. & Mrs. Gregory Roebel
Roemke Farms
Ms. Carol Rogers
Mr. & Mrs. Kevin Rogers
Mrs. Susan Rogers
Ms. Mary Beth Rohr
Mr. & Mrs. Carl Rolfson
Ms. Carol Rolland
Mr. & Mrs. Ian Rolland
Mrs. Patricia Roller
Mrs. Cindi Rolleston
Mr. & Mrs. Gregory Romy
Mr. Doug Rood
Ms. Sandy Rorick
Mr. Gregory Rose
Mr. & Mrs. Don Ross
Mrs. Lori Ross
Mr. & Mrs. Marvin Ross
Mr. Matt Rottinger
Ms. Denise Roudebush
Ms. Mary Roussel
Mr. & Mrs. Mac Routen
Mr. & Mrs. Richard Roy
Ms. Catherine Ruane
Rudd Equipment
Mr. Arthur Ruddle
Miss Paige Rudolph
Mrs. Shannon Rumschlag
Mr. & Mrs. Robert Rupert
Mr. & Mrs. Mark Rupp
Mrs. Dianna Ryan
Mr. & Mrs. Richard Ryan
Mr. Frank Rzepka
Saint Charles School
Saint Vincent de
Paul Church
Mr. & Mrs. Fred Salerno
Salin Bank & Trust
Company
Mrs. Marilyn Salom
Mr. & Mrs. Thomas Salzer
Ms. Vanessa Sanchez
Mrs. Liz Sanders
Mr. & Mrs. Lee Santiago
Mr. & Mrs. Paul Santos
Mrs. Carol Sappenfield
Mr. Charles Sarahan
Mr. & Mrs. Jon Sargent
Mr. & Mrs. Jared Sarrazine
Mr. & Mrs. Norbert
Sarrazine
Mr. John Satterfield
Mr. Jacob Sauer
Mr. Paul Sauersteig, Sr.
Mr. Jack Sauerwein
Mr. & Mrs. Tom Scare
Mr. & Mrs. Doug Schaefer
Mr. David Schafenacker
Ms. Doris Schafer
Mr. & Mrs. David Schaller
Mrs. Janet Schasker
Dr. & Mrs. Ronald
Scheeringa
Ms. Beverly Scheiderer
Mrs. Jean Schendel
Mr. & Mrs. George
Schenkel
Mr. & Mrs. Dale Scherman
Ms. Diane Schertz
Mr. & Mrs. Alphonse
Schueuer
Mr. & Mrs. Ken Schilf
Mr. & Mrs. Jimmy Schindler
Mr. & Mrs. John
Schlagenhauf
Schmucker Church
Mrs. Jeanne Schouweiler
Mr. Scot Schouweiler
Mrs. Nancy Schram
Mrs. Mary Ellen Schreck
Mr. & Mrs. Toby Schrock
Mr. & Mrs. Perry Schroeder
Mr. & Mrs. Tom Schuerman
Mr. Calvin Schultz
Mr. & Mrs. John
Schumacher
Mr. E. DeVon Schuman
Mrs. Renae Schwab
Mr. & Mrs. Denis Schwartz
Mrs. Amy Scott
Ms. Darcy Scott
Ms. Susan Seals
Ms. Joanne Seaman
Ms. Evelyn Seeger
Mr. & Mrs. Jeremy Senk
Senior Jaycees
Ms. Becky Seward
SGI, Inc.
Mrs. Sally Sgro
Mr. & Mrs. Steve Shade
Ms. Janet Shaffer
Mr. & Mrs. Paul Shaffer
Shambaugh & Son, Inc.
Mrs. Margaret Shane
Mr. & Mrs. Phillip Shank
Mr. & Mrs. Jeff Shatto
Mrs. Carol Shedd
Mr. & Mrs. Jerry Shenfeld
Mrs. Nancy Shepler
Mr. & Mrs. Larry Sherer
Mr. & Mrs. James Shields
Mr. & Mrs. Mike Shields
Mr. & Mrs. Timothy Shields
Mr. Mike Shifflett
Mrs. Cynthia Shipley
Shoaff Park Lions Club
Mr. Terry Shockey
Mrs. Nancy Shoda
Mr. & Mrs. Steven Shoda
Mr. & Mrs. Frank Shoener
Mr. Howard Shook
Ms. Dianne Shorter
Mr. Mike Shroyer
Mr. & Mrs. Robert Shugert
Mr. Dennis Shuler
Mr. & Mrs. Jay Shumaker
Mrs. Bonnie Shurboff
Dr. & Mrs. Richard Sibley
Ms. Cheryl Sicks
Mr. & Mrs. John Side
Mrs. Carli Sidoti
Mrs. Carolyn Siebert
Mrs. Bee Siegel
Mr. Nai Sike
Ms. Kathleen Silliman
Mr. & Mrs. Joseph Siman
Mr. & Mrs. Al Simerman
Mrs. Sharon Simmons
Mr. & Mrs. Ryan Singer
Mr. & Mrs. Carl Sipe
Mr. & Mrs. Tom Skiba
Ms. Margaret Slack
Mr. Steve Smethers
Ms. Charlotte Smith
Mr. & Mrs. David Smith
Mr. & Mrs. Donald Smith
Ms. Kay Smith
Ms. Loretta Smith
Ms. Mary Sue Smith
Mr. & Mrs. Rex Smith
Miss Ruth Smith
Mr. Stuart Smith
Dr. & Mrs. Thomas Smith
Mr. Vin Smith
Mr. Chris Snider
Mr. & Mrs. John Snider
Mr. & Mrs. Edward Snyder
Mr. & Mrs. Lowell Snyder
Mrs. Susan Sobek
Mr. & Mrs. George Sollner
Mr. & Mrs. James Solon
Mrs. Sarah Sommermeyer
Sordelet Telemarketing
Mr. & Mrs. Jerry Sorg
Mrs. Allison Sorgen
Somerville Charitable Trust
Mr. & Mrs. Christopher
Sosebee
Mr. & Mrs. Steven Souers
Mr. Casey Sowers
Mr. & Mrs. Rick Sowers
Mr. Scott Sowers
Mr. & Mrs. Steven Sowers
Ms. Annette Spade
Mr. & Mrs. Dick Spake
Mr. & Mrs. N. Daniel
Spangler
Mrs. Karen Spangler-
Berfield
Ms. Deb Spanos
Ms. Dara Sparling
Mr. & Mrs. Mark Spears
Ms. Maggie Spencer
Mrs. Gloria Spieth
Mr. Bret Spinks
Ms. Janice Spittler
Mrs. Sara Spittler
Mrs. Sherrie Sponseller
Ms. Julie Spradling
Mr. Jason Sprunger
Ms. Susan Sprunger
SRT Prosthetics Orthotics
St. Joseph Community
Health Foundation
Dr. & Mrs. Tom Stafford
Mr. & Mrs. Dan Staley
Ms. Tamela Stark
Mr. Darryl Starr
Mrs. Laura Starr
Stars Chimney Service, Inc.
State Farm Insurance
Ms. Roberta Steck
Mr. & Mrs. Don Stedje
Steel Dynamics, Inc.
Rev. Paul Steele
Ms. Susan Steele
Dr. Joe Steensma
Mrs. Lois Steere
Mrs. Martha Stefanek
Dr. & Mrs. David Stein
Mr. & Mrs. Steve
Steinbacher
Mr. & Mrs. Donald
Steininger
Ms. Jeanette Sterling
Mr. & Mrs. Steven
Sternberger
Mr. & Mrs. Rick Stevens
Mrs. Rosalina Stier
Mr. Bob Stouffer
Ms. Melissa Stout
Mr. Everette Stoutner
Mr. James Strebig
Mr. & Mrs. Stephen Stringer
Mrs. Darlene Stucky
Dr. & Mrs. Mitchell Stucky
Mr. Don Stump
Mr. & Mrs. John Stump
Mr. Ed Stumpf
Mrs. Carolyn Stumph
Mr. Barry Sturges
Mr. Brad Sturges
Mr. & Mrs. Jeff Sturges
Ms. Margaret Sturm
Subway Operations, Inc.
Subway Systems, Inc.
Ms. Anne Sullivan
Mr. Jeremiah Sullivan
Mrs. Margaret Sullivan
Mr. & Mrs. Michael
Summers
Summit Mechanical
Summit Power Systems
Superior Essex
Superior Van & Mobility
Mr. & Mrs. Chuck Surack
Mr. Benjamin Sutherland
Mr. & Mrs. Rudy Svoboda
Ms. Patricia Swartz
Ms. Lisa Sweet
Ms. Rosemary Sweet
Sweetwater Sound
Mr. & Mrs. William Swift
Mrs. Terri Swim
Dr. Jane Swiss
Swiss Re Life & Health
America, Inc.
Mrs. Jan Swygart
Mr. & Mrs. Michael
Syndram
Mrs. Pat Syndram
Mr. & Mrs. Percy Talati
Mr. & Mrs. Ryland Taliaferro
Mr. D. Jeff Tappy
Mr. & Mrs. Colin Taylor
Mr. R. Gordon Taylor
Taylor Chapel United
Methodist Church
Ms. Evelyn Teel
Mr. & Mrs. Jeff Teeple
Mr. & Mrs. Tim Terman
Mrs. Janelle Ternet
Mr. & Mrs. Darrell Terry
Ms. Theresa Tescula
Mr. & Mrs. Gary Thelen
Ms. Debbie Thomas
Mr. & Mrs. Hal Thomas
Mr. & Mrs. James
Thompson
Mr. Jared Thompson
Mrs. Martha Thompson
Ms. Arlene Thorn
Mr. & Mrs. Ishmel
Thornsbury
Ms. Sarah Thrall
Dr. Richard Tielker
Mr. & Mrs. Drew Tindall
Mrs. Martina Tippmann
Mr. & Mrs. Patrick
Tippmann
Mr. & Mrs. Steve Tippmann
Charlie Tippmann
Foundation



Mary Cross Tippmann Foundation
 Ms. Camellia Tobin
 Ms. Susan Todesco
 F.W. Toenges & Sons, Inc.
 Tokheim Athletic Assoc.
 Mr. Kirk Tolliver
 Mr. & Mrs. Rick Tomkinson
 Tomkinson Dodge Inc.
 Mr. John Toth
 Dr. Amy Totten
 Mrs. Sandra Totten
 Ms. Leah Tourkow
 Tower Bank
 Mrs. Theresa Trauner
 Mr. & Mrs. Bob Treber
 Tredway Pools Plus
 Mr. & Mrs. Thomas Trent
 Mrs. Jennifer Trent - Shirey
 Ms. Rebecca Trimbur
 Trinity Episcopal Church
 Mr. Kent Turnbow
 Mr. & Mrs. Max Turnbow
 Mr. Jeff Turner
 Mr. & Mrs. Steven Turner
 Mr. & Mrs. Craig Tyler
 Dr. & Mrs. Phillip Tyndall
 U.S. Department of Education
 Mr. & Mrs. Ronald Ulaszewski
 United Faith Presbyterian Church
 United States Olympic Committee
 United States Tennis Association
 United Steel Workers Union
 Mrs. Kelly Uptdike
 Ms. Megan Uptdike
 Upland Brewing Company
 Mr. & Mrs. Russell Uptgraft
 Ms. April Urban
 Ms. Frances Urban
 Ms. Melissa Urban
 Mr. & Mrs. Michael Urban
 USTA Midwest
 Mr. Nate Utesch
 Mary E. Van Drew
 Charitable Foundation
 Mr. Robert Van Horn

Mrs. Sandra Vance
 Mrs. Teresa Vanderpool
 Ms. Edey Vanhouten
 Mr. & Mrs. Ray Vaughn
 Mrs. Mary Vendrely
 Vera Bradley Designs, Inc.
 VFW Post 857
 Ladies Auxiliary
 Ms. Mary Alice Vigneault
 Mr. Jeff Violasgh
 Ms. Anna Voelker
 Mr. & Mrs. Gene Voelker
 Mr. Steven Vollich
 Vomatic Truck
 Mrs. Barbara Vonderhaar
 Votaw Electric
 Mr. & Mrs. Bill Vrabel
 Ms. Theresa Wagler
 Mr. & Mrs. Robert Wagner
 Wagner-Meinert, LLC
 Mr. & Mrs. Peter Wahl
 Ms. Laura Walda
 Mrs. Emily Walden
 Mr. Kaleb Walker
 Mr. & Mrs. Steve Walker
 Mrs. Theresa Walker
 Walmart Foundation
 Mr. Rod Walter
 Ms. Judith Wannemacher
 Ms. Rebecca Ward
 Mr. & Mrs. Mark Warsco
 Waterfield Foundation
 Ms. Althea Watson
 Mr. & Mrs. Frederick Watson
 Mr. Richard Watson
 Mr. & Mrs. Dick Weaver
 Weaver Popcorn Foundation, Inc.
 Mr. & Mrs. Jerry Webber
 Mr. Richard Weber
 Mrs. Marilyn Wedler
 Mr. & Mrs. Greg Wehling
 Mr. Jon Wehrle
 Mr. & Mrs. Dean L. Weibaker
 Mrs. Becky Weimerskirch
 Mr. & Mrs. Arthur Weingartner
 Ms. & Mr. Christine Weirauch

Mr. & Mrs. Doug Welch
 Mr. & Dr. Mark Welker
 Wells Fargo Advisors
 Wells Fargo
 Discretionary Funds
 Mr. & Mrs. John Wendling
 Ms. Rosalie Werling
 Mr. & Mrs. Tom West
 Mr. Gerald Westerfield
 Westwood Lanes
 Mr. & Mrs. Muri Wheeler
 Mr. & Mrs. Richard Whipp
 Mr. Gregory White
 Ms. Ruth White
 Miss Sandra White
 Mrs. Dian Whiteleather
 Ms. Judy Whiteleather
 Ms. Marissa Whitesell
 Mr. & Mrs. Bob Whittaker
 Mr. Brad Whittaker
 Mrs. Christa Wiese
 Mr. & Mrs. Olin Wiland
 Wildman Facility Services
 Mrs. Carol Wilhelm
 Mr. & Mrs. John Wilhelm
 Ms. Wilma Wilhelm
 Dr. & Mrs. Robert Wilkins
 Ms. Debra Williams
 Mr. James Williams
 Mr. & Mrs. Norman Williams
 Mr. Roger Williams
 Ms. Victoria Williams
 Mrs. Karen Willman
 Mrs. Ronnie Willwerth
 Mr. & Mrs. John Wilmer
 Mr. & Mrs. Dave Wilson
 Ms. Melanie Wilson
 Mr. & Mrs. Paul Wilson
 Mr. & Mrs. James Winebrenner
 Mrs. Kathryn Wirth
 Ms. Mary Ann Wissman
 Mr. & Mrs. Jerry Witte
 Mr. Brian Witwer
 Mr. Kyle Witwer
 Mr. & Mrs. James Wizenman
 Mrs. Jennifer Witzigreuter
 Mrs. Kim Woenker
 Mr. & Mrs. Jeff Wolf
 Mr. W. Paul Wolf

Ms. Judith Wolfe
 Mrs. Denise Wood
 Mr. Michael Woodman
 Mr. & Mrs. Patrick Woodman
 Ms. Lea Woodrum
 Mrs. Abby Wooldridge
 Mrs. Nancy Worley
 Mrs. Mary Worrell
 Mrs. Erin Wright
 Mr. & Mrs. John Wright
 Mr. & Mrs. William Wyatt
 Wysni Corp
 Ms. Sandra Wysong
 Mrs. Beverly Wyss
 Ms. Linda Wyss
 Mr. Phil Wyss
 Dr. Steve Yager
 Mrs. Maxine Yater
 Mr. Claude Yates
 Mr. Al Yoder
 Mr. & Mrs. Michael Yoder
 Mr. & Mrs. Kent York
 Mr. John Yorko
 Dr. Daryl Yost
 Mr. Bob Zahn
 Mr. Brock Zehr
 Mr. & Mrs. John Zeimet
 Mr. & Mrs. Ron Zeitlow
 Mr. & Mrs. Alan Zirkle
 Mrs. Constance Zollars
 Mr. & Mrs. Harold Zook
 Mrs. Beverly Zuber
 Mrs. Courtney Zuehsow
 Mr. William Zuhone
 Ms. Ann Zurcher
 Mr. & Mrs. Mike Zurcher

IN-KIND DONOR LISTING

July 1, 2011 to June 30, 2012

Aboite Animal Clinic
 Aboite Animal Hospital LTD
 Aboite Eye Care
 Advanced Auto Parts
 AEP Print Services
 American Girl
 American Health & Fitness Center
 American Legion Post 148
 Mrs. Shirley Anderson
 Applesseed Quilter's Guild
 Aptera
 Arlington Park Association, Inc.
 Armstrong Flowers
 Ms. Michelle Arnold
 Mr. & Mrs. Daniel Arnold
 Miss Erin Arnold
 Arrow Fence Co., Inc.
 ATG Rehab
 Audio Video Lifestyles, Inc.
 Auto Zone
 Autumn Ridge Golf Club
 AWS
 Mrs. Kathy Baer
 Bagel Station

Mr. & Mrs. Timothy Bannigan
 Barbara's New Beginnings
 Ms. Mary Barnes
 Barney's Auto Electric
 Mrs. Mary Baron
 Mr. & Mrs. Jim Barrand
 Mr. Mike Barrand
 Barrett & McNagly
 Jo Belans
 Belle Sante
 Mr. & Mrs. Mark Berron
 Best Boy & Co.
 Mr. & Mrs. Norm Biberstine
 Bob Evans
 Bobick's Golf Inc.
 Mrs. Margaret Bock
 Mr. & Mrs. Keith Bohnke
 Bradley Gough Diamonds
 Ms. Julie Braun
 Ms. Carol Brown
 Mrs. Evelyn Brunnegraff
 Ms. Linda Bryie
 Ms. Betty Bubb

Budget Blinds of Fort Wayne
 Buffalo Wings & Ribs
 Build - A - Bear Workshop
 Mr. & Mrs. Mike Burchardt
 Mr. & Mrs. Tom Burchardt
 Ms. Diann Burd
 Mr. & Mrs. David Burns
 Mr. Bob Burnsworth
 Mr. Duane Buuck
 Ms. Maricille Buuck
 Canterbury Green Golf Course
 Canterbury Hotel
 Canterbury Lower School
 Mrs. Brandon Capps
 Mr. & Mrs. Kris Carroll
 Casa D'Angelo
 Mr. & Mrs. Mark Cass
 Catablu Grille
 CBRE / Sturges
 Ms. Carrie Chapman
 Cheer Baskets, Inc.
 Mrs. Cindy Chenoweth
 Cherry Hill Golf Club
 Chestnut Hills Golf Club

CHOPS
 Christopher James Menswear
 Cinema Center
 Club Soda
 Mr. & Mrs. Robert Coil
 Ms. Judith Coleman
 Comfort Suites
 Mr. Ron Comito
 Coney Island
 Ms. April Connelley
 Conner Prairie
 Cosmo's
 Country Heritage Winery & Vineyard
 Country Kitchen
 Mrs. Kristen Cox
 Coyote Creek Golf Club
 Cracker Barrel
 Crazy Pinz
 Mr. & Mrs. Bob Crosby
 Mr. & Mrs. Brian Crowl
 Ms. Laura Custis
 Custom Golf of New Haven
 D & B Sales
 Mr. & Mrs. Mike Dager

- Mr. Todd Davis
 Ms. Patricia Davis
 Mr. Ray DeBolt
 Mr. & Mrs. David DeMarchis
 Despos Tailoring
 Dimension Ford
 Diskey Architectural
 Signage
 Ms. Sara Diss
 Connelly's Do it Best
 Mr. & Mrs. Lawrence
 Dodane
 Mr. Andrew Dodzik
 Rev. & Mrs. Paul
 Doehrmann
 Mr. Joe Doust
 Mr. & Mrs. George Eckrich
 Mr. & Mrs. James Eckrich
 Eddie Merlot's
 Mr. & Mrs. Ross Ehle
 El Azteca
 Mrs. Alleda Elam
 Embassy Theatre
 Mrs. Shirley Eng-Ku
 Erika's Spa & Wellness Club
 Ethan Allen
 Ms. Mary Etheridge
 Ms. Debra Eversole
 Exit Staged Right, LLC
 Extinguisher Co. No. 1
 Mr. Charles Felger
 Ms. Diane Finch
 Mr. & Mrs. Mike Findley
 Findley Financial Corp.
 Mrs. Ida Finkelshteyn
 Firestone
 Mr. Bernd Fischer
 Mr. Larry Fisher
 Five Star Distributing Co.
 Foellinger-Freimann
 Botanical Cons
 Fort Wayne Children's Zoo
 Fort Wayne Country Club
 Fort Wayne Comet Hockey
 Fort Wayne Museum of Art
 Fort Wayne Outfitters
 & Bike Depot
 Fort Wayne Parks
 & Recreation
 Fort Wayne Pediatrics, P.C.
 Fort Wayne Philharmonic
 Fort Wayne Police
 Department
 Fort Wayne TinCaps
 Mr. & Mrs. Richard Fox
 Fox & Fox
 Frank Family Vineyards
 Mrs. Denise Fredrick
 Friendly Fox
 Genereux
 Mr. Robert Gibson
 Gingham's Night Out
 Mr. & Mrs. Dennis Girardot
 Glenbrook Dodge
 Chrysler Jeep
 Glendarin Hills Golf Club
 Gordon Food Service
 Gouty's Service Center
 Mrs. Kathy Graney
 Granite City Brewery
 Mr. & Mrs. Jeff Graves
 Great Clips
 Mr. & Mrs. John Grose
 Ms. Katy Grosh
 Mrs. Deborah Guebard
 H & W Auto Parts NAPA
 Habegger Furniture Inc.
 Habitat
 Hair Affair
 Hall's Restaurants
 Mr. Steve Hammond
 Hampton Inn
 Happy Trails
 Ms. Sara Harris
 Mr. Robert Haun
 Mr. & Mrs. Gil Haynie
 Health Food Shoppe
 Heartstrings
 Mr. & Mrs. Dan
 Heingartner
- Mr. & Mrs. Vincent Heiny
 Hemmings Motor News
 Mr. & Mrs. David Hendry
 Ms. Jenette Henry
 Ms. Kara Hewitt
 Mrs. Harriet Highland
 Hilton Garden Inn
 Hires Automotive Center
 Mr. Mark Hoff
 Holiday World &
 'Splashin' Safari
 The Home Depot
 Foundation
 Honey on the Table
 Hoosier Park Racing
 and Casino
 Mrs. Deb Hoover
 Ms. Joan Huber
 Ms. Connie Hubert
 Pat Hudson
 Mr. & Mrs. David Hughes
 Hyatt Place
 I-69 Trailer Center
 Indianapolis Colts
 Mr. & Mrs. Blane Irving
 J C Automotive
 James Medical
 Mr. Jay Jamison
 Mr. Bill Jeffords
 JEGS
 Jiffy Lube
 Ms. Helen Johnson
 Lynn Johnston
 Kapp's Lawn Specialists
 Keepsake Threads
 Mr. & Mrs. David Kelley
 Mr. Bob Kiefer
 Mr. & Mrs. Gary Kimpel
 Mr. & Mrs. Allen King
 Kings Island
 Ms. Nancy Knight
 Mr. Eric Knipscheer
 Kyrrou Tailoring
 Mr. & Mrs. Jim Labas
 Lakeside Golf Course
 Mr. & Mrs. Greg Lambert
 Ms. Norma Langmeyer
 Mr. & Mrs. Don Lanham
 Lavish Photography
 Lawrence Building Corp.
 League for the
 Blind & Disabled
 Lee's Famous
 Recipe Chicken
 Mr. & Mrs. Kevin Leininger
 Mr. & Mrs. Paul Lemert
 Mr. Mark Lester
 Ms. Sharon Light
 Lincoln Financial Group
 Little Luxuries of
 Mackinac Island
 Mr. & Mrs. Arthur Litton
 Loaf and Ladle
 Mrs. Nancy Louraine
 Mr. & Mrs. Dennis Love
 Ms. Michelle Love
 Lulu's at Homeport Marina
 Lutheran Health
 Network - Dupont
 Ms. Alisha Lyons
 Mackinac Island
 Carriage Tours
 Madeleine's Bakehouse
 Mr. & Mrs. James Mallers
 Marathon
 Mr. & Mrs. Daniel Martin
 Ms. Sue Mau
 Mr. & Mrs. Rick
 McCampbell
 Mr. & Mrs. Doug McKibben
 Mrs. Barb McKinnon
 Ms. Renae Meredith
 Mr. Fred Merritt
 Merry Maids
 Mr. & Mrs. Neal Moehnke
 Mr. & Mrs. Rory Moehnke
 Mr. & Mrs. Max Moore
 Morgan Commercial
 Lettering
 Mr. & Mrs. Garry Morr
- National Oil and Gas
 Mr. & Mrs. Lee Neher
 Miss Jennifer Neher
 New Haven Women
 of the Moose
 Mr. John Newbauer
 Mrs. Helen Nichols
 The Nichols Company
 Mr. & Mrs. Bernard Niezer
 Ms. Suzanne Noblett
 Mr. & Mrs. Ray Ohlman
 One Lucky Guitar
 Mrs. Mary Ann O'Neil
 Mr. & Mrs. Dan O'Neill
 Mr. Bob O'Reilly
 O'Reilly's Auto Parts
 Mr. & Mrs. Kurt Ostrow
 Mr. & Mrs. Randy Outman
 Overman Telephone
 Services, Inc.
 Paint the Town
 Graphics, Inc.
 Pak Mail
 Ms. Susan Pallota
 Mrs. Susan Pape
 Pappas Furs
 Ms. Carmalita Parker
 Parkview Health & Fitness
 Peg Perego
 Pepsi Beverages Company
 Peter Franklin Jewelers
 Mr. & Mrs. Fredus
 'Pete' Peters
 Mr. & Mrs. Jeffrey Peterson
 Phil's Hobby Shop
 Physicians Health Plan
 Ms. Angela Picillo
 Pine Valley Country Club
 Pio Market
 Pizza Hut of
 Fort Wayne, Inc.
 Mrs. Wendy Prince
 Mrs. Marlene Proch
 Putt Putt Golf & Games
 Quaker Steak and Lube
 Rack & Helen's Bar
 Ms. Anita Reece
 Ms. Patricia Rencher
 Rescare
 Dr. & Mrs. Joseph
 Richardson
 Riegel's
 Riverside Manufacturing
 Ms. Carol Rolland
 Roller Dome Skate Center
 Mrs. Cindi Rolleston
 Mr. Doug Rood
 Mr. & Mrs. Matt Rosbrugh
 S & S Sport Spot
 S & V Liquors
 Mrs. Marilyn Salon
 Scal Graphics
 Mr. & Mrs. Rick Schaefer
 Mr. & Mrs. Dean
 Scheumann
 Ms. Darlene Schumacher
 Ms. Deb Schumacher
 Mr. & Mrs. John
 Schumacher
 Shambaugh & Son, Inc.
 Ms. Alice Shannon
 Mr. Fred Sheets
 Shepler's Mackinac
 Island Ferry
 Ms. Jennifer Showalter
 Mr. & Mrs. John Side
 Ms. Jo Ann Siffleet
 Signs Now
 Mr. & Mrs. Tom Skiba
 Ms. Heather Smith
 Mr. & Mrs. Don Smith
 Mrs. Susan Sockrider
 Southern Wine &
 Spirits of Indiana
 Mr. & Mrs. Rick Sowers
 Mr. & Mrs. N. Daniel
 Spangler
 Spangler Landscape
 Services
 Spiece Fitness & Day Spa
- Mr. T.L. Springmann
 SRT Prosthetics Orthotics
 STAR Financial Bank
 Starbucks
 Mr. & Mrs. Don Stedje
 Rev. Paul Steele
 Ms. Melissa Stout
 Mr. & Mrs. Andy Strebig
 Mr. & Mrs. Steve Stronczek
 Dr. & Mrs. Mitchell Stucky
 Mr. Bryan Stuff
 Mr. & Mrs. Jeff Sturges
 Ms. Madelyn Sturgus
 Subway Systems, Inc.
 Dr. Robert Sullivan
 Sun King Ice Company
 Superior Van & Mobility
 Sweet Cars
 Dr. Jane Swiss
 Sycamore Hills Golf Club
 Ms. Diane Sylvester
 Mr. & Mrs. Ryland Taliaferro
 Technology Specialists
 Texas Roadhouse
 The Duce
 The Home Health
 Network, Inc.
 The Lantern
 The Olive Twist
 The Perfect Pear
 The Pink Poodle
 The Plex South
 The Venice
 The Vitamin Shoppe
 Ms. Teresa Tilbury
 Mr. & Mrs. Rick Tomkinson
 Mr. & Mrs. Jerome Tourney
 Tredway Pools Plus
 Mr. Kevin Trent
 Mr. & Mrs. Thomas Trent
 Mrs. Garthena Tucker
 Ultrazone - Laser Tag
 University of Saint Francis
 Upland Brewing Company
 UPS Freight
 Mrs. Patricia
 Veazey-Beaman
 Vera Bradley Designs, Inc.
 Visit Fort Wayne
 Vital Living
 Therapeutic Massage
 Ms. Theresa Wagler
 Ms. Heidi Wagner
 Walmart
 Ms. Geiosha Walson
 Walt Disney World Co.
 Mr. Luke Waters
 Mr. & Mrs. Arthur
 Weingartner
 Ms. Marilyn Welch
 Mr. & Mrs. John Wendling
 Mr. & Mrs. Jerome Wetter
 Whispering Creek
 Golf Club
 Ms. Debra Williams
 Willow Ridge Golf Club
 Ms. Karen Winebrenner
 Mrs. Diane Winkeljohn
 Mr. & Mrs. Jerry Witte
 WLDE 101.7 FM
 Wolf Corp.
 Dr. Daryl Yost
 Yo-Yo (Yogurt on
 Your Own)



OUR WISH LIST

Laundry detergent	Cotton balls	Stickers
Dishwasher detergent	Coffee (regular & decaf)	Glue sticks
Dishwashing liquid	Non-dairy coffee	Duct & masking tape
Divided foam plates	creamer	Facial tissue
8-oz. & 12-oz. Foam cups	Plastic spoons	Shaving cream
Paper towels	and forks	Stopwatch/digital timer
Boys and girls	Flexible straws	Bubbles
underwear	Aluminum foil	Snack packs (cookies,
(sizes 3T to 10)	Large rectangular	crackers, pudding
Disposable wipes	vinyl tablecloths	& applesauce)
Disinfectant wipes	Play-Doh	Hand sanitizer
Glass cleaner	Construction paper	
Ziploc-style bags	Washable markers	
(all sizes)	Black dry-erase markers	

Turnstone Center for
Children and Adults with Disabilities
3320 North Clinton Street
Fort Wayne, Indiana 46805
(260) 483-2100



Nonprofit
Organization
U.S. Postage
PAID
Fort Wayne, Indiana
Permit No. 260

FORT4FITNESS

This year, Turnstone was a proud Charity Partner during the Fort4Fitness. Thank you to the race organizers and to the more than 130 people who joined our team! Also a big thank you to our team sponsors: Superior Van & Mobility and Findley Financial. This year, Team Turnstone raised more than \$17,000 in support of Turnstone's mission to empower people with disabilities. Go Team!



10K athletes Nina Welfle, Jenette Henry, and Molly Welfle.

DATES TO REMEMBER

**BOB CHASE FROSTBITE CLASSIC
AND INTERNATIONAL
SILVER STICK CHAMPIONSHIP**

:

CASINO NIGHT!
Saturday, March 9, 2013.

Saturday and Sunday,
February 9 and 10, 2013.



▶ Scan our QR code to visit the Turnstone website.