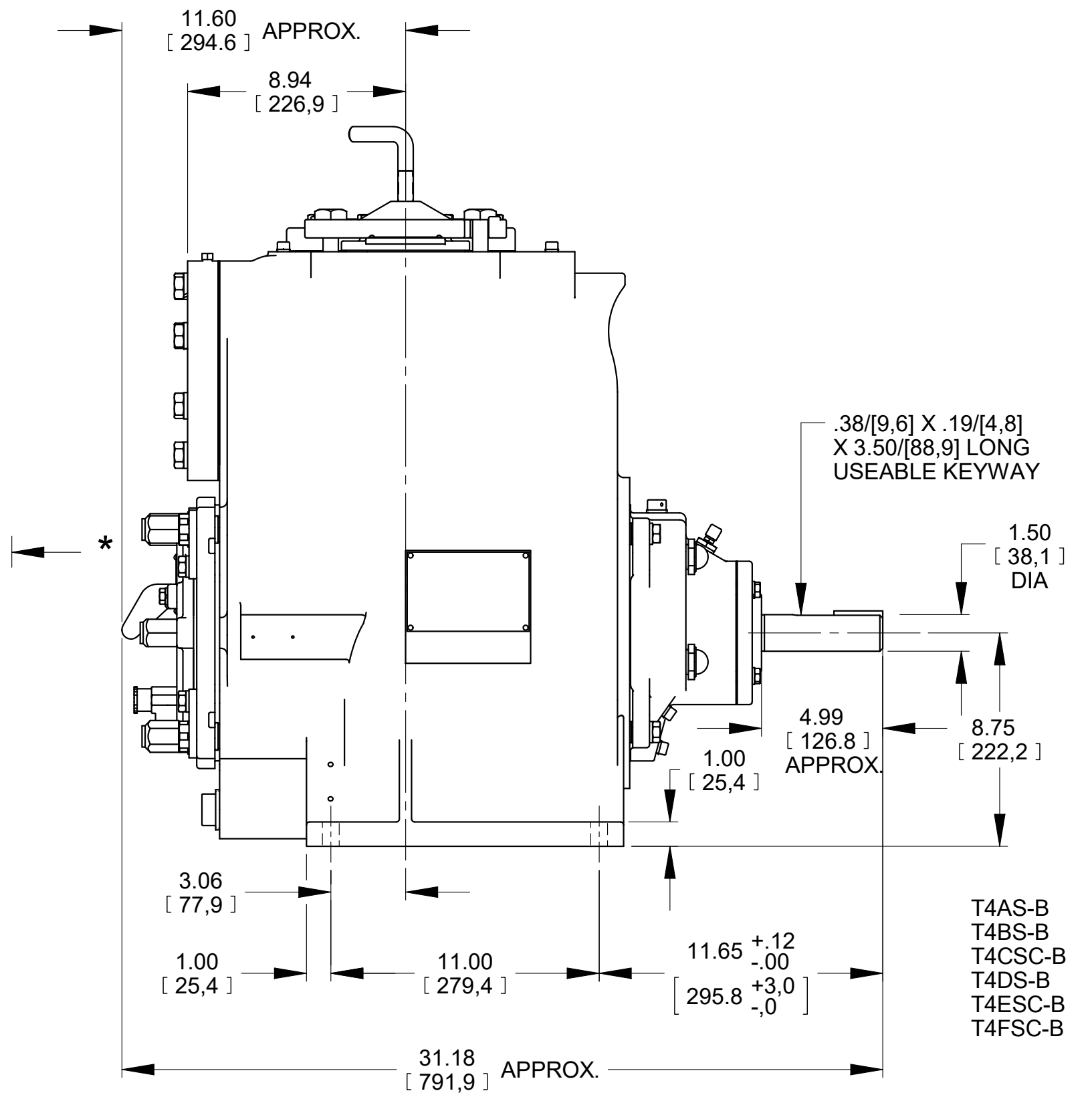
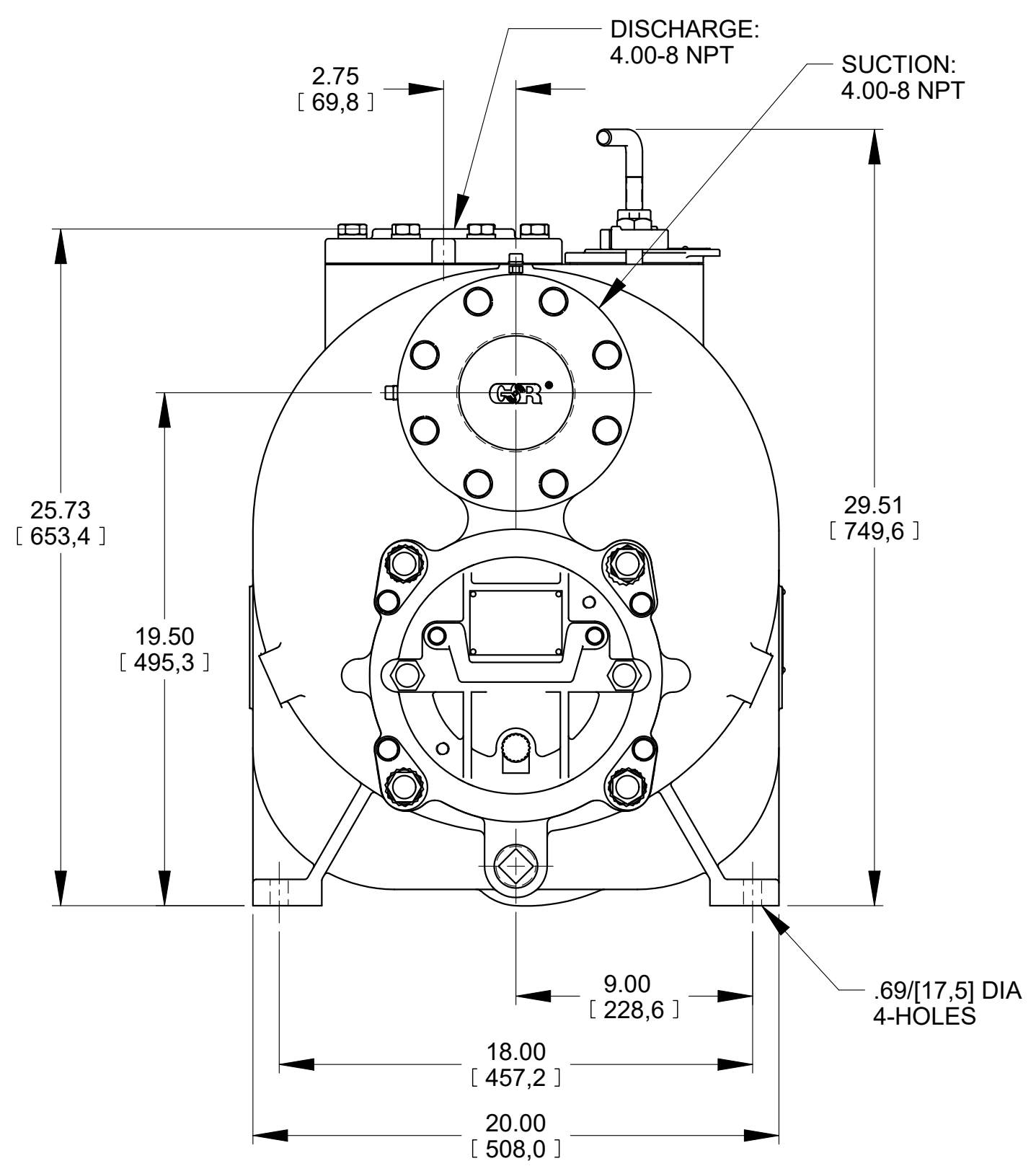


\* 18.00/[457,2] RECOMMENDED FOR REMOVAL OF BACK COVER PLATE  
 T4AS-B / T4CSC-B / T4FSC-B - 10.00/[254,0] REQUIRED FOR REMOVAL OF BACK COVER PLATE  
 T4BS-B / T4DS-B / T4ESC-B - 11.50/[292,1] REQUIRED FOR REMOVAL OF BACK COVER PLATE



DIMENSIONS:  
 INCHES  
 [MILLIMETERS]

20-040

	<b>THE GORMAN-RUPP CO.</b> MANSFIELD, OHIO ST. THOMAS, ONTARIO		DRAWN BY JPJ	SCALE 3/16	MODEL NOTED
	DATE 10-14-14	REVISED 08/03/20	OUTLINE NUMBER 19017		