



PUMPS FOR MINING

The right pump for your above- & below-ground mining applications.

GR[®]
GORMAN-RUPP
PUMPS

The Pump People[®]



APPLICATIONS:

- Quarry Dewatering
- Sludge Transfer
- Transfer of Mineral Tailings
- Slurry Transfer
- Dewatering Gassy Mines and Tunnels
- Pumping Corrosives and Abrasives
- Clean Water Transfer
- Wash Operations
- Strip Mine Dewatering
- Conveyor Spillage Sump
- Water Reclamation
- Dust Control

THE RIGHT PUMP FOR EVERY MINING APPLICATION

Whether it's a copper mine in Montana, a coal mine in Kentucky or a gold mine in Alaska, you'll find Gorman-Rupp pumps working reliably day after day, week after week, and year after year, to keep mine operations running smoothly—guaranteed.

Self-Priming Centrifugal Pumps

Gorman-Rupp has been helping miners move sludges and dirty water for decades. Our self-priming trash pumps are designed for handling solids up to 3" in diameter.

Gorman-Rupp self-priming pumps are easy to install and service because they're mounted high and dry above the liquid being pumped. Most are available in special metal construction for corrosive/abrasive applications.

Super T Series® models feature a removable coverplate which allows easy access to the pump interior without disconnecting pipe or hoses. If a clog does occur, it can be accessed through the patented lightweight inspection cover, removed quickly and the pump returned to service in minutes.



Super T Series®

Priming-Assisted Pumps

Gorman-Rupp's PA Series® and PAH Series® pumps are designed and engineered for the most rugged and demanding applications. The positive priming of the Prime Aire is well suited for applications involving long suction lines, intermittent flows or large volumes of air in the liquid being pumped.

These pumps feature a solids-handling impeller, an abrasive handling seal and a standard auto-start control which starts and stops the pump in response to the amount of liquid present.

Priming options are available. These eliminate the leaks traditionally associated with vacuum-assisted pumps. This not only reduces environmental concerns, but also allows the pumps to operate under flooded suction conditions without leaking. Many priming-assisted pumps are available in a variety of materials for abrasive and corrosive liquids.



PA Series®



The diaphragm primer offers reliability and increased efficiency, as well as higher lifts for select Prime Aire® pump models.

Submersible Pumps

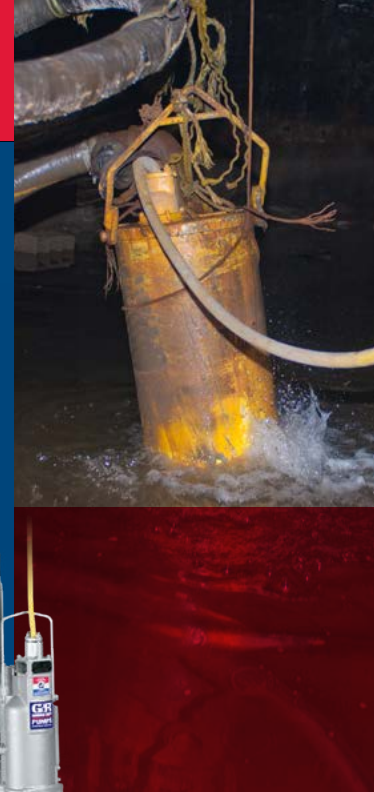
Gorman-Rupp electric motor-driven and hydraulic powered submersible pumps rank among the most efficient and dependable in the mining industry.

We offer a full line of submersible pumps, including slimline, widebase and SF Series® solids-handling models. Submersibles are available in 2" to 12" sizes with capacities to 7,000 gpm and heads to 600'. Many models are available with stainless steel fitted parts or all-stainless construction for pumping in severely corrosive or abrasive applications, as well as in MSHA permissible locations. Most SF Series pump models are available with CSA C-US approval for standard locations and FM and CSA C-US approval for hazardous (Class I, Division 1, Groups C & D) environments.

Gorman-Rupp S Series submersible pumps are specifically engineered for efficient and economical dewatering. These pumps operate quietly under the surface, making them less prone to vandalism and weather than above-ground pumps.

Gorman-Rupp submersible pumps offer superior hydraulic design and deliver greater flow with less horsepower, reducing operating costs.

These pumps can be installed in series (in-line staging) to extend your overall pumping distance. This pump configuration effectively doubles the head at a given flow and eliminates the need for a variety of different pump sizes.



Standard Horizontal End Suction Centrifugal Pumps

Gorman-Rupp's 6500 Series® line of end suction centrifugal pumps is ideal for applications where a suction lift is not required. Their simple design allows for greater efficiencies in operation over self-priming alternatives in flooded suction installations.

These pumps are designed for clean liquids or

liquids containing large solids. Solids-handling models include an innovative side access inspection/clean-out port and offer higher heads and flows when required.



All Super T Series®, SF Series®, 6500 Series®, PA Series®, PAH Series® and Eradicator Plus™ pumps come standard with the following warranties:



Portable Utility Pumps

By-products of the mining process such as coal, copper, iron, silver, gold and other mineral tailings have to be moved. Gorman-Rupp offers hundreds of self-priming centrifugal, standard centrifugal and diaphragm pump models for handling everything from clear water to corrosive and abrasive solids. For such applications, many self-priming centrifugal pumps are available in materials including 316 stainless steel and CD4MCu.

10 Series®

For applications dealing with bags, rags, stringy solids or any other clog-prone materials, the Eradicator® Solids Management System is available for all sizes of Gorman-Rupp Super T Series®, Ultra V Series® and select Prime Aire®* pumps. For the most aggressive applications and more effective solids management, 3", 4" and 6" Super T Series models are available with Eradicator Plus™ technology for cutting and tearing organic solids before they are passed through the pump.

*Includes Eradicator® wearplate only.



SUPPORTED AND SERVICED THROUGHOUT THE WORLD.



★ **Manufacturing Facilities**
● **Distribution Centers**

Gorman-Rupp USA
Mansfield, Ohio, USA

Gorman-Rupp Canada
St. Thomas, Ontario, Canada

Gorman-Rupp Europe
Waardenburg, Netherlands
Namur, Belgium

Gorman-Rupp Africa
Cape Town, South Africa
Durban, South Africa
Johannesburg, South Africa (Headquarters)

Distribution Centers
Dubai, United Arab Emirates
Grand Prairie, Texas, USA

Gorman-Rupp has an experienced staff of engineers dedicated to the design and construction of the most serviceable pumps in the mining industry. Our representatives are trained to help you select the proper pumps and related equipment for your specific application. Contact the experts at Gorman-Rupp for suggestions on maintaining your equipment for maximum performance.



GORMAN-RUPP PUMPS
P.O. BOX 1217
MANSFIELD, OHIO 44901-1217 | USA
TEL: 419.755.1011 | FAX: 419.755.1251

GRPUMPS.COM



The Pump People®