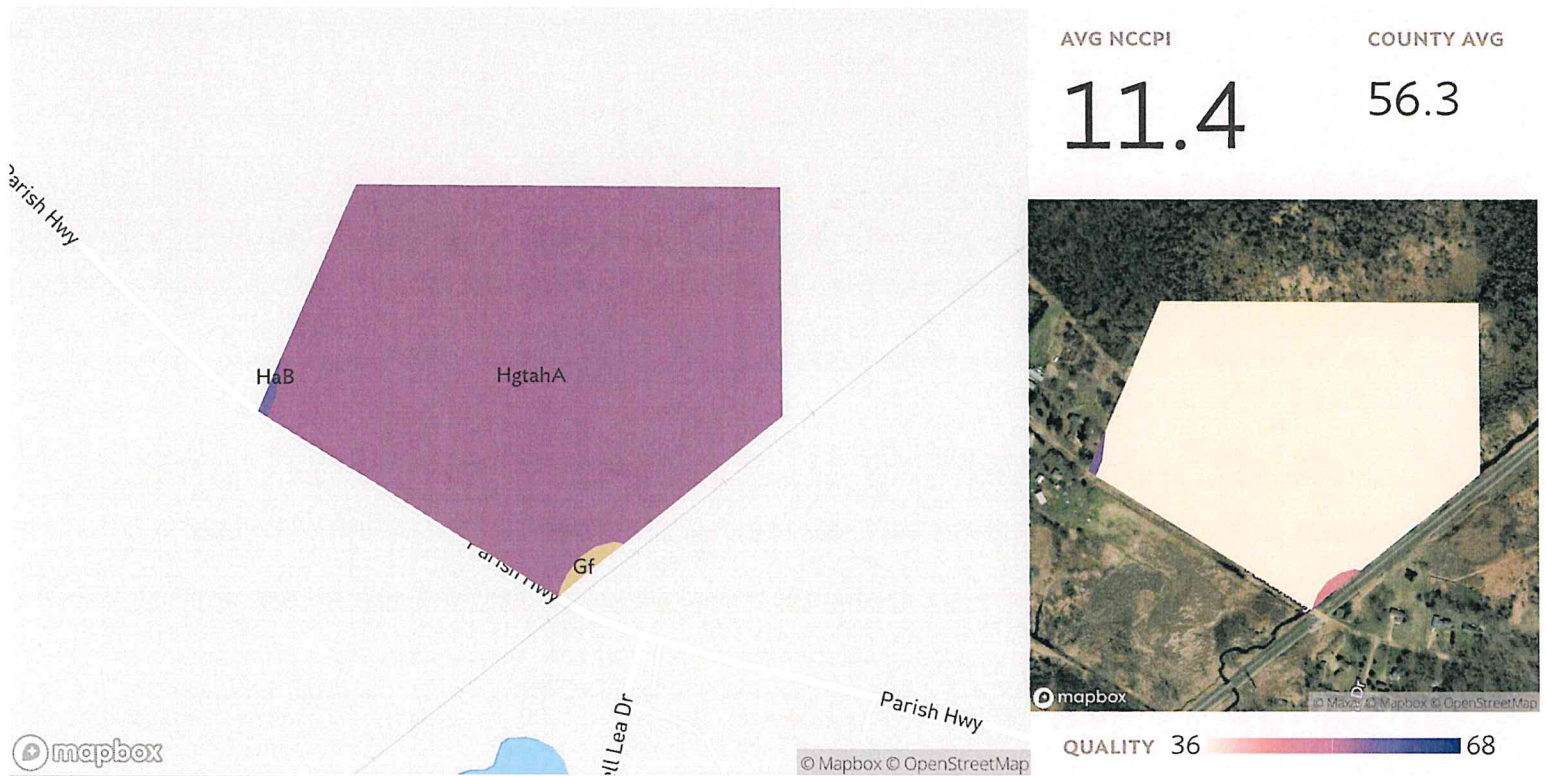


3 fields, 201 acres in Eaton County, MI



## Field 1

Source: NRCS Soil Survey

38 ac.

SOIL CODE	SOIL DESCRIPTION	ACRES	PERCENTAGE OF FIELD	SOIL CLASS	NCCPI
■ HgtahA	Houghton muck, 0 to 1 percent slopes	37.59	99.1%	5	11.0
■ Gf	Gilford sandy loam, 0 to 2 percent slopes, gravelly subsoil	0.23	0.6%	3	46.1
■ HaB	Hillsdale sandy loam, 0 to 6 percent slopes	0.11	0.3%	2	57.2
<b>37.94</b>					<b>11.4</b>

3 fields, 201 acres in Eaton County, MI












Field 1

38 ac.

Avg. Elevation

854.85 ft

	ELEVATION RANGE	ACRES	PERCENT AREA
	861.70 ft - 862.84 ft	0.04	0.11%
	860.56 ft - 861.70 ft	0.10	0.26%
	859.42 ft - 860.56 ft	0.52	1.37%
	858.28 ft - 859.42 ft	1.05	2.77%
	857.14 ft - 858.28 ft	1.98	5.21%
	856.00 ft - 857.14 ft	3.76	9.91%
	854.86 ft - 856.00 ft	5.29	13.94%
	853.72 ft - 854.86 ft	18.10	47.7%
	852.58 ft - 853.72 ft	7.10	18.72%