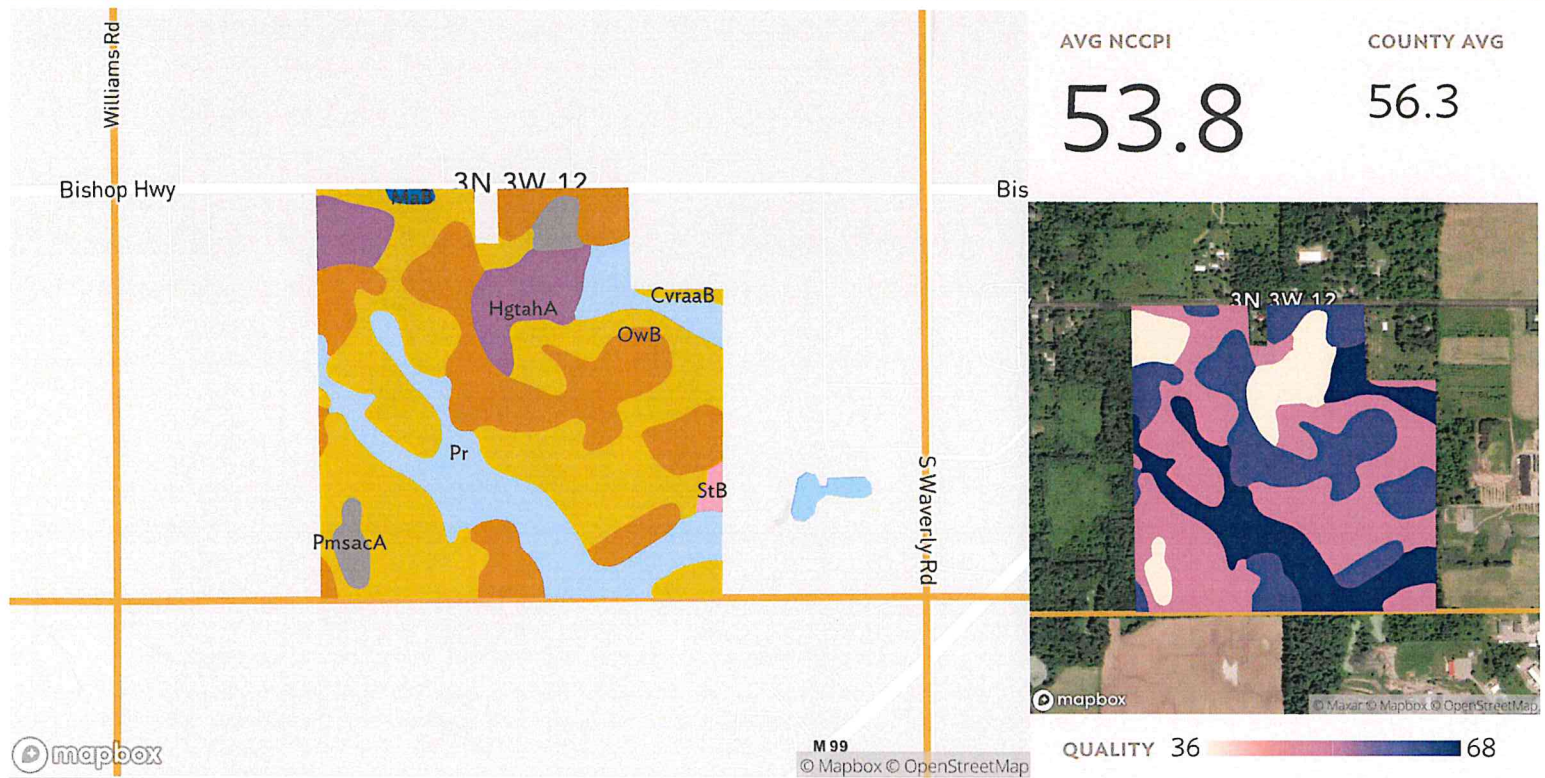


3 fields, 201 acres in Eaton County, MI



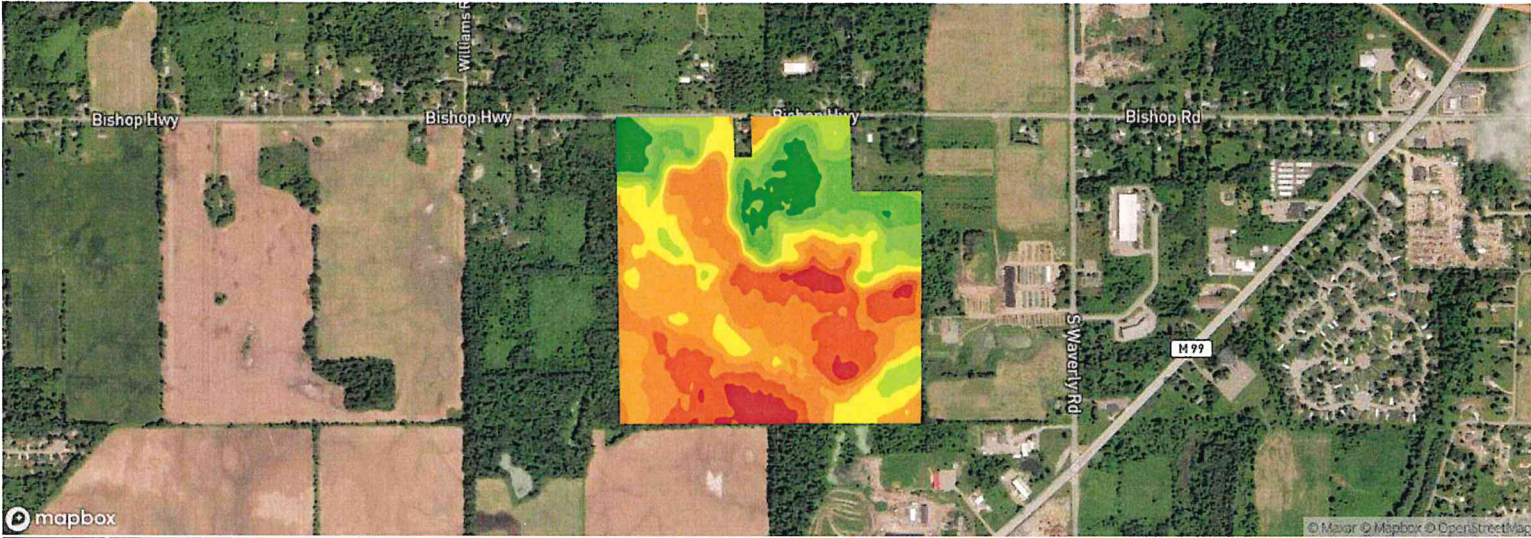
Field 3

Source: NRCS Soil Survey

150 ac.

SOIL CODE	SOIL DESCRIPTION	ACRES	PERCENTAGE OF FIELD	SOIL CLASS	NCCPI
CvraaB	Conover loam, 0 to 4 percent slopes	62.83	41.9%	2	50.2
OwB	Owosso-Marlette sandy loams, 1 to 6 percent slopes	39.63	26.4%	2	63.4
Pr	Parkhill loam, non dense till subsoil, 0 to 2 percent slopes	29.11	19.4%	2	72.3
HgtahA	Houghton muck, 0 to 1 percent slopes	12.54	8.4%	5	11.0
PmsacA	Palms muck, 0 to 1 percent slopes	4.18	2.8%	5	14.6
StB	Spinks-Metea loamy sands, 0 to 6 percent slopes	0.90	0.6%	3	50.1
MaB	Marlette loam, 2 to 6 percent slopes	0.65	0.4%	2	62.9
149.85					53.8

3 fields, 201 acres in Eaton County, MI












Field 3

150 ac.

Avg. Elevation

891.32 ft

	ELEVATION RANGE	ACRES	PERCENT AREA
	896.57 ft - 898.30 ft	6.46	4.31%
	894.83 ft - 896.57 ft	21.98	14.67%
	893.09 ft - 894.83 ft	29.74	19.85%
	891.35 ft - 893.09 ft	29.86	19.93%
	889.62 ft - 891.35 ft	18.04	12.04%
	887.88 ft - 889.62 ft	11.69	7.8%
	886.14 ft - 887.88 ft	9.46	6.31%
	884.40 ft - 886.14 ft	13.40	8.94%
	882.67 ft - 884.40 ft	9.23	6.16%