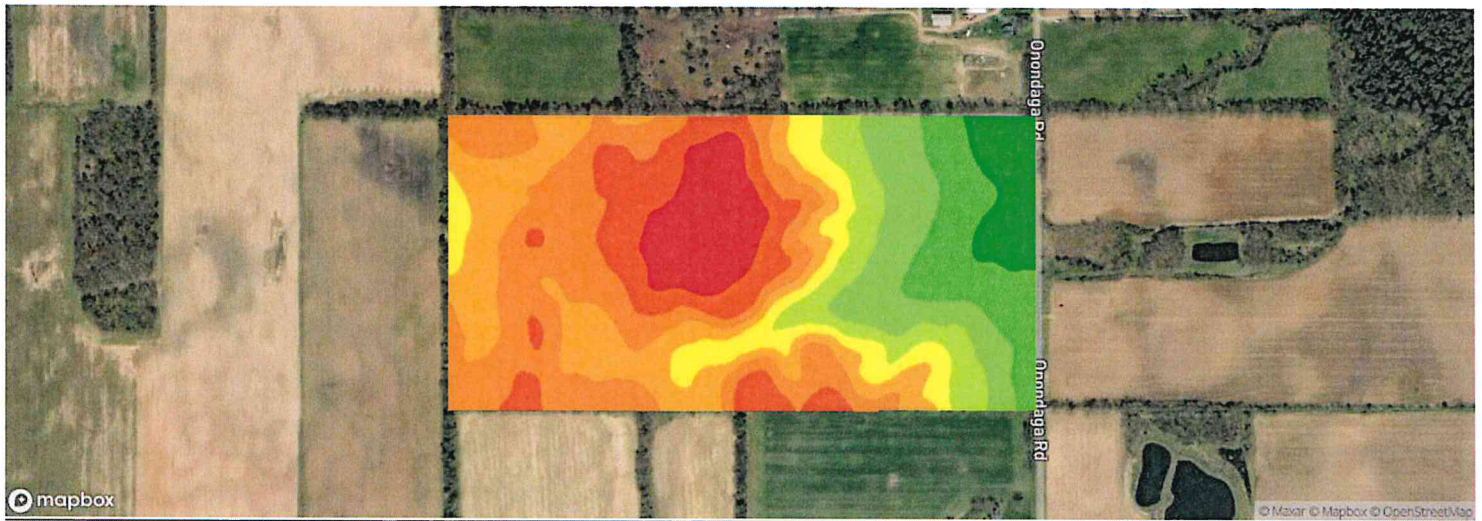


2 fields, 172 acres in Ingham County, MI








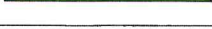



Field 1

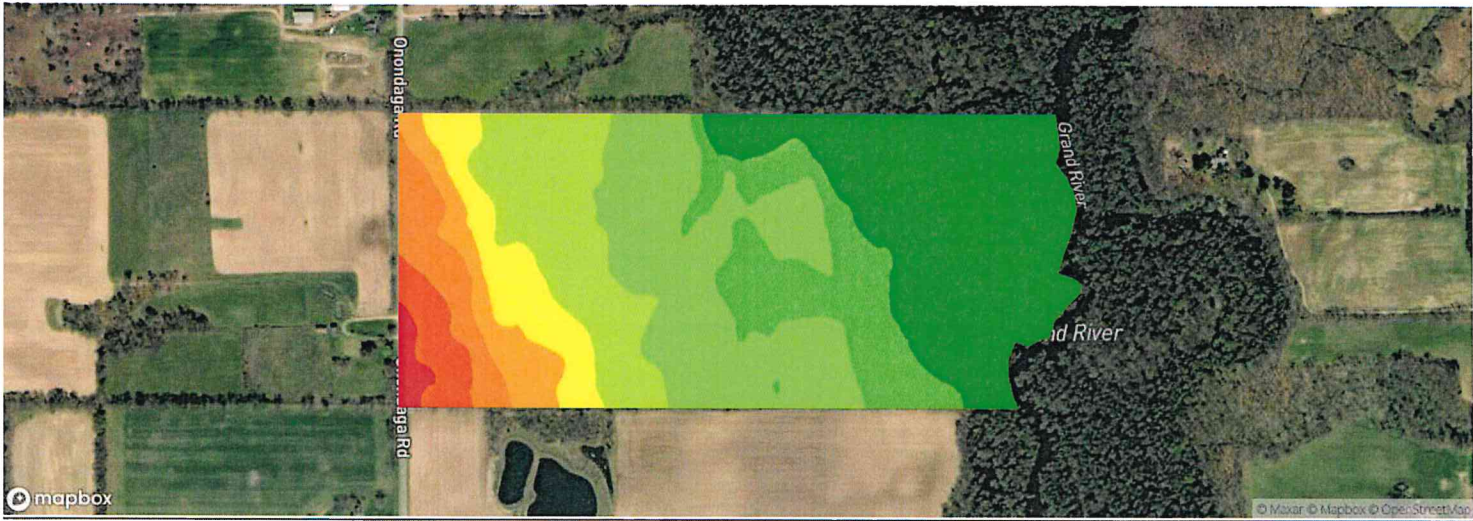
81 ac.

Avg. Elevation

967.51 ft

	ELEVATION RANGE	ACRES	PERCENT AREA
	992.23 ft - 1,000.83 ft	6.54	8.05%
	983.63 ft - 992.23 ft	9.90	12.19%
	975.04 ft - 983.63 ft	19.47	23.96%
	966.44 ft - 975.04 ft	14.22	17.5%
	957.85 ft - 966.44 ft	6.31	7.77%
	949.25 ft - 957.85 ft	5.65	6.96%
	940.66 ft - 949.25 ft	7.79	9.59%
	932.06 ft - 940.66 ft	7.32	9.01%
	923.46 ft - 932.06 ft	4.04	4.97%

2 fields, 172 acres in Ingham County, MI












Field 2

90 ac.

Avg. Elevation

900.80 ft

	ELEVATION RANGE	ACRES	PERCENT AREA
	934.92 ft - 941.15 ft	1.03	1.14%
	928.70 ft - 934.92 ft	2.78	3.08%
	922.48 ft - 928.70 ft	4.36	4.82%
	916.25 ft - 922.48 ft	4.27	4.72%
	910.03 ft - 916.25 ft	6.11	6.76%
	903.80 ft - 910.03 ft	12.71	14.06%
	897.58 ft - 903.80 ft	20.36	22.52%
	891.36 ft - 897.58 ft	12.51	13.83%
	885.13 ft - 891.36 ft	26.29	29.08%