



**HOLIDAY  
CHEERS**

Cherrywood  
*design* Lane *house*



CL-HC-5100



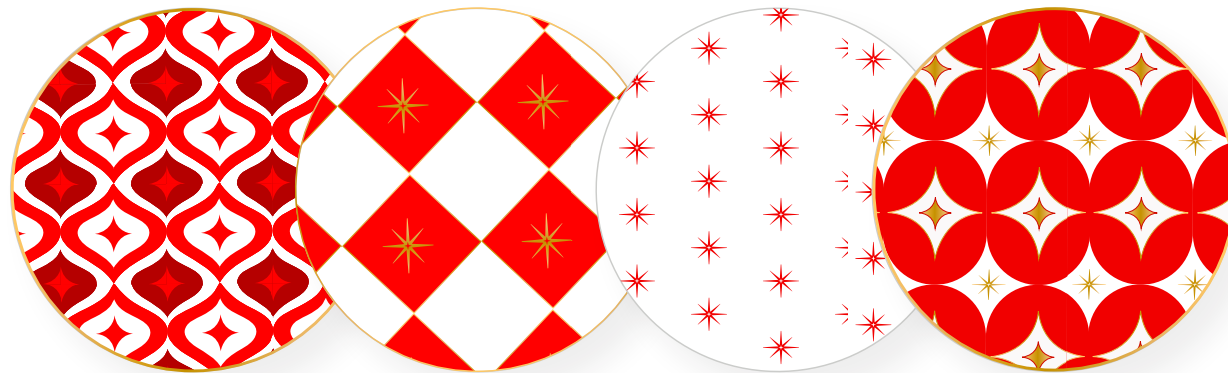
CL-HC-5101

# APPETIZER PLATES & COCKTAIL NAPKINS





# DRINKWARE & COASTERS



# BOTTLE BAGS & BAR TOWELS



*Cherry Christmas Cosmo*



10 BING CHERRIES (PITTED)  
4 OUNCES VODKA  
2 OUNCE TRIPLE SEC  
2 OUNCE LIME JUICE  
.50 OUNCE SIMPLE SYRUP

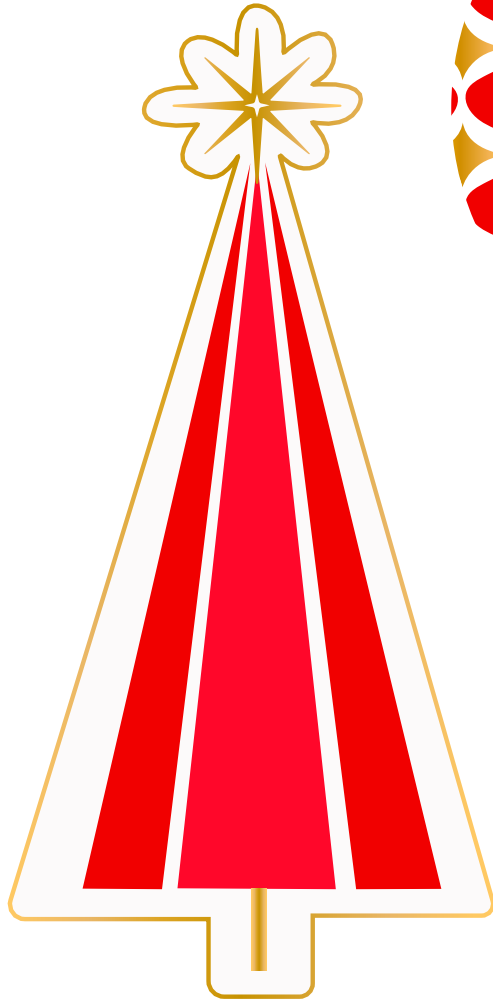


MUDDLE CHERRIES  
FILL SHAKER HALF FULL WITH ICE  
ADD VODKA, TRIPLE SEC, LIME JUICE  
CAP SHAKER AND SHAKE AT FOR 15 SECONDS

STRAIN AND DIVID LIQUID BETWEEN THE TWO  
AND FISH OUT SOME PIECES OF CHERRIES  
AND PLACE SOME IN EACH GLASS  
PLACE THE GARNISH INTO THE GLASS

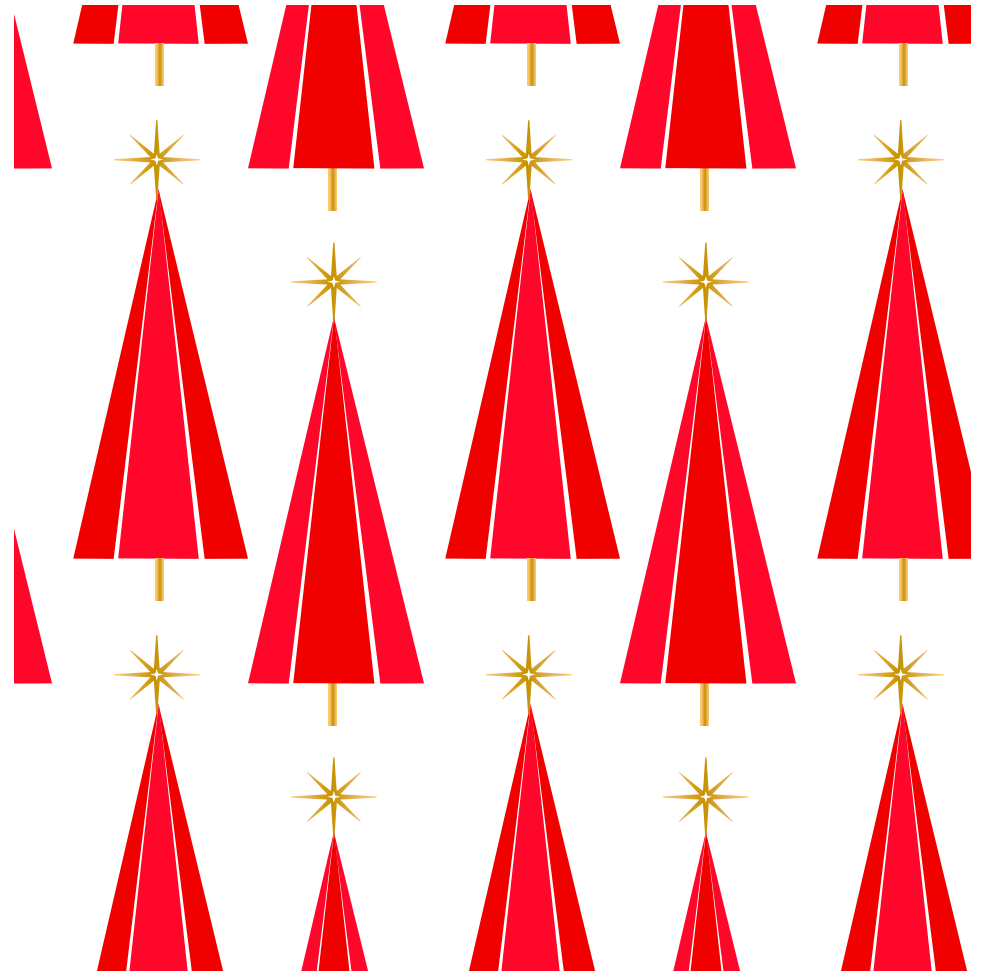
*clink and drink!*

# SERVEWEAR

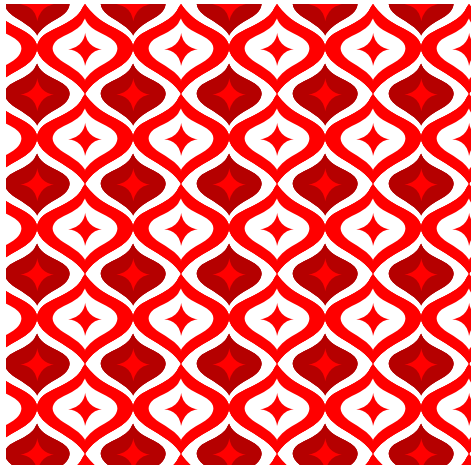




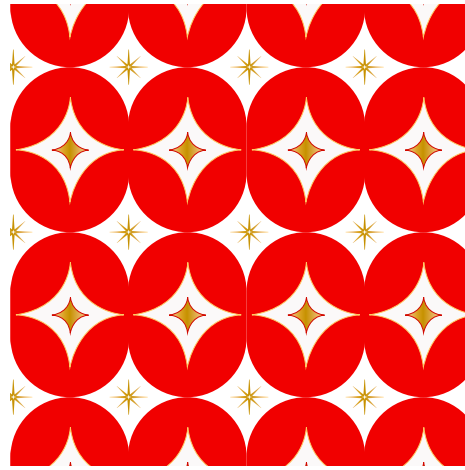
CL-HC-5103V3



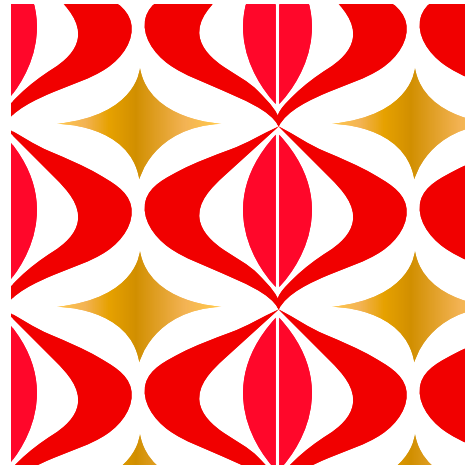
CL-HC-5103V2



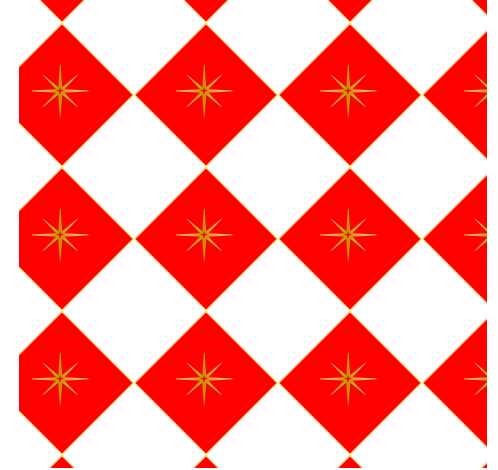
CL-HC-5106



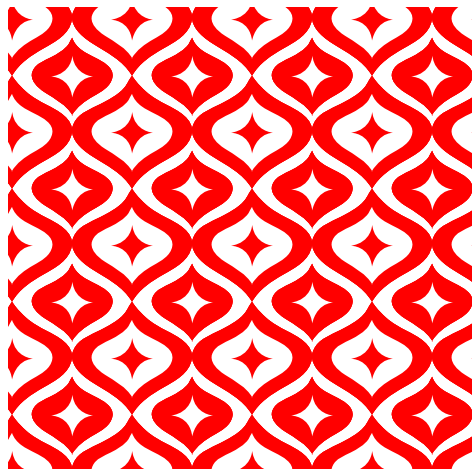
CL-HC-5105



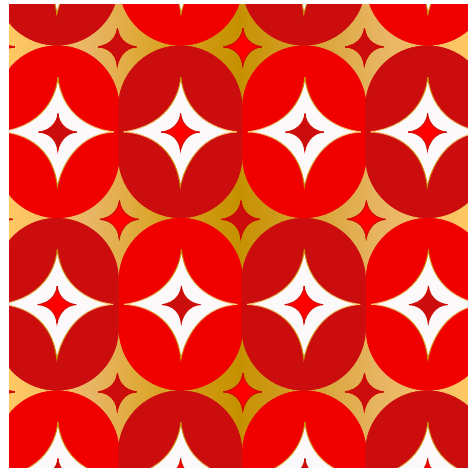
CL-HC-5114



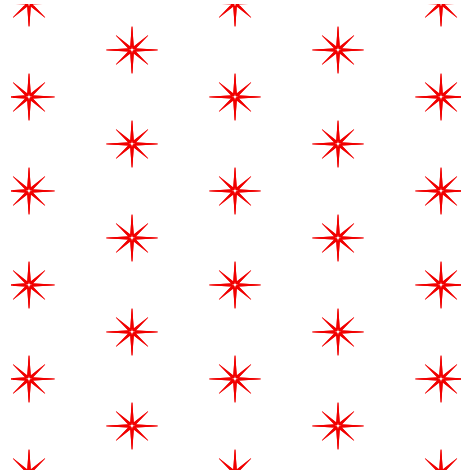
CL-HC-5112



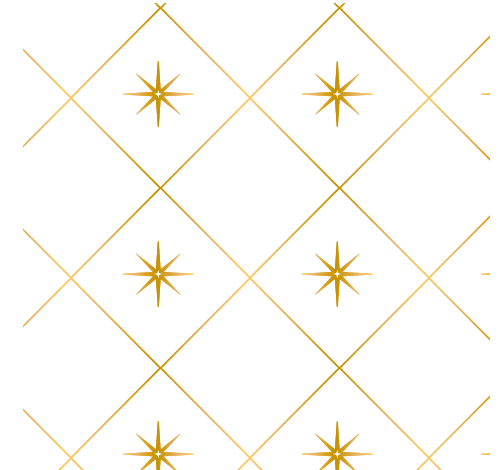
CL-HC-5106V2



CL-HC-5105V2



CL-HC-5113



CL-HC-5112GOLD





CL-HC-5110



CL-HC-5110V2