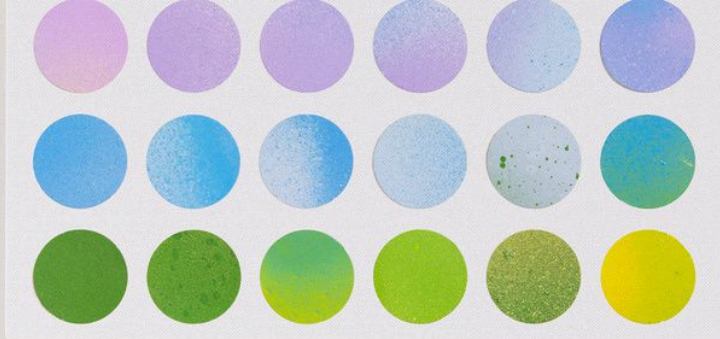


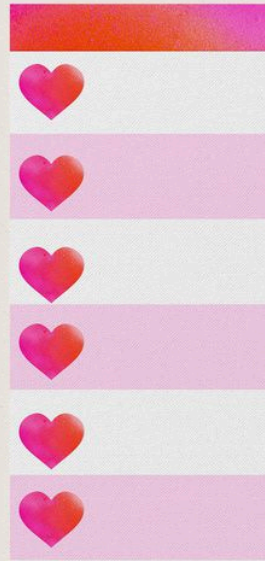
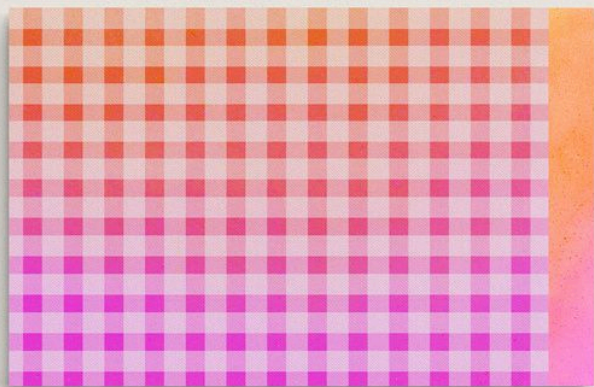
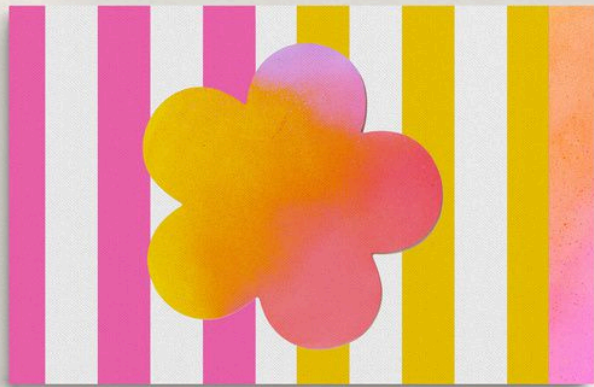
DOPAMINE DREAMS

Spring 2027

the
universe
is on
your side



enjoy
where
you
are

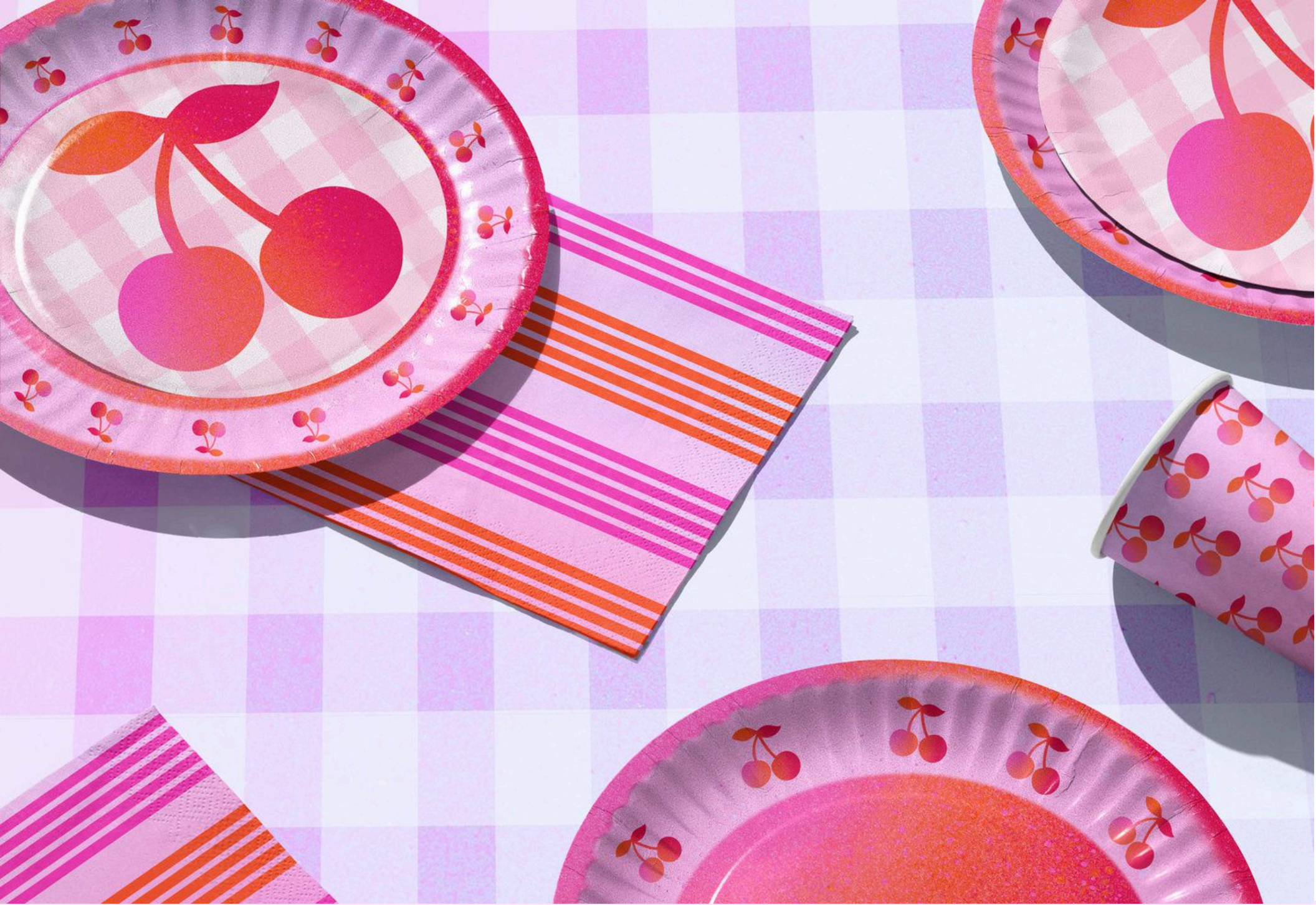




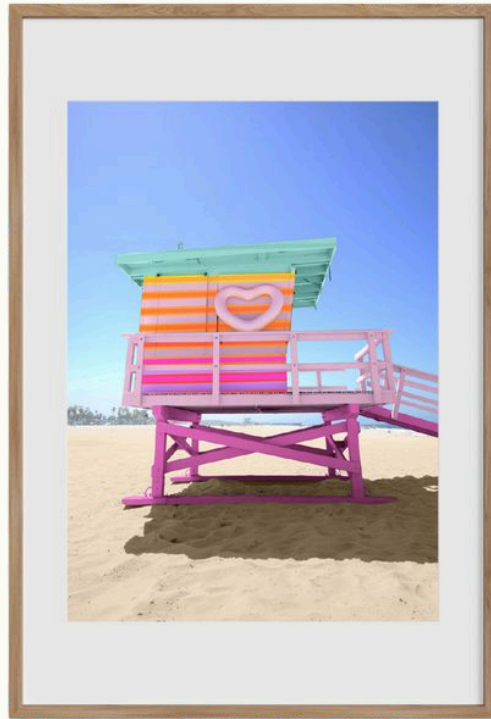














MEET THE ARTIST

Alisha Cohen is the founder and creative director behind LISH creative - a production agency for some of the world's most celebrated brands.

Since launching the company in Pittsburgh in 2016, Alisha has been known for her clean and colorful aesthetic. Her mission to inspire joy is expressed through her subjects: florals, desserts, vacations, and all things disco. She shares behind-the-scenes content and a peek into her life as a business owner, mom, and runner, on her Instagram.

SELECT CLIENTS AND RETAIL PARTNERS

