



LISH CREATIVE

2025 Brand Book

WHO WE ARE:

a full-service creative
production agency for the

**MOST
COLORFUL
BRANDS IN
THE WORLD!**





OUR MISSION:

we aim to

INSPIRE JOY

—

**CHAMPION
CREATIVITY**

—

**EMPOWER
ALL WOMEN**

in everything that we do.



OUR GOAL:

for the past 9 years we've
captured product photography
and video content for some of the
LARGEST BRANDS IN THE WORLD.

**NOW, WE WANT
A ROLE IN
MAKING THEM.**



WORK FEATURED BY:



AdAge

Forbes



THE WALL STREET JOURNAL.

Women'sHealth

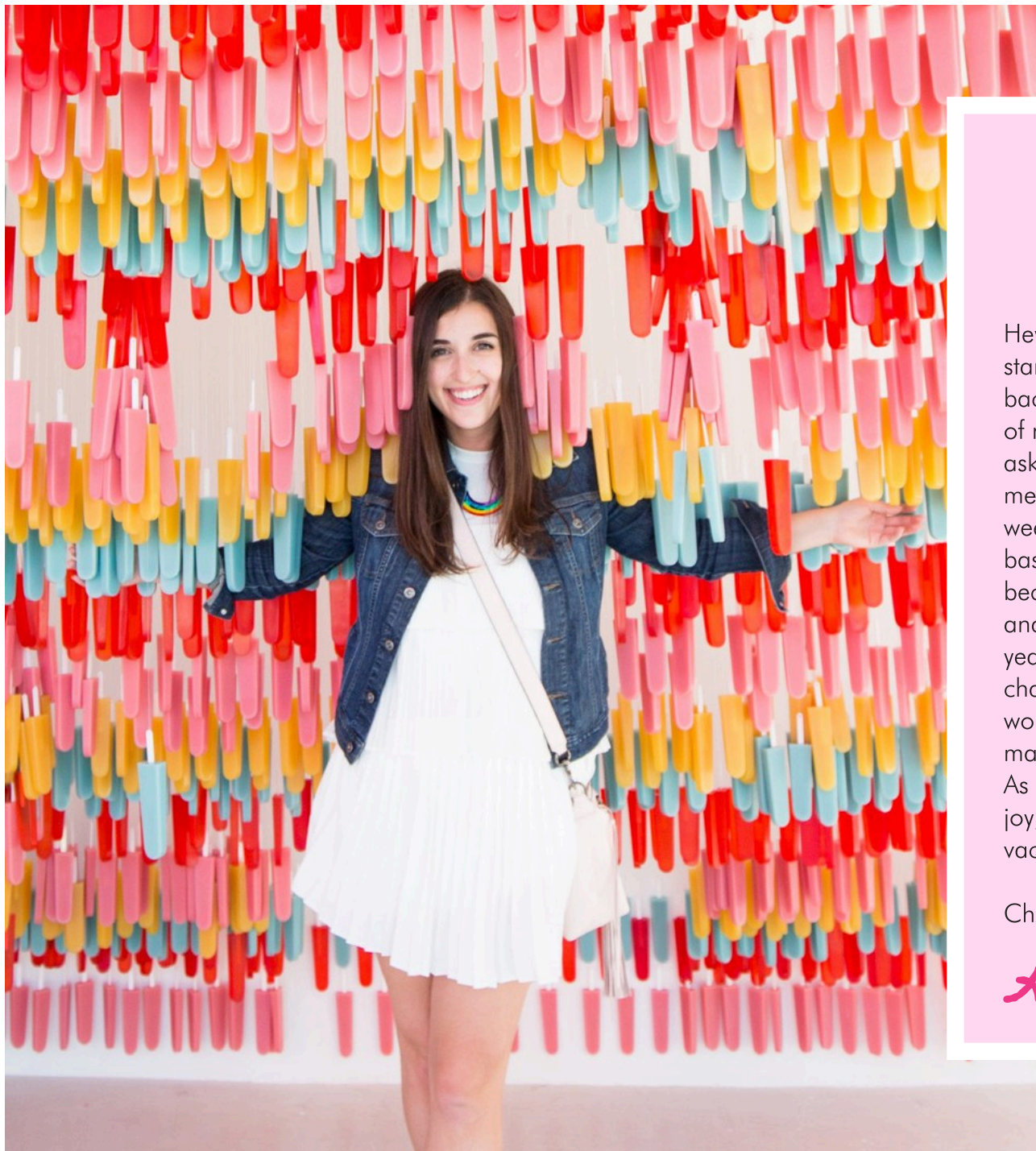
BuzzFeed

THE
HUFFINGTON
POST



SELECT CLIENTS AND RETAIL PARTNERS:





MEET ALISHA



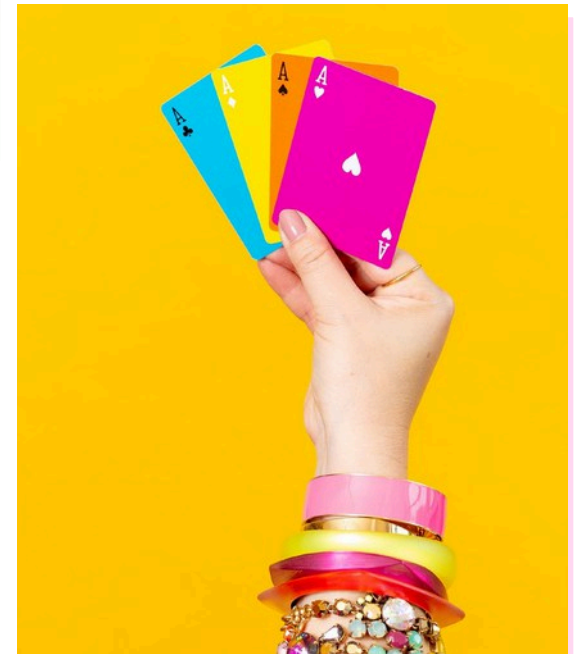
Hey I'm Alisha, but my friends call me LISH! I started using social media as a creative outlet back in 2014. Brands soon started to take notice of my clean and colorful aesthetic and began asking me if I could take photos for their social media accounts too. I worked every night and weekend to create content and build a client base. When I had to start turning away work because of my 9-5 job, I put in my 2 weeks notice and pursued LISH creative full-time. In the 8+ years since starting my business, I've had the chance to produce content for some of the world's most distinguished brands. Now, I want to make my colorful artwork more accessible for all. As you look through these pages, I hope you feel joy, inspiration, and the need to take a tropical vacation.

Cheers!

Alisha

THINGS WE LOVE:

CLEAN & COLORFUL
COMPOSITIONS

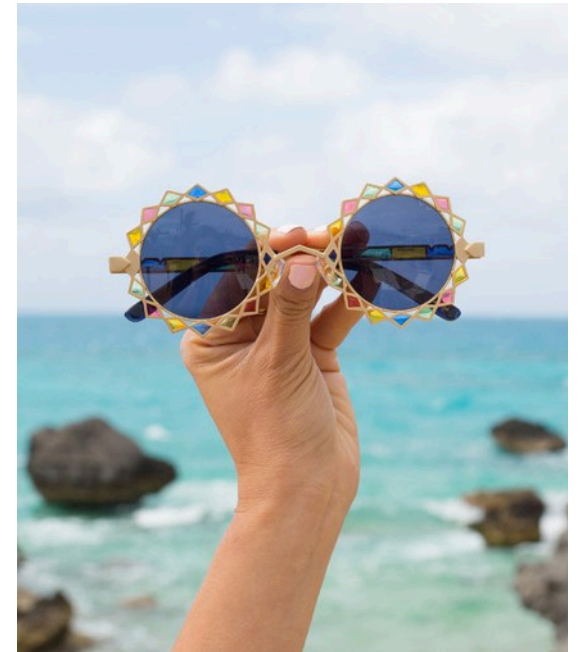
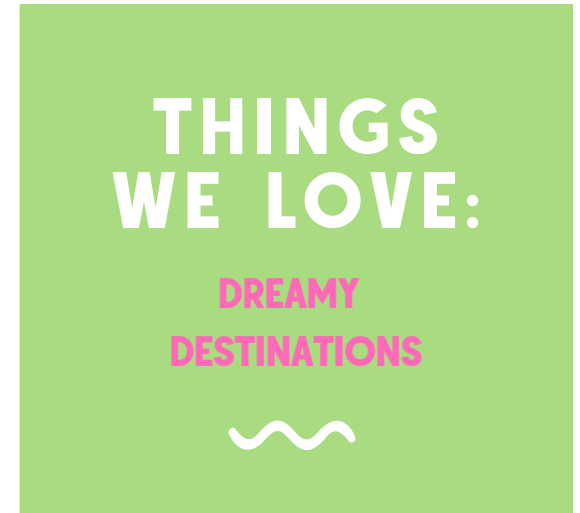




**THINGS
WE LOVE:**

DISCO EVERYTHING

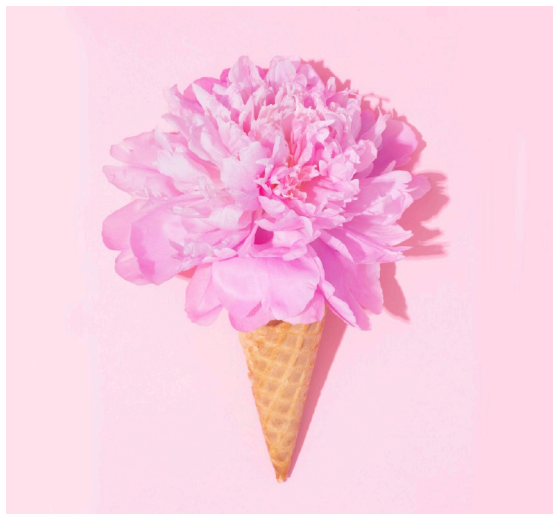




THINGS WE LOVE:

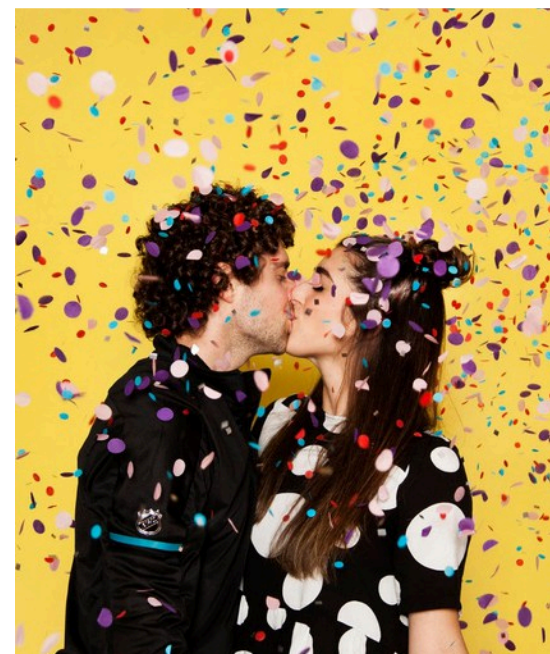
STUNNING SWEETS





THINGS WE LOVE:

COLORFUL
CELEBRATIONS



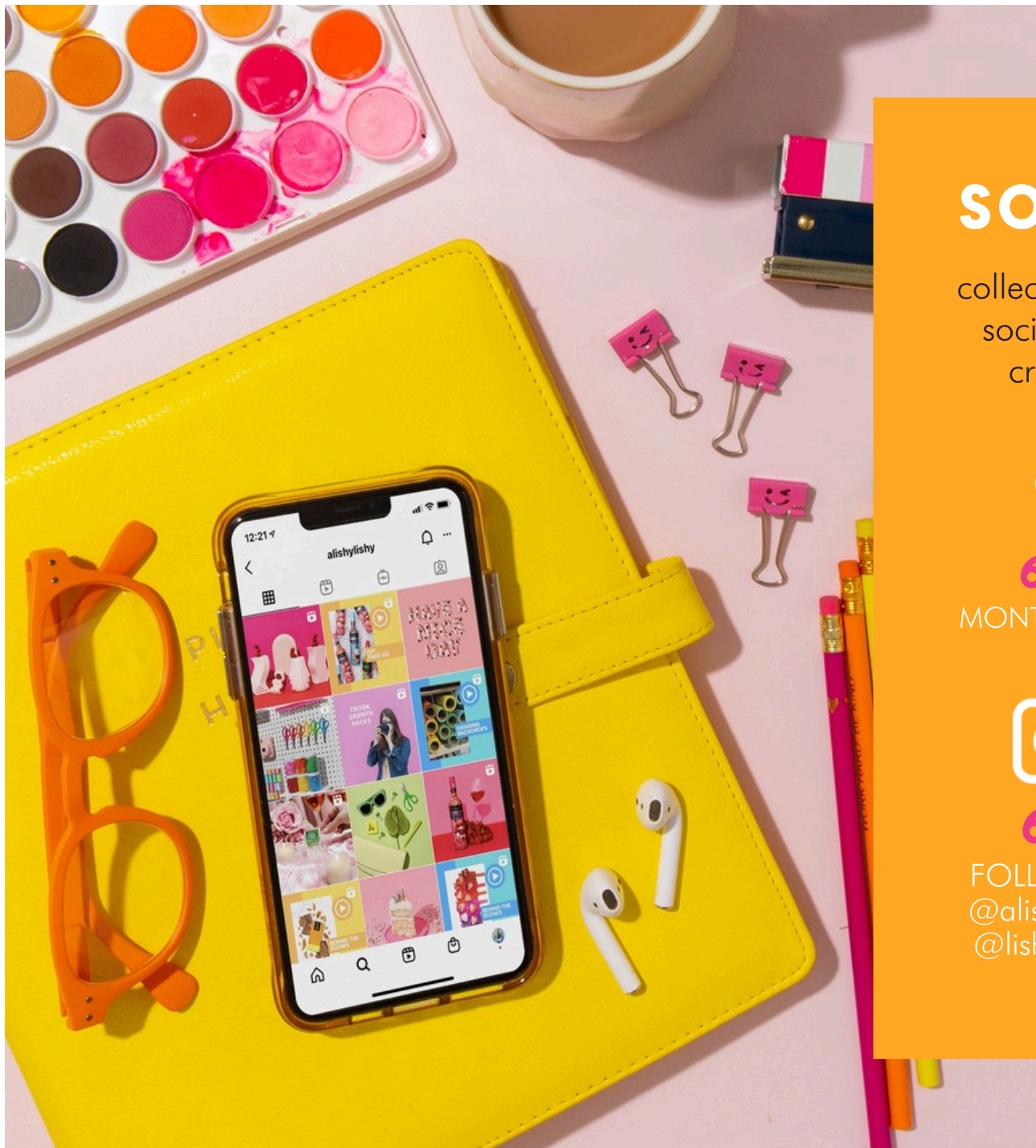
all licensed collections will be
professionally art directed, styled and
edited by the team at

LISH
CREATIVE



PRODUCT PHOTOGRAPHY & STYLING WORK





SOCIAL PROOF:

collections will be displayed across social media to an audience of creative, millennial women.



650K

MONTHLY VIEWS



400K+

FOLLOWERS



68K

FOLLOWERS

@alishylisy+
@lishcreative

85%

WOMEN

62%

BETWEEN 18-32
YEARS OLD

LISH CREATIVE

CONTACT:
LISHCREATIVE.COM
HELLO@LISHCREATIVE.COM
724.747.8358



FOR LICENSING
INQUIRIES, CONTACT

wain's world

LIZ WAIN
LIZWAIN@LIZWAIN.COM
312.848.8563

