



In-Season



Two if by Sea Studios, LLC

Life is
too short
to live
in black
and white.

live in-season



In-Season

PATTERNS



In-Season



In-Season

STATIONERY



In-Season

TABLETOP

TWO_GAV_3274



TWO_GAV_3273



TWO_GAV_3275



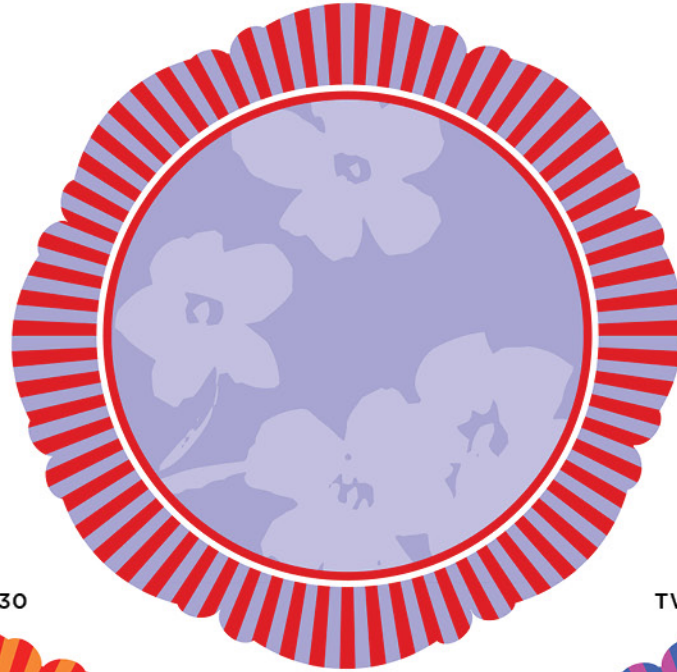
TWO_GAV_3276



In-Season

TABLETOP

TWO_GAV_3331



TWO_GAV_3333



TWO_GAV_3330



TWO_GAV_3332

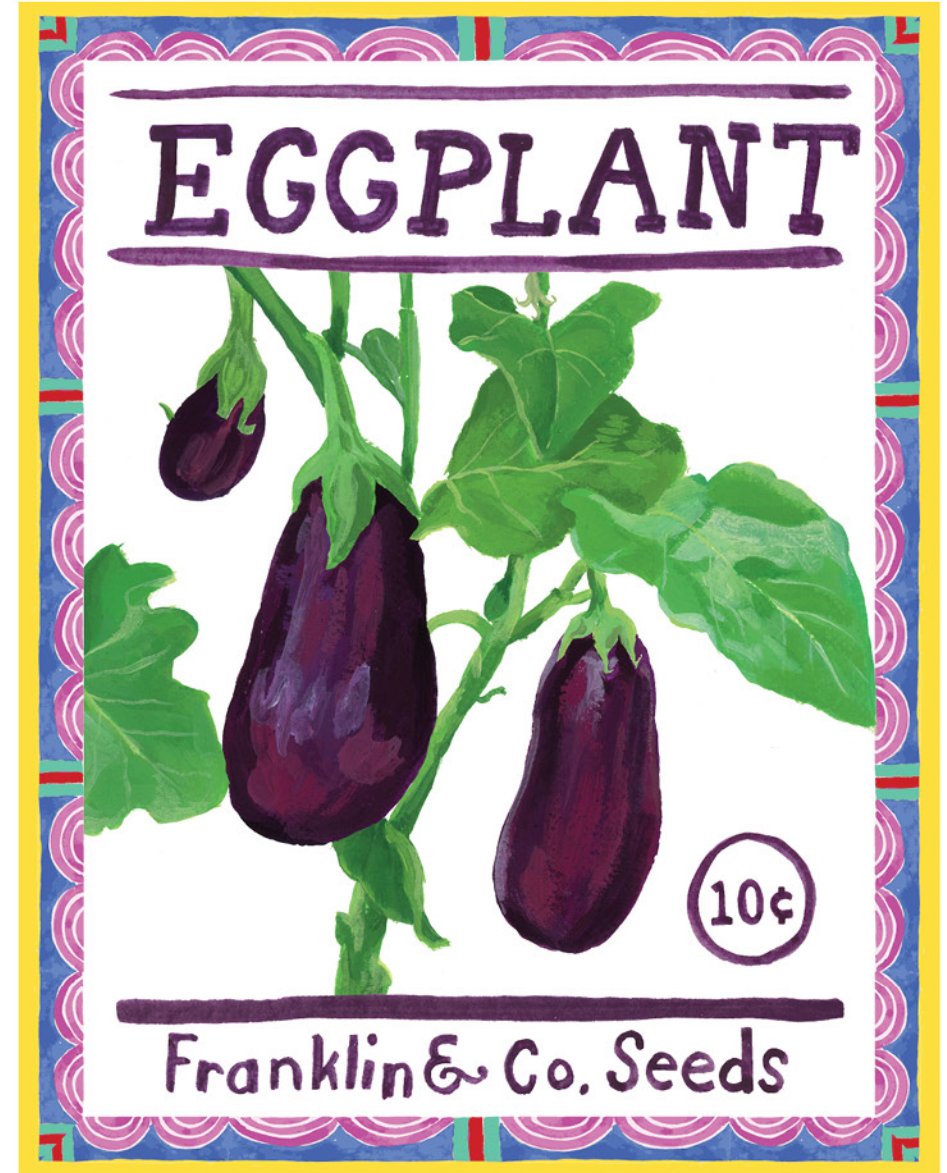


In-Season

TWO_GAV_3277b



TWO_GAV_3278b

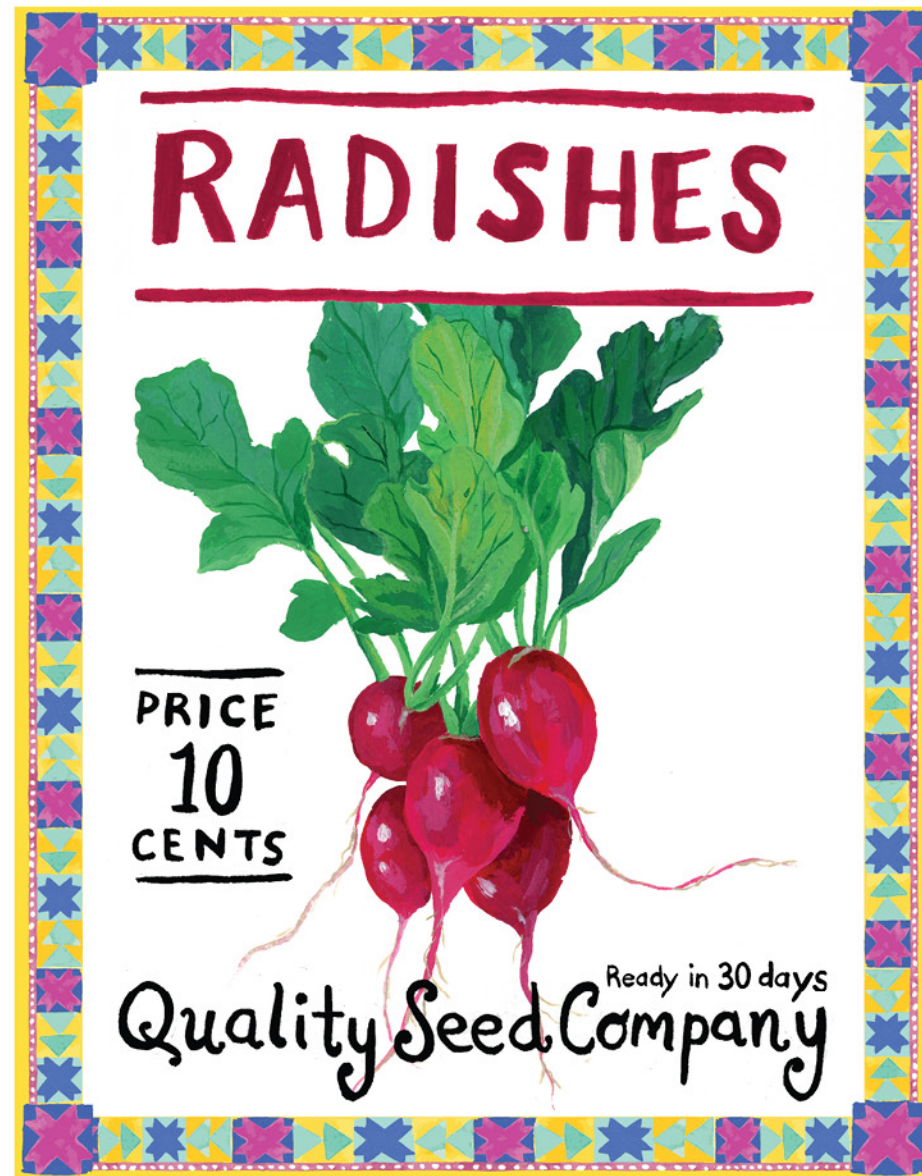


In-Season

TWO_GAV_3280b



TWO_GAV_3279b



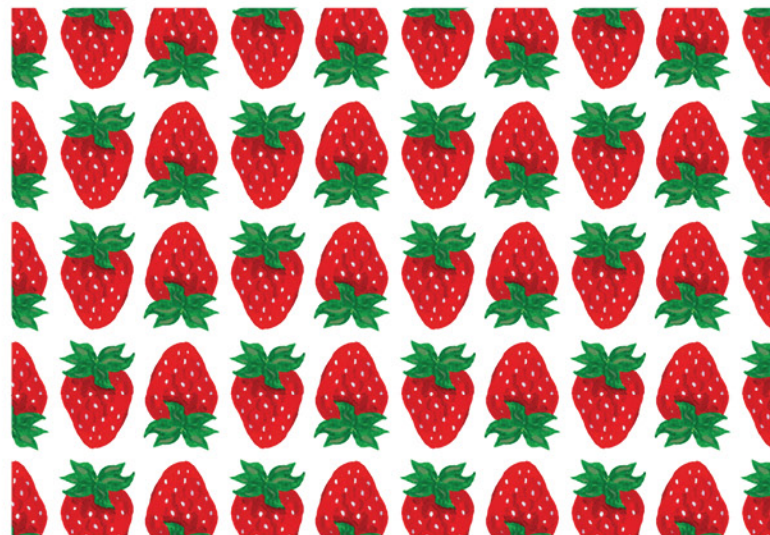
In-Season

PATTERNS

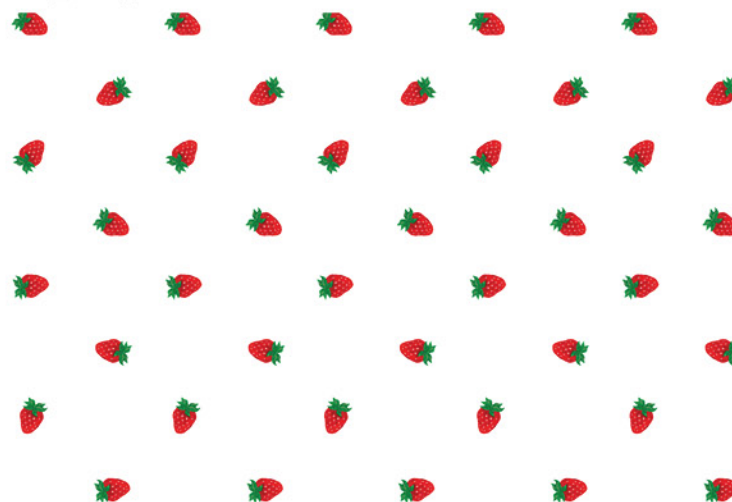
TWO_GAV_3328



TWO_GAV_3329



TWO_GAV_3335



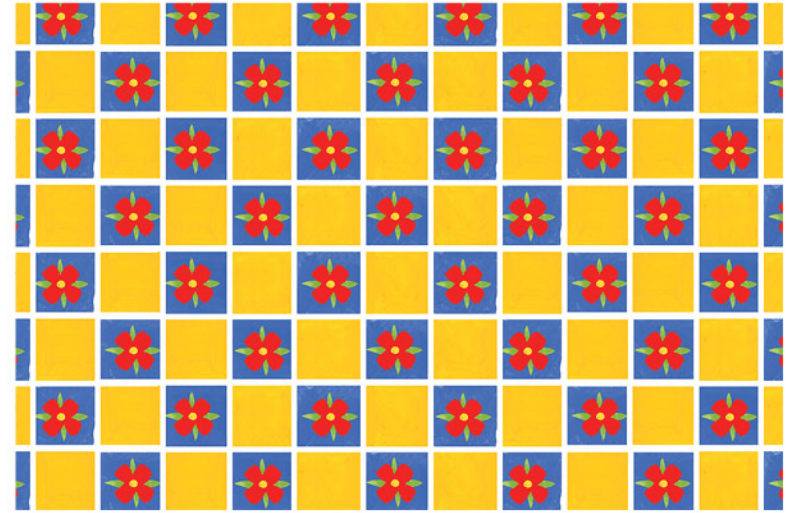
In-Season

PATTERNS

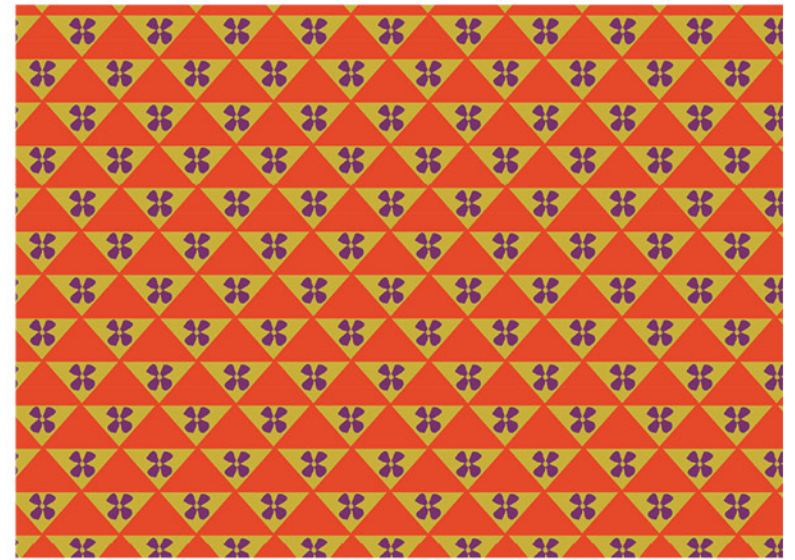
TWO_GAV_3284



TWO_GAV_3281



TWO_GAV_3282



ABOUT BRITTANY

Brittany Zeller-Holland hails from Michigan's Upper Peninsula and much of her spirit stems from an upbringing that embraced nature, creativity and travel. As the paintbrush behind her business, Two if by Sea Studios, Brittany has been creating surface pattern and product designs for companies all over the world for nearly 20 years!

Her business has grown and evolved alongside her heart with much of her time being dedicated to her two small children, Roald and Townes.

Aspiring to send authentic designs into the universe, Brittany has most recently been relishing in collaboration, wandering wooded trails and wholehearted relationships built among creative communities both in her home state of Michigan and her current residence in North Carolina.



PARTNERSHIPS

Evergreen
Chasing Paper
Thirstystone
Demdaco
Eccolo
Artissimo
Creative Bath
Current Media
Nordstroms
Minted

Uncommon Goods
180 Degrees
Prima
KAF Home
Rock Your Baby
Raz Imports
Trade Cie
Graphique de France
Enchante
Transpac

**wain's
world**

REPRESENTED BY WAIN'S WORLD
PH 312.848.8563 • LIZWAIN@LIZWAIN.COM