

TWO IF BY SEA STUDIOS



ROOTED IN THE ANCIENT MYSTICISM OF CULTURES AROUND  
THE WORLD, THIS SPIRITUAL COLLECTION IS COMPRISED OF  
HAND-DRAWN ICONS AND LAYERED, EARTHLY ELEMENTS.

# TERRALUNA

WALL ART

TWO\_TLU\_2292

*Two* IF BY *Sea*  
STUDIOS, LLC



**wain's  
WORLD**

©TWO IF BY SEA STUDIOS, LLC 2022 • REPRESENTED BY WAIN'S WORLD • PH 312.848.8563 • LIZWAIN@LIZWAIN.COM

TWO\_TLU\_2328



TWO\_TLU\_2329





# TERRALUNA

GIFT BAGS

*Two* IF BY *Sea*  
STUDIOS, LLC



**wain's  
WORLD**

©TWO IF BY SEA STUDIOS, LLC 2022 • REPRESENTED BY WAIN'S WORLD • PH 312.848.8563 • LIZWAIN@LIZWAIN.COM

TERRALUNA  
MUG

TWO\_TLU\_2290

Two IF BY Sea  
STUDIOS, LLC



**wain's  
WORLD**

©TWO IF BY SEA STUDIOS, LLC 2022 • REPRESENTED BY WAIN'S WORLD • PH 312.848.8563 • LIZWAIN@LIZWAIN.COM

TERRALUNA  
WALL HANGING

TWO\_TLU\_2288

Two IF BY Sea  
STUDIOS, LLC



wain's  
WORLD

©TWO IF BY SEA STUDIOS, LLC 2022 • REPRESENTED BY WAIN'S WORLD • PH 312.848.8563 • LIZWAIN@LIZWAIN.COM

TERRA LUNA

TWO\_TLU\_2282

Two IF BY Sea  
STUDIOS, LLC



wain's  
WORLD

©TWO IF BY SEA STUDIOS, LLC 2022 • REPRESENTED BY WAIN'S WORLD • PH 312.848.8563 • LIZWAIN@LIZWAIN.COM







TERRA LUNA

TWO\_TLU\_2280

Two IF BY Sea  
STUDIOS, LLC



wain's  
WORLD

©TWO IF BY SEA STUDIOS, LLC 2022 • REPRESENTED BY WAIN'S WORLD • PH 312.848.8563 • LIZWAIN@LIZWAIN.COM

TWO\_TLU\_2283



TERRA LUNA

Two IF BY Sea  
STUDIOS, LLC

TWO\_TLU\_2292



wain's  
WORLD

©TWO IF BY SEA STUDIOS, LLC 2022 • REPRESENTED BY WAIN'S WORLD • PH 312.848.8563 • LIZWAIN@LIZWAIN.COM



TERRA LUNA

Two IF BY Sea  
STUDIOS, LLC

TWO\_TLU\_2329



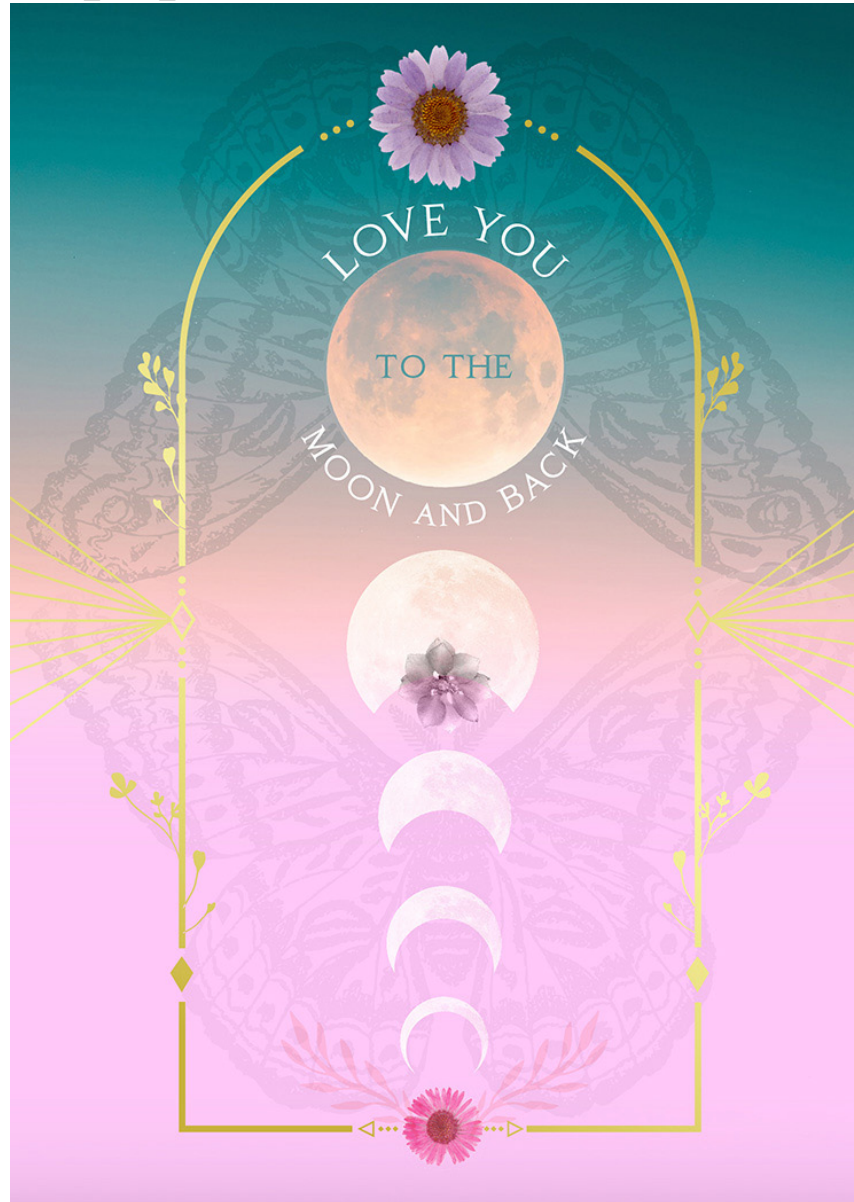
wain's  
WORLD

©TWO IF BY SEA STUDIOS, LLC 2022 • REPRESENTED BY WAIN'S WORLD • PH 312.848.8563 • LIZWAIN@LIZWAIN.COM

TWO\_TLU\_2327b



TWO\_TLU\_2295

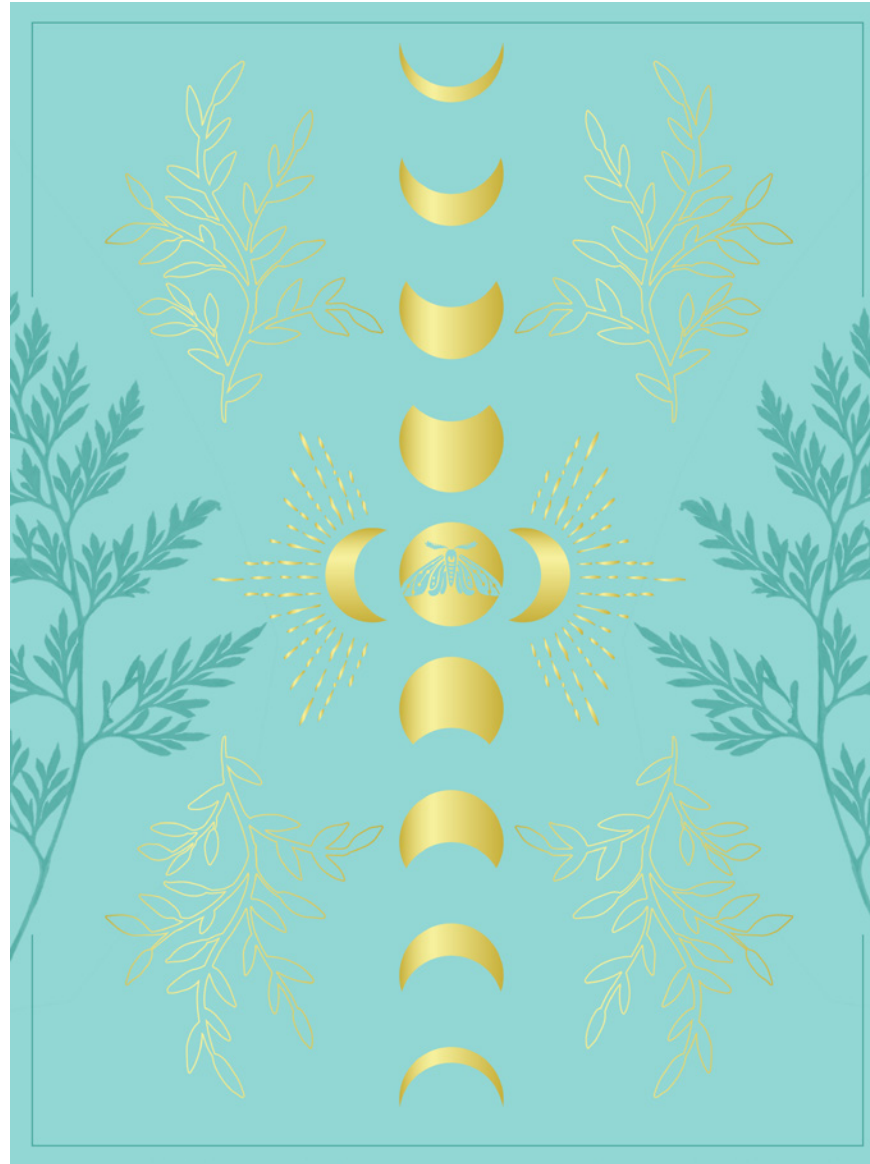




TWO\_TLU\_2328



TWO\_TLU\_2330



TWO\_TLU\_2332





TWO\_TLU\_2331



TWO\_TLU\_2285



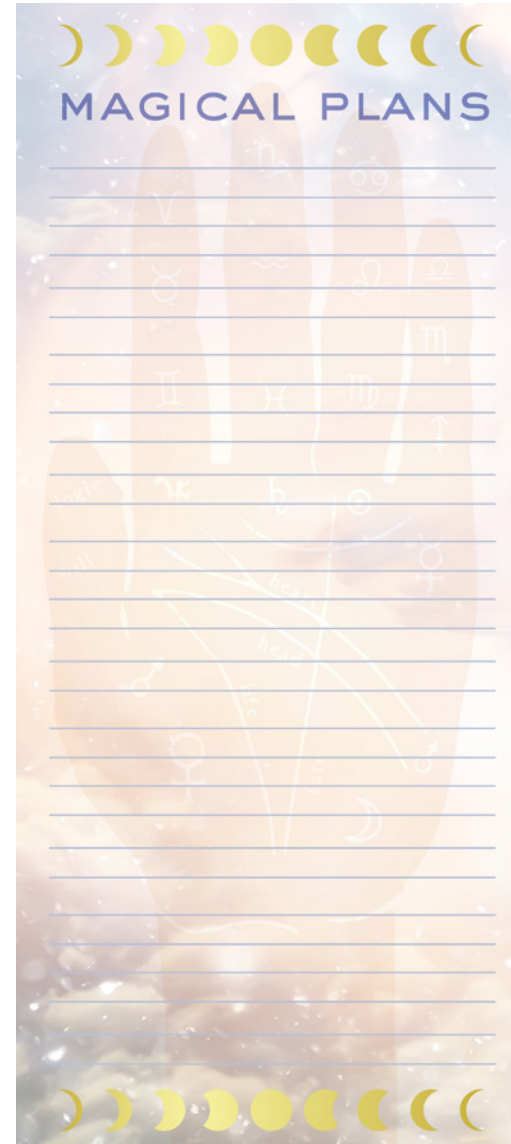
TWO\_TLU\_2286



TWO\_TLU\_2275



TWO\_TLU\_2275





# TERRALUNA

TWO\_TLU\_2290



Two Sea  
IF BY  
STUDIOS, LLC

TWO\_TLU\_2290



**wain's  
WORLD**

©TWO IF BY SEA STUDIOS, LLC 2022 • REPRESENTED BY WAIN'S WORLD • PH 312.848.8563 • LIZWAIN@LIZWAIN.COM

## AMULET MUGS



TWO\_TLU\_2272



TWO\_TLU\_2270



TWO\_TLU\_2269



TWO\_TLU\_2266



TWO\_TLU\_2270



TWO\_TLU\_2273



TWO\_TLU\_2271

## ADDITIONAL AMULET DESIGN OPTIONS





## ABOUT BRITTANY

Brittany Zeller-Holland hails from Michigan's Upper Peninsula and much of her spirit stems from an upbringing that embraced nature, creativity and travel. As the paintbrush behind her business, Two if by Sea Studios, Brittany has been creating surface pattern and product designs for companies all over the world for 15 years!

Her business has grown and evolved alongside her heart with much of her time being dedicated to her two small children, Roald and Townes.

Aspiring to send authentic designs into the universe, Brittany has most recently been relishing in collaboration, wandering wooded trails and wholehearted relationships built creative communities both in her home state of Michigan and her current residence in North Carolina.



## PARTNERSHIPS

Evergreen  
Chasing Paper  
Thirstystone  
Demdaco  
Eccolo  
Artissimo  
Creative Bath  
Current Media  
Nordstroms  
Minted

Uncommon Goods  
180 Degrees  
Prima  
KAF Home  
Rock Your Baby  
Raz Imports  
Trade Cie  
Graphique de France  
Enchante  
Transpac

**wain's  
WORLD**

REPRESENTED BY WAIN'S WORLD  
PH 312.848.8563 • LIZWAIN@LIZWAIN.COM