

TWO IF BY SEA STUDIOS

GLOBAL ESSENCE

With bold compositions inspired by primitive African folk art,
Global Essence brings worldly imprints into patterns and onto
a variety of home and office products.

GLOBAL ESSENCE

TABLETOP

Two If By Sea
STUDIOS, LLC



**wain's
WORLD**

©TWO IF BY SEA STUDIOS, LLC 2019 • REPRESENTED BY WAIN'S WORLD • PH 312.848.8563 • LIZWAIN@LIZWAIN.COM

GLOBAL ESSENCE

TABLETOP

Two IF BY *Sea*
STUDIOS, LLC



**wain's
WORLD**

©TWO IF BY SEA STUDIOS, LLC 2019 • REPRESENTED BY WAIN'S WORLD • PH 312.848.8563 • LIZWAIN@LIZWAIN.COM

GLOBAL ESSENCE

ALTERNATE DINNER PLATES

Two IF BY *Sea*
STUDIOS, LLC



wain's
WORLD

©TWO IF BY SEA STUDIOS, LLC 2019 • REPRESENTED BY WAIN'S WORLD • PH 312.848.8563 • LIZWAIN@LIZWAIN.COM

GLOBAL ESSENCE

ACCENT PIECES

Two IF BY Sea
STUDIOS, LLC



**wain's
WORLD**

©TWO IF BY SEA STUDIOS, LLC 2019 • REPRESENTED BY WAIN'S WORLD • PH 312.848.8563 • LIZWAIN@LIZWAIN.COM

GLOBAL ESSENCE

SERVEWARE

Two IF BY Sea
STUDIOS, LLC



**wain's
WORLD**

©TWO IF BY SEA STUDIOS, LLC 2019 • REPRESENTED BY WAIN'S WORLD • PH 312.848.8563 • LIZWAIN@LIZWAIN.COM

GLOBAL ESSENCE

SERVEWARE

Two IF BY *Sea*
STUDIOS, LLC



**wain's
WORLD**

©TWO IF BY SEA STUDIOS, LLC 2019 • REPRESENTED BY WAIN'S WORLD • PH 312.848.8563 • LIZWAIN@LIZWAIN.COM

GLOBAL ESSENCE

PILLOWS

Two IF BY *Sea*
STUDIOS, LLC



**wain's
WORLD**

©TWO IF BY SEA STUDIOS, LLC 2019 • REPRESENTED BY WAIN'S WORLD • PH 312.848.8563 • LIZWAIN@LIZWAIN.COM

GLOBAL ESSENCE

STORAGE

Two IF BY *Sea*
STUDIOS, LLC



**wain's
WORLD**

©TWO IF BY SEA STUDIOS, LLC 2019 • REPRESENTED BY WAIN'S WORLD • PH 312.848.8563 • LIZWAIN@LIZWAIN.COM

GLOBAL ESSENCE

BATH ACCESSORIES

Two IF BY *Sea*
STUDIOS, LLC



TWO-0497c

wain's
WORLD

©TWO IF BY SEA STUDIOS, LLC 2019 • REPRESENTED BY WAIN'S WORLD • PH 312.848.8563 • LIZWAIN@LIZWAIN.COM

GLOBAL ESSENCE

BATH ACCESSORIES



BRASS ACCENTS



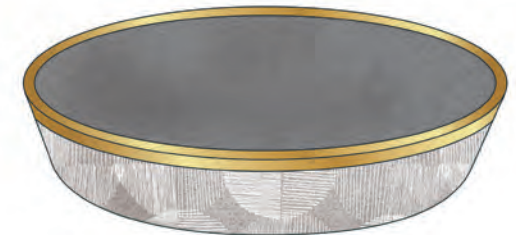
TWO-0773



TWO-0774



TWO-0775



TWO-0776

EMBOSSSED DESIGN TEXTURE ON MATTE STONEWARE

GLOBAL ESSENCE

BATH ACCESSORIES

Two IF BY *Sea*
STUDIOS, LLC



TWO-0777

EMBOSSSED DESIGN ON MATTE STONEWARE



TWO-0778

TOWEL

**wain's
WORLD**

©TWO IF BY SEA STUDIOS, LLC 2019 • REPRESENTED BY WAIN'S WORLD • PH 312.848.8563 • LIZWAIN@LIZWAIN.COM

GLOBAL ESSENCE

STATIONERY

Two IF BY Sea
STUDIOS, LLC

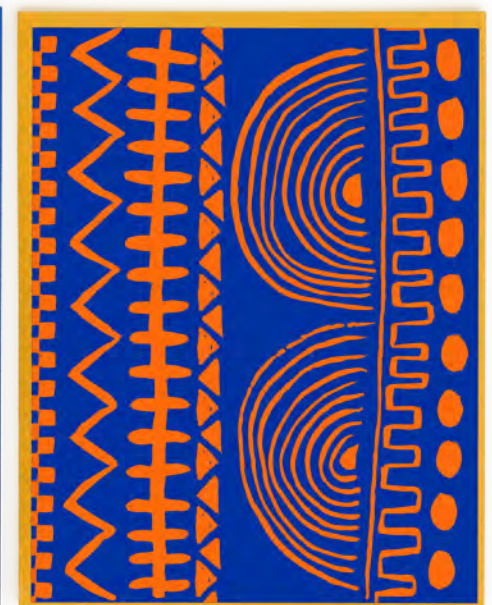
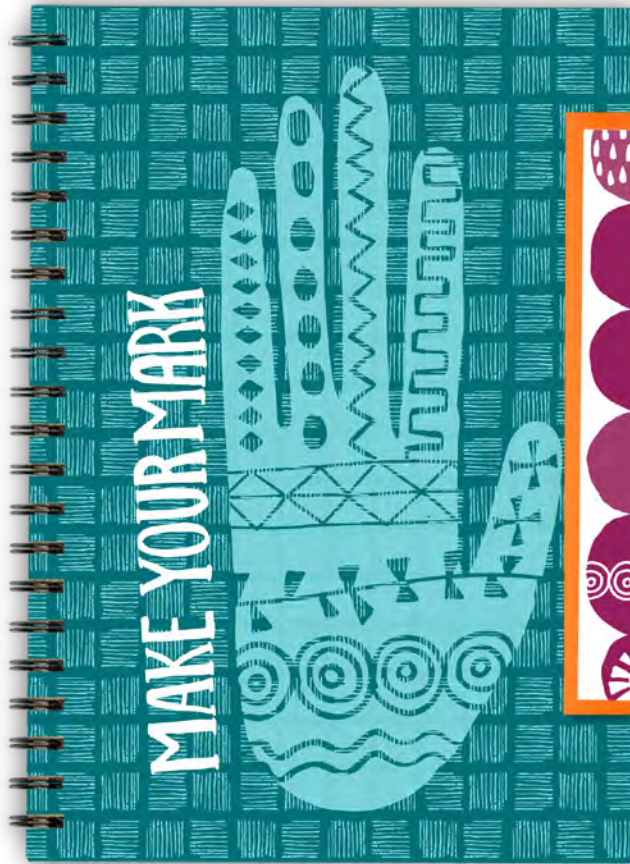


wain's
WORLD

©TWO IF BY SEA STUDIOS, LLC 2019 • REPRESENTED BY WAIN'S WORLD • PH 312.848.8563 • LIZWAIN@LIZWAIN.COM

GLOBAL ESSENCE

STATIONERY



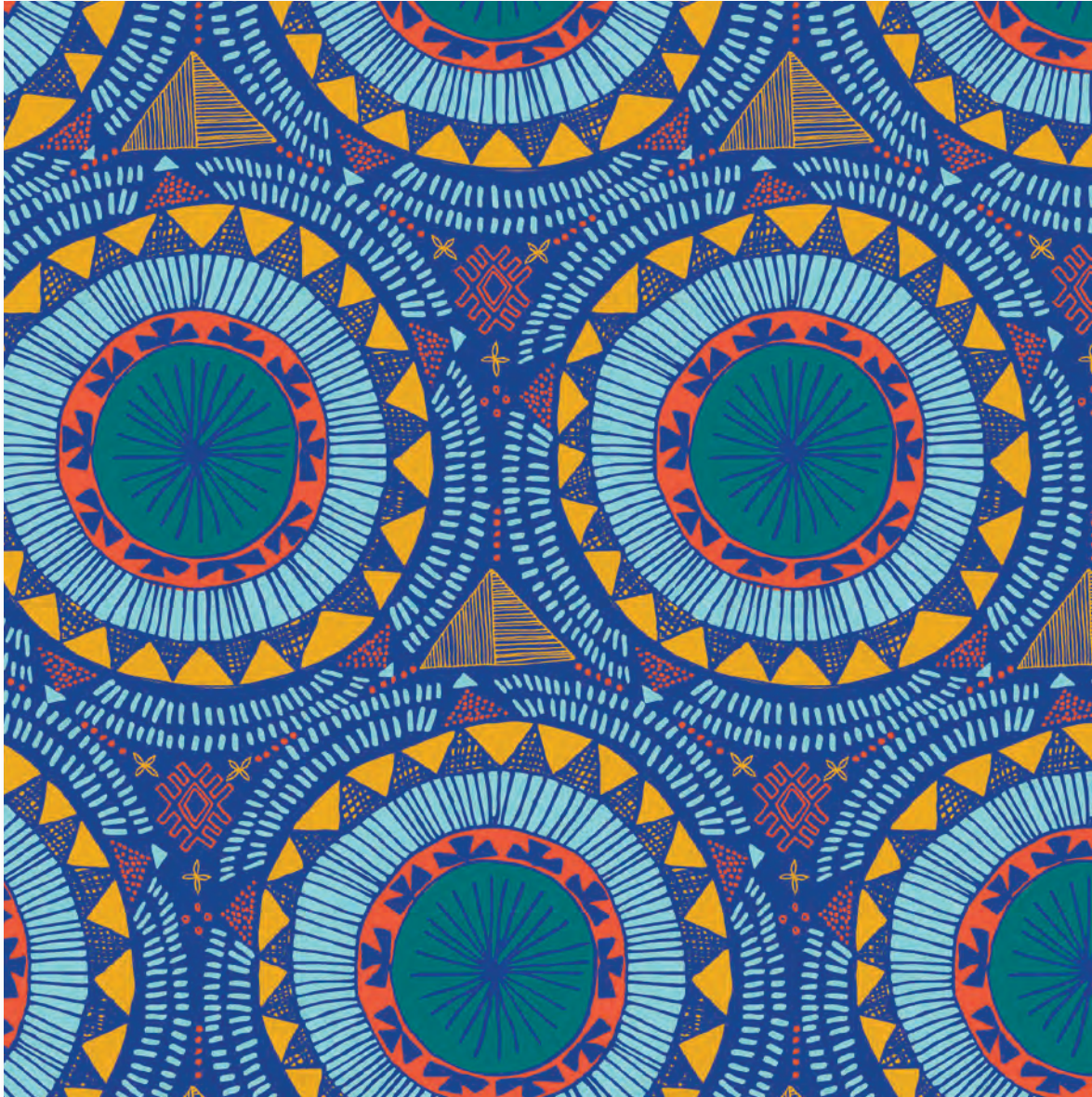
**wain's
WORLD**

©TWO IF BY SEA STUDIOS, LLC 2019 • REPRESENTED BY WAIN'S WORLD • PH 312.848.8563 • LIZWAIN@LIZWAIN.COM

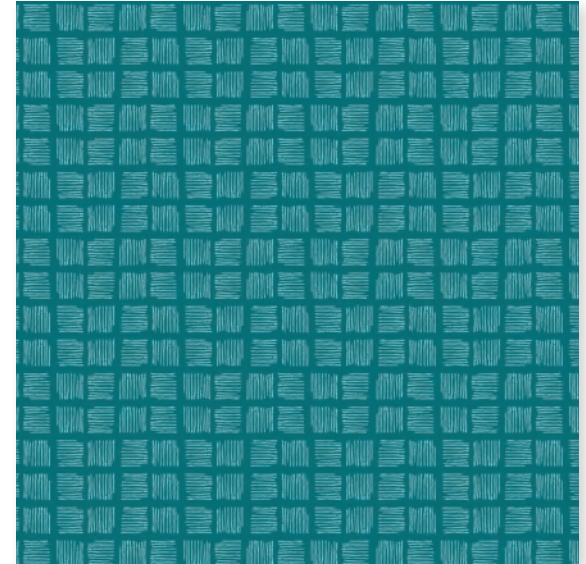
GLOBAL ESSENCE



TWO-0050



TWO-0044b



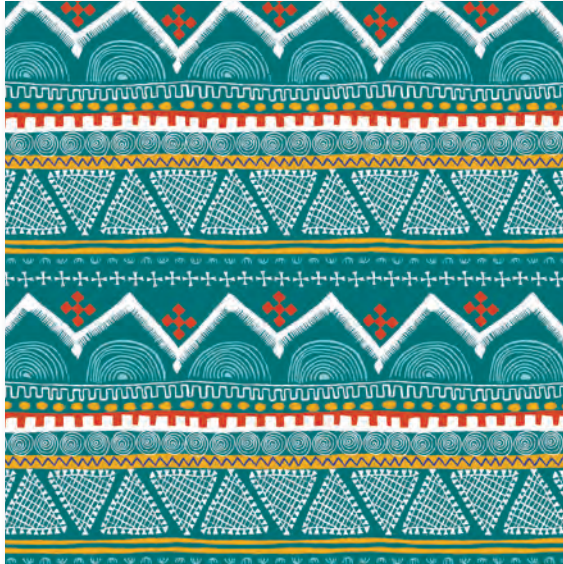
TWO-0040



GLOBAL ESSENCE



TWO-0041b



TWO-0042c



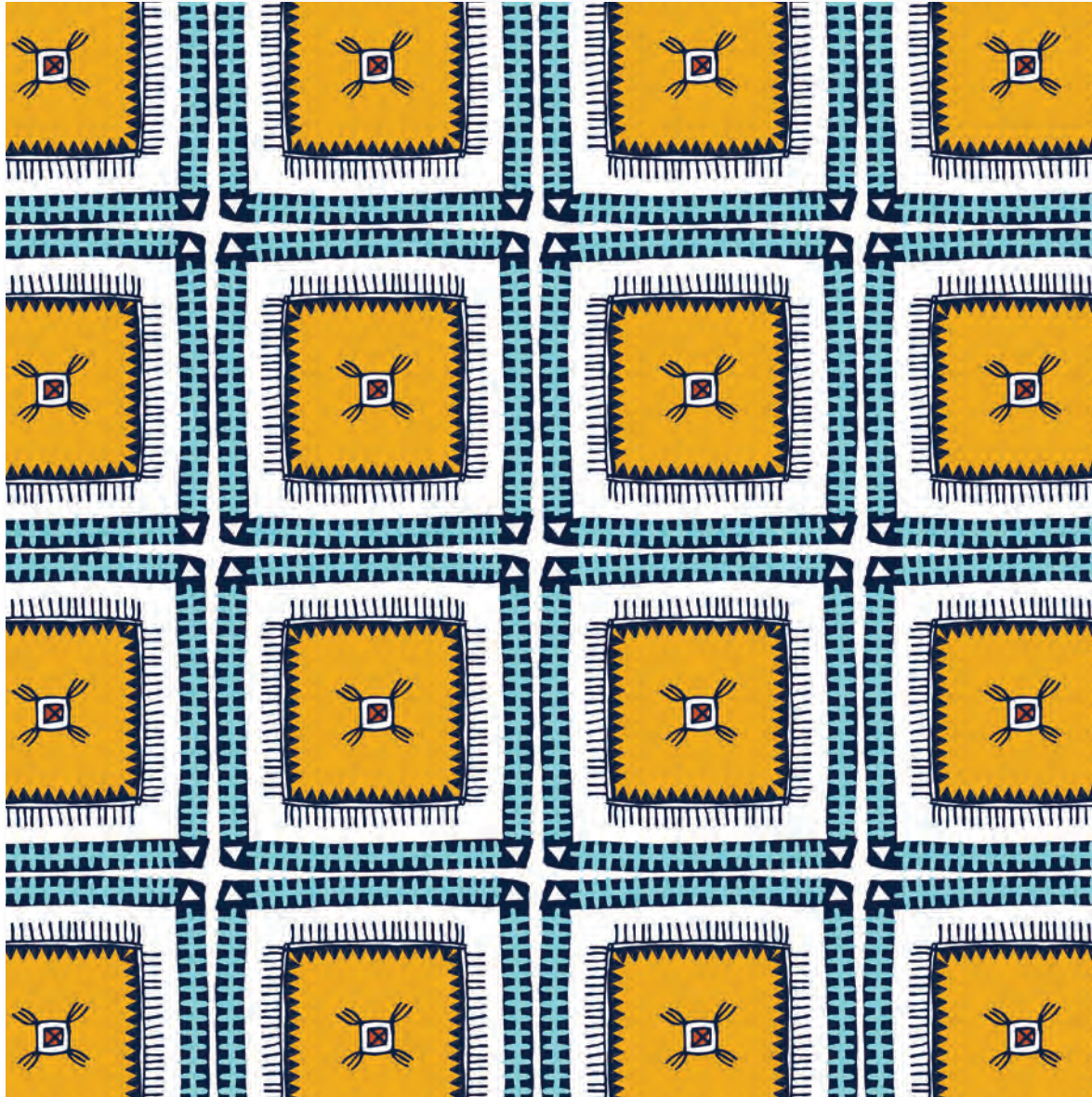
TWO-0102



GLOBAL ESSENCE



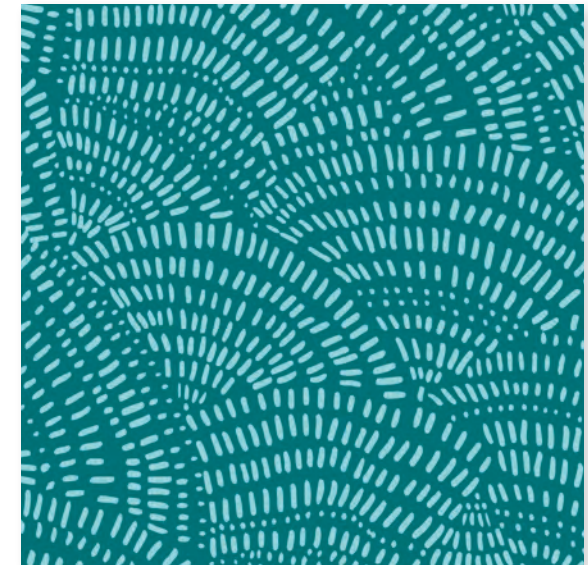
TWO-0062



TWO-0043



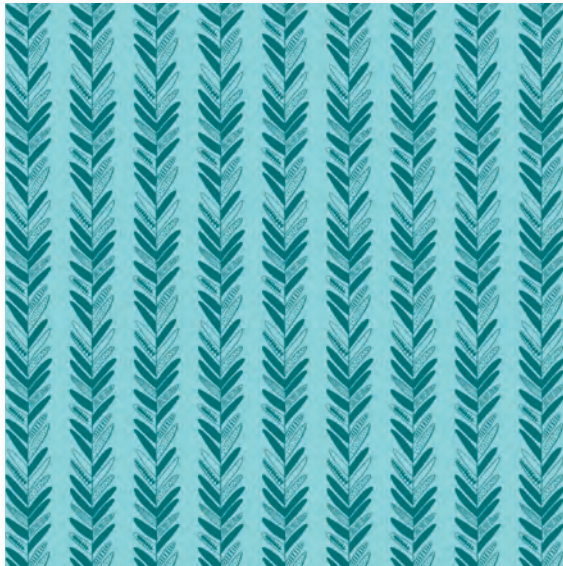
TWO-0067



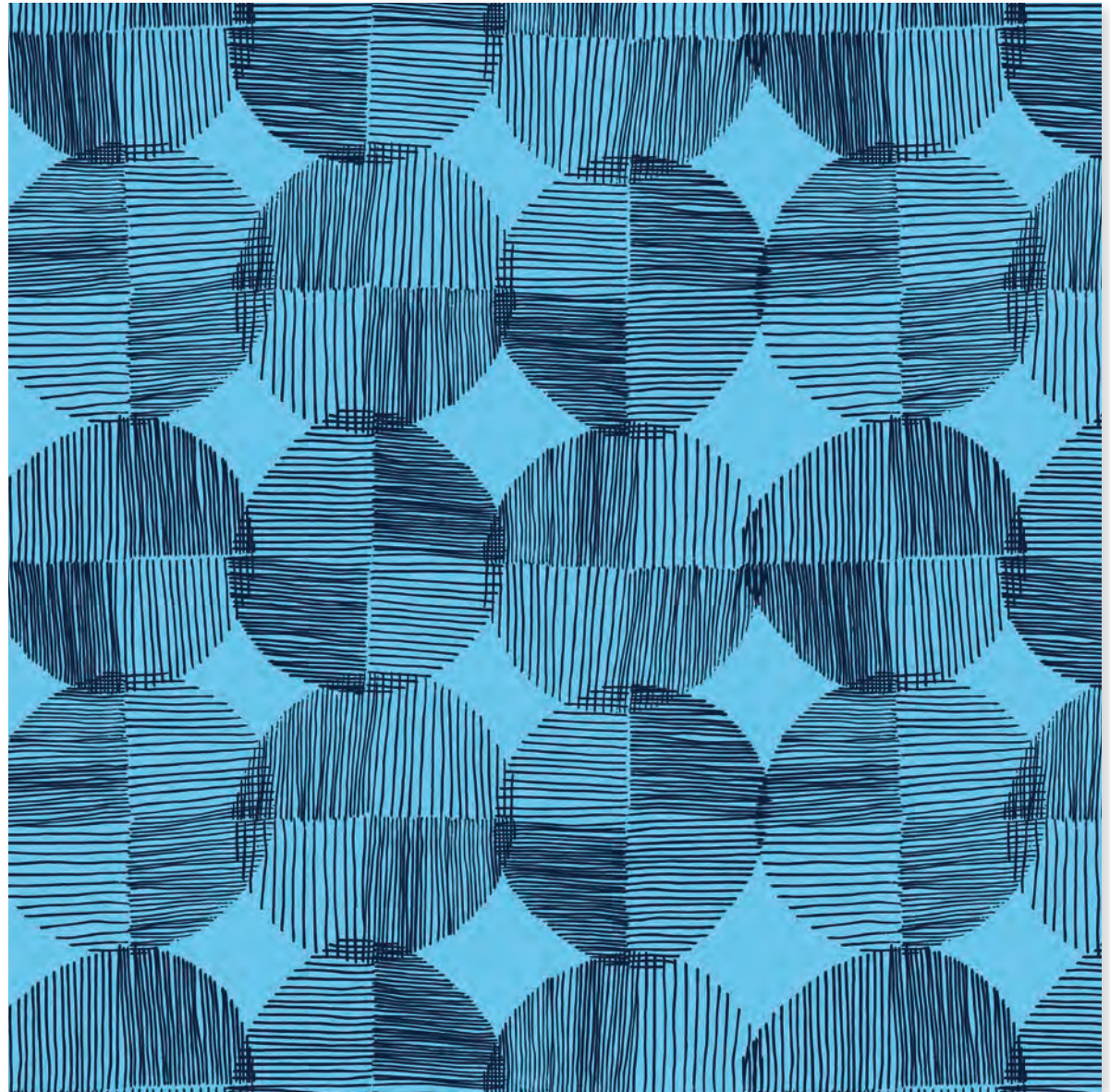
GLOBAL ESSENCE



TWO-0049



TWO-0046



TWO-0065



GLOBAL ESSENCE

TWO-0063b

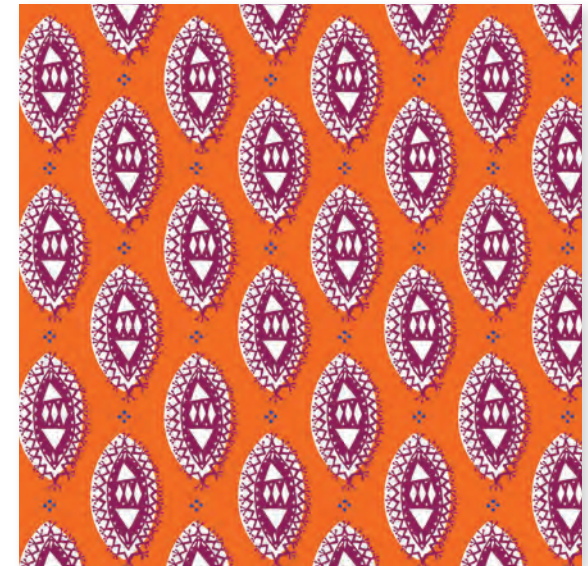


Two IF BY *Sea*
STUDIOS, LLC

TWO-0052



TWO-0066b



**wain's
WORLD**

©TWO IF BY SEA STUDIOS, LLC 2019 • REPRESENTED BY WAIN'S WORLD • PH 312.848.8563 • LIZWAIN@LIZWAIN.COM

ABOUT BRITTANY

Brittany Zeller-Holland hails from Michigan's Upper Peninsula and much of her spirit stems from an upbringing that embraced nature, creativity and travel. As the paintbrush behind her business, Two if by Sea Studios, Brittany has been creating surface pattern and product designs for companies all over the world for 13 years!

In 2018 her business grew and evolved alongside her heart with much of her time being dedicated to her baby, Roald.

Aspiring to send authentic designs into the universe, Brittany has most recently been relishing in collaboration, wandering wooded trails and wholehearted relationships built creative communities both in her home state of Michigan and her new residence in North Carolina.



PARTNERSHIPS

Evergreen
Chasing Paper
Thirstystone
Demdaco
Eccolo
Artissimo
Creative Bath

Current
Nordstroms
Minted
Uncommon Goods
Elli
KAF Home
Rock Your Baby

**wain's
world**

REPRESENTED BY WAIN'S WORLD
PH 312.848.8563 • LIZWAIN@LIZWAIN.COM