



EttaVee

BRINGING COLOR TO LIFE!

@ETTAVEE



Leisure Arts



Tervis



Target



ABOUT THE BRAND

Hello Color!

Created by international artist, Jessi Raulet, EttaVee has become well-known for its distinct hand-painted, colorful and bold designs. The American born, France-based artist has an engaged and rapidly growing social media following of 119k+ fans garnering the attention of various media outlets including features on Good Morning America, Essence Magazine, PopSugar and Success Magazine.

Since its launch in 2014, EttaVee has become a lifestyle brand that expresses optimism and joy through color. EttaVee's cheerful designs have been featured on home decor, stationery, tech accessories, textiles and apparel. EttaVee has collaborated with Target, Pottery Barn Kids & Teen, Anthropologie, Tervis, Erin Condren, Jiggy Puzzles, Sally Hansen, Crayola, Mead Cambridge, Lang, Papyrus, Hallmark, Rollie and more. Products can be found at: Target, Barnes & Noble, Pottery Barn Kids, Anthropologie, Nordstrom, Homegoods and more.

OPTIMISTIC / COLORFUL / UPLIFTING / MILLENNIAL / BRIGHT



ETTAVEE AT A GLANCE

COLLABORATIONS

TARGET
CLINIQUE
POTTERY BARN KIDS, TEEN & BABY
ANTHROPOLOGIE
MEAD CAMBRIDGE
TERVIS
ERIN CONDREN
TJMAXX

PARTNERSHIPS

SALLY HANSEN
CRAYOLA
BLURB BOOKS
AIRBNB
SWATCH

SOCIAL MEDIA

119K+
ENGAGED
FOLLOWERS

PRESS

ESSENCE
SUCCESS MAGAZINE PODCAST
POPSUGAR
GOOD MORNING AMERICA
MILK MAGAZINE KOREA
FLOW MAGAZINE (FRANCE)
CREATIVE EYE (AUSTRALIA)



ABOUT JESSI

Born and raised in Indiana, Jessi began her love affair with color at the age of four and has been creating ever since. She moved to San Francisco where she worked as an art director in advertising for top Bay Area clients. In 2013, she moved to Paris for love where she started creating colorful fine art pieces and designs to brighten up her surroundings; and thus the vibrant world of EttaVee was born. Jessi is inspired by life in France, travel adventures and unexpected pops of color. She currently lives in Strasbourg, France with her husband and daughters.

FUN FACTS

COLLECTS:

PHOTOS OF COLORFUL DOORS

CURRENT FAVORITE COLORS:

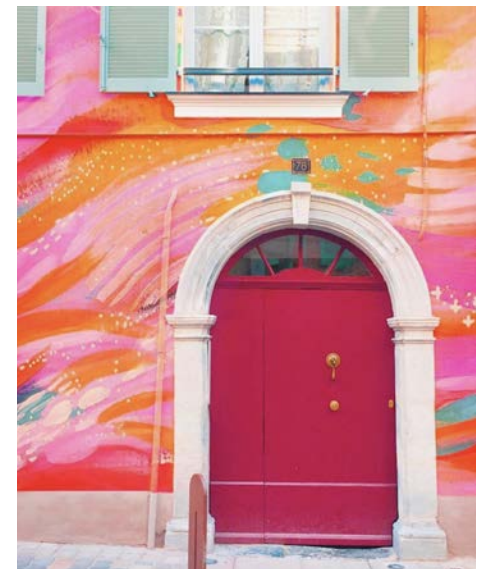
CORAL & METALLIC GOLD

LANGUAGES:

ENGLISH & FRENCH

FAVORITE PLACE:

37° 49' 11.744" N
122° 28' 41.718" W



SOCIAL MEDIA

OUR ENGAGED FOLLOWERS

MILLENNIALS

25-34

GENDER

95% WOMEN

5% MEN

TOP CITIES

NEW YORK

MELBOURNE

LONDON

SYDNEY

CHICAGO

TOP COUNTRIES

UNITED STATES

UNITED KINGDOM

AUSTRALIA

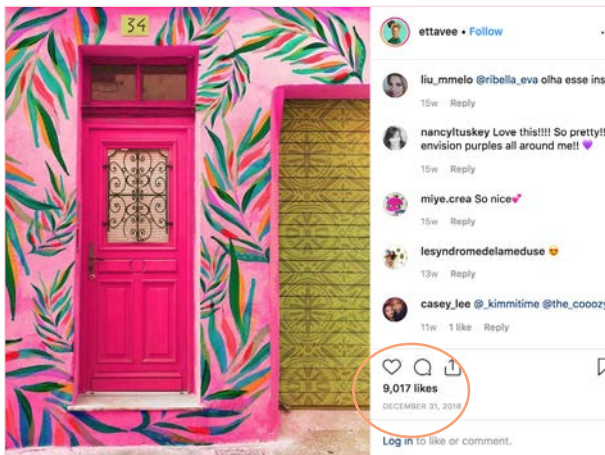
CANADA

ARGENTINA

THEY:

- LOVE **COLOR**
- ARE CREATIVE & CRAFTY
- LOVE TO TRAVEL
- TAKE JOY IN THE LITTLE THINGS

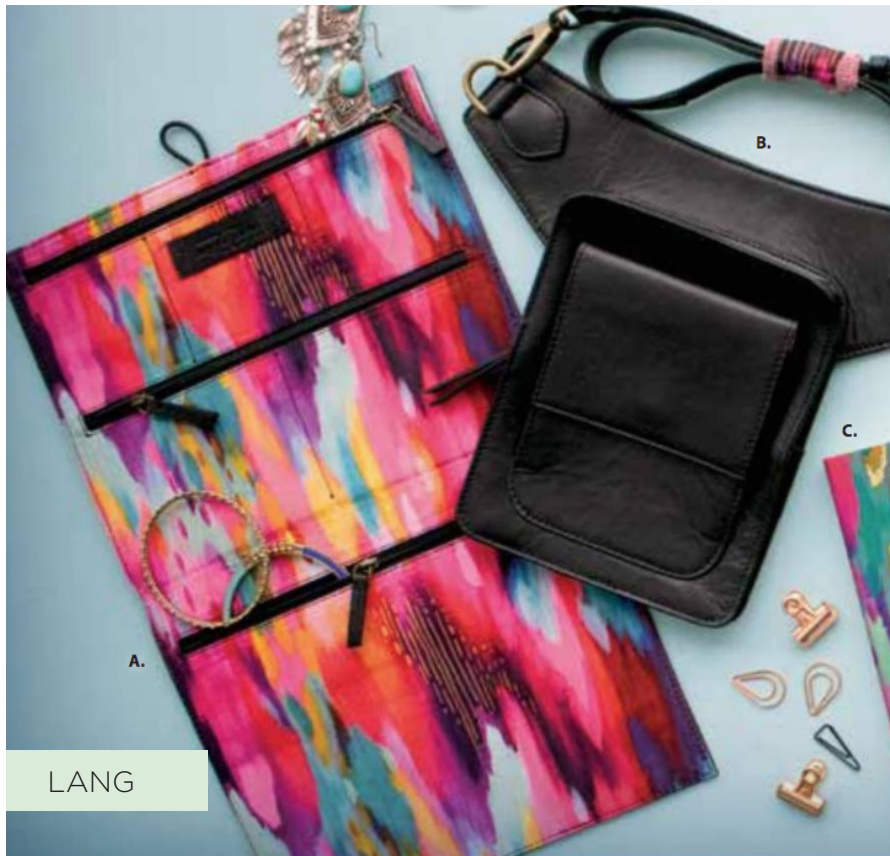
INSTAGRAM



119K+ ENGAGED FOLLOWERS
INSTAGRAM / FACEBOOK / TWITTER / PINTEREST

LET'S GET SOCIAL!

@ettavee



LANG



Ravensberger



Rollie x EttaVee



Pottery Barn Kids



COLLABORATIONS

Jessi has successfully collaborated with leading companies including;

Target, Clinique, Pottery Barn Kids (Teen & Baby), Anthropologie, Casetify, Hallmark, Erin Condren, Kate & Laurel, American Greetings, Better Day Books, Fit & Fresh, Izzy Wheels, CVS Health, Jiggy Puzzles, TJMAXX, Aimee Kestenberg, Kirkland's, Riley Blake Designs, LANG, Mead Cambridge, Tervis, ExpressionMed, Ravensberger, CEACO Mixbook and more.

pottery barn kids



ANTHROPOLOGIE

CLINIQUE



Kirkland's



PARTNERSHIPS

Jessi has also partnered with leading brands on social media campaign product launches including Clinique, Sally Hansen, Crayola, AirBnb and Swatch.

Sally Hansen

Crayola

swatch[®] 



CORPORATE CLIENTS

Jessi has also worked on national campaigns for leading brands including LinkedIn, San Francisco 49ers, Domino's Pizza and Yahoo to name a few.

Linked in



 **Domino's**

YAHOO!



PRESS

WEB

ESSENCE
SUCCESS MAGAZINE
APARTMENT THERAPY
POPSUGAR
FUBIZ
TARGET.COM

PRINT

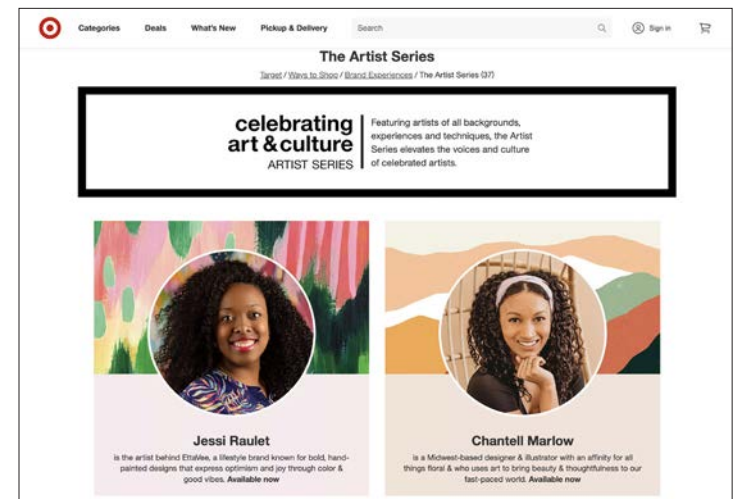
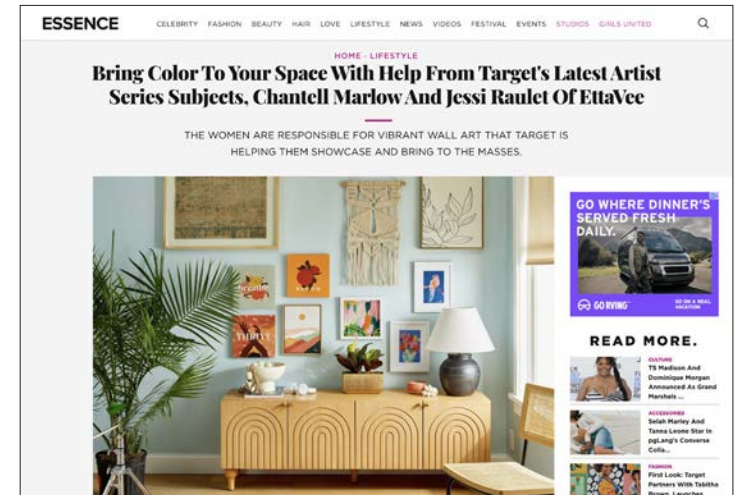
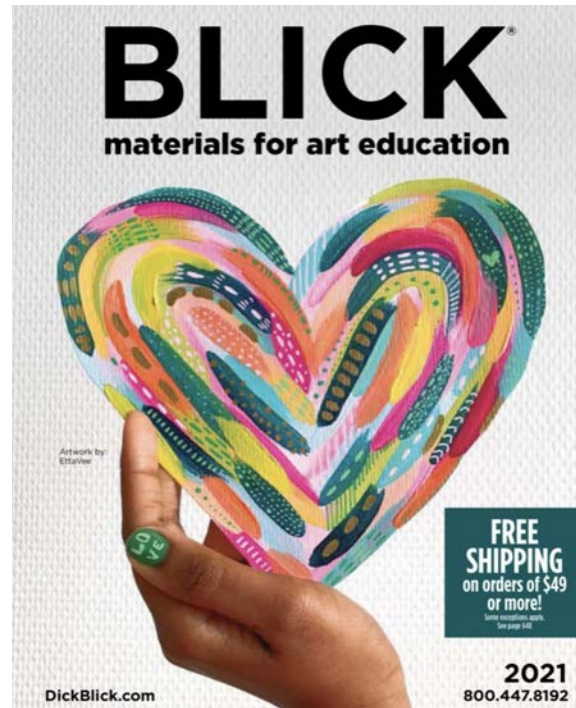
BLICK ART CATALOG COVER
FLOW MAGAZINE
MILK MAGAZINE KOREA
CREATIVE EYE MAG
CMYK MAGAZINE

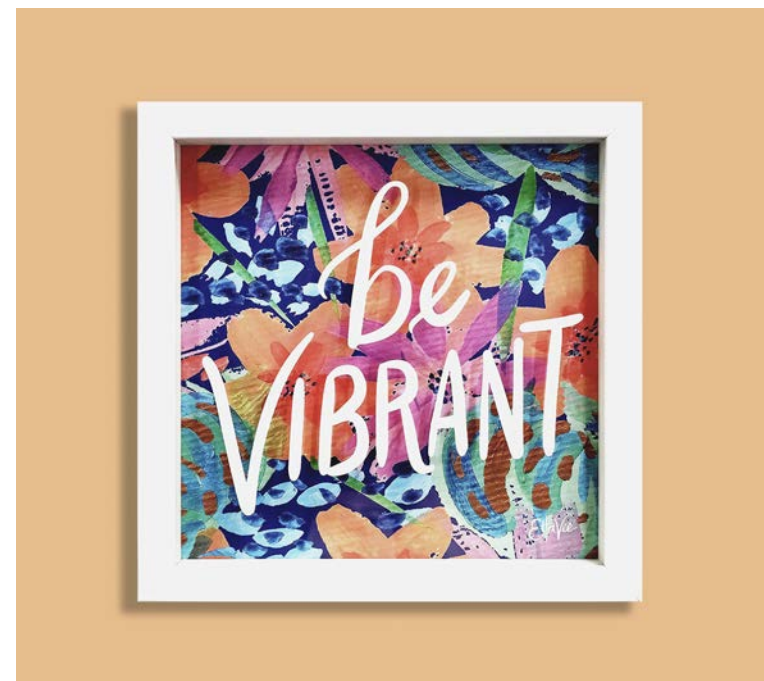
TV

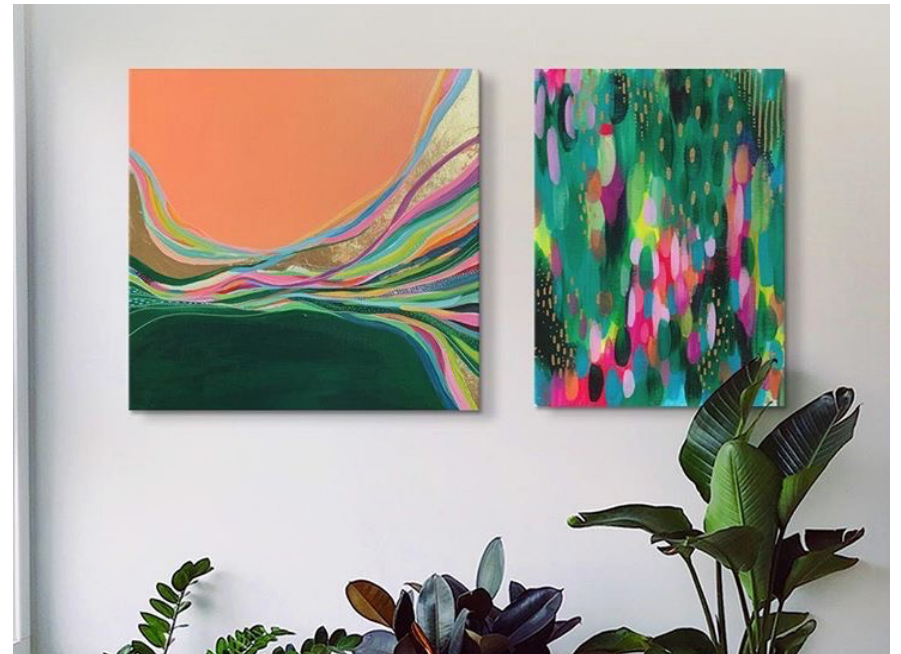
GOOD MORNING AMERICA
DANCING WITH THE STARS

SOCIAL MEDIA FEATURES

THE HUFFINGTON POST
PANTONE
DESIGN SPONGE







HAPPY WALLS *for* ALL





Pottery Barn Kids









CVS Health

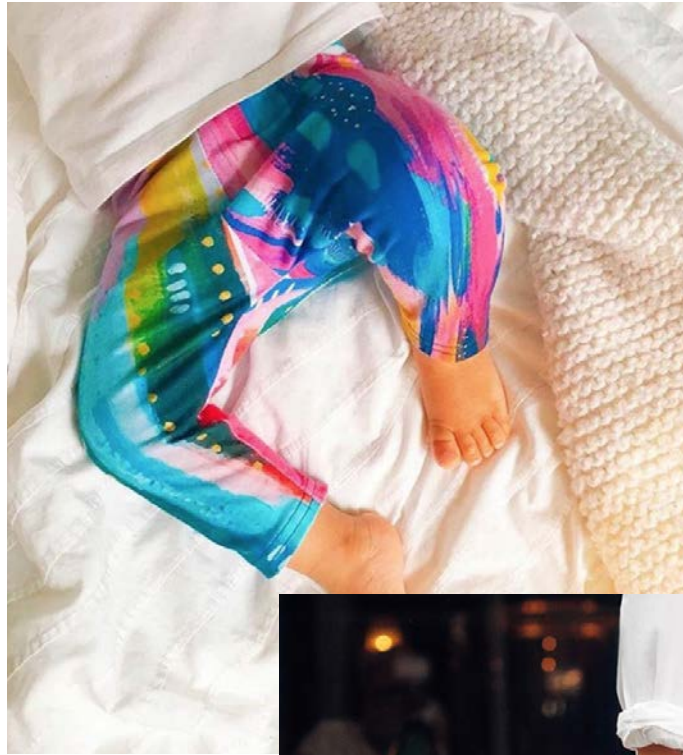


ExpressionMed



Izzy Wheels

HEALTH, but make it CUTE





ETTAVEE.COM
INSTAGRAM.COM/ETTAVEE
#ETTAVEE

CATEGORIES AVAILABLE FOR LICENSING:

APPAREL
FASHION ACCESSORIES
COSMETICS
STATIONERY
CALENDARS
GREETING CARDS

GIFT
TABLETOP
PUBLISHING
HOME TEXTILES
WALL DÉCOR
LUGGAGE

For licensing inquiries, please contact:

JEWEL BRANDING & LICENSING

BETH HOOKER
Beth@jewelbranding.com
901-619-7754

