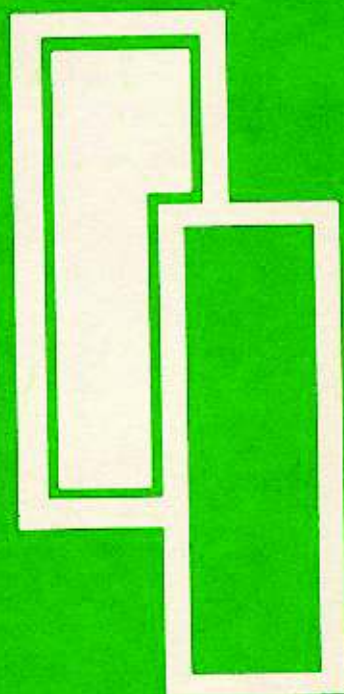


'68

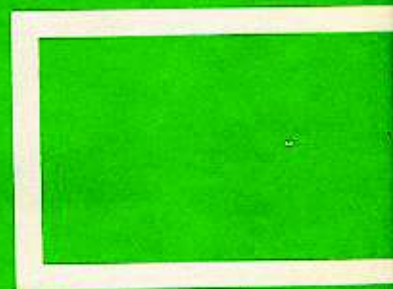
NÜRNBERG

MARVIN WILSON





68





68

Nurnberg American High School

Nurnberg, Germany

*the eagle's nest*

Ed Magiera, Editor



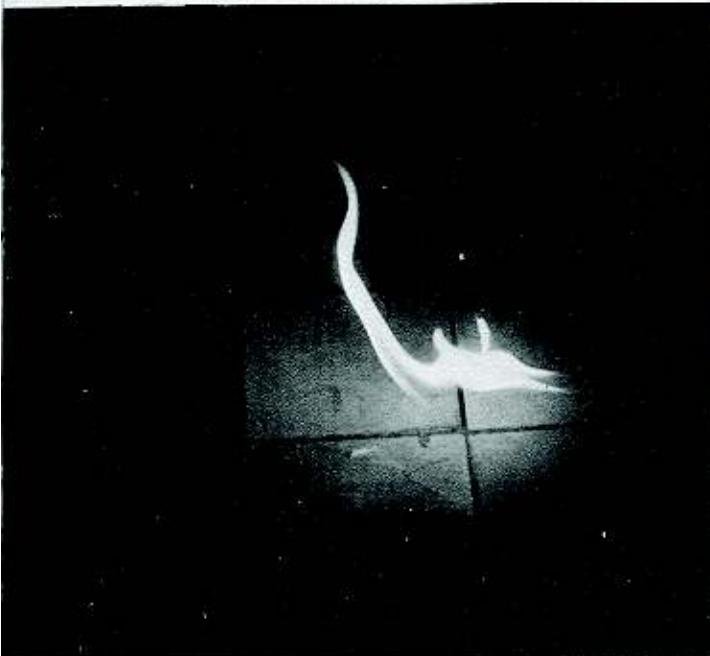


## *dedication*

We proudly dedicate this yearbook, the 1968 Eagles Nest, to Mrs. Norah Speck, and Mr. Donald Peterson, that through their services have created a more enjoyable learning atmosphere.











Mr. Luther C. Skelton

You live to-day to enjoy to-morrow. The enjoyment you experience in the future you determine by your accomplishments and the attitude you build to-day.

As you turn the pages of this Yearbook, we hope you feel a sense of pride and satisfaction for the role you played as a student in the Nurnberg American High School.

The staff of the Nurnberg American High School wishes for each of you the best that life may afford. We sincerely hope that your associations with us have been a source of inspiration and that we have been of assistance in preparing you for a rich and rewarding life.

Mr. Edward K. Cook  
Superintendent of Schools  
Districts V-VII-X







Karen Akins  
Math and Science



Claude Beavers  
Counselor



Dorothea Bents  
English and Music



Phyllis Berwick  
Art

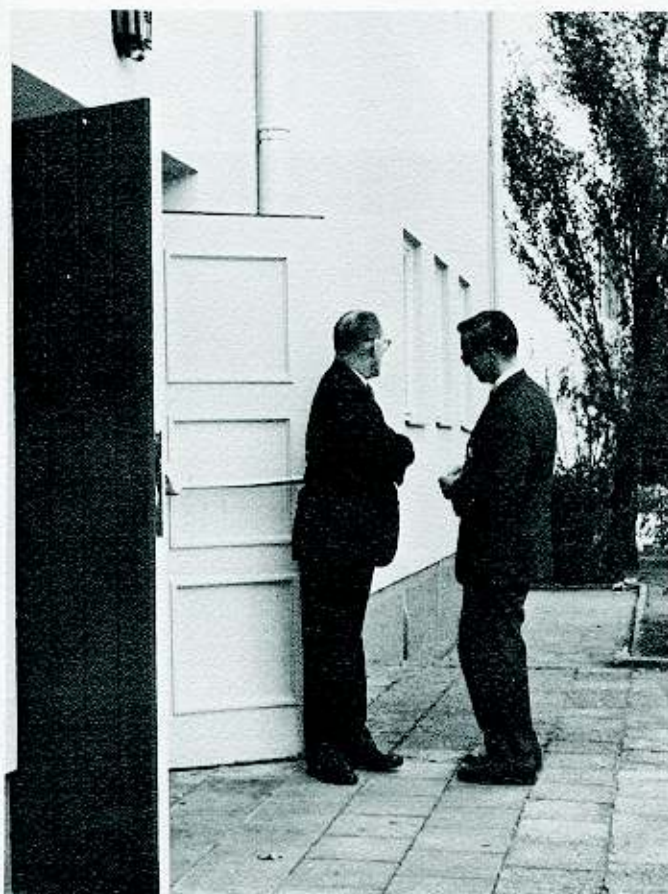


Cletus Campbell  
P.E.

## *faculty*



Virginia Cannon



Calvin Cornell  
Biology

Georgann Coffeen







Helen Crowell  
English



Jane Doherty



Anthony Grana  
Latin



Shelley Hutchinson  
French



Hans Jenssen  
Math







Erica Johannes  
Secretary



Nolan Kemper



Sally King  
Librarian



Werner Koschau  
German

Susy Kohlrausch  
Secretary







Helen Kramer  
Math & P.E.



Edith Kuhn  
Audio-Visual Aids



Bill May  
I.P.S.



Nancy McKinnon  
Typing



Ruby Numoto  
General Business



David Morgan  
Social Studies



James Nasser  
French &  
Spanish



Wayne Olson  
English

Bruce Oswalt







Mariann Porter  
Secretary



Smith Reeves  
Band & Music



Richard Ryan  
P.E.



Gerhard Schroeder  
Social Studies



Joseph Serino  
Art



Patrick Slattery  
Social Studies

John Fuller  
P.E.



Hildegard Vogt  
German

Leonora Thompson  
English







Heidemarie Wild  
Assistant-Librarian



Marvin Wilson  
Math

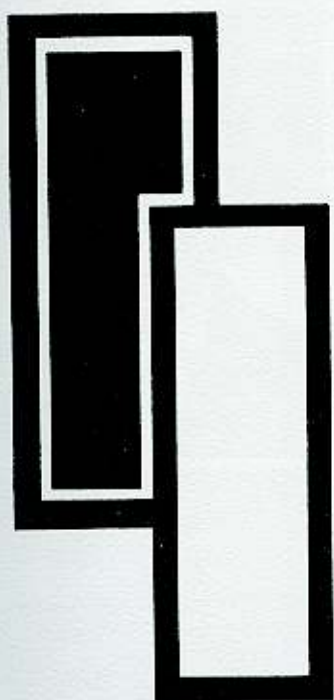


Emanuel Raab  
Social Studies



Diego Zuechetti  
Shop & Mechanical  
Drawing

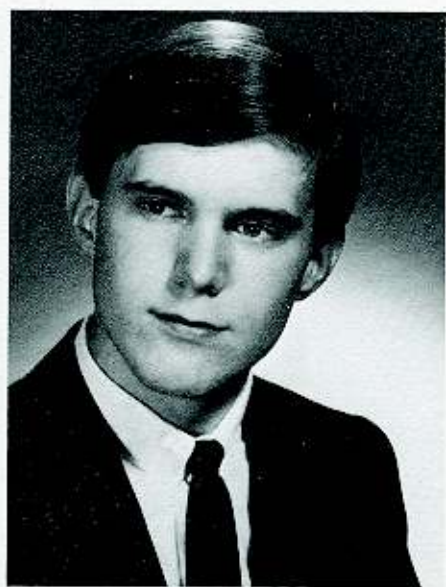




**68**

**SENIORS**





Douglas Hatt, President

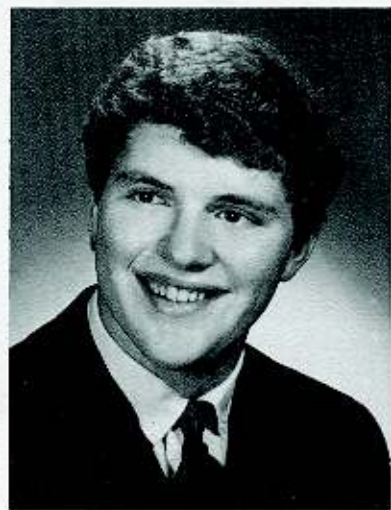
## *senior officers*



Jack Rose, Vice President



Patti Nunemaker, Secretary



Daniel Battaglino, Treasurer





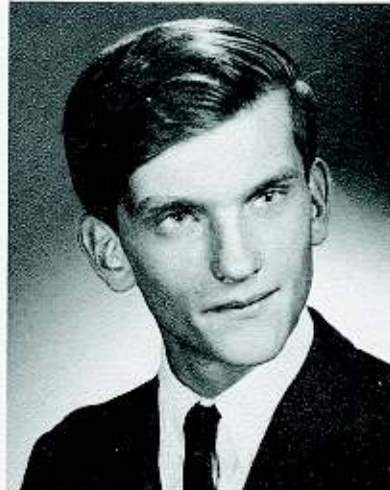
DIANE ANDERS



ELIZABETH BALDWIN



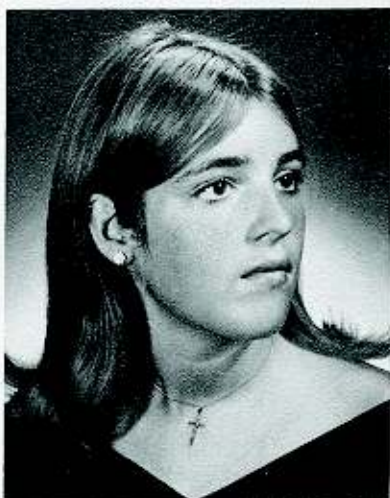
PETE BALLARD



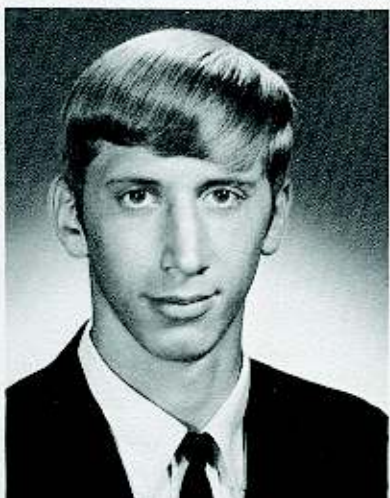
MIKE BALTICS



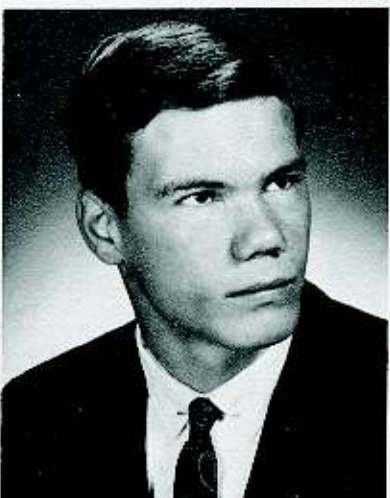
DEBRA BARRON



KATHY BATTAGLINO



LARRY BILON



ROBERT BILLINGS





MARGARET BLACK



BOB BLACKMON



ROBERT BLACKWELL



PAUL BLANKENSHIP



GISELA BLUEMEL



GREG BOY



FREDA BRALEY



MARGO BREEDON

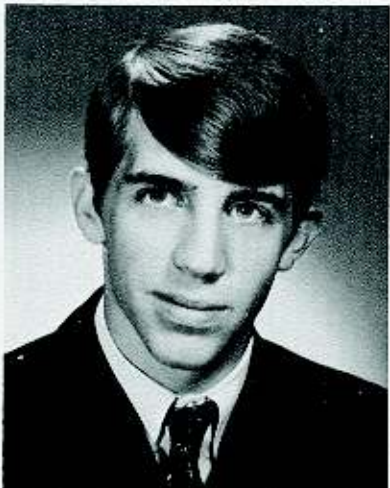




ROSETTA BROWN



SONNY BRYANT



FRANK BURGESS



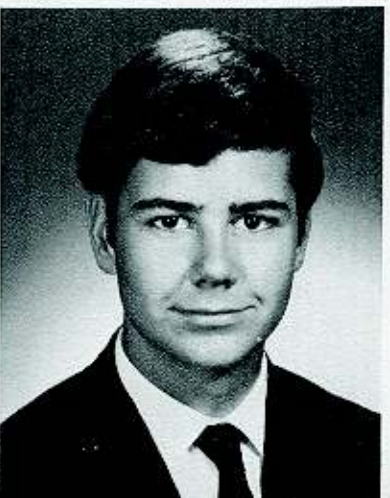
MANUAL CAMPOS



BRUCE CAPPS



JAMES CHIAROTTINO



STEVE CLEMENS



JOE COZAD





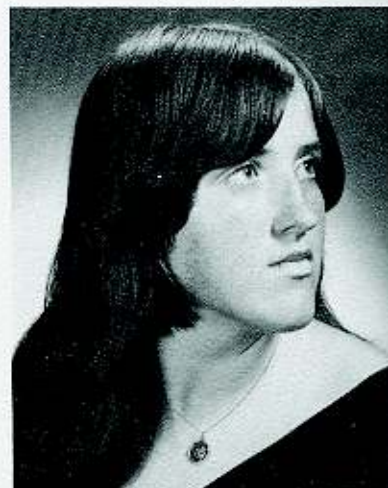
ANNE DANIEL



WILLIAM CRAIG



LYNNE CROWE



LOTTE DARLING



ROSEMARY ELLEFSON



SHIRLEY ELLISON



LOUIS EMORY



FRANCOIS FERGUSON





JOHN FOSTER



JUDI FULLERTON



GERALD GAN



SONIA GELABERT



MIMI GLOVER



HOMER GREEN



LLOYD GUCCIONE



HONEY GUY





TAMMIE HAUSER



CATHERINE HAYWARD



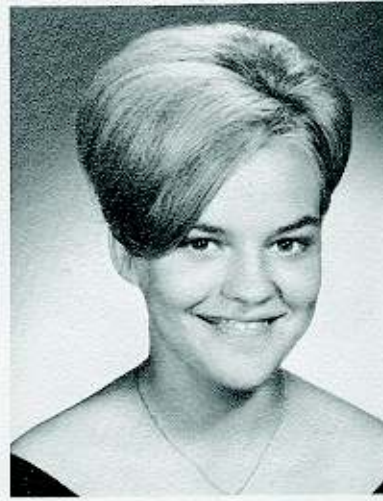
MIKE HEFFNER



ROGER HENDRIX



CHRISTEL HIECKE



SUSANNE HOLDING



CARLINE HYDE



CHARLES JENCKS





TRUDI JOHNSON



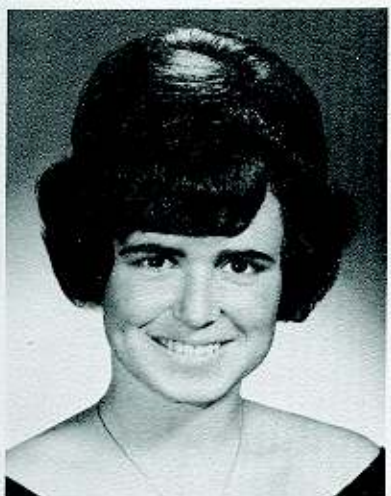
DONALD JONES



LOUISE KANG



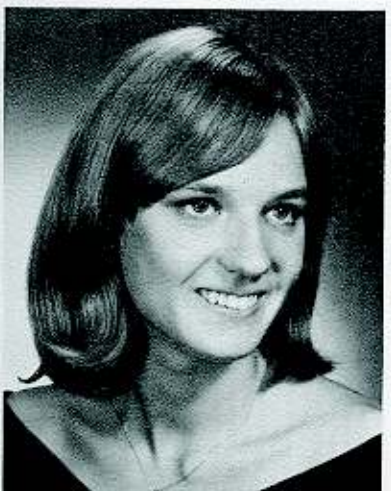
RICHARD KELLY



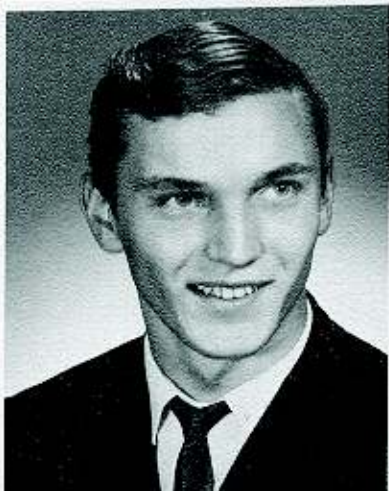
PAT KELLY



RICHARD KIRBY



BARBARA KNIZNER



GEORGE KUHLMAN





MARG MCGUIRE



DONALD MCINTOSH



MARY MEEKS



BUTCH MARTIN



MARVIN MCKINNIE



KIRK MAYS



BRUCE McDONALD



EDWARD MAGIER





JON MOHOLY



TRACY MCAULIFFE



DIANE MOTOGAWA



MARLENE MORT



WILFRED MEDINA



LESLIE MCCALLISTER



JAMES PADGETT



ROSEMARIE PALMER





JILL PETERSON



TOM POND



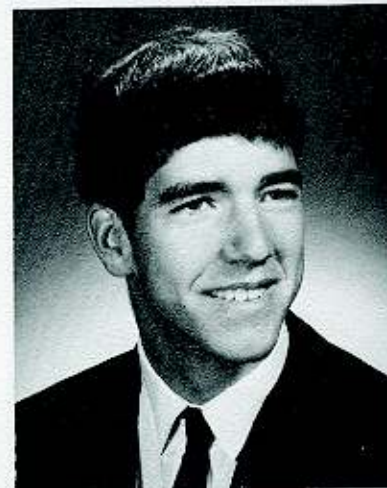
ERIC RIEDL



GWENDOLYN ROBINSON



GERALD RODRIGAEZ



GENE ROGERS



PEGGY SCHUL



LIZ SHELTON





JUDY SMITH



DONNA M. SMITH



EARL SOLOMON



LINDA SORBO



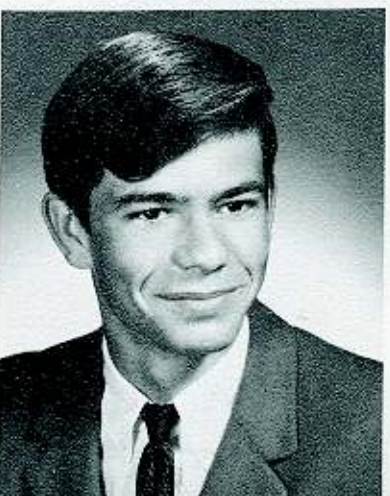
JOHN SPANH



HELEN STEARNS



KAREN SURRATT



WILLIAM TUCKER





RAINER VALITZKI



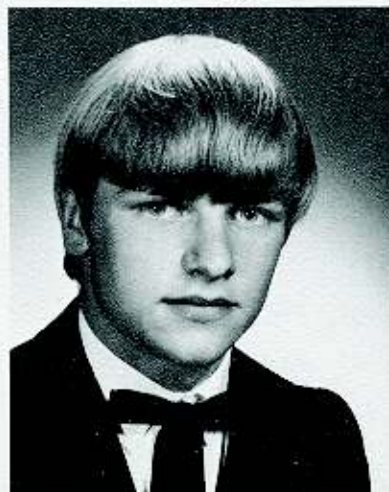
CHARLES VANCE



WILLIAM WADE



DIANA WATKINS



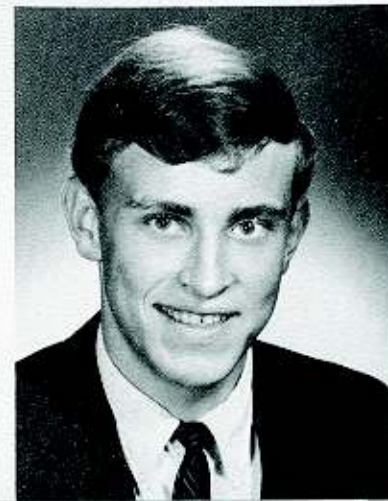
RALPH WEIERICK



WILLIAM WENTZELL



KATHY WICKLINE



DANIEL YOUNG





## *senior superlatives*

Doug Hatt, Mr. Senior



Trudi Johnson, Miss Senior





MOST LIKELY TO SUCCEED  
Anne Daniels & Bub Emory

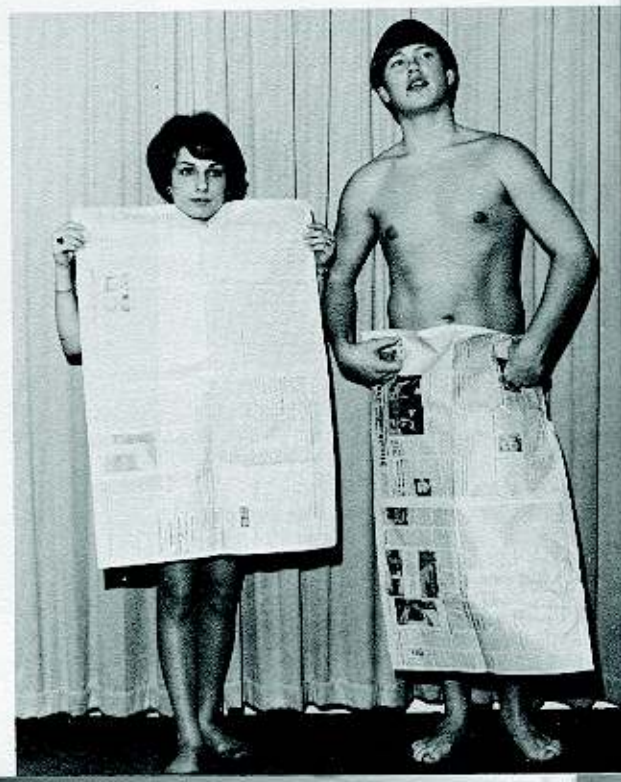


MOST SCHOOL SPIRITED  
Liz Baldwin & Dan Young

MOST ATHLETIC  
Honey Guy & Jack Rose



BEST DRESSED  
Tracy McAuliffe & Bill Wade







✓  
MOST FRIENDLY  
Patty Nunemaker & Tom Pond



SHYEST  
Marge McGuire & Jim Padgett

MOST TALKATIVE  
Judi Fullerton & Greg Boy



CLASS CLOWNS  
Kathy Wickline & Mike Baltes





# Senior Activities

Diana Anders — Home Economics 9th, 10th; G.A.A. 11th  
 Peter Ballard — Football 10th; Basketball 10th, 11th, 12th; Captain 11th, 12th; Track 11th  
 Mike Baltes — Basketball 9th, 10th  
 Debbi Barron — Student Council 9th; Tennis Club 9th; Drama Club 10th; Home Economics 10th; Yearbook 12th  
 Dan Battaglino — Track 10th; Drama 12th; Treasurer 12th  
 Kathy Battaglino — G.A.A. 9th, 11th  
 Larry Bilon — Class Council 11th; Track 11th, 12th; Basketball 11th, 12th; co-captain 12th  
 Margaret Black — FHA 9th; City Activities Council 10th; Future Business leaders of America 11th  
 Bob Blackmon — Football 9th, 10th, 11th, 12th; Soccer 10th, 12th; School Newspaper 11th; Lettermen's Club  
 Robert Blackwell — Chess Club 10th, 11th; German-American Club 10th, 11th; Football 11th, 12th; Soccer 12th  
 Gisela Bluemel — FHA 9th; 4-H 9th; Tri-Hi-Wy 9th; Beta Club 9th  
 Freda Braley — Jr. Red Cross 9th; Varsity Hockey 9th; Business Club 11th; Chorus 12th  
 Margo Breeden — Cheerleader 9th; Majorette 11th, 12th; Pep Club 12th; Pep Club Secretary  
 Rosetta Brown — G.A.A. 12th; Pep Club 12th; Chorus 12th; Homecoming Queen 1968  
 Frank Burgess — Wrestling 9th, 10th, 11th, 12th; Ski Club 10th; Baseball 11th; Soccer 11th; Drama Club 10th, 11th, 12th; Drama President 12th  
 Samuel Burton — Football; Track; Basketball  
 Manuel Campos — Football 9th; Band 9th, 10th; Pep Club Wrestling 11th  
 Bruce Capps — Track 9th, 10th; Football 9th, 10th, 11th, 12th

Jim Chiarottino — Class Representative 9th, 10th; Basketball 9th, 10th; Football 9th, 10th, 11th, 12th; Lettermen's Club  
 Al Clark — Track 9th, 10th, 11th; Football 9th, 11th; Gymnastic 11th, 12th; Lettermen's Club  
 Steve Clemens — Chess Club 10th; Football 11th; National Honor Society 11th, 12th; Forum, Debate 12th; Drama 12th; Student Council 12th  
 Joe Cozad — Chess Club 12th; Tennis 12th  
 Bill Craig — Swimming Team 9th; Track 9th, 10th, 11th, 12th (Captain); Wrestling 11th, 12th; Golf 12th; Chess Club 10th, 11th; Lab Asst. 11th, 12th  
 Ann Daniel — Beta Club 11th; Annual 11th; Forum 12th; Student Council 9th, 10th, 12th  
 Lotte Darling — German-American Club 9th, 10th, 11th (Pres.)  
 Evan Doucette — Art Club 9th; Football 9th, 10th, 11th; Baseball 10th; Basketball 11th, 12th  
 Rosemary Ellefson — Annual 9th; Drama 9th, 11th; G.A.A. 10th; Spanish Club 10th, 11th; F.T.A. 11th; Debate 11th; Track 11th  
 Shirley Ellison — Newspaper 10th; Volleyball 10th; German-American Club 10th; Chorus 9th; Girls' Glee Club 10th, 11th; G.A.A. 11th; Basketball 11th  
 Louis Emory — Basketball 9th, 10th; Football 9th, 10th; Track 9th, 10th; F.T.A. 10th; Baseball 9th, 10th; Tennis 11th, 12th; Drama 11th, 12th; President 9th, 10th, 11th; Student Council 9th, 10th, 12th; Council President 12th  
 John Foster — Football 9th, 10th, 11th, 12th; Basketball 9th, 10th, 11th, 12th; Baseball 10th, 11th; Chorus 11th, 12th  
 Judi Fullerton — French Club 9th; Newspaper 11th; Annual 12th; Senior Council 12th; Dorm Council 11th, 12th



Gerald Gan — Newspaper 9th; Jr. National Rifle Assn. 10th; California Scholastic Federation 11th; Chess Club 12th; Debate, Forum 12th; Wrestling 12th

Mimi Glover — Student Council 11th, 12th; Senior Class Representative

Homer Green — National Rifle Association

Greg Boy — Skateboard Club 9th; Baseball 10th; Art Club 11th; Golf 12th; Basketball 12th; Track 12th

Honey Guy — Band 9th, 10th, 11th; G.A.A. 9th, 10th, 11th; Hi Y 9th, 10th; Girls' Track Team 9th, 10th; Stage Band 9th, 10th, 11th; Band Pres. 9th, V.P. Band 10th; Student Council Rep. 9th, 10th

Doug Hatt — Football 9th, 10th; Water Polo 9th; Basketball 9th, 10th, 12th; Track 9th, 10th; Student Council 9th, 10th, 11th; Speech and Debate Club 9th; Drama Club 9th, 10th; Pep Club 12th; Spanish Club 9th, 10th; Chess Club 11th; Baseball 10th; Marching Band 9th, 10th; Senior Class Pres.; Vice-pres. of Student Council 10th; Pres. of Spanish Club 10th; Capt. of Baseball Team 10th.

Tammie Hauser — Dorm Council Rep. 11th; Tennis Club 9th; Student Council Rep. 9th

Catherine Hayward — 4-H Club 9th; Band 9th; Choir 10th, 11th; Softball 9th; Basketball 9th; 4-H Club Pres.

Michael L. Heffner — Football 12th

Roger Hendrix — J. V. Football 9th; Shop Club 10th; Checkers Club 9th; Vice-pres. Teen Club 9th

Charles Jencks — Football 12th; Newspaper Staff; German Club; Student Council; Parliamentarian; Football Captain 11th; Student Council Rep.

Trudi Johnson — Cheerleader 9th; Chorus 10th; G.A.A. Vice-pres. 11th; Pep Club Treasurer 12th; Senior Class Rep.

Don Jones — Football 10th

Louise Kang — German-American Club 9th, 10th, 11th; G.A.A. 9th; G.A.A. Treasurer 9th

Patricia Kelly — Student Government 11th, 12th; Senior Class Rep. 12th; Cheerleading 9th, 10th, 11th, 12th; Cheerleading Captain 9th

Richard Kirby — Football 9th; Swimming 10, 11th; Rifle Club 9th, 10th, 11th; Drama; Wrestling 12th; Drama Pres.

George Kuhlman — Drama, Glee Club 9th; Photo Club 10th; Debate Club 11th, 12th; Student Council Rep. 9th; Vice-pres. 9th; Vice-pres. Photo Club 10th; Junior Class Rep.

Thomas Lilly — Football 9th, 10th, 11th, 12th; Basketball 9th, 10th; Track 9th, 10th; Chorus; Boy's Glee; Madrigals

Ed Magiera — Marching Band 10th, 11th, 12th; Senior Band 10th, 11th, 12th; Orchestra 11th; Stage Band 10th, 11th, 12th; German Club 10th, 11th; Photo Club 10th, 11th; Tennis Team 11th; Science Club 11th; Yearbook 12th; Band Assistance 12th; Editor of Yearbook 12th; Vice-pres. of Photo Club 11th

Butch Martin — Junior ROTC 10th, 11th; French Club 9th; Rocket Club 9th; Delta Sigma Tau Fraternity 11th, 12th; Social Studies Forum 12th

Kirk Mays — Latin Club 9th, 10th; Chess Club 10th, 11th; Basketball 9th; Debate Club 12th; Dorm Council 12th

Tracy McAuliffe — Latin Club 9th; Spanish Club 11th; Biology Club 10th; Student Council Rep. 10th

Mickie McCallister — Newspaper 11th, 12th; Golf 11th, 12th; Pep Club 10th, 11th, 12th; Drama 10th; Franco-American Club 10th

Bruce McDonald — Track 11th

Donald McIntosh — Football 10th, 11th, 12th; Track 11th, 12th

Marg McGuire — FNA; Pep Club 9th; Freshman Demas; Sophomore Demas; French Club 9th, 10th; Junior Board; Soph. Board

Marvin McKinnie — Chorus 9th, 12th; French Club 11th

Willie Medina — Track 9th; Baseball 10th; Chorus 12th

Mary Meeks — Yearbook 12th; Madrigals 12th; Chorus 9th, 10th, 11th, 12th; Powder Puff Football 10th, 11th; FHA 9th, 10th

Chuck Melick — Audio Visual Club 10th, 11th; German-American 10th



Jon Moholy — Football 9th, 10th, 11th, 12th; Track 9th, 10th; Wrestling 10th, 11th, 12th; NHS 11th, 12th; Letterman's Club 10th, 11th, 12th; Yearbook 11th; Senior Council; Student Council 10th, 12th; Vice-pres. NHS; Captain of Wrestling; Most Valuable Player of Wrestling

Marlene Mort — Pep Club 12th; Chorus 12th

Patricia Nunemaker — FHA 9th; Student Council 9th; Pep Club 11th; Junior Council; Senior Class Secretary

Jim Padgett — Football 10th, 11th; Student Council Rep. 9th

Rosemarie Palmer — Scientist's Club 9th; Red Cross Club 11th; Homemaking Club 10th; Economics Club 10th

Jill Peterson — Pep Club 9th; Cheerleading 10th, 11th; Tennis 11th, 12th; Chorus 10th, 11th; Drama 12th; Freshman Class Secretary; Drama Club Sec.

Tom Pond — French Club 9th; Chess 10th; Drama 10th; Debate 11th, 12th; Pep Club 12th; Marching Band 9th, 12th; Student Council 12th; Senior Council; Student Council Treasurer 12th

Steven Pue — Cross Country 9th, 10th, 11th; Baseball 10th, 11th; Track 9th

Robert Rhall — NHS 9th; Chemistry Club 9th, 10th; Photo Club 10th; ROTC 11th; German Club 9th, 10th; Chemistry Club Pres.; Treasurer of NHS; Student Council 9th

Eric Riedl — ROTC 10th; Drill Team 11th; Debate 12th; Drama 12th; Forum 12th

Gwendolyn Robinson — Chorus 10th, 11th, 12th; Basketball 10th, 11th; Library Assistant 9th, 10th; Spanish Club Sec. 11th; Home Ec. Treasurer 10th

Gerald Rodriguez — Wrestling 10th, 12th

Jack Rose — Football 9th, 10th, 11th, 12th; Wrestling 10th, 11th, 12th; Yearbook 11th; Latin NHS 9th; NHS 11th, 12th; Letterman's Club 11th, 12th; NHS President 12th; Captain Wrestling Team 11th, 12th; Football Captain 12th

Peg Schul — German Club 9th; Red Cross Club 10th

Judy Smith — Pep Club 11th, 12th; Yearbook 11th; Chorus 10th, 11th; Powder Puff 10th, 11th, 12th; Phi Sigma 11th, 12th

Earl Solomon — Speech and Drama 9th; Track 10th, 11th, 12th; Football 11th, 12th; Wrestling 12th; Visual Aids Club 9th, 10th

Linda Sorbo — Latin Club 10th; Spanish Club 11th; NHS 11th; Jr.-Senior Prom Committee 11th; Miss FHS Lafayetteville Committee 11th; Latin Club Sec.

Bertram Spetzler — Football 9th, 10th; Basketball 9th, 10th; Tennis 9th, 10th, 11th, 12th; German Club 10th, 11th; Chess Club 11th, 12th; Advanced Math Club 10th; Letterman's Club 10th, 11th; Student Council 11th

John Sprank — Tennis; Basketball; Chess Club Forum; Debate Chess Club President 10th, 11th

Helen Stearns — Speech Club 9th; Pep Club 9th, 10th, 11th; AYA Vice-pres. 12th

Karen Surrat — FHA 9th; Needle Work and Handicraft 10th; AYA 10th; Pep Club 12th; Forum 12th; Senior Class Rep.; Captain of P. E. Basketball Team 12th

Bill Tucker — Football 12th

Charles Vance — Student Council 9th; Shop Club 10th; Football 11th

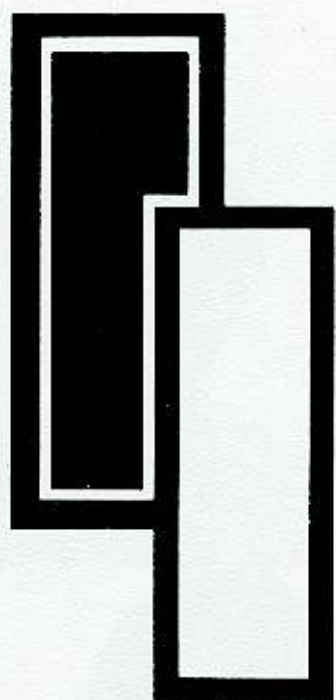
Bill Wade — Football 9th, 12th; Basketball 9th

Diana Watkins — Pep Club 9th; Library 9th; GAA; Rep. of Senior Class

Kathy Wickline — Pep Club 10th, 11th, 12th; Chorus 12th; Homemaking Club 10th, 11th; AYA 10th; Red Cross Vice-pres. 10th; German Club Vice-pres. 10th; Capt. of Soccer 11th

Dan Young — Football 10th; Chess Club 10th; Pep Club 10th, 11th, 12th; Pep Club Vice-pres. 11th; Pep Club Pres. 12th





71

---'70---'69

JUNIORS





president Edie Strenger

*junior  
class  
officers*



vice president Trish Mounts



secretary Charlene Bowser



treasurer Lucy Lindsey





Jim Albright



Brenda Alford



Anita Allran



Robert Avila



Linda Aycock



Pete Bales



Randy Barbrow



Preston Barker

Steve Basozki



Bob Berryhill



Linda Blanton



Robert Bowling







Bert Branstetter



Christa Braun



Sheron Brown



Doyle Bryant



Linda Burge



Rosanne Burns



Nettie Burton



Elke Byard

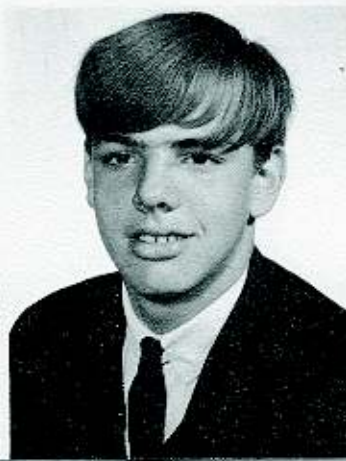
Phil Chalmers



Pete Christensen



Steve Christensen



Judy Collins







Mike Compton



Gina Curzi



Freeman Cooper



Konrad Darling



Ariel Deutch



Cynthia Dorne



Bill Dubnansky



Bruce Duffy

Joey Dunsmoor

Dan Duris

Mary Dwyer

Diane Eberhardt







Stephen Eiben



Barb Elchert



Luther Ellison



Debby Emerson



Carmen Flores



Klaus Folger



Jackie Fredrick



Johanna Geffert

Michael Gentry



Ted Glover



Dawn Goad



Richard Godfrey







James Greene



Marie Hagan



Karl Hammond



Debbie Harrison



L.C. Haynes



Frank Helton



Sherry Hensley



Hans Hess

Ron Hickenbottom



Donna Hinrichsen



Walter Holding



Ruth Hopson







Louie Hopson



Linda Houston



Casey Johnston



Claudia Joyner



Joe Kallage



Kent Kerr



Ingrid Koseki



John LaRocco

Susan Lawson



Freddie Lewis



Elke Lindsey



Pat Lively







Jeannie Love



Ralph Maldonado



Harry Mara



Anne Marshall



Martina Martin



Dolores Martinez



Barbara Massey



Susan May



Brian McDonald



Margaret McGrath



Marcos Medina



Barb Miller





Diane Moholy



Debbi Mullin



Jay Mowery



Brenda Murray



Trish Nedds



JaNell Nelson



Rocco Nelson



Bob Nicholson

Ken Osmond



Gail Padden



Sandra Payton



William Perkins







John Perkins



Pat Reagan



Donald Reed



Gay Reeder



Patrick Riley



Alane Rortina



Tony Roth



Nino Saenz

Frank Santillo



James Sauter



Sarah Savage



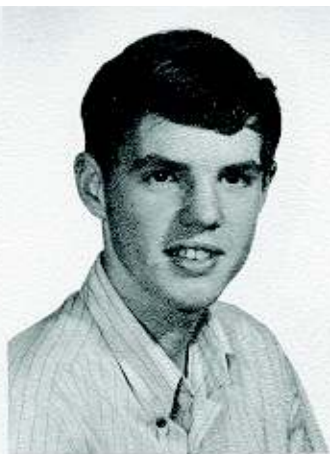
Cyndi Scott







Linda Shamray



John Smith



Bettina Snyder



Henrietta Sulton



Kathy Tharp



Maureen Thompson



Maria Torres



Jean Trent

Debby Trumper



Michele Walunt



Jim Ware



Ingrid White







Gwen Wickline



Odette Willis



Patricia Wilson



Billy Womble



Sandra Wright



Nick Yeatman



Tina Childers

Tony Jones



Janice Murphy











69 '70

SOPHOMORES





President Dwight Otto

*sophomore  
class  
officers*



Vice President Jody Breeden



Secretary Shelley Austin



Treasurer Sue Hatt





Karen Agorichas



Elwin Anderson



Bonnie Baraconi



Ella Barb



Ricky Barbrow



Linda Barker



Ralph  
Berthiaume



Jack Billings



Gary Blanton



Richard  
Bochniewicz



Chris Bowser



Gigi Boy



Debbie Brown



Pamela Brown



Walter Brown



Leroy Bryan





Myra Bryant



Diane Carter



John Carter



Ursula Cassium



Dalleen Churchill



Fred Clark



Patrick Clifford



Earl Collins



Michael Clovard



William Combs

Bob Copeland



Joseph Costa



Gay Cox



Beth Currie



Eleanora Curry



Ted Davis







Rob Demers



Georgiann  
Demetrakapulos



Maggie Diachynsky



Linda Diaz



Werner Davey



Michael Dunn



Joe Elchert



Gary Evett



Lynn Fendler



Quentin Foster

Harold Freeze



Linda Garner



Gerry Gallupe



Shannon Gentry



Deborah Gochel



Helal Gokalp







Debbie  
Gotthelf



Ken Gram



Dave Greene



Diane Hadley



Bennie Hall



Curtis  
Hardiman



Gwen Hassler



Debbie Haydon



Sally Hill



Glenn  
Hockaday

Billy Hodge



Herman  
Hoffman



Herbert  
Holton



Debbie  
Honeywell



Christine  
Hufnagel



Cindy  
Hundemer







Alfred Hunter



Ray Jenkins



Colleen  
Jewison



Theo Johnson



Harold Jones



Paul Jones



Virginia  
Kahl



Diana Kees



Foree Kirk



Carol Laakso

Susan Maas



John Magness



Chris McCurdy



Brenda  
McDonald



LeVerne  
McMillan



Pamela  
Merritt







Joe Messina



Margaret  
Millican



Cheryl  
Monuteaux



Tom Montellh



Rudy Morrow



Susan  
Mortimer



Greg Mounts



Jann Needles



Rick Nelson



Albert Nunley

David Oge



Mike Parker



Donald  
Patterson



Mike Pensyl



Patricia  
Perkins



Toni Phillips







Sylvia  
Pollock



Fred Pond



Alan Reger



Jerry Riley



Ray Robinson



Jim Rogers



Larry Rooke



Jeanie  
Rowland



Debbie Rubin



Stan Runnels

Starr Rutter



Ilona Ryles



Berna  
Sandling



Vernon  
Saunders



Kenny  
Schilling



Robert  
Schumann







Philip Shaw



Patricia  
Shipp



Bill Shubin



Amy Smith



Esther Smith



Laura Smith



Patricia  
Starbird



Wanda Stearns



Debra Stewart



William Stives

Mike Stockman



Lothar Stoltz



Mina  
Stringfellow



Michael  
Sullivan



Arthur  
Sulton



Leah Tatum







Roxanne  
Tatum



Charles E.  
Taylor



Charles H.  
Taylor



David Taylor



Renita Thamm



Eddy Townsend



Tony Triana



Carol Tucker



Stephen  
Tucker



Randy Turner

Jimmy  
Valitski



Althenia  
Vance



Paula Vargo



Cornelia  
Walte



Judy Warren



Wendi Welch







John Massey



Tony White



Bev White



John Wigg



Linda Will



Robert Wolfe



Marion Womble



Vicki Wright



Barbara Yencho



**F**  
**70**

**FRESHMAN**



*freshman  
class  
officers*



Barb Mara  
President



Marcia Van Vliet  
Vice President



Susie Scott  
Secretary



Sharon Vaughn  
Treasurer





Evelyn Abrecht, Karen Akana, Karen Armstrong, Linda Axelson, Joe Baker, Charlotte Baldwin



Leonard Baltimore, Barry Banks, Jessie Banks, Joyce Basozki, James Bearden, Roberta Belfox



Steve Bilon, Pat Blawis, Sue Borders, Betty Bowling, Barb Brennan, Lorna Brokenshire

Armor Brown, Sue Brown, Mike Bryant, Sybille Burgstaller, Linda Burch, Rene Burns







Billy Calfee, John Calfee, Barbara Campbell, Kevin Campbell, Marilina Capps, Shirley Chiddix



Dan Clark, Chris Clemens, Roland Cocker, Linda Colvard, Robert Crosby, Donna Crow



Mario Curzi, Curtis Dahle, Martha Daniel, Elizabeth Dawson, Charlyn Dean, Pauline Demetrakopulis

Wayne Dewhirst, Frank Dornik, Sonja Eisch, Jo Ann Faria, Dan Fendler, Baxter Fraser







Bettie Galvan, Beth-ann Gan, Renee Goessman, Devora Gordon, Laurel Gordon, Marilyn Green



Carla Gross, Ben Hassler, Garry Hardiman, Roland Hawkins, Benita Hayman, George Hernandez



Rick Hickenbottom, Lynda Hinrichsen, John Horton, Harold Hurst, Catherine James, Hollis Johnson



Melvin Jones, Pauline Jones, Bernard Joyner, John Kang, David King, Pete Krasen





Mike Lajoie, Anita Lee, Sheila Lee, Sue Lindsey, Sandra Mackey, Rosemarie MacPherson



Charles Mabry, Cathy Malcolm, John Mangan, Kristin Marma, Nilda Marti, Bill Martin



Dwayne Massey, Pat Matthauss, Harry Mazurek, Karin McCorkle, Debbie McLean, Steve McLean

Sandy McMurrey, Betsy Moritz, Susan Mruk, Karin Nieman, Debbie Nunemaker, John Padden







Steve Parker, Brenda Parr, Connie Parr, Joan Paszkowski, Tom Perkins, Jackie Peterson



Frank Phillips, Debbie Pickard, James Piselli, Dotty Pogue, Kathryn Pyles, Wanda Rawson



Don Reding, Robert Rees, Ricardo Reyes, Beth Reynolds, Robin Rickey, Kathy Sammon



Don Sanstrom, Robert Schliefer, Mimi Schilling, Gerald Schwarting, Kim Scott, Ken Shedden





Ralene Sidel, Douglas Smith, Susan Smith, Lydia Solomon, Rosie Soliz, Larry Spears



Vernon Spiller, Karen Strickland, Frances Stringer, Malcolm Surratt, Judi Taillon, Zeoma Tanaka

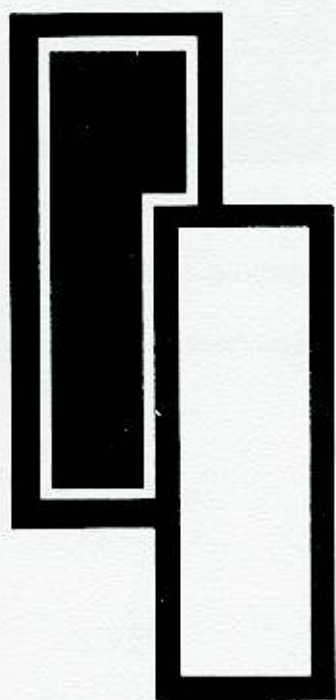


Marsha Teal, Mike Thompson, Joe Truman, Susan Ulery, Iris Walker, Christine Wall

Kenneth Watkins, Sharon Wedding, Dave White, Ingeborg Whitefoot, Richard Whysell, Pamela Zapf







JR. HIGH





ROW I: Aurea Almodovar, Daniel Ansbach, Jackie Babb, Vicki Baldwin, Mike Barker, Glenda Barnett, Jeffery Bass, Harold Bates

ROW II: Ametta Bellfol, Roger Blakely, Debbie Blunk, Diana Blunk, Mike Boulter, Rita Braley, Barb Branstetter, Edmund Brown

ROW III: Ralph Brown, Freda Buff, Ron Burgess, David Burke, Christina Campbell, Mark Charlton, Beth Cheek, Kathy Clark

ROW IV: Sylvester Clarke, Michael Coleman, Grisel Collazo, James Combs, Dieter Crago, Luanne Crawford, Gina DeFranza, Mary Dennis

ROW V: Alex Dinkins, Tony Distefano, Sandra Dorman, Karen Desmarais, Joanne Draleaus, Robert Draleaus, Maurice Dunn, Susan Ernest







ROW I: William Everett, Margot Ezell, Harold Faria, Rick Ferguson, Christine Fichtner, Gabriele France, Lyn Freeze, Billy Fuller

ROW II: Donies Gay, William Gill, Courtney Glover, Charles Goad, Donald Godfrey, Elizabeth Godwin, Harry Haynes, Mary Hendrickson

ROW III: John Higginbotham, Mary Hoar, Gerlinde Hoffman, Gary Hollis, Dale Hopkins, Nora Hoy, Gary James, Jimmy Jones

ROW IV: Robert Jones, Theresa Jones, Gabi Keefe, Donald Kees, John Kemp III, Tina Kerns, Lisa Kerr, James Kinder

ROW V: Ilona Klonsky, Kenneth Krasen, Anita Lajoie, Irene Lauser, Dale Lemoine, Cheryl Lewis, James Lewis, Dale Lindsey







ROW I: Carmen Lopez, Diane Luksa, Stephen Macemcy, David Marshello, Ana Marti, Paulette Michael, Pamela Miller, Diane Monnett

ROW II: Stephen Moritz, Bruce Mortimer, Richard Mulligan, Darryl Mullins, Donna Murai, Pat Murphy, Ray Murray, Linda Nelson

ROW III: Barbara Nielsen, Bobby Oxspring, Theda Page, Fred Paisley, Fred Palumbo, Debbie Peel, Mike Pendrak, Deborah Pensyl

ROW IV: James Pensyl, Mary Pickard, Daniela Queen, Sherman Randolph, Sherwood Randolph, Bob Rapoport, Mike Rayburn, Janet Richards

ROW V: Robert Richardson, Mike Riggins, Gary Rogers, Debra Rortina, Stephen Sanstrom, Mike Schepansky, Barb Schumann, Erwin Serino







ROW I: Erick Sheldon, Herbert Shrewsberry, Denise Smith, Gregory Smith, Terry Sosky, Sercy Spears, Nancy Thacker, Joyce Thompson

ROW II: Jaylene Tysor, David Vally, Jeanette Van Atta, Terry Van Vliet, John Vaughn, Catherine Wadle, Wendy Walling, Carol Warren

ROW III: Virginia Carter, Michelle Welch, Nancy Wentworth (no picture), Bill Weske, Mary Whisler, Nancy White, Charles Willette, Linda Williams

ROW IV: Peggy Williams, George Willis, Ronald Wilson, Mike Zitz, Henry Abrecht, Rosemarie Baily, Jennie Baker, Mable Banks

ROW V: Glenn Bearden, Walter Belt, Jan Berlin, Debra Bess, Irene Bishop, Jeanne Boniface, Elizabeth Borders, Vicki Beatty







ROW I: Rose Bostic, Bob Brokenshire, Bill McCune, Mike Burns, James Buschur, David Bush, William Butler, Robert Byrd

ROW II: Richard Calfee, Colleen Campbell, Freidericka Campbell, Judith Carter, Jackie Cobb, Linda Cobb, Mark Coican, Dietrich Coleman

ROW III: Denise Coleman, Alan Coomer, Russell Copeland, Cathy Costa, Ronald Crosby, Thomas Crosby, Tommie Crow, Debra Curran

ROW IV: Anne Dahle, Theresa Daliege, Jeannette Dawson, Barbara Dean, Philon Deutch, Terry Diskin, Linda Douglas, Barbara Draleaus

ROW V: Julian Drew, Carolyn Dunsmoor, Karin Eastwood, Lynn Ecoppi, Ivan Enriquez, Glenn Flohser, Elizabeth France,







ROW I: Wanda Gallmon, Laurie Gan, Harold Garner (no picture), Vicki Gates, William Gay, Mike Gill, Audrey Goodson, Ralph Gordon (no picture).

ROW II: Sharon Gotthelf, Shaunna Green, Zella Hall, Boomer Halstead, Shirley Hansen, Rolanda Hardiman, Debbie Hare, George Hayman

ROW III: Ray Helleman, Tom Hinrichsen, Joe Hoar, Larry Hoover, Janet Horton, Edsel Hostilo, Debra Humphrey, Sherry Huneycutt

ROW IV: Tommy Hunter, Roger Jacobs, Johnnie Johnson, Edna Jones, Michael Jones, Margaret Justice, Rita Kay, Kathleen Keefe

ROW V: Judy Keith, Anthony Knizner, Charles Kriegel, Kathleen Lamontagne, Janet Lee, Angela Leon, Deborah Lewis, James Lindsey







ROW I: Marion Lirot, Elba Lopez, George Lorrison, Steven Loucks, James Lyons, Dolores Madden, Kate Martinez (no picture), Peter Martinez

ROW II: Clotilde Mason, Arnold Mazurek, Tim McAneny, Rebecca McGuire, Reed McGuire, Marcia McKinley, Vera McMillan, Jeffery McNeely

ROW III: Debra Monnett, Jan Mowery, Ivan Nedds, Harold Neidel, Erik Nicholson, Robert Nielsen, Maria Northop, Patricia Nunley

ROW IV: Yvonne Oge, Greg Otto (no picture), Mike Outlaw, Richard Packs, Earl Packs (no picture), Donald Parslow, Michael Patterson, Samuel Pena

ROW V: Alfred Pendrak, Lynn Pisatski, Linda Piselli, Claudia Place, Johann Plante, Marian Queen, Gary Ragle, Verlean Randolph







ROW I: Lydia Range, Alexander Reed, Pat Revolinsky, Rosemarie Reynolds, Robert Rigg, Theresa Riggins, Ann Rohrer, David Rosenkranz

ROW II: Linda Hammer, David Saeger, Susan Sauter, Charles Schul, Else Meeks, Jeffery Schultz, Joanna Schumann, Mike Scroggs

ROW III: Grace Serino, Deborah Shedden, Brian Sheridan, Ellen Slattery, Jeff Smelley, James Smith, Jim Smith, Lois Smith

ROW IV: Robert Smith, Tracy Smith, Raymond Soncksen, Bruce Spears, John Sperry, Patsy Stanford, Mike Starbird, Evelyn Stearns

ROW V: Evelyn Stovall, Zena Tanaka, Kerry Taylor, Patricia Taylor, Deborah Thomas, Steve Thomas, Theresa Thomas, Barry Thompson





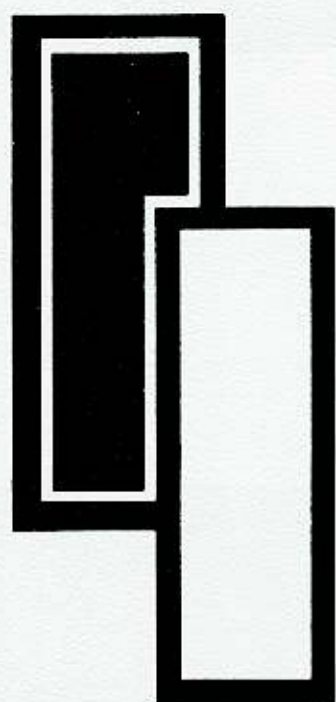


ROW I: David Thompson, Jeanne Thompson, John Truman, Linda Tucker, Dale Valentine, Gordon Vally, Carol VanWinkle

ROW II: Theda Vargas, William Wall, Lindsey Warren, Jan Weske, Kathleen Whisler, Debra Whitman, Marlita Wilson

ROW III: Vickie Womble, Dan Woodhouse, Mike Yenko, Renette Zimmerly





68

ORGANIZATIONS





## *student council*

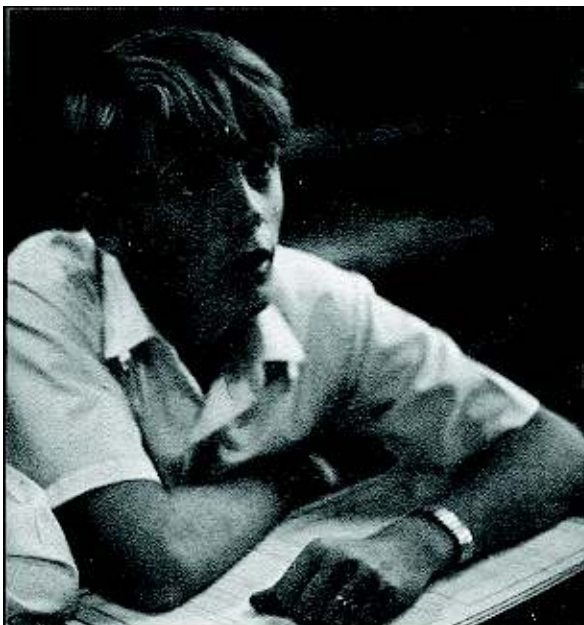
(Back Row) Anita Allran, Diane Moholy, Cyndi Scott, Pauline Demetrakopulis, John Magness, Rob Demers, Leonard Baltimore, (Second Row) Ted Glover, Tom Pond, Bub Emory, Hermann Spilker, John Michaelides, Pete Christenson, Doug Hatt, Fred Pond, (Sitting) Charlene Bowser, Marilina Capps, Anne Marshall, Trish Nedds, Dalleen Churchill, Debbie Nunemaker, Liza Baldwin, Mimi Glover











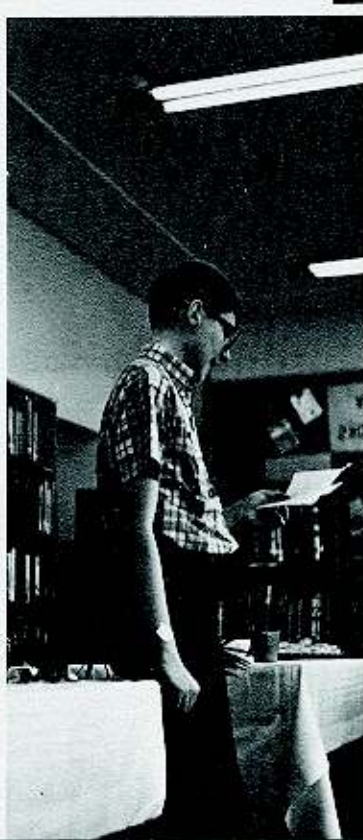
Assistant-Editor, Rocco Nelson



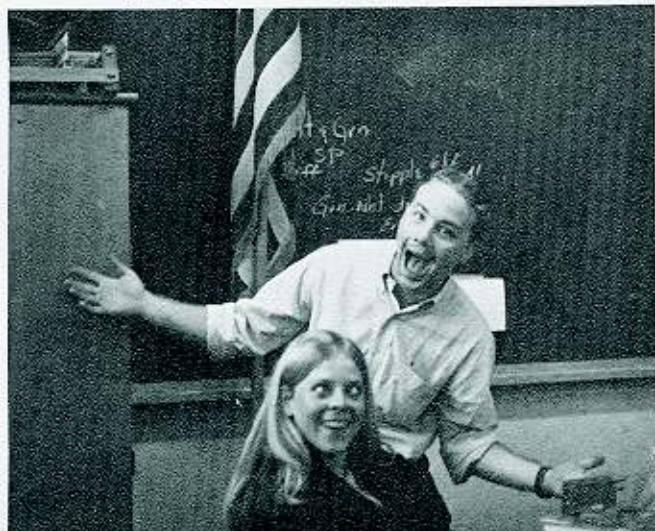
Advisor, Phyllis Berwick

## *yearbook staff*

Editor, Ed Magiera











L to R: Diane Hadley, Linda Burke-11th reporter,  
Barbara Massey-11th reporter, Sue Borders-features,  
Donna Sue Crow-features, photos, Miss Thompson-  
advisor, Anita Lee

## *trichter*

L to R: Elizabeth Godwin, Linda Diaz, Pam Brown, Miss Leora Thompson, Sue  
Lindsey, Anita Lee







## *chorus*

Robert Avila, Paul Blankenship, Freda Braley, Rosetta Brown, E. Kathleen Carnes, Tina Childers, Steve Christianson, Al Clark, Gina Curzi, Luther Ellison, John Foster, Quentin Foster, Linda Garner, Lawrel Gordon, Ken Gram, Willie Hayward, Catherine Hayward, Penny Johnston, Kent Kerr, Foree Kirk, Susan May, Marvin McKinnie, Debbie McLean, Willie Medina, Mary Meeks, Brunilda Medina, Marlene Mori, Janice Murphey, Steve Parker, Gwen Robinson, Raymond Robinson, Ivonne Rodriguez, Amy Smith, Ernest Stevens, Paula Stringfellow, Roxanne Tatum, Gabe Spetzler, Cathy Wickline, Odette Willis

## *madrigals*

Susan May, Gina Curzi, Diane Maholey, Paula Stringfellow, Odette Willis, Mary Meeks, Shelly Austin, Kent Kerr, Ken Gram, Patrick Clifford, Steve Parker







## *concert band*

Ella Barb, Richard Bochniewicz, Roseanna Burns-Librarian, John Calfee, Beth Cheek, Donna Crow, Eleanora Curry, Lynn Fendler-President, Danny Guy, Ben Hassler, George Hernandez, Billy Hodge-Vice President, Anthony Kerns, Ed Magiera-Librarian, John Mangan, David Oge, Tom Pond-Equipment Manager, Antoinette Phillips, Donald Reed, Anthony White, Pamela Zapf, James Vballi, Steve Gotowicke, John Fleming, Dave Humphrey, Debbie Blunk, Susan Ernest, Robert Jones, Kathy Lamontagne, Pat Murphy, Ivan Nedds, Mike Scott, Kathy Whisler, Nancy White

From L to R, Back Row: Ben Hassler, Billy Hodge, John Calfee, Anthony White, Richard Bochniewicz, Ed Magiera, Anthony Kerns, Richard Hernandez, John Mangan, Robert Crosby  
Front Row: Beth Cheek, Shelly Austin, Eleanora Curry, Donna Crow, Pam Zapf, Lynn Fendler, Antoinete Williams, David Oge, James Uballi.

## *marching band*







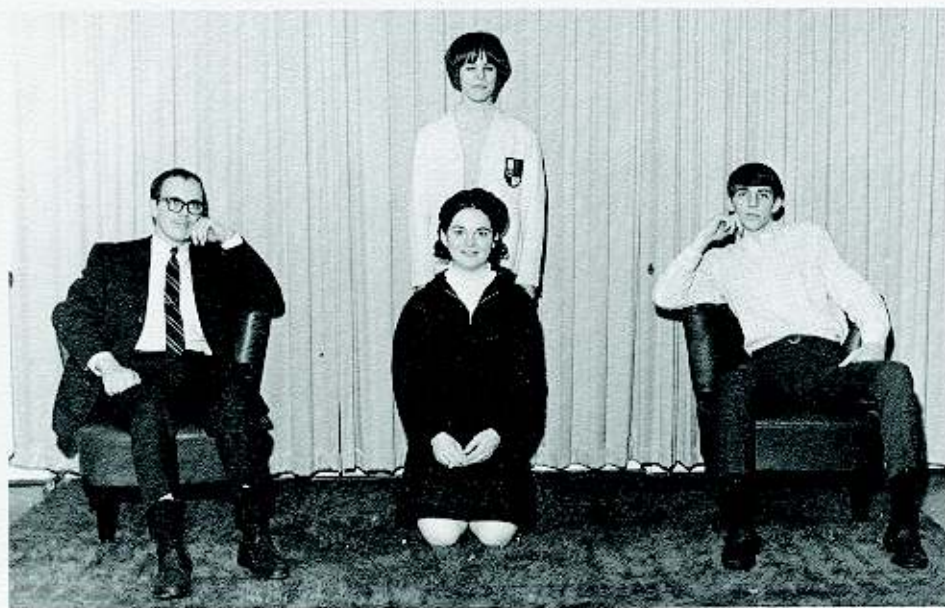
*christmas  
concert*







*drama club*







*an  
evening  
of  
one-acts*





*debate  
club*



(Standing) Eric Riedl, Kirk Mays Gerald, Gerald Gan (Sitting) Hermann Spilker, Betty Bowling, Mr. Wayne Olson-Advisor, Kathy James, Tom Pond

(Standing) Mr. Raab-Sponsor, Harold Freeze, John Sprank, Bertram Spetzler, (Sitting) Mario Curzi, Jerry Gan, Richard Bochniewicz, Hermann Spilker

*chess  
club*





*latin  
club  
1967-1968*

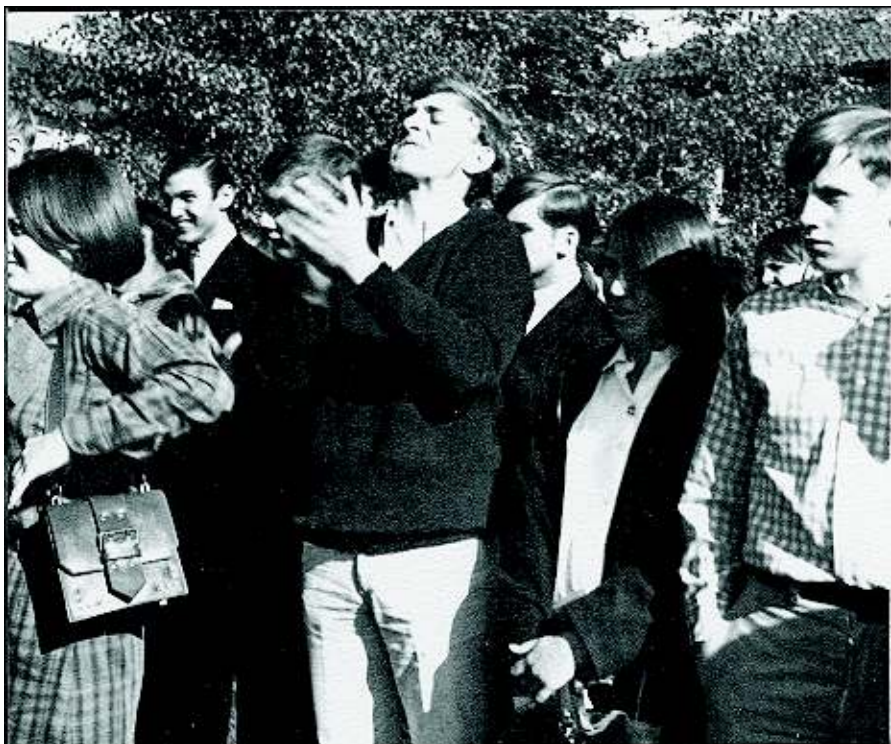


BACK ROW: L. Spears, K. Shedden, Mr. Grana (Sponsor) D. Crow, J. Kamensky, J. Horton LEFT TO RIGHT: M. Daniel R. Hickenbottom, R. Hickenbottom, C. Monuteaux



*german  
american  
club*





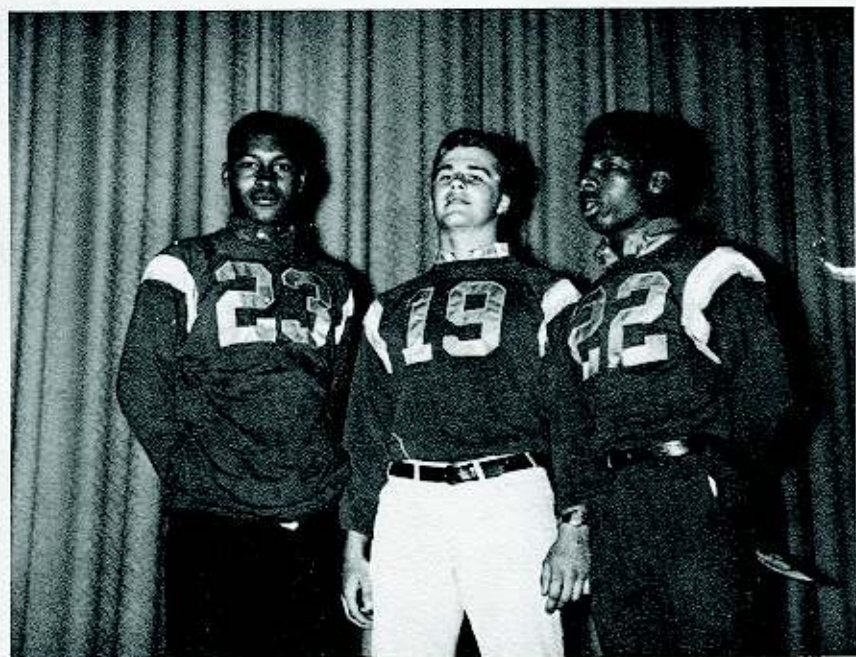
*rally  
candid*



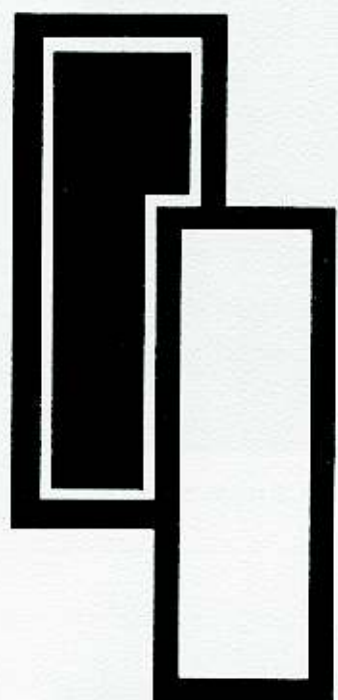












68

DORM



*dorm counselors*  
*1967-1968*



Mr. Gerald Raymond



Head Counselor  
Thomas E. Rowley



Miss Norma Luobikis



Miss Linda Holland



Mr. Kristen Reinertson



HOME, SWEET HOME





A pleasant surprise awaits every new dorm student



Rob really knows how to get ahead







The Many Moods  
of Mays



Mona Lisa?



Could This Be OUR Lloyd??



Mike Referees A Tug-of-War



Some Inmates

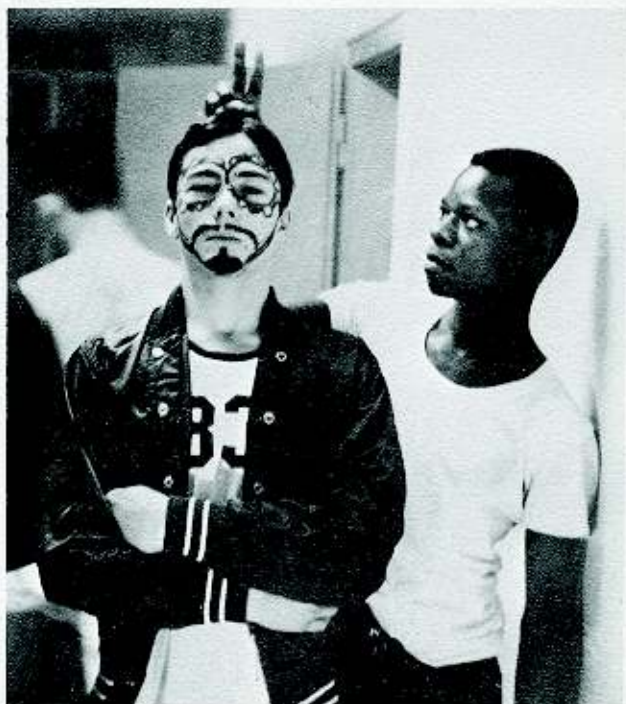




Christ Kindlesmarkt



Ronnie uses his artistic ability to rearrange a room

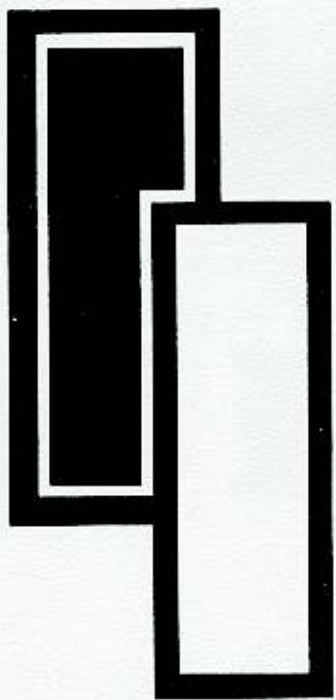


Bill dons his warpaint









68

ACTIVITIES





First place Class of '69

# H O M E C O

Second place Class of '71







Third place Class of 70

# MING '68

Fourth place Class of '68



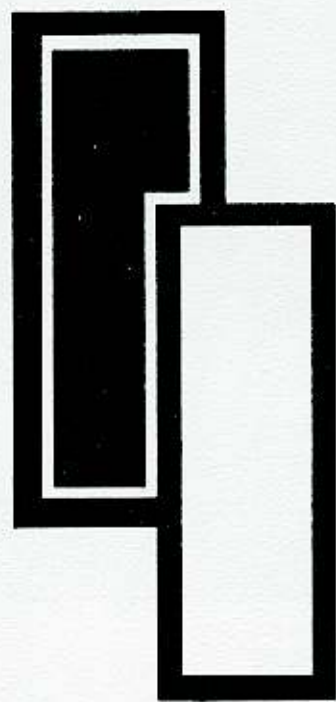


## *queen & court*



From left to right  
Senior Attendant Liz Baldwin  
Junior Attendant Cindy Scott  
Queen Rosetta Brown  
Freshman Attendant Debra Nunemaker  
Sophomore Attendant Jody Breedon

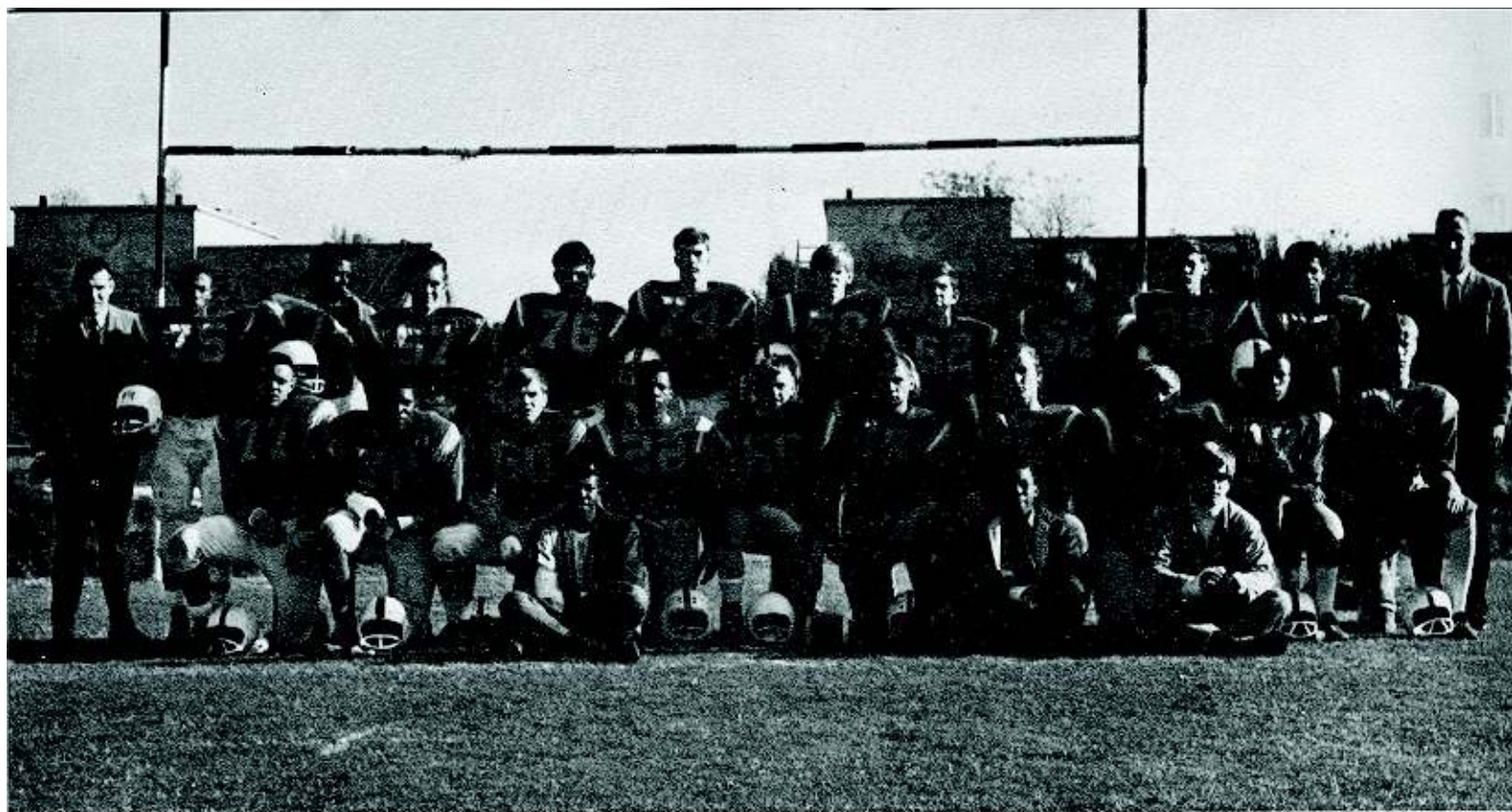




68

SPORTS





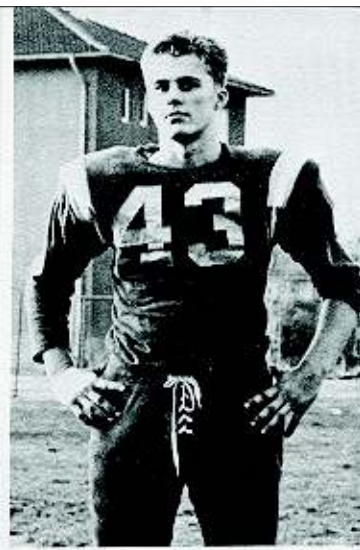
## *varsity football*

Robert Blackmon  
 Bruce Capps  
 Jim Chiarattino  
 Pete Christianson  
 Joe Dunsmoor  
 Luther Ellison  
 John Foster  
 Quenton Foster  
 Ken Gram  
 Ted Glover  
 Curtis Hardiman  
 Mike Heffner  
 Theo Johnson  
 Fred Lewis

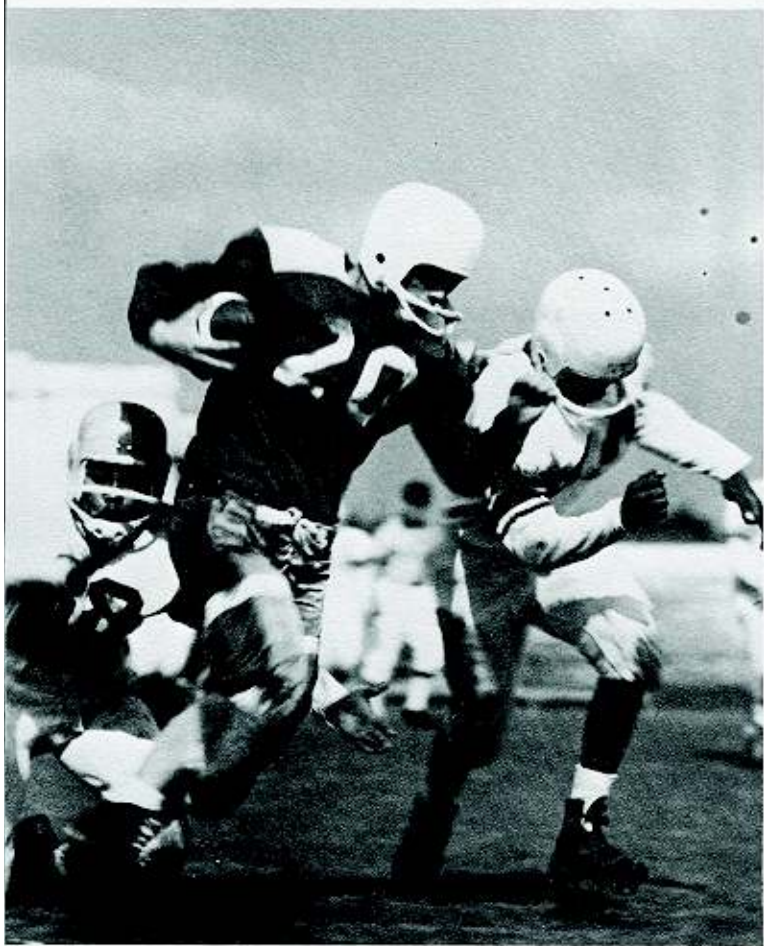
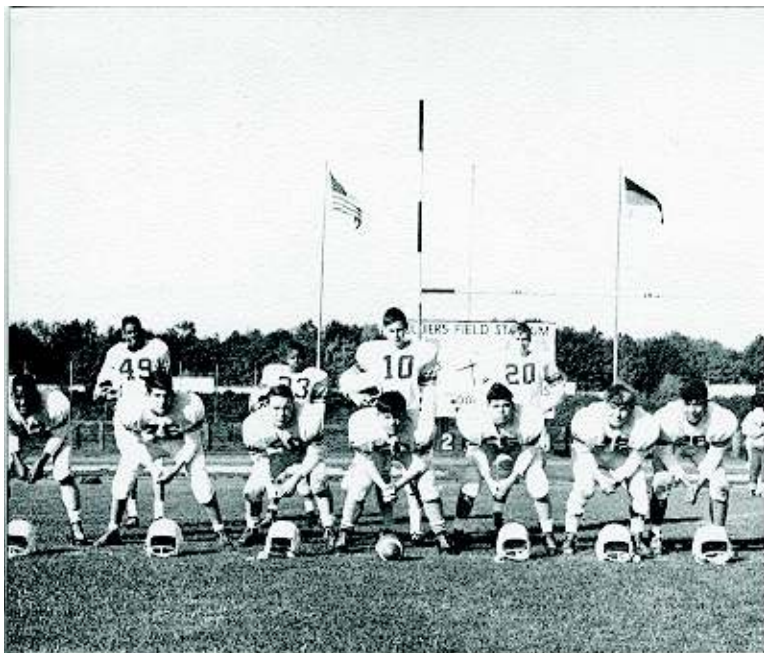
Tom Lilly  
 Jon Moholy  
 Jay Mowery  
 Don Reed  
 Jack Rose  
 Stan Runnels  
 Earl Solomon  
 Bob Wilson  
 Bill Womble

MANAGERS  
 Bill Duhmansky  
 Harry Mara  
 Bill Tucker













## *j. v. football*



(Standing, L. to R.)

Chester Alford  
Herman Hoffman  
Mario Curzi  
Harold Freeze  
Gary Hardiman  
Mike Thompson  
Coach Ryan  
Bob Bowling  
Chris Bowser  
Rob Demers  
Frank Lengsfield  
Baxter Fraser  
Kevin Campbell  
Pete Kang  
Stephan Tucker

(Kneeling, L. to R.)

Joe Messina  
John Van Winkle  
Ben Hall  
David Green  
Barry Banks  
Bernard Joyner  
Chris Clenons  
Bob Montgomery  
Arthur Sulton  
(Sitting, L. to R.)  
Phil Shaw  
Ed Calfee  
Holis Johnson  
John Kang  
Paul Lathan  
Larry Spears  
John Horton





## *majorettes*



HEAD MAJORETTE

Diane

Maholy





Margo

Breeden

Pat

Perkins







## *varsity basketball*

Larry Bilon

Greg Boy

Evan Douzette

Pete Ballard

Doug Hatt

Bruce Nichols

Steve Basozki

Freddie Lewis



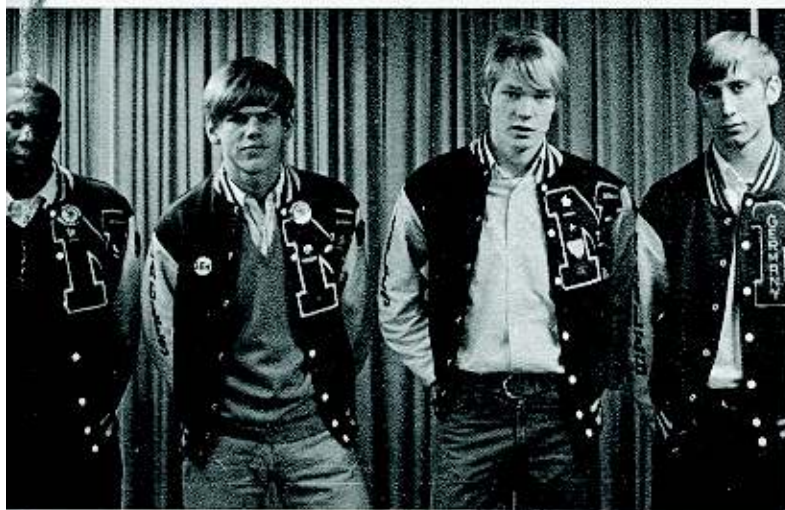








# *lettermans club*



Joe Anthony, Pete Christianson, Greg Boy, Larry Bilon



Joe Dunsmoor, Ted Glover, Pete Ballard, Jon Moholy, Jack Rose

Earl Solomon, Thomas Lilly, Ken Graham, Robert Blackmon, John Foster















Cindy Scott



Debbie Honeywell



Trish Mounts

# *varsity cheer- leaders*



Annetta Allran

Anne Marshall





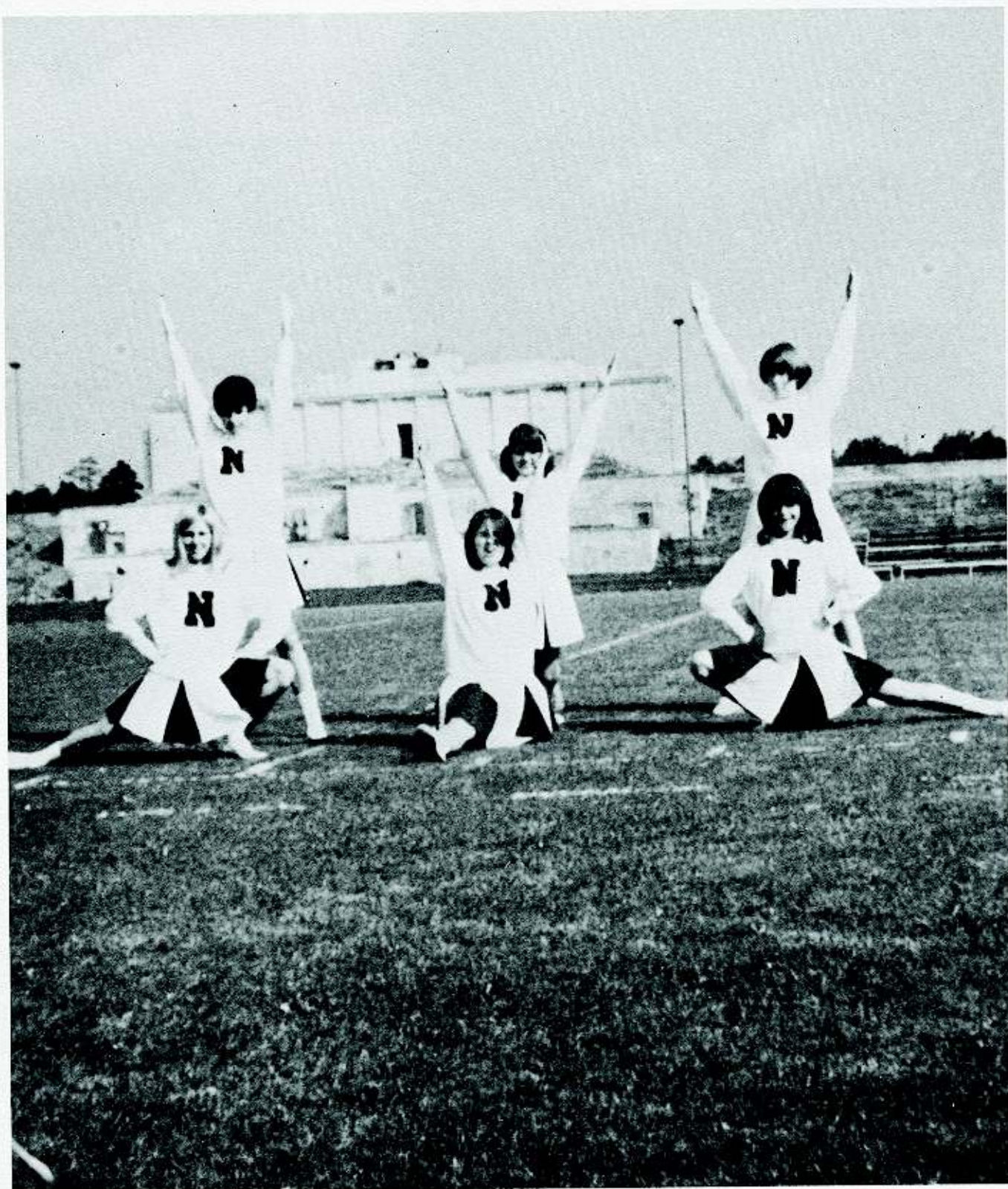


Liz Baldwin-Capt.

Varsity and J.V.

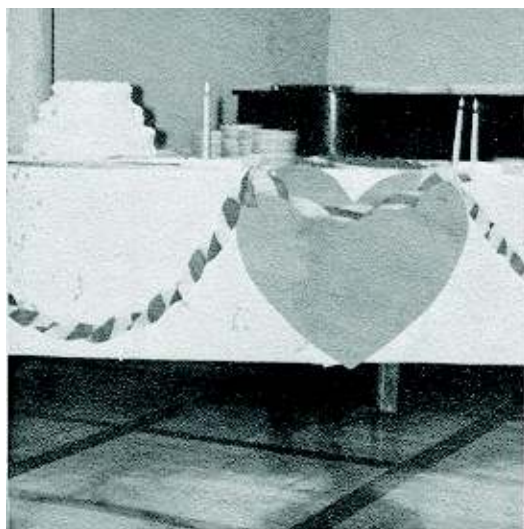






top row. Cindy Duffy, Lynn Fendler, Debby Stewart bottom row. Jody Breeden, Esther Smith, Debby Nunemaker





Princesses:  
Sharron Vaughn  
Debbie Gotthelf  
Anita Allran  
Patti Nunemaker

Princes:  
John Van Winkle  
Rob Demers  
Jim Albright  
Earl Solomon



## *sweetheart ball*







PRES.-Jack Rose  
(not pictured)  
V.P.-Jon Moholy  
(not pictured)  
SECRETARY  
Anne Marshall  
TREASURER  
Lucy Lindsey  
MEMBERS  
Cyndi Scott  
Steve Clemens  
(not pictured)  
SPONSOR  
Mr. Wm. May

## *national honor society*



### INDUCTION 68

Row 1: T. Mounts, B. Massey, M. Stringfellow, S. Pollock, Row 2: O. Willis, L. Fendler, L. Burge, C. Hundemer, A. Allran, Row 3: K. Agorichas, F. Pond, K. Gram, S. May Not pictured: G. Gan, J. Peterson, T. Pond, L. Sorbo, B. Spetzler, J. Sprank, J. LaRocco, M. Dwyer





"Jenny Jones, are you the mother of this child?"



"I can see no one."



"There sir, if it doesn't hurt it can't be good for you."

## *tom jones*

"The theater fans of the Nürnberg High School always pick out the more complicated plays, and most of the time they don't fail in their selection. This time inhabitants of Fürth 'Little America' played at the City Opernhaus 'Tom Jones,' where the story of the famous foundling was met by the audience with loud applause."

Fürther Nachrichten

1968 DRAMA AWARDS-TOM  
JONES

Best Actor: Steve Clemens  
Best Actress: Lucy Lindsey  
Best Character: Edie Strenger  
Paul Davis  
Best Supporting: Trish Nedds  
Ariel Deutch



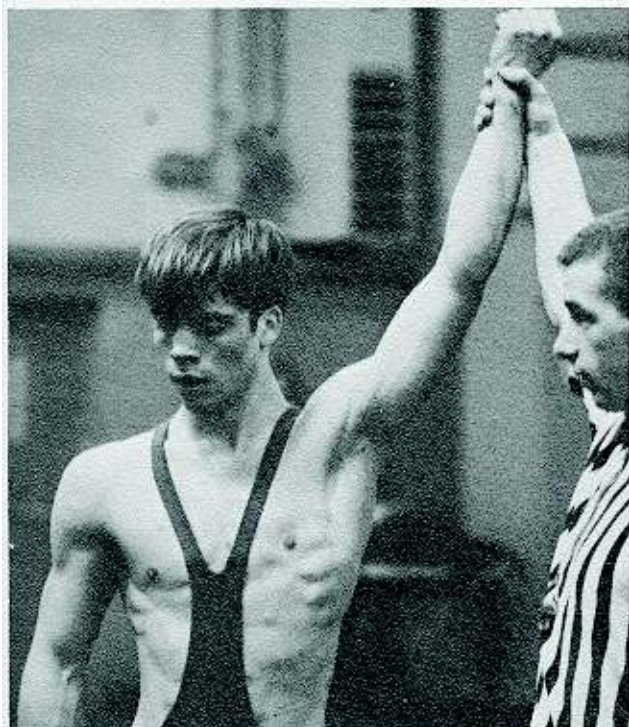
"It looks very tempting."







## *wrestling*



Two of Nurberg High School's wrestlers deserve special notice. We would like to recognize Jack Rose and Jon Moholy, departing seniors, for their outstanding contributions to the NHS sports program in both wrestling and football.





# *tennis*

Coach: Mr. Fuller



# *track*

Coach: Mr. Nelms





*varsity  
soccer*



*j.v.  
soccer*





## *music festival 1968*

The 1968 Music Festival was held in the Furth Opera House, one of the most perfectly preserved samples of baroque architecture in Germany. The combined bands and choruses of Munich, Augsburg, Wurzburg, and Nurnberg worked together to make the evening a success.

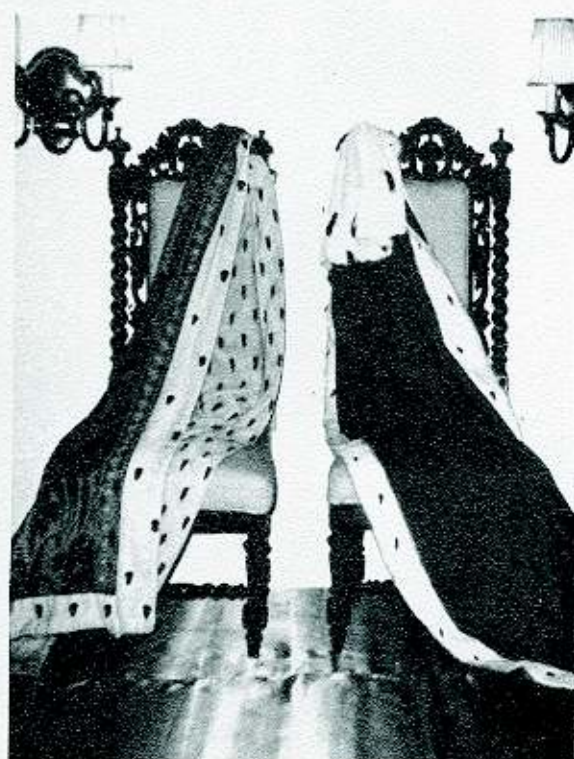




*camelot*

*senior-junior*

*prom*







QUEEN: Patti Nunemaker

*let it never be forgot,  
that once there was a spot,  
for one brief, shining moment  
that was known as Camelot.*

KING: Jack Rose



The land of the Round Table and the sacred laws of chivalry revived as the 1968 Senior-Junior Prom unfolded in the ballroom of the Grand-Hotel Fuerstenhof Nurnberg. For a brief five hours, the guests enjoyed a three-course dinner, danced to the music of The German Bonds, and were entertained by the Prom M.C., Jason Lindsey. At the magic hour of twelve, when the past becomes the present, the new King Arthur and Queen Guenevere were crowned. At the stroke of one the spell was broken and Camelot again faded into the past.

**Not pictured:**

**Princesses:**

Marge McGuire (2)  
Liza Baldwin (1st)

**Princes:**

Doug Hatt (2nd)  
Steve Clemens (1st)





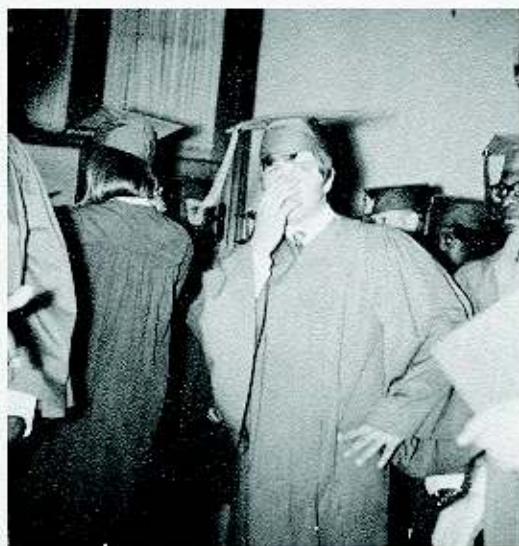
## *commencement 1968*

"commencement, n., 1. a commencing; beginning; start. 2. the time of commencing or beginning 3. the day when degrees or diplomas are conferred at a school or college. 4. the ceremonies in connection with this." The graduation from a child's dependence to an adult's independence. In hardly more than an hour, the 98 seniors of Nurnberg High School left the joys and sorrows of high school behind and prepared to go their different ways. It was a time of...

preparation...



expectation...



procession...







Valedictorian: Gerry Gan  
Salutatorian: Jack Rose

that long-awaited diploma...

good-byes...

and a look into the future.

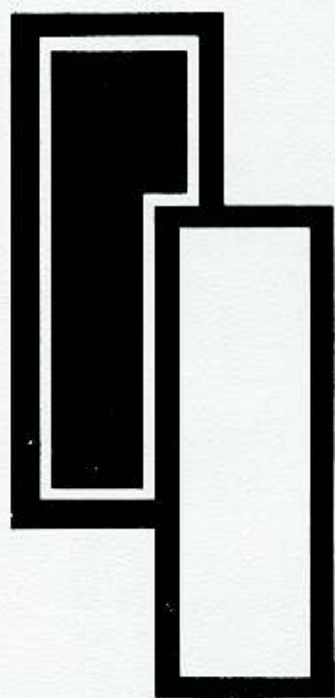




*auf wiedersehen und  
viel glück, Class of 1968*







68

ADVERTISERS



# *patrons*

Mr. Bobby R. Alexander  
 Col. and Mrs. B. E. Allran  
 Lt. Col. and Mrs. W. R. Austin  
 Sgt. and Mrs. James Bair  
 Mr. and Mrs. Hubert L. Ballard  
 Chaplain Ballas and Family  
 S/sgt. and Mrs. Thomas T. Barron  
 Bill and Sallie Bauer  
 Col. and Mrs. Leonard Becidea  
 Miss Dorothea Bents  
 Bertieleinschatzpoo  
 Miss B.  
 A/1C Jackie Bishop  
 A/1C Robert Blakeman  
 S/sgt. Robert Blanchard  
 Bod II  
 Col. and Mrs. R. P. Bonasso  
 Lt. Col. and Mrs. Borell  
 Lt. Col. and Mrs. Edmund G. Boy  
 Mr. Gary Brewer Baby  
 Capt. William Brice  
 Mrs. Anne Bull  
 Mr. and Mrs. Walter Cherry  
 Lt. Col. and Mrs. Frank Cohn  
 Maj. and Mrs. Collins  
 Cool  
 Mr. and Mrs. Norman Corkman  
 S/sgt. William Coty  
 Mr. Gordon E. Dale  
 A/2C Miles Dobbins  
 Doug and Margo  
 Lt. Col. and Mrs. W. D. Duffy  
 Mr. and Mrs. W. Duris  
 A/1C Thomas Dutton  
 Col. and Mrs. F. A. Dwyer  
 Charlie Eagle  
 Eb Vas  
 Maj. and Mrs. J. L. Ecoppi  
 M/sgt. C. J. Farberg  
 Col. and Mrs. F. P. Field  
 Mr. and Mrs. Anthony P. Fratus

Mr. and Mrs. Venvert Martin

Mr. and Mrs. Fuller  
 Maj. and Mrs. C. H. Fullerton  
 Burt Gloor  
 Lt. Col. and Mrs. E. J. Gotthelf  
 A/1C Kenneth Grasser  
 Maj. and Mrs. Roy Graves  
 Richard and Shirley Harvill  
 Lt. Col. and Mrs. Hatchett  
 Mr. and Mrs. Kenneth G. Hatt  
 Maj. and Mrs. D. E. Haviland  
 A/1C David Henry  
 Lt. Col. and Mrs. H. N. Henry  
 Miss Holland  
 Capt. Robert Hone  
 Col. and Mrs. Robert L. Honeywell  
 Maj. and Mrs. Robert Howe  
 CM/sgt. Morris Hutchings  
 Shelly Hutchinson  
 Mr. William P. Hutchinson  
 Maj. and Mrs. F. W. Insley  
 Mr. John Jack  
 Maj. and Mrs. L. A. James  
 Lt. Col. and Mrs. T. Z. James  
 Sgt. Maj. and Mrs. W. L. Johnson  
 M/sgt. Jack Kearney  
 Mr. and Mrs. Al Kellem  
 Mr. Donald E. King  
 Miss Sally King  
 Lt. Col. and Mrs. T. J. King  
 SM/sgt. Ben Kinkade  
 Mrs. Patricia Kinsey  
 Mr. Eugene S. Klapper  
 M/sgt. and Mrs. Lancaster  
 Maj. and Mrs. D. A. Lawhorn  
 Mr. and Mrs. Eric Long  
 Maj. and Mrs. Walter H. Lucas  
 Lt. Col. and Mrs. William Mack  
 Mr. and Mrs. Joseph Magiera  
 Lt. Col. and Mrs. G. W. Magness  
 Mr. and Mrs. R. Malinowski  
 Mr. Manning



Lt. William Marvin  
 S. William May  
 Col. and Mrs. J. L. McCallister  
 1-Sgt. and Mrs. McCorkle  
 Nancy G. McKinnon  
 Mr. Richard McNeese  
 Lt. Col. Roland Meeks  
 Miami  
 Cherry Mikroschalter G.M.B.H.  
 Mr. and Mrs. Joseph D. Moholy  
 William H. Monteith  
 A/1c Lewis Moore  
 Chaplain and Mrs. Dean Morey  
 S/sgt. Robert Morrison  
 Mr. Paul Muehlhan  
 Sgt. Maj. and Mrs. Patrick Murphy  
 Mr. Nasser  
 Lt. Col. and Mrs. Needles  
 S/sgt and Mrs. Vincent K. Nelson  
 Lt. V. K. Nelson, Jr.  
 Mr. Peter E. Neville  
 Maj. and Mrs. C. W. Niles  
 Normal  
 Capt. and Mrs. W. F. O'Conner  
 Mr. and Mrs. Gerald O'Dell  
 A/1C and Mrs. Ted Olcovich  
 Mr. Olson  
 Mr. and Mrs. Paul Owen  
 M/sgt. and Mrs. John Padden  
 Sgt. and Mrs. Padilla  
 Mr. and Mrs. E. D. Patton  
 Lt. Col. and Mrs. T. C. Perkins  
 Mr. Peterson  
 A/1C Jerome Petro  
 Lt. Col. and Mrs. H. D. Pitchford  
 M/sgt. and Mrs. R. L. Pollock  
 Mr. and Mrs. Phelps Pond  
 Miss Porter  
 M/sgt. William Powell  
 Brigitte Raab  
 Mr. Robert Ray  
 Lt. Col. and Mrs. C. G. Reeder

Smith Reeves  
 Maj. and Mrs. Paul E. Reger  
 Kristen Reinertson  
 S/sgt. Care Reinmiller  
 Lt. Col. and Mrs. P. A. Revolinsky  
 Col. and Mrs. Ellard T. Rogers  
 Lt. Col. and Mrs. G. M. Rose  
 Maj. and Mrs. Rugani  
 A/1C James Samuleson  
 S/sgt. Bernard L. Sarbaugh  
 Sgt. Dennis Schaefer  
 Pooh Schroder  
 Brig. Gen. Edward W. Scott, Jr.  
 Mrs. Lyle Scott  
 Mr. Serino  
 Charles D. Sessions  
 Short  
 Luther C. Skelton  
 Mr. Slattery  
 Charlotte Smith  
 Maj. L. D. Smith  
 S/sgt. and Mrs. S. Smith  
 Snuffy  
 CM/sgt. James Spartz  
 Norah Speck  
 Lt. Col. and Mrs. M. F. Speir  
 Mrs. Gerlind H. Standke  
 Mr. and Mrs. Lester Strenger  
 Maj and Mrs. Stevenson  
 Herr Heinz Strote  
 S/sgt. Robert Tharp  
 Lt. Col. and Mrs. W. N. Thomas  
 Miss Leora Thompson  
 Maj. and Mrs. E. H. Tobin  
 Maj. and Mrs. A. N. Turner  
 A/1C Delbert Tuter  
 Maj. and Mrs. H. E. Van Vliet  
 Lt. Col. and Mrs. P. C. VanWinkle  
 Maj. Leon Weston  
 Mr. Dennis E. Weinhoff  
 Lt. Ellswart Wiggins  
 Capt. Rudy Younger





*What,*

*Us*

*Worry*

*??*



Courtesy of Student Council



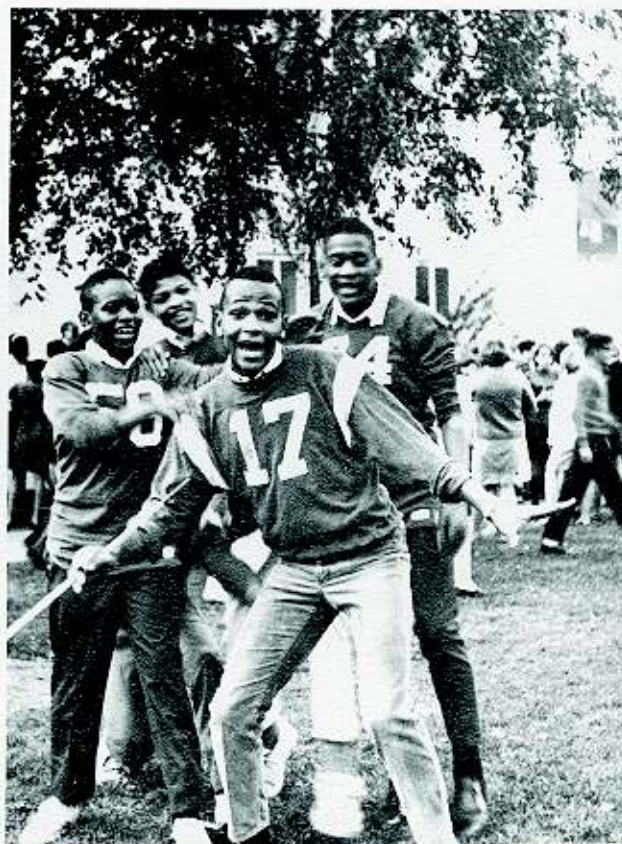


COMPLIMENTS OF

**CHERRY** 

**Cherry Electrical Products Corporation • 1650 Old Deerfield Road • Highland Park, Illinois 60035**

Mr. Walter Cherry, President



Mr. Joseph Magiera, Director

CHERRY MIKROSCHALTER G.M.B.H. 12, RIEDINGERSTRASSE, 8580, BAYREUTH, BAVARIA



SUCCESS TO

THE CLASS OF '68

COMPLIMENTS OF

**The 5-K N.C.O. Wives Club**

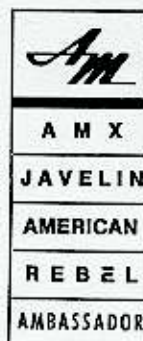
**Hof Air Station**

COMPLIMENTS OF

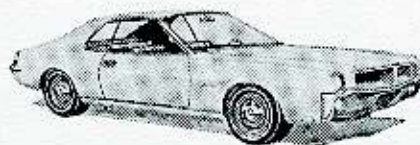
**American Motors**



AMC MILITARY  
SALES  
EES SHOPPING  
CENTER  
80-90 WALDSTRASSE  
851 FURTH/BAY  
TEL (0911) 775484



**AMERICAN MOTORS CORPORATION**  
**MILITARY SALES DIVISION**





COMPLIMENTS

OF

**LINDSEY'S**

**BOARDING**

**HOUSE**

COMPLIMENTS

OF

**KENNETH G.**

**HATT**

METROPOLITAN

LIFE INSURANCE

COMPANY



**K A L B**

**C L U B**

DINING & DANCING AT KALB

OFFICERS & CIVILIANS CLUB



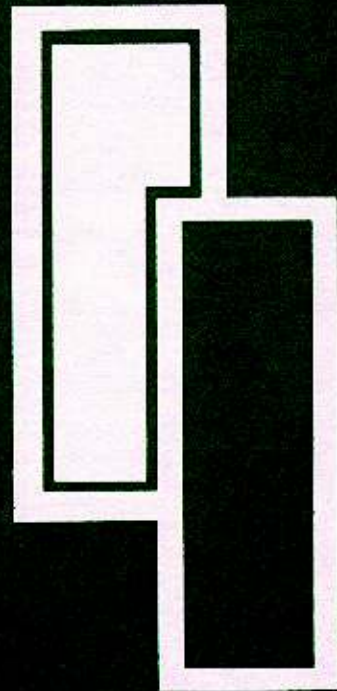
# *credits*

WE WISH TO EXPRESS  
OUR GRATITUDE TO  
MR. WAYNE OLSON  
WHO WAS ALWAYS WILLING  
TO HELP WHEN WE NEEDED IT.

TO MR. WILSON FOR THE  
PHOTO EQUIPMENT.

TO MR. PETERSON, MR. SKELTON,  
AND MR. OSWALT FOR HELPING  
US FIND TIME TO FINISH  
THE BOOK. TO MISS "B" FOR  
PUTTING UP WITH US FOR  
A WHOLE YEAR.





68





Miss Berwick - Advisor  
Ed Magiera - Editor  
Austin Nelson - Assistant Editor  
Lucy Lindsey - Treasurer

Layouts:

Bob Berryhill  
Lucy Lindsey  
Janell Nelson  
Jan Needles  
Debbie Honeywell  
Judi Fullerton  
Debbie Barron  
Shelly Austin  
Georgian Demetrakopoulos  
Fred Pond  
Ed Magiera  
Austin Nelson

Sales:

Bob Berryhill  
Austin Nelson  
Cindy Hundemer  
Janell Nelson  
Gail Padden  
Ingrid Koseki

Typists:

Mary Meeks  
Judi Fullerton  
Debbie Honeywell  
Janell Nelson  
Gail Padden

Photography and Developing

Bruce Duffy  
Bob Berryhill  
Austin Nelson  
Ed Magiera  
Charles Ferris  
Murph

Editors right hand man

Bob Berryhill



