

**ICT**

Coupon Printer  
**GP-58CR**



**Installation  
Guide**

**International Currency Technologies Corp.**

## Use of Materials Limitations

International Currency Technologies Corporation (ICT) all rights reserved.

All materials contained are the copyrighted property of ICT.

All trademarks, service marks, and trade names are proprietary to ICT.

ICT reserves the right at all times to disclose or to modify any information as ICT deems necessary to satisfy any applicable law, regulation, legal process or governmental request, or to edit, refuse to post or to remove any information or materials, in whole or in part, in ICT's sole discretion.

## Contents

<b>1. Introduction</b> .....	2
<b>2. Specifications</b> .....	3
<b>3. Dimension</b> .....	5
3-1. Metal Frame.....	6
3-2. Component Names.....	7
<b>4. Hardware Setup</b>	
4-1. Connection.....	8
4-2. DIP Switch Setup.....	9
4-3. Harness.....	10
4-3-1. I/O Circuit.....	13
4-4. Setup Procedures.....	14
<b>5. Software Setup</b>	
5-1. Coupon & Receipt Setup.....	19
5-2. Tools .....	20
<b>6. How to replace a new paper roll</b> .....	44
<b>7. Troubleshooting</b> .....	46

# 1. Introduction

The GP-58CR has a built-in real time clock for the ticket time stamping. Its excellent reporting system provides daily and summary transaction reports. The GP-58CR stores up to 365 days of daily reports, and the reports can be deleted if no longer needed.

Both coupon and receipt are customizable. The downloadable design provides the flexibility to use the customized ticket formats and logos in an easy way. Using the GP-58CR software tools, the designed format can be saved for later use.

## **Feature**

- ◆ Full / partial cut function
- ◆ User-friendly multiple interfaces
- ◆ Easy installation and low maintenance
- ◆ Fast printing speed

## 2. Specifications

### **General**

<b>Power Source</b>	12V DC (10.8~13.2 VDC) Min.165 mA~Max. 3.75A
<b>I/O Level</b>	DC 0V~12V 5mA~130mA
<b>Paper Width</b>	56 ±0.5mm
<b>Paper Roll Diameter</b>	65 ±0.5mm
<b>Interface</b>	RS232, Pot of Gold, Pulse
<b>Power Consumption</b>	Standby : 0.16A, 2W Operation : 2.5A, 30W Maximum : 3.75A, 45W
<b>Operation Environment</b>	Operation Temperature : 0°C~+50°C Storage Temperature : -20°C~+60°C Humidity : 30 %~85 %RH (no condensation)
<b>Weight</b>	Approx. 700g
<b>Installation</b>	Indoor

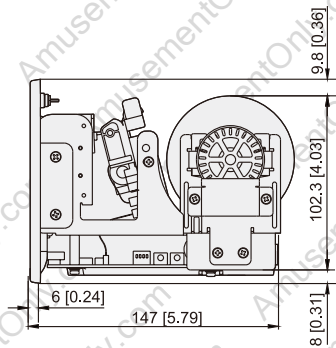
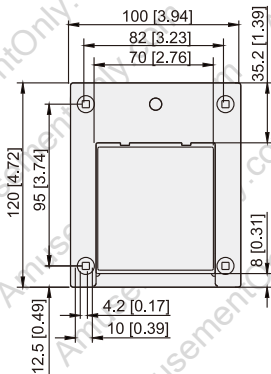
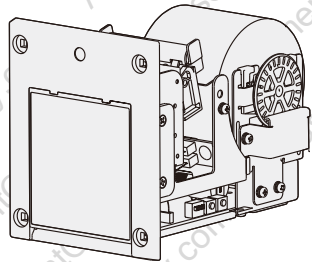
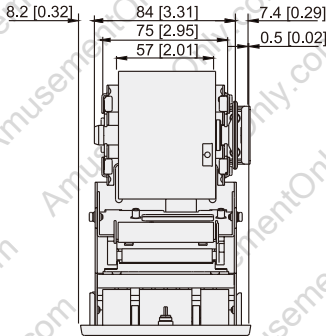
**Cutter**

<b>Thickness</b>	Max. 0.12mm
<b>Life Time</b>	Max. 500,000/time
<b>Time</b>	Max. 1 sec/time

**Print head**

<b>Life</b>	30KM
<b>Resolution</b>	8 dots/mm
<b>Speed</b>	40mm/Sec

### 3. Dimension



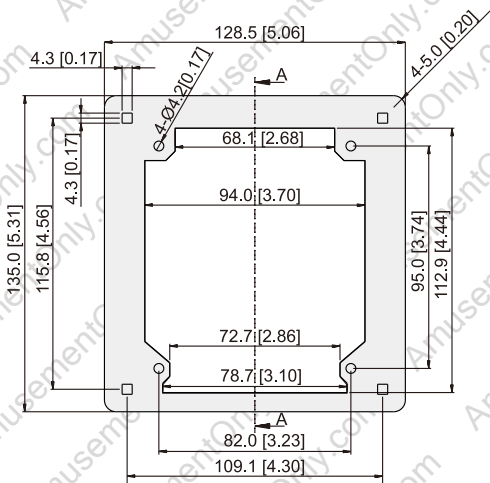
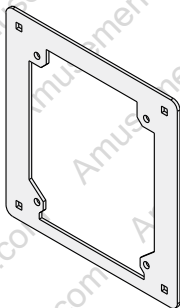
Unit:mm[inch]

3 FIG.01

### 3-1. Metal Frame (Optional)

For VMC bezel which is larger than GP58CR bezel.

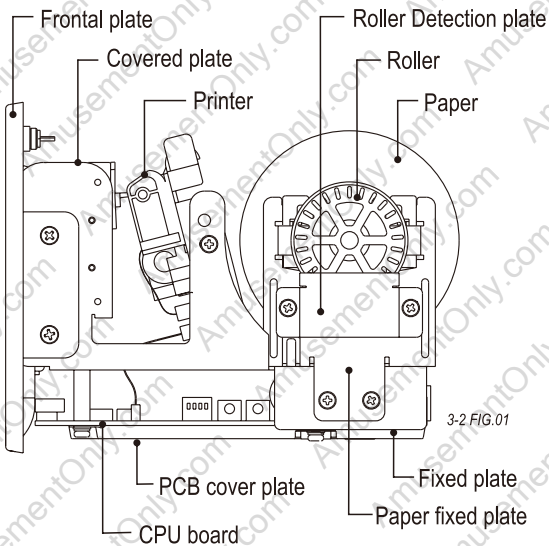
Part Number: C19780-R



Unit:mm[inch]

3-1 FIG.01

## 3-2. Component Names



## 4. Hardware Setup

### 4-1. Connection

Please refer to the pictures and tables on the following pages for information about the function of each of the connector pins.



4-1 FIG.01

#### **CN1 C/A & B/A**

PIN 1- Red.....	+12V DC
PIN 2- Black.....	GND
PIN 3- Brown.....	Coin in signal, Input, Open Collect
PIN 4- Orange.....	Note in signal. Input, Open Collect
PIN 5- Yellow.....	Payout Trigger, Input, Open Collect
PIN 6- Green.....	Ticket Out, Output, Open Collect
PIN 7- Blue.....	Error output, Output, Open Collect

#### **CN2 Serial Interface**

PIN 1- GND
PIN 2- TXD2, Output, TTL Level.
PIN 3- RXD2, Input, TTL Level.
PIN 4- PROGRAM
PIN 5- /RESET
PIN 6- VCC (+5V DC)
PIN 7- RXD1, Input, TTL Level.
PIN 8- TXD1, Output, TTL Level.



**Do not use RS232 and USB simultaneity.**

## 4-2. DIP Switch Setup

4-2 TABLE 01

Function	SW1	SW2	SW3	SW4	KEY1	KEY2
Part Cut	OFF					
Full Cut	ON					
38400/N/8/1(Pulse Mode)	OFF					
9600/N/8/1(Pulse Mode)		ON	OFF			
Default						
Pulse Mode				OFF		
Pot of Gold Mode				ON		
*Print Transaction Records					ON	
*Paper Foward						ON

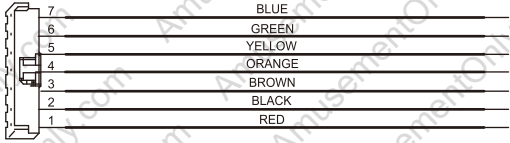
\* KEY1 & KEY2 only work when SW4 is OFF (Pulse Mode).

## 4-3. Harness application

4-3 TABLE.01

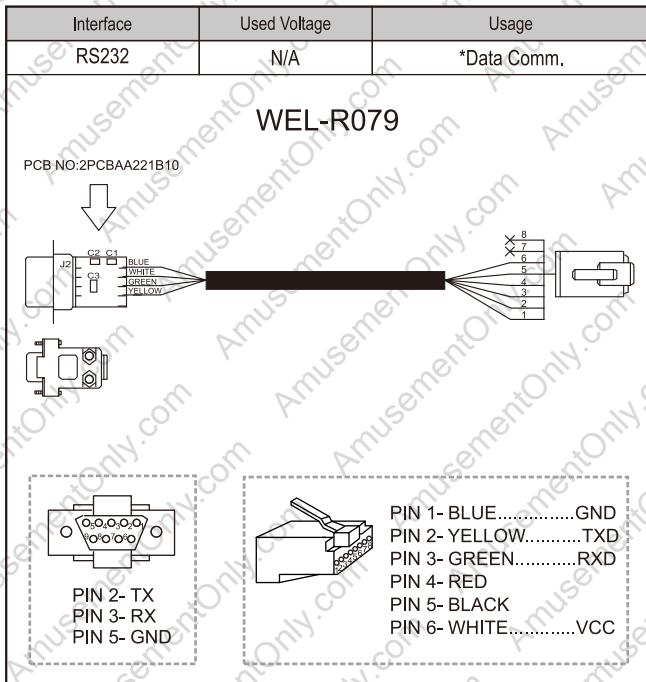
Interface	Used Voltage	Usage	Harness	Page
Pulse/ Hopper	12V DC	Power & *Data Comm.	WEL-R082	10
RS232	N/A	*Data Comm.	WEL-R079	11
POG	N/A	*Data Comm.	5RTP-00580P0B	12

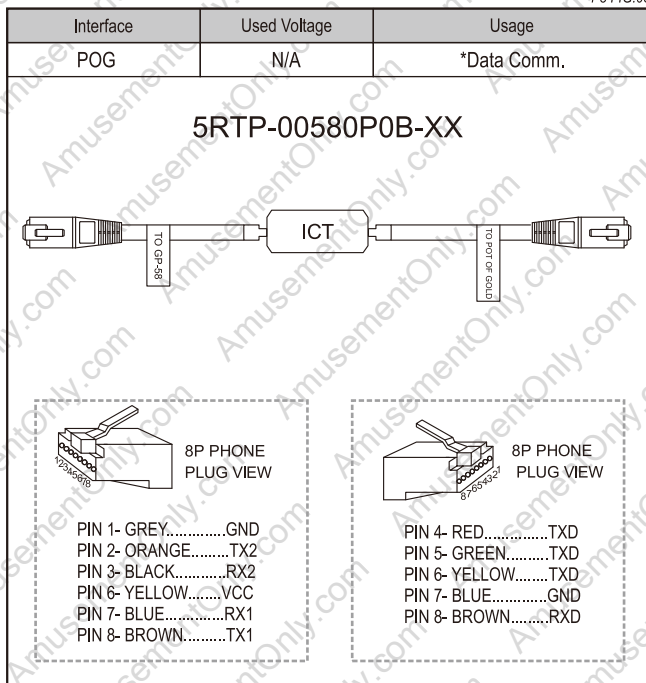
4-3 FIG.01

Interface	Used Voltage	Usage	
Pulse/ Hopper	12V DC	Power & *Data Comm.	
<b>WEL-R082</b>			
			
PIN	Color	Function	Signal
1	RED	Power +12V/+24V	POWER+ INPUT
2	BLACK	Power -0V (GND)	POWER- INPUT
3	BROWN	COIN_IN Trigger	PULSE INPUT
4	ORANGE	NOTE_IN Trigger	PULSE INPUT
5	YELLOW	PAYOUT Trigger	PULSE INPUT
6	GREEN	TICKET_OUT	LOW VOLTAGE OUTPUT
7	BLUE	ERROR_OUT	LOW VOLTAGE OUTPUT



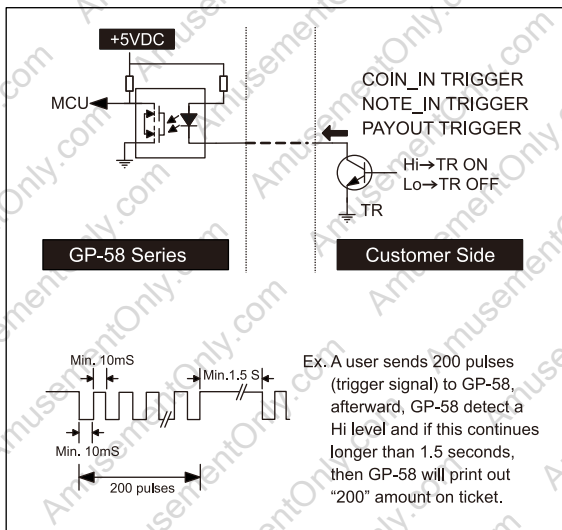
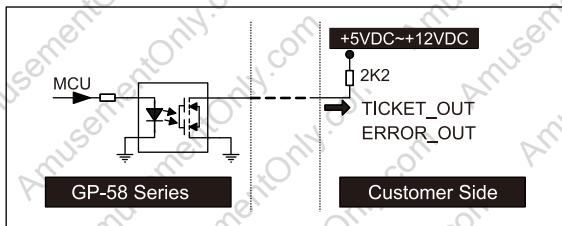
- **PIN3~PIN5 Normal Input Voltage: HI DC 5V~12V.**  
Trigger Level Voltage: Low 0V (GND) Output Current Max. 5mA.
- **PIN6~PIN7 Normal Floating.**  
Output Signal: Low 0V (GND) Input Current Max. 130mA.





## 4-3-1. I/O Circuit

4-3-1 FIG.01



## 4-4. Setup Procedures

### **General Setup:**

Step 1. Connect WEL-R082 to CN1 on PCB.

Step 2. Install paper roll into paper roll container on machine, paper roll is required to be setup according to the same direction of raster. (Please refer to Chapter 6.)

### **Step 3. For RS-232 or Coupon/ Receipt Format Setup:**

Connect WEL-R079 to PC COM port and CN2 on machine. (Page 11, 4-3 FIG.02)

Step 4. Turn power on and install paper roll properly, the machine will automatically detect the paper (Approx. 2 seconds) and roll the paper into the printing module.

If the installation of the paper roll is correct, the machine is ready for printing.

Working light on the machine's bezel will be on.

(Please connect the wires as Page 16, 4-4 FIG.01)

Step 5. JP2 is for battery setting.

Switch between enable and disable for battery setting.

\*Default setting is Enable. (Page 18, 4-4 FIG.03)

**Pot of Gold Setup:**

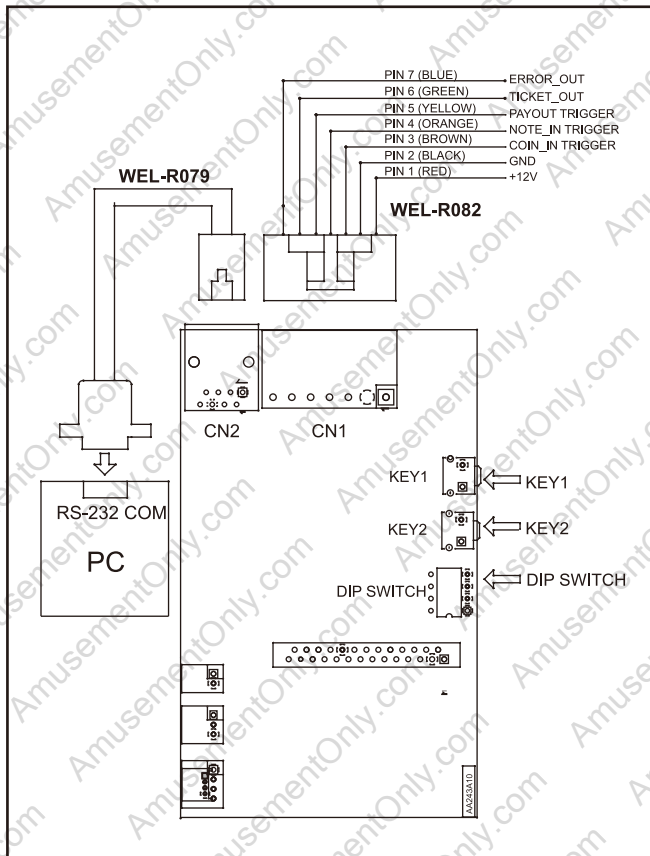
Step 1. Connect WEL-R082 to CN1 on PCB.

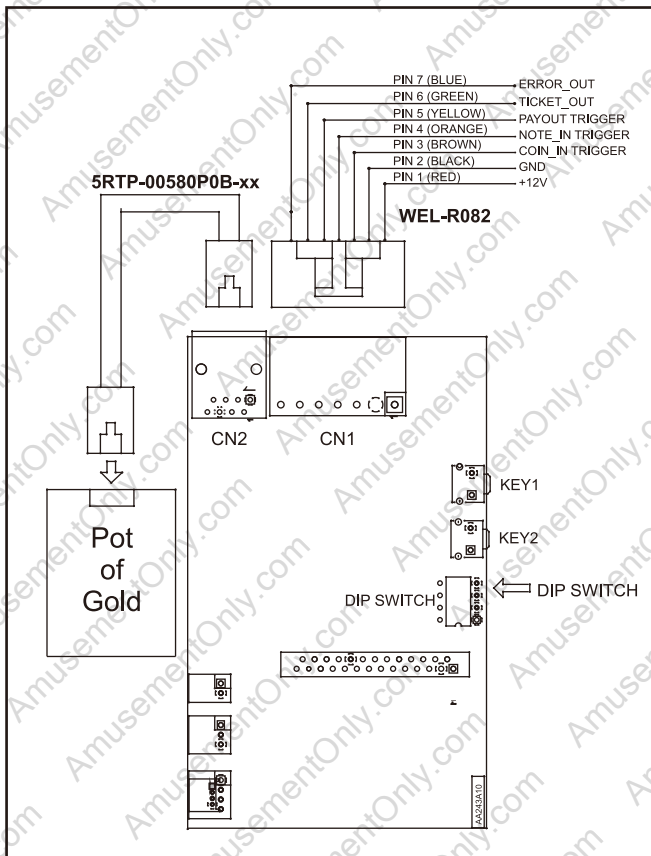
Step 2. Install paper roll into paper roll container on machine, paper roll is required to be setup according to the same direction of raster. (Please refer to Chapter 6.)

Step 3. Connect 5RTP-00580P0B-xx to VMC and CN2 on machine.  
(Page 12, 4-3 FIG.03)

Step 4. Turn power on and install paper roll properly, the machine will automatically detect the paper (Approx. 2 seconds) and roll the paper into the printing module.  
If the installation of the paper roll is correct, the machine is ready for printing.  
Working light on the machine's bezel will be on.  
(Page 17, 4-4 FIG.02)

Step 5. JP2 is for battery setting.  
Switch between enable and disable for battery setting.  
\*Default setting is Enable. (Page 18, 4-4 FIG.03)



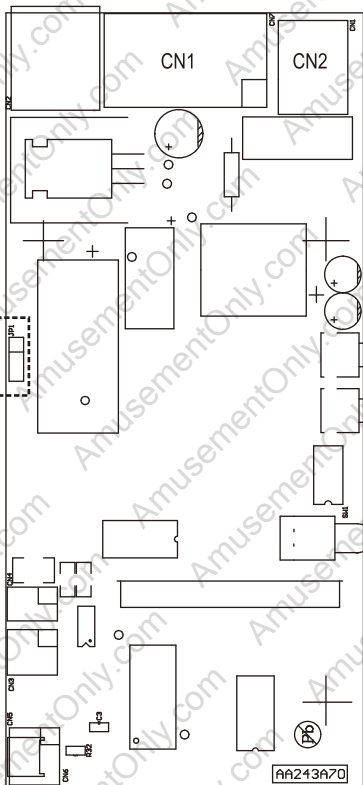
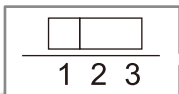


**JP2**

Battery Charge

1,2 PIN Short j Enable

2,3 PIN Short j Disable



## 5. Software Setup

### 5-1. Coupon & Receipt Setup

The GP-58CR can print two different types of tickets, each for a different purpose:

A coupon indicates the payout points for the player.

A receipt is provided to the player when s/he inserts coins or bills into the C/A or B/A.

The format of the coupon and receipt can be designed and changed by yourself and then upload it into machine by using GP-58CR Tools utility.



5-1 FIG.01

## 5-2. Tools

Please visit ICT web site <http://www.ictgroup.com.tw> to download the Driver & Tool.

### DOWNLOAD AREA

Download Area >

Client Area >

Contact Support >

Technical Enquiry >

#### Select Search

Please select a product to check the available files, choosing among operating manuals and product sheets, firmware and software, datasets and drivers.

If you don't find what you are looking for, please contact us using the Request Form.

GP-58CR

User's Tool

English

All

SUBMIT

5-2 FIG.01

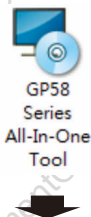
### Printer Driver.

Printer Driver included VCP driver and Windows driver.

Before Setup Printer Driver, Please select appropriate Windows OS.

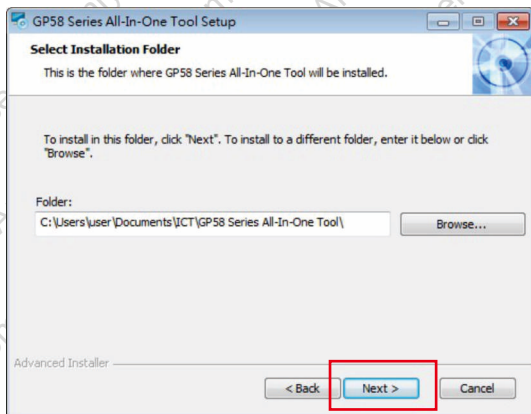
Printer support: Windows 7, Windows 8, Windows 8.1, Windows 10.

Step 1. To install GP-58 Series Tools, please follow the operation as below.

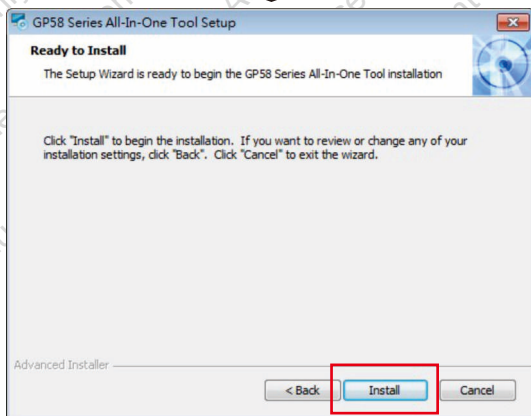


5-2 FIG.02

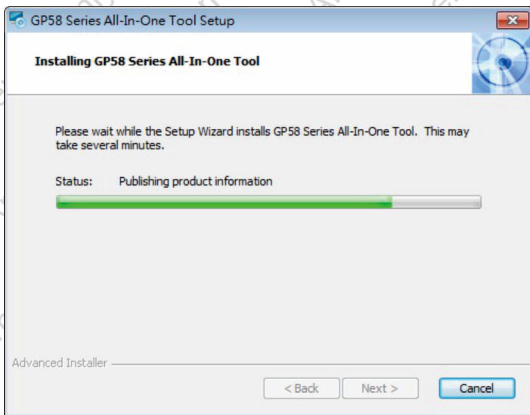




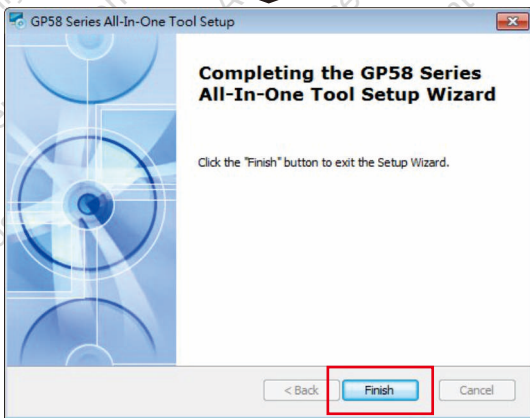
5-2 FIG.03



5-2 FIG.04



5-2 FIG.05



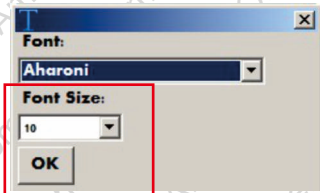
5-2 FIG.06

Step 2. Double click icon GP58 Series All-In-One-Tool.



5-2 FIG.07

Step 3. Select Characid font and font size then click OK.



5-2 FIG.08

Step 4. Chose GP58CR then click "V"



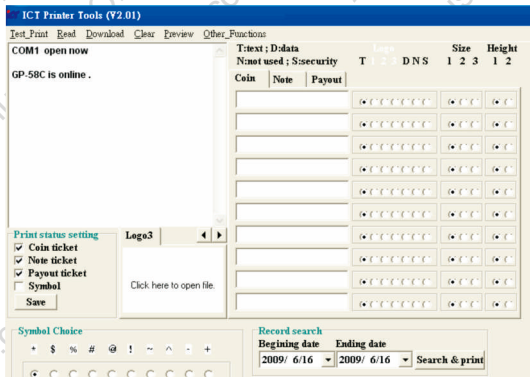
5-2 FIG.09

Step 5. Click Ticket Editor to edit your ticket



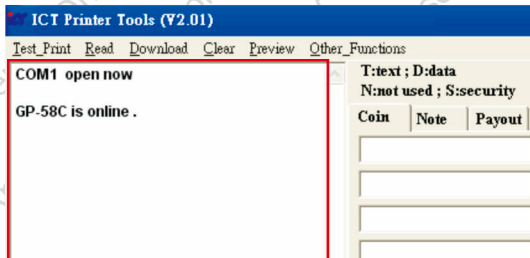
5-2 FIG.10

- ◆ The screen will be displayed as below.



5-2 FIG.11

- ◆ This is the Message Display Window.



5-2 FIG.12

- ◆ Cancel: Cancel the download from PC to GP-58 CR.  
(Must reset GP-58 CR afterward)

Data Multiplier & Decimal setting				
Coin	Note	Payout	D	
1	1	1	0	Save

0%

Cancel

5-2 FIG.13



- ◆ Select the working functions of GP-58 CR.

**e.g.** 1. If you only select "Print coin ticket", It will not print out any ticket except the coin ticket.

2. If you select the "symbol" option, there will be 2 symbols on both sides of the data number.

3. Click "save" button to save print status to GP-58 CR.

**Print status setting**

Coin ticket

Note ticket

Payout ticket

Symbol

Save

**Symbol Choice**

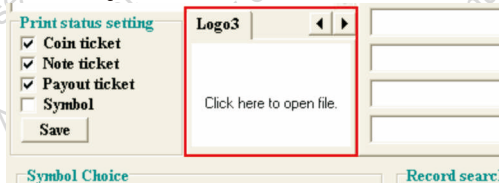
+ \$ % # @

• ○ ○ ○ ○

5-2 FIG.14

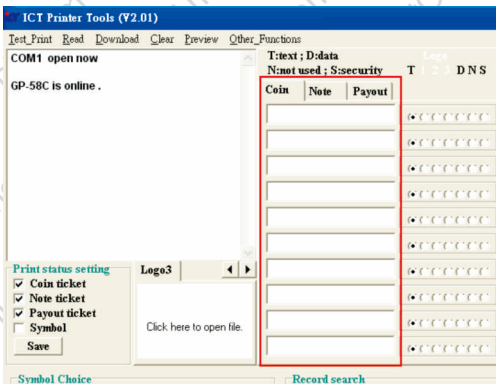


- ◆ To choose the logo you want to use (Logo1, Logo2 or Logo3), click on "**Click here to open file**". A sub-window of the file selection is going to be displayed. You can choose a bitmap file as the logo.



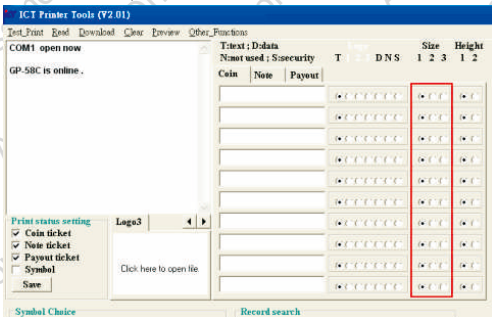
5-2 FIG.17

- ◆ Input the text from line 1 to line 10 to display on tickets.



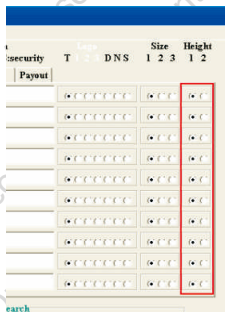
5-2 FIG.18

- ◆ There are three word sizes:  
size 1: "8x13" pixels, size 2: "14x24" pixels, and  
size 3: "22x36" pixels.



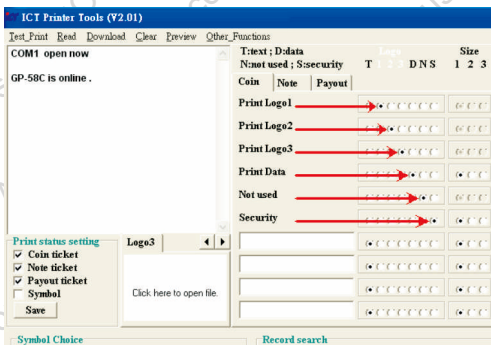
5-2 FIG.19

- ◆ The setting is for the heights of the words.  
In GP-58 CR system, "Height 1"  
is default.



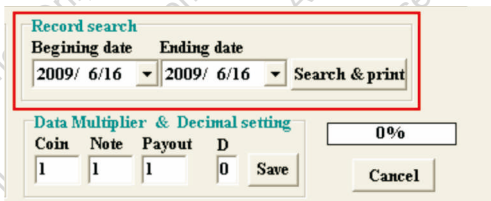
5-2 FIG.20

- ◆ Arrange contents detail for every line.



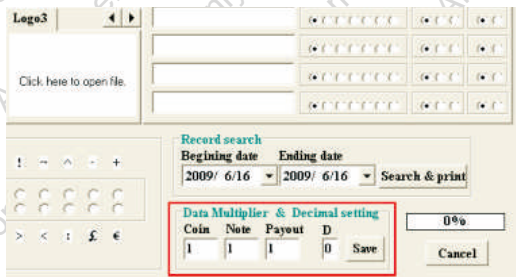
5-2 FIG.21

- ◆ Set the printer to print out the record of a certain period.



5-2 FIG.22

- ◆ Coin: Setup the multiplier of each pulse from C/A.  
Note: Setup the multiplier of each pulse from B/A.  
Payout: Setup the multiplier of each pulse of Payout signal.  
D: Setup a decimal point (it can't exceed three digits).



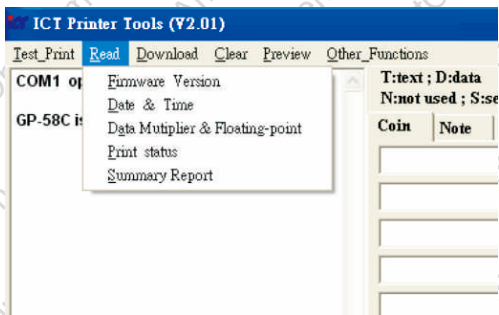
5-2 FIG.23

- ◆ Coin Ticket: Print a Coin coupon.
- ◆ Note Ticket : Print a Note coupon.
- ◆ Payout Ticket: Print a Payout coupon.
- ◆ Daily Report: Print a daily report.



5-2 FIG.24

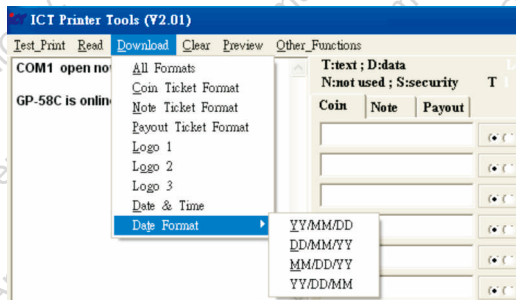
- ◆ Firmware Version :  
Read and display the current firmware version of the printer.
- Date & Time :  
Read and display the current date and Time of the printer.
- Data Multiplier & Floating-pointing :  
Read and display the current rate of each pulse.
- Print Status :  
Read and display the "print status setting".
- Summary Report :  
Read and display the current total records.



5-2 FIG.25



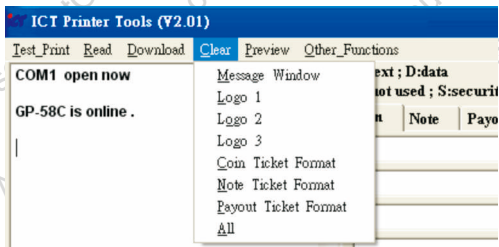
- ◆ All Formats : Download current designed ticket format to printer.
- Coin Ticket Format : Download coin ticket format to printer.
- Note Ticket Format : Download note ticket format to printer.
- Payout Ticket Format : Download payout ticket format to printer.
- Logo 1 : Download Logo 1 to printer.
- Logo 2 : Download Logo 2 to printer.
- Logo 3 : Download Logo 3 to printer.
- Date & Time : Download date and time in computer's system to printer.
- Date Format : (1) YY/MM/DD: Year / Month / Day
- (2) DD/MM/YY: Day / Month / Year
- (3) MM/DD/YY: Month / Day / Year
- (4) YY/DD/MM: Year / Day / Month



5-2 FIG.26



- ◆ Clear : Choose one of the options on the list to clear.

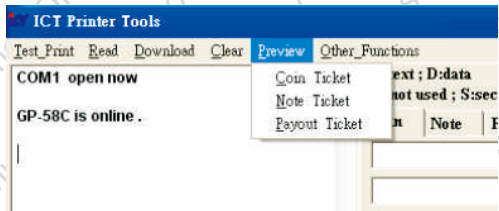


5-2 FIG.27



- ◆ Preview: Preview contents of coin ticket, note ticket or payout ticket.

*\*Note: The symbols will not be shown at front/back of the ticket in preview mode.*



5-2 FIG.28



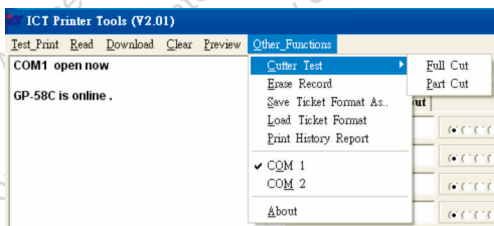
- ◆ Cutter Test : (1) Full cut (2) Part Cut.

Erase Record : Erase the summary record from printer.

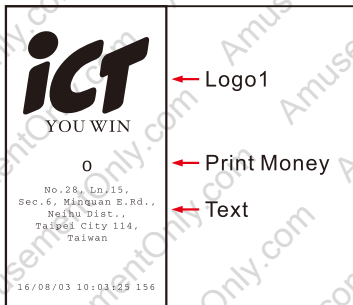
Save Ticket Format : Save designed ticket.

Load Ticket Format : Load designed ticket format.

Print History Report : Print all daily history reports.

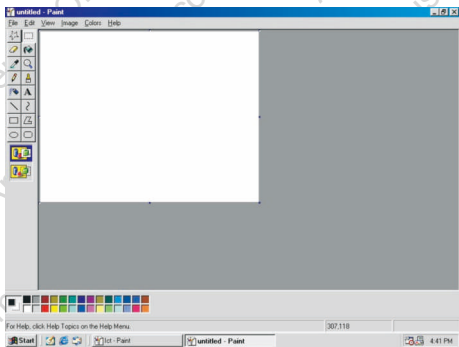


5-2 FIG.29



5-2 FIG.30

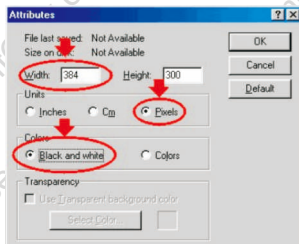
Step 6. Start program "Paint".



5-2 FIG.31

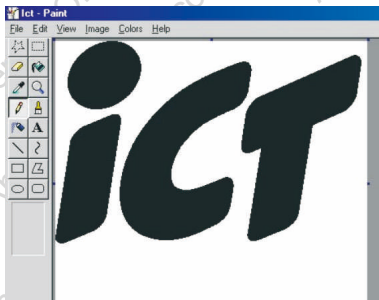
Step 7. The value of width is fixed at 384 pixels and can not be changed. However, the figure's height is not fixed, it can be changed by users.

**Note:** The size of the graphic file can not be over 16K bytes.



5-2 FIG.32

Step 8. Draw "ICT" image.



5-2 FIG.33



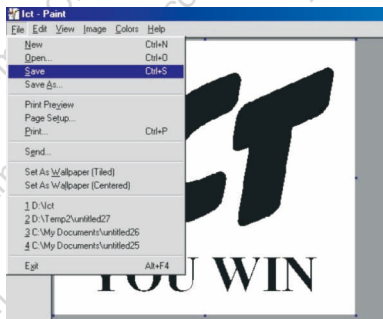
Step 9. Key in "YOU WIN".



5-2 FIG.34



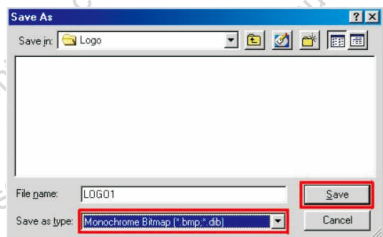
Step 10. Save file.



5-2 FIG.35



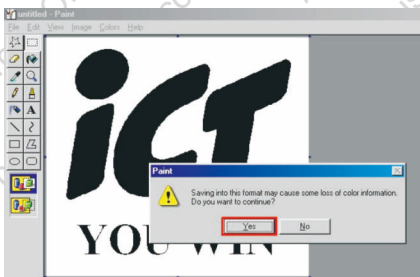
Step 11. Save as type " Monochrome Bitmap (\*.bmp, \*.dib)".



5-2 FIG.36



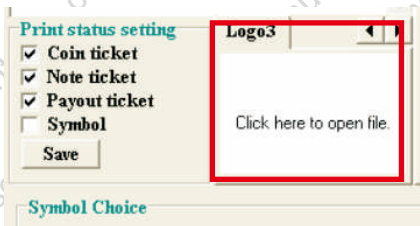
Step 12. Click “Yes”.



5-2 FIG.37



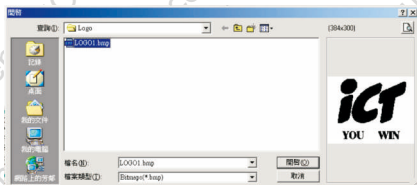
Step 13. Click on “click here to open file”.



5-2 FIG.38



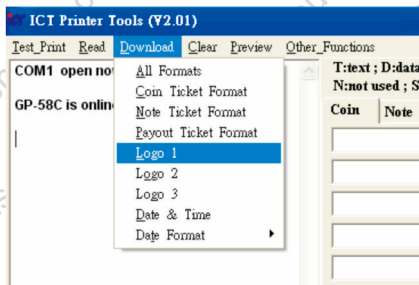
Step 14. Open logo file.



5-2 FIG.39



Step 15. Save logo 1 to GP-58CR.



5-2 FIG.40



Step 16. Key in words and adjust word size/ height.

<b>Print Data</b>	<input type="text"/>	<input type="text"/>	<input type="text"/>
<input type="text"/>	<input type="text"/>	<input type="text"/>	<input type="text"/>
<input type="text"/>	<input type="text"/>	<input type="text"/>	<input type="text"/>
<b>CHI YANG BUILDING,</b>	<input type="text"/>	<input type="text"/>	<input type="text"/>
<b>NO. 24, ALLEY 38, LANI</b>	<input type="text"/>	<input type="text"/>	<input type="text"/>
<b>91, NEI HU ROAD, SEC.</b>	<input type="text"/>	<input type="text"/>	<input type="text"/>
<b>TAIWAN, R.O.C.</b>	<input type="text"/>	<input type="text"/>	<input type="text"/>
<input type="text"/>	<input type="text"/>	<input type="text"/>	<input type="text"/>

5-2 FIG.41



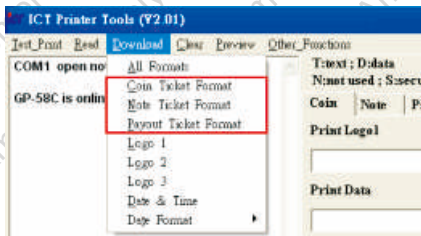
Step 17. Choose logo file to adjust height.

T:text ; D:data	Logo	Size	Height
N:not used ; S:security	T 1 2 3 DNS	1 2 3	1 2
Coin	Note	Payout	
<b>Print Logo1</b>	<input type="text"/>	<input type="text"/>	<input type="text"/>
<input type="text"/>	<input type="text"/>	<input type="text"/>	<input type="text"/>
<b>Print Data</b>	<input type="text"/>	<input type="text"/>	<input type="text"/>

5-2 FIG.42



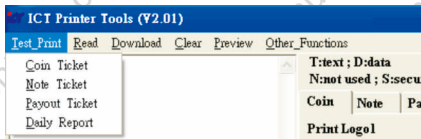
Step 18. Download word and logo format from “Coin Ticket Format”, “Note Ticket Format” or “Payout Ticket Format”.



5-2 FIG.43



Step 19. Printing trial.



5-2 FIG.44



# ict

YOU WIN

0

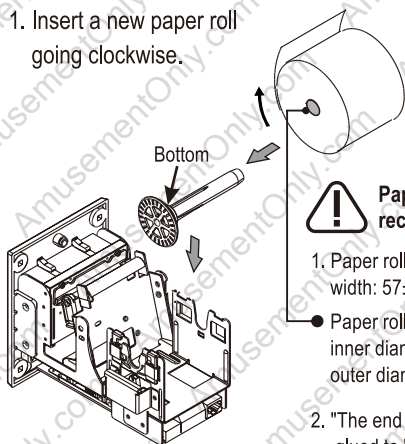
No.28, Ln.15,  
Sec.6, Minguan E.Rd.,  
Neihu Dist.,  
Taipei City 114,  
Taiwan

16/08/03 10:03:25 156

5-2 FIG.45

## 6. How to replace a new paper roll?

1. Insert a new paper roll going clockwise.



6 FIG.01



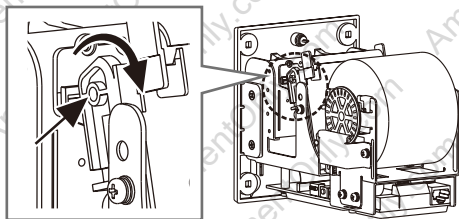
### Paper Roll Purchase recommendation

1. Paper roll size  
width:  $57 \pm 1$ mm, diameter:  $80 \pm 2$ mm
- Paper roll core  
inner diameter:  $13 \pm 0,5$ mm,  
outer diameter:  $20.4 \pm 1$ mm
2. "The end of the paper" needs to be glued to "the paper roll core".



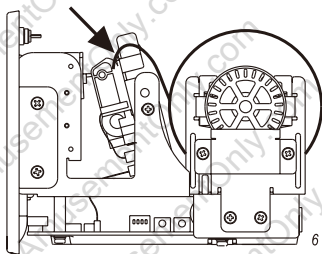
Please push paper roll to the bottom while installing.

2. Push the printer lever clockwise.



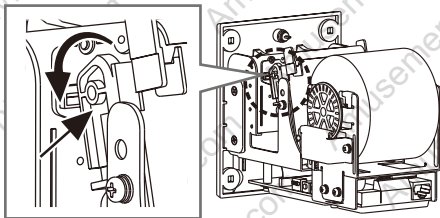
6 FIG.02

3. When Detector Sensor automatically detect paper, installation completes.




6 FIG.03

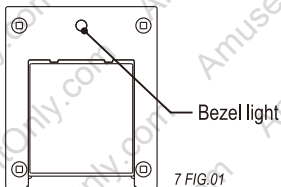
4. Push the printer lever back counterclockwise.



6 FIG.04

<i>Maintenance Notice</i>	
	<b>Recommended</b> Mild, non-abrasive, soap water.
<b>DO NOT USE</b>	<b>Organic solvent , Alcohol, Volatile liquid.</b>

## 7. Troubleshooting



7 TABLE 01

LED Flashes		Status	Corrective Actives
Red	Green		
	1	Low Paper	<ol style="list-style-type: none"> <li>1. Replace new roll of paper</li> <li>2. Print test</li> </ol>
1		NPO Error	<ol style="list-style-type: none"> <li>1. Check NPO sensor has paper or not. if yes, put paper on NPO. if not, replace new print head</li> <li>2. Print test</li> </ol>
1		Cutter Error	<ol style="list-style-type: none"> <li>1. Check the paper jam or not. if yes, clear the paper. if not, replace cutter.</li> <li>2. Print test</li> </ol>
1		No Paper	<ol style="list-style-type: none"> <li>1. Check the paper empty or not. if yes, replace the ner paper roll if not, replace gate sensor</li> <li>2. Print test</li> </ol>



**If the error can not be solved after corrective actions or it recurs, please contact ICT for technical support.**



**International Currency Technologies Corporation**

No.28, Ln. 15, Sec. 6, Minquan E. Rd., Neihu Dist., Taipei City 114, Taiwan  
sales@ictgroup.com.tw (For Sales) • fae@ictgroup.com.tw (For Customer Service)  
Website: [www.ictgroup.com.tw](http://www.ictgroup.com.tw)

