

Encore Series - HVRSS Refrigerated High-Capacity Self-Service Case



FOR GENERAL REFERENCE ONLY
 Models shown may not match the model features or manuf year of the item offered by AERE.

Models

- HV38RSS
- HV48RSS
- HV56RSS
- HV74RSS
- HV96RSS
- HV112RSS

- HV38RSSRD
- HV48RSSRD
- HV56RSSRD
- HV74RSSRD

- HVK48RSS
- HVK56RSS
- HVK74RSS
- HVK96RSS

Applications

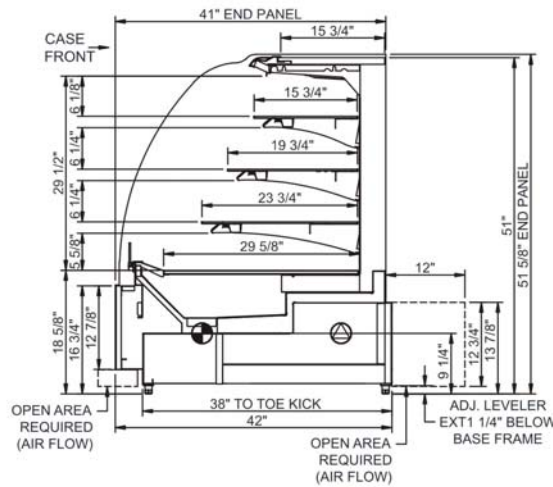
- Self-service merchandiser for packaged refrigerated bakery items.

Features	Standard	Options
EXTERIOR COLOR	<input type="checkbox"/> Powder coated (specify color)	<input type="checkbox"/> Laminated (confirm pattern/grain direction) <input type="checkbox"/> Stainless steel
EXTRUSION COLOR	<input type="checkbox"/> Black	<input type="checkbox"/> Silver
INTERIOR COLOR	<input type="checkbox"/> Black	<input type="checkbox"/> Stainless steel <input type="checkbox"/> White
END PANELS	<input type="checkbox"/> None (specify per line-up)	<input type="checkbox"/> Case to case glass end <input type="checkbox"/> Cutaway w/ glass <input type="checkbox"/> Full with mirror
FRONT PANEL	<input type="checkbox"/> Flat front panel	
REAR	<input type="checkbox"/> Solid back panel, white	<input type="checkbox"/> Clear glass rear sliding doors (3' to 6' models only) <input type="checkbox"/> Solid back panel, black <input type="checkbox"/> Solid back panel, stainless steel
SHELVING	<input type="checkbox"/> Clear glass shelves, lighted	<input type="checkbox"/> Smoked glass shelves, lighted
LIGHTS	<input type="checkbox"/> LED top & shelf lights	
ELECTRICAL ACCESS	<input type="checkbox"/> Rear electrical access	<input type="checkbox"/> Front electrical access
ELECTRICAL CONNECT	<input type="checkbox"/> Leads	<input type="checkbox"/> 6' straight blade power cord (self-cont.)
REFRIGERATION	<input type="checkbox"/> Remote DX refrigeration	<input type="checkbox"/> Breeze™ w/EnergyWise s/c refrigeration
MISCELLANEOUS		<input type="checkbox"/> 1" bumper on front & ends <input type="checkbox"/> Angled deck (n/a w/display step/riser) <input type="checkbox"/> Price tag molding

Encore Series HVRSS Refrigerated High-Capacity Self-Service Case

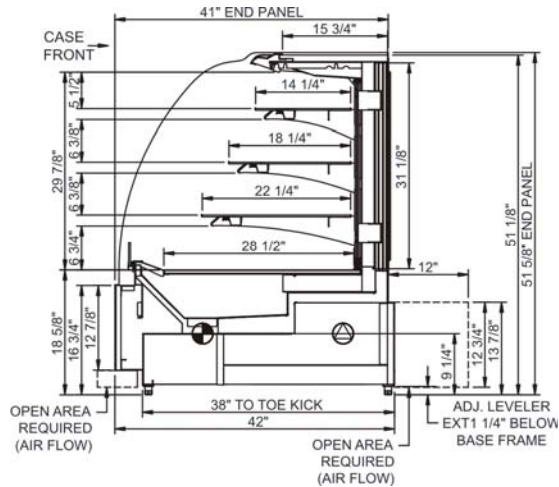
STANDARD

Model	L x D x H (Lengths do not include 1" end panels)
HV38RSS	38"L x 42"D x 51-5/8"H
HV48RSS	48"L x 42"D x 51-5/8"H
HV56RSS	56"L x 42"D x 51-5/8"H
HV74RSS	74"L x 42"D x 51-5/8"H
HV96RSS	96"L x 42"D x 51-5/8"H
HV112RSS	112"L x 42"D x 51-5/8"H



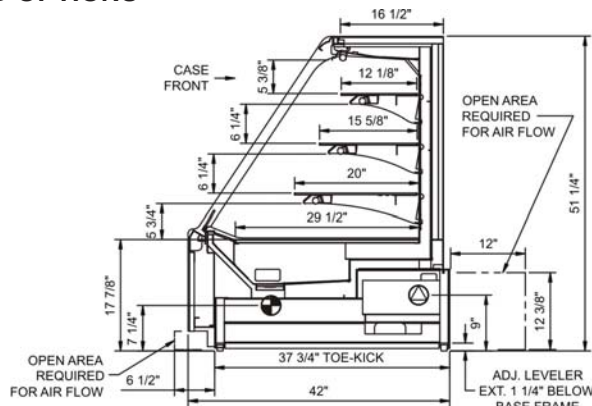
REAR DOOR OPTIONS

Model	L x D x H (Lengths do not include 1" end panels)
HV38RSSRD	38"L x 42"D x 51-5/8"H
HV48RSSRD	48"L x 42"D x 51-5/8"H
HV56RSSRD	56"L x 42"D x 51-5/8"H
HV74RSSRD	74"L x 42"D x 51-5/8"H



FLAT ANGLED OPTIONS

Model	L x D x H (Lengths do not include 1" end panels)
HVK48RSS	48"L x 42"D x 51-1/4"H
HVK56RSS	56"L x 42"D x 51-1/4"H
HVK74RSS	74"L x 42"D x 51-1/4"H
HVK96RSS	96"L x 42"D x 51-1/4"H



IMPORTANT NOTES:

- 1) 43" minimum door entry clearance required (without shipping skid).
- 2) Units are supplied with levelers which must be adjusted during installation to ensure the unit is level and plumb.

WARNING:

This product can expose you to chemicals, including Urethane (Ethyl Carbamate), which are known to the state of California to cause cancer and birth defects or other reproductive harm. For more information go to www.P65Warnings.ca.gov.

INTENDED ENVIRONMENT

Designed to operate in ambient conditions of 75°F with 55% relative humidity.

WARMEST AVG PRODUCT TEMP

Zone	Temp (°F)
1	40

INTENDED USE OF DISPLAY AREAS

Zone	Intended Use
1	Packaged refrigerated products