

## Refrigerated Self-Service Case 24"D



MODEL SHOWN: B32

FOR GENERAL REFERENCE ONLY  
Models shown may not match the model features or manuf year of the item offered by AERE.

- ☐ B32
- ☐ B42
- ☐ B62
- ☐ B82

Lengths include end panels  
34-1/2"L x 24"D x 82-3/8"H  
45-1/2"L x 24"D x 82-3/8"H  
66-3/8"L x 24"D x 82-3/8"H  
88-3/8"L x 24"D x 82-3/8"H

### STANDARD FEATURES

- Breeze™ w/EnergyWise s/c refrigeration
- Blue Fin coated coil
- Compressor air lower front intake and upper front discharge.  
Front panel cannot be blocked
- Condensate pan (self-contained refig. only)
- Integrated average product temperature of 40°F or less
- LED 4000K top light(s)
- One piece formed ABS plastic tub (n/a B82)
- One year parts & labor; 5 year compressor warranty
- Removable deck pans provide complete access to evaporator coil & refrigeration connections
- Shelving removable and adjustable on 1" centers
- Solid back panel, black

Features	Standard	Options
EXTERIOR COLOR	<input type="checkbox"/> Laminated (non-premium) Confirm pattern/grain direction	<input type="checkbox"/> Laminated (premium) Confirm pattern/grain direction <input type="checkbox"/> Stainless steel (includes lower front panel)
INTERIOR COLOR	<input type="checkbox"/> Black	<input type="checkbox"/> Stainless steel
LWR PERFORATED FRNT PANEL	<input type="checkbox"/> Painted - Black	<input type="checkbox"/> Stainless steel (w/stainless ext. only)
BASE	<input type="checkbox"/> Casters w/ levelers (n/a w/ remote ref.)	<input type="checkbox"/> Levelers (only) <input type="checkbox"/> Seismic levelers (Q4695)
END PANEL LEFT	<input type="checkbox"/> Full end panel w/mirror interior (metal edge matches interior color)	<input type="checkbox"/> Cutaway end panel (vinyl edge matches interior color) <input type="checkbox"/> No end panel w/ synchronized defrost
END PANEL RIGHT	<input type="checkbox"/> Full end panel w/mirror interior (metal edge matches interior color)	<input type="checkbox"/> Cutaway end panel (vinyl edge matches interior color) <input type="checkbox"/> No end panel w/ synchronized defrost
HEADER STYLE	<input type="checkbox"/> Flat	<input type="checkbox"/> Curved header
UPPER FRONT PANEL	<input type="checkbox"/> Flat front panel	<input type="checkbox"/> Black slatwall (flat front only) <input type="checkbox"/> Curved front panel
SHELVING	<input type="checkbox"/> Metal shelves, non-lighted	<input type="checkbox"/> Metal shelves, lighted (LED 4000K)
ELECTRICAL CONNECT	<input type="checkbox"/> 6' power cord (base exit)	<input type="checkbox"/> 6' power cord (top exit)
REFRIGERATION	<input type="checkbox"/> Breeze™ w/EnergyWise s/c refrigeration	<input type="checkbox"/> Breeze™ w/ EnergyWise s/c refrigeration (w/ floor drain) <input type="checkbox"/> Note: Remote doesn't incl Conds unit. Floor drain reqd. <input type="checkbox"/> Remote w/thermostat, solenoid & TXV
MISCELLANEOUS		<input type="checkbox"/> Second year parts & labor warranty (excludes compressor)
ACCESSORIES		<input type="checkbox"/> Clean Sweep® coil cleaner (n/a w/remote) <input type="checkbox"/> Night curtain, retractable, non-locking <input type="checkbox"/> Price tag molding (matches interior color) <input type="checkbox"/> Solid security cover, removable, locking

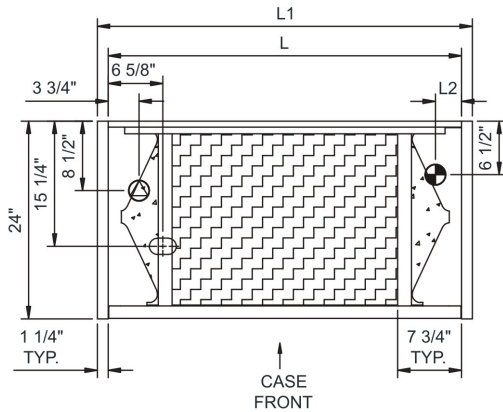
# Oasis®

## Product Specifications

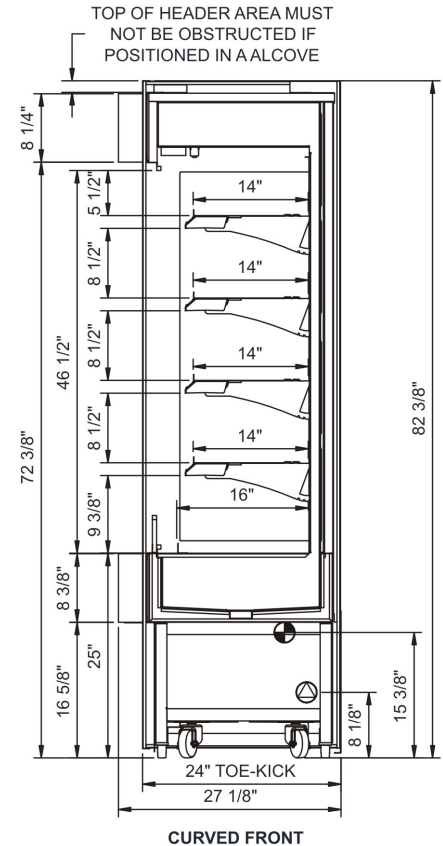
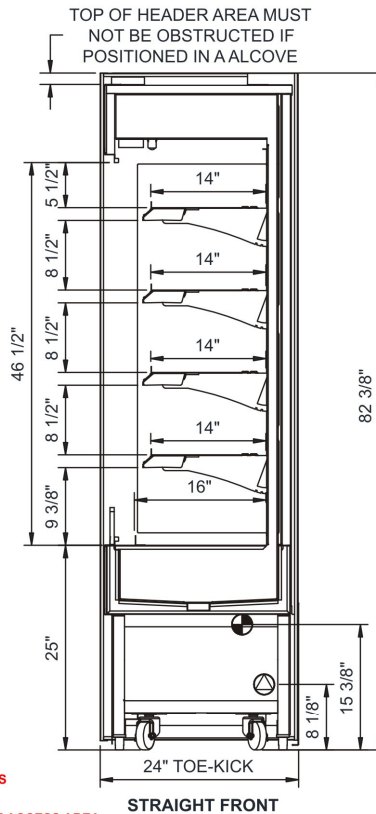
**Intended Environment:** Type I - Designed to operate in ambient conditions of 75°F with 55% relative humidity unless noted otherwise in system information below.

Zone	Intended Product To Be Displayed	Warmest Avg Prod Temp ° F
All	Packaged refrigerated products	40

PLAN VIEW



SIDE VIEW



**NOTE: ALL DIMENSIONS APPROXIMATE**

- ELECTRICAL JUNCTION BOX (SUPPLIED WITH 6" LEADS OR POWER CORD).
- LOCATION OF DRAIN TUBE FOR REMOTE REF. ONLY (SUPPLIED WITH 3/4" OR 1 1/2" PVC TUBE).
- REFRIGERATION LINE CONNECTION.
- REMOTE FLOOR SINK & UTILITIES ACCESS AREA.
- SELF-CONTAINED CASE SERVICE ACCESS AREA.
- DRY CASE SERVICE ACCESS AREA.

Model Technical Specifications															
Model	L"	L1"	L2"	System Circuit Volts			Phs	Freq	Amps ***	Watts	Wires	NEMA Plug	SST	BTUH	Est Wt
B32	N/A	34.50	3.13	Remote(Type I)	Circuit #1	110-120	1	60	1.49	143	2+G	Leads Multiple	20.00	5900	800
				Self-Contained	Circuit #1	110-120	1	60	16.00	1,730	2+G	5-20P or L5-20P	N/A	N/A	
B42	N/A	45.50	3.13	Remote(Type I)	Circuit #1	110-120	1	60	2.13	197	2+G	Leads Multiple	20.00	6550	950
				Self-Contained	Circuit #1	110-120	1	60	15.49	1,523	2+G	5-20P or L5-20P	N/A	N/A	
B62	N/A	66.38	3.13	Remote(Type I)	Circuit #1	110-120	1	60	2.82	293	2+G	Leads Multiple	20.00	9500	1,250
				Self-Contained	Circuit #1	208-240	1	60	11.45	2,225	2+G	6-20P or L6-20P	N/A	N/A	
B82	N/A	88.38	3.13	Remote(Type I)	Circuit #1	110-120	1	60	3.67	371	2+G	Leads Multiple	20.00	12650	1,300
				Self-Contained	Circuit #1	120/230V	1	60	15.97	3,392	3+G	14-20P or L14-20P	N/A	N/A	

\*\*\* Does not include electric defrost on freezer models.

### Regulatory Approvals:

All Models  
 Accordance with AHRI Std 1200  
 ETL Listed to UL 471  
 ETL Listed to CAN/CSA 22.2 No. 120  
 UL Sanitation to NSF Std 7



In Accordance with  
**AHRI Std 1200**

**DOE 2017**  
 Energy Efficiency  
 Compliant

### Important Notes:

- 1) ELECTRICAL NOTE: If GFCI is required, a GFCI breaker MUST be used in lieu of a GFCI receptacle
- 2) Performance issues (product temperatures, water on floor, etc.) caused by adverse conditions are not covered by warranty.
- 3) Keep unit at least 15' from exterior doors, overhead HVAC vents, or any air curtain disruption.
- 4) End panels must be tightly joined or kept at least 6" away from any structure to prevent condensation.
- 5) Do not expose unit to direct sunlight or any heat source (ovens, fryers, etc.).
- 6) Tile floors, low ceilings, or small rooms will increase noise level.