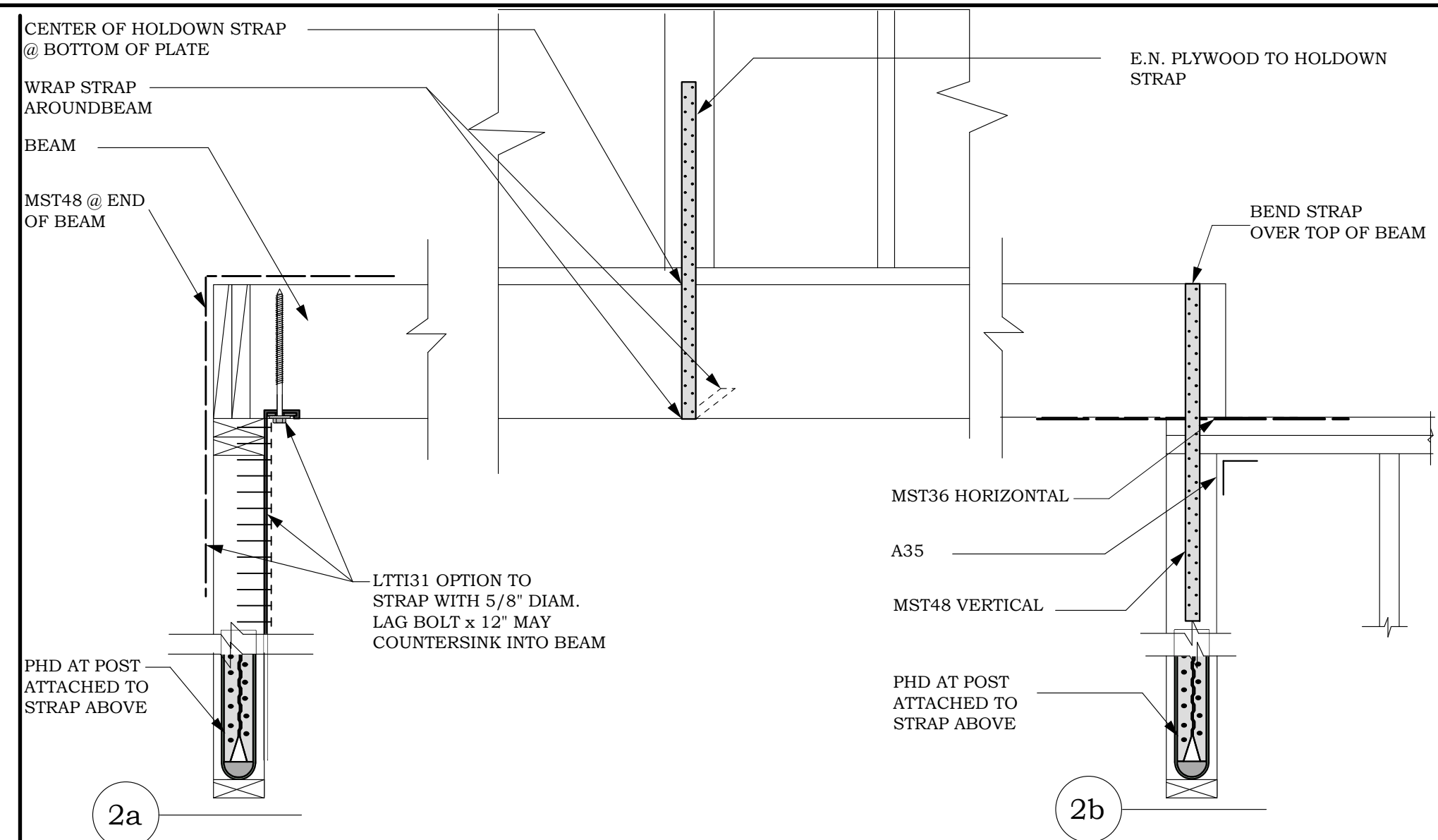
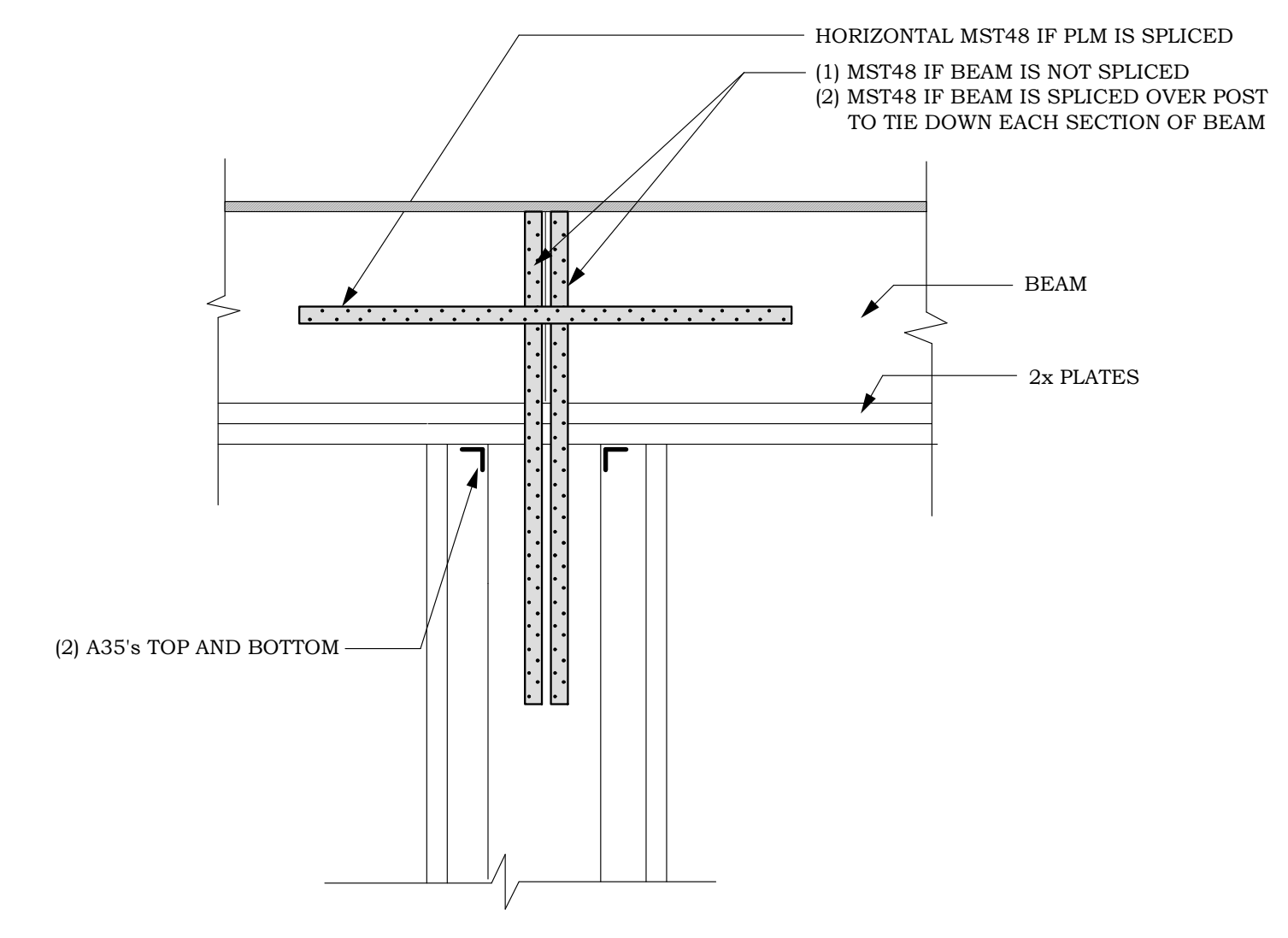


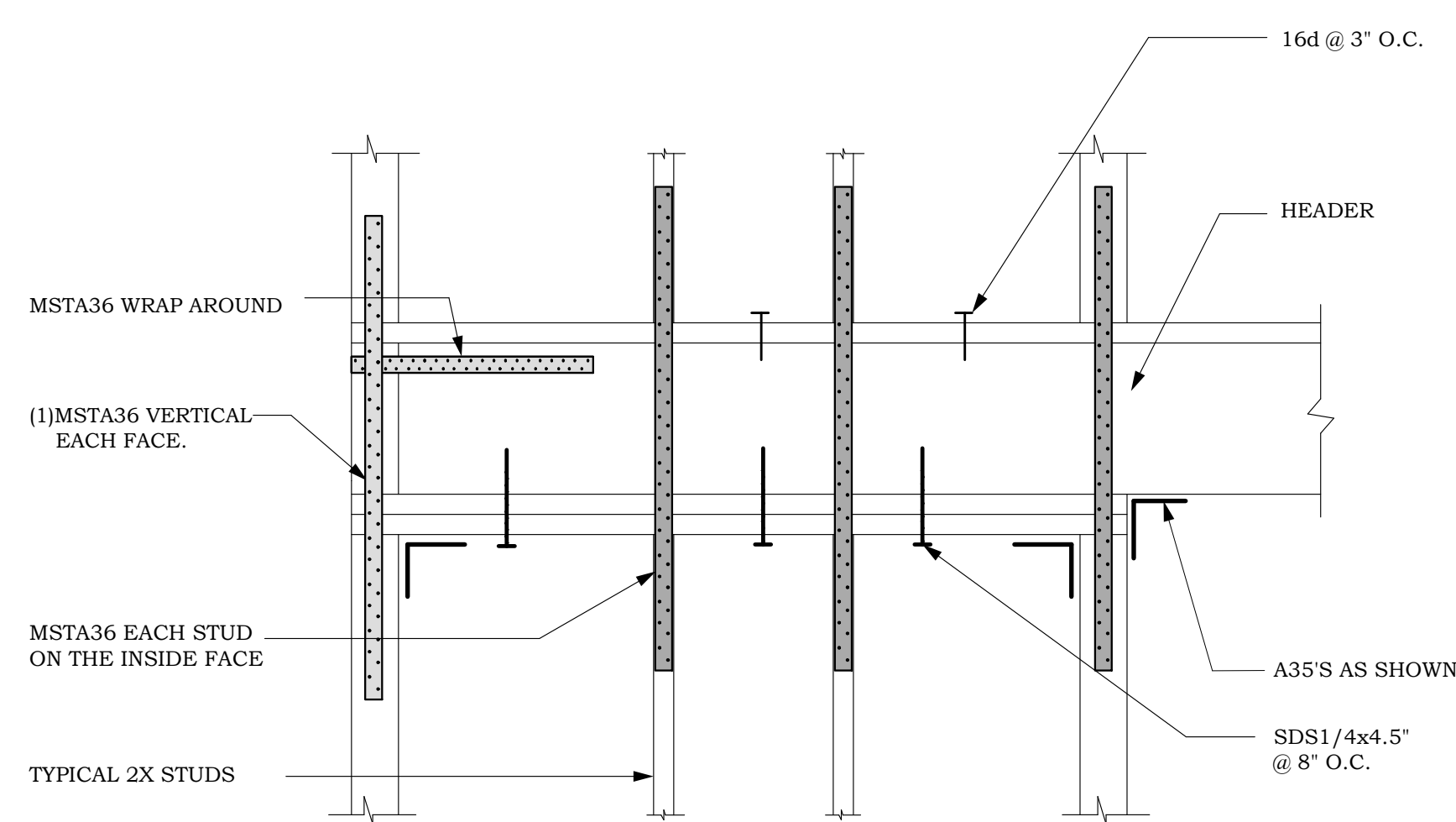
1 HEADER SUPPORTING HOLDOWNS STRAPS



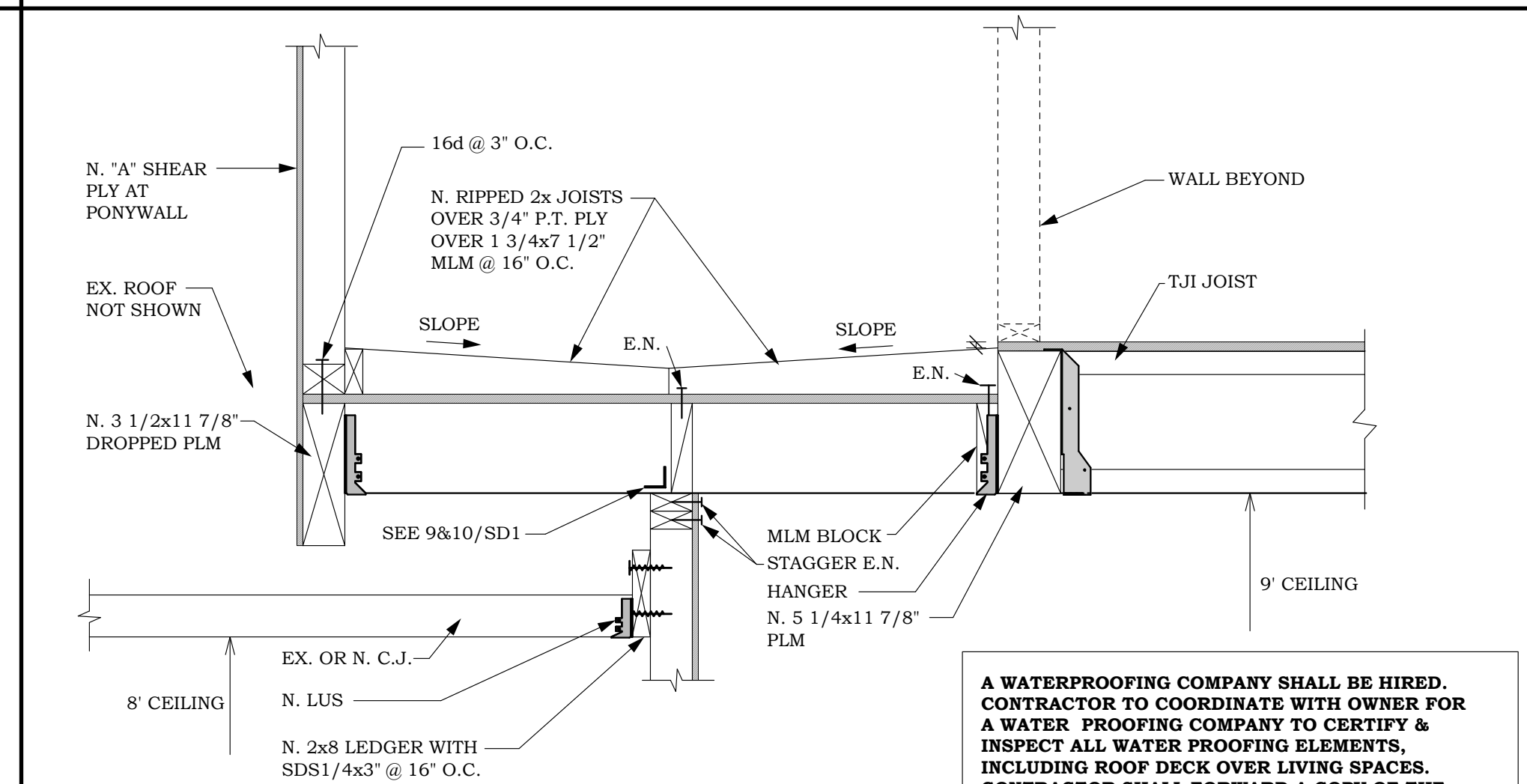
2 STRAP TO BEAM BELOW



3 BEAM TIE DOWN

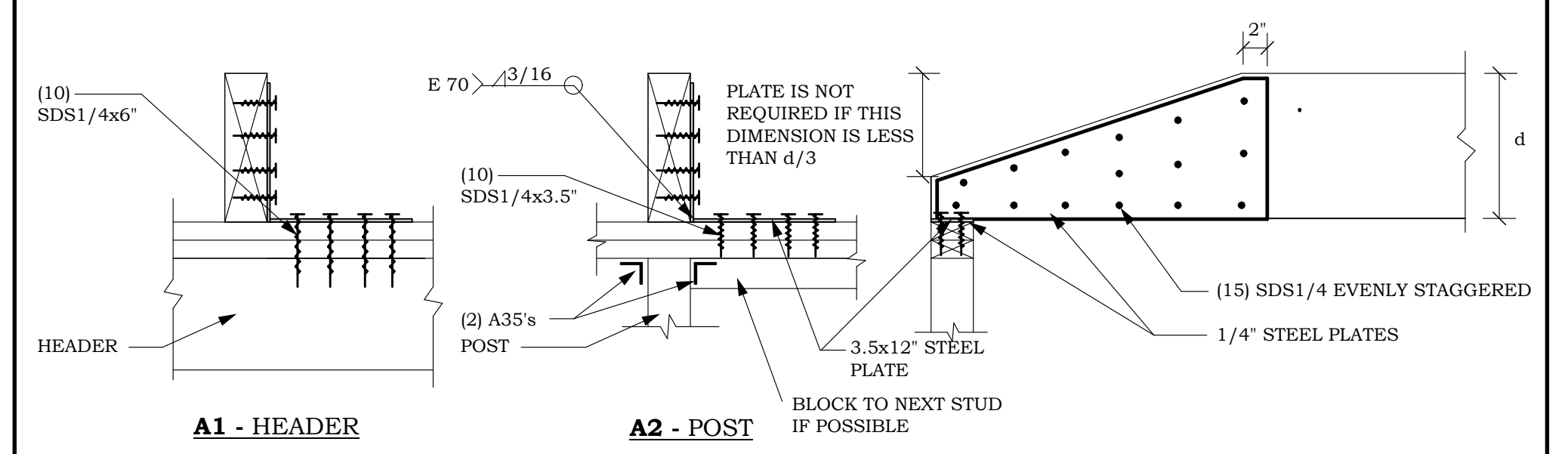


4 CONTINUOUS BEAM

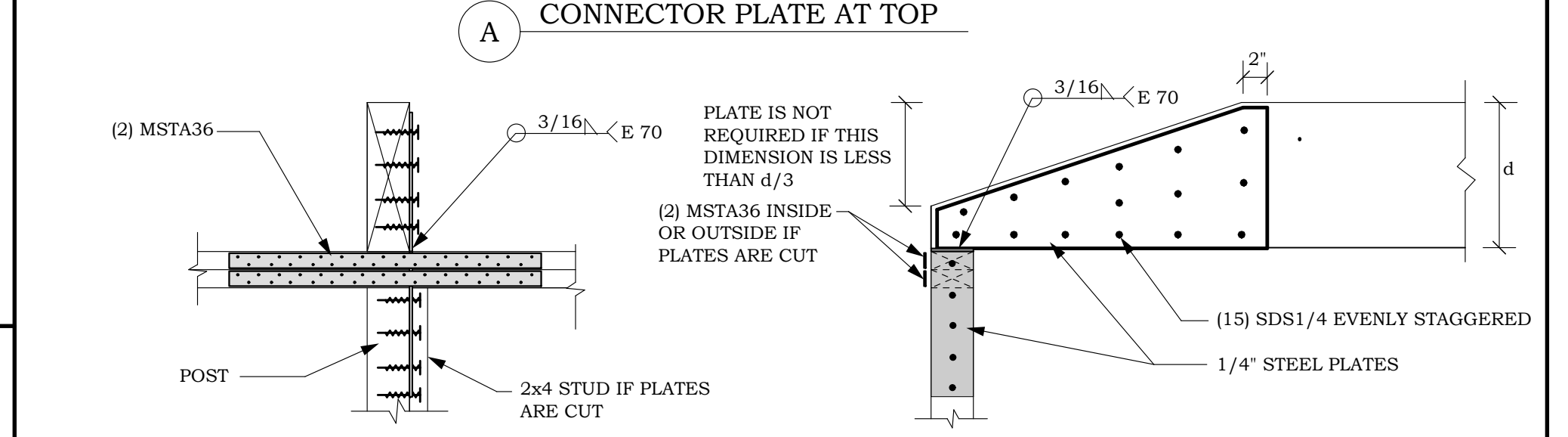


5 BALCONY DETAIL

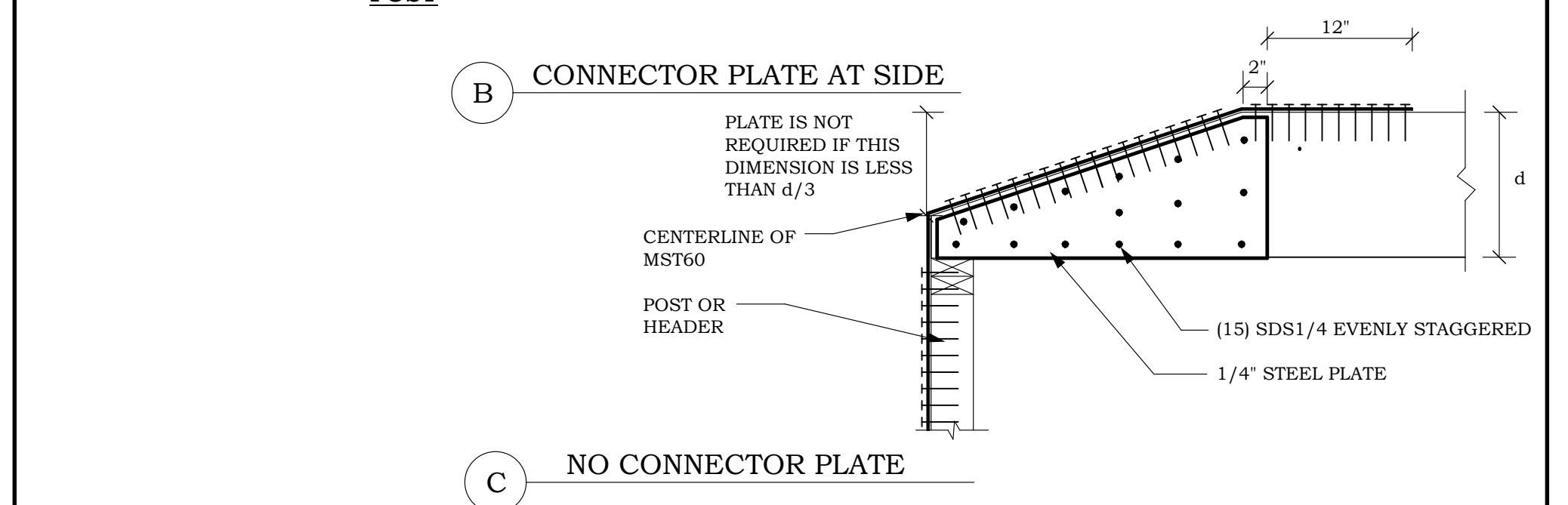
A WATERPROOFING COMPANY SHALL BE HIRED. CONTRACTOR TO COORDINATE WITH OWNER FOR A WATER PROOFING COMPANY TO CERTIFY & INSPECT ALL WATER PROOFING ELEMENTS, INCLUDING ROOF DECK OVER LIVING SPACES. CONTRACTOR SHALL FORWARD A COPY OF THE CERTIFICATE TO ARCHITECT AND ENGINEER. ENGINEER & ARCHITECT ARE NOT RESPONSIBLE FOR WATERPROOFING OF ANY OR ALL PARTS OF THE BUILDING. THE WATERPROOFING COMPANY MAY ALTER DETAILS AS FIT TO PROVIDE A WATERTIGHT BUILDING.



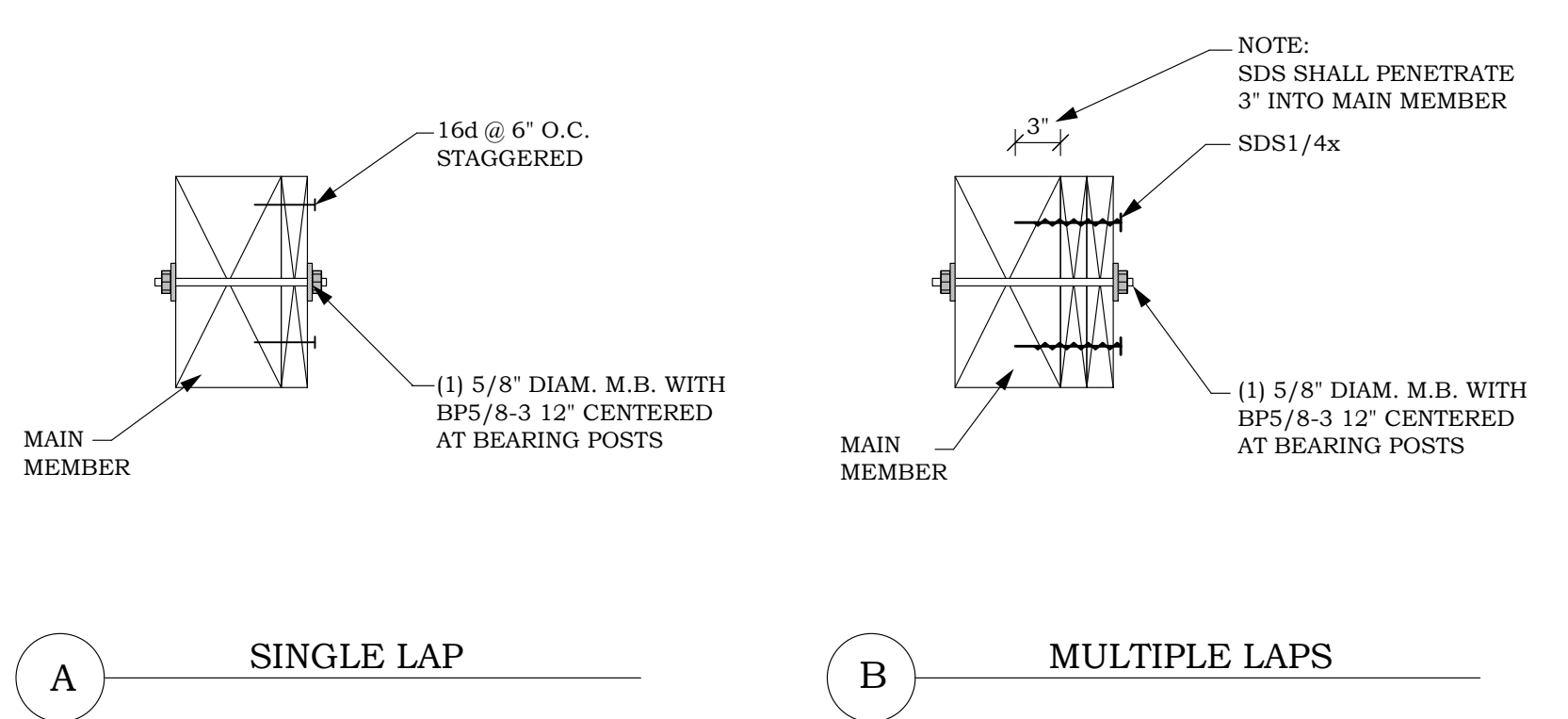
A1 - HEADER A2 - POST



B CONNECTOR PLATE AT SIDE

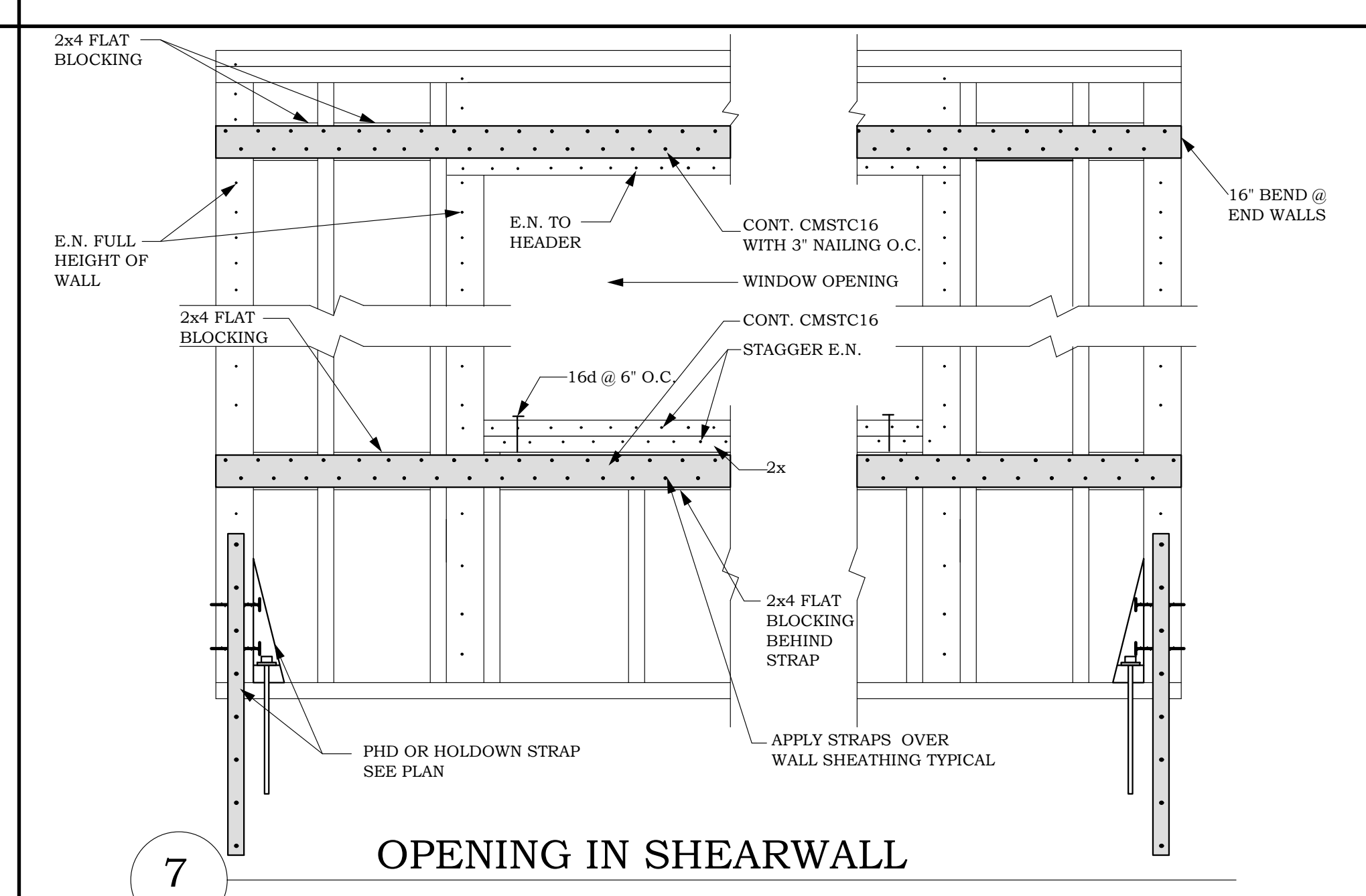


C NO CONNECTOR PLATE

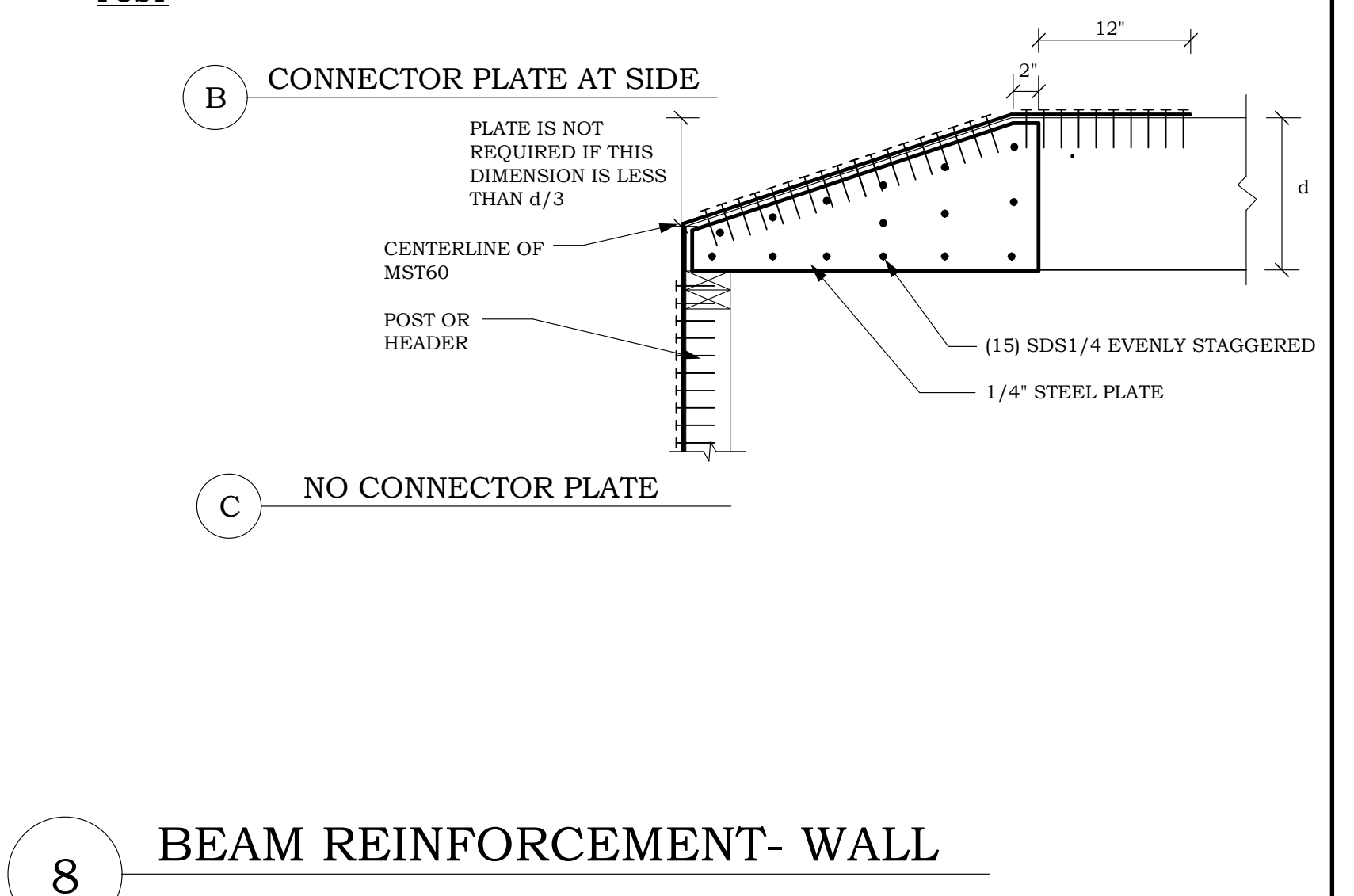


A SINGLE LAP B MULTIPLE LAPS

6 TYPICAL LAPPED BEAM



7 OPENING IN SHEARWALL



8 BEAM REINFORCEMENT- WALL